

# 647 BOYLSTON STREET

Boston, MA



Retail For Lease: 1,312 SF (Street) | 350 SF (Lower Level)

**WHAT'S  
NEXT**  
IN RETAIL



## PRIME BACK BAY LOCATION

Available Now:

- 1,312 SF (Street)
- 350 SF (Lower Level)

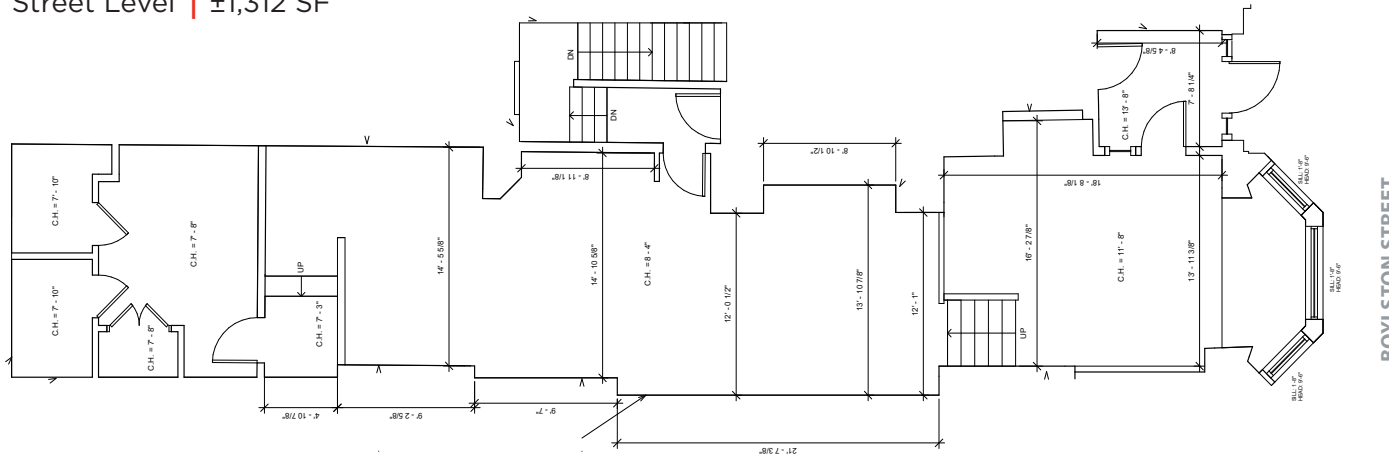
**For More Information Contact:**

Emily Ou  
Managing Director  
emily.ou@cushwake.com  
+1 617 204 4142

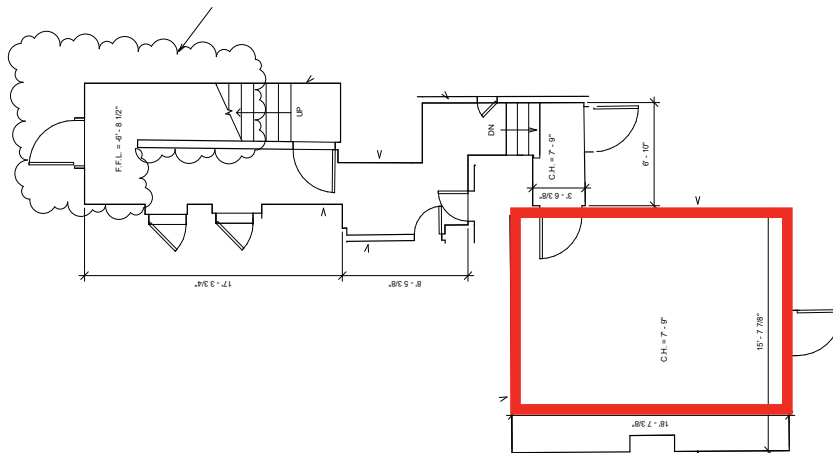
# 647 BOYLSTON STREET

Boston, MA

Street Level | ±1,312 SF



Lower Level | ±350 SF



EMILY OU / Managing Director / [emily.ou@cushwake.com](mailto:emily.ou@cushwake.com) / +1 617 204 4142

WE ARE  
THE CENTER  
OF RETAIL

[CUSHWAKERETAIL.COM](http://CUSHWAKERETAIL.COM)

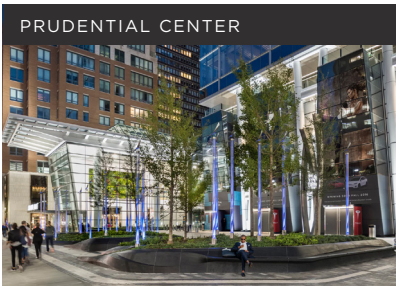
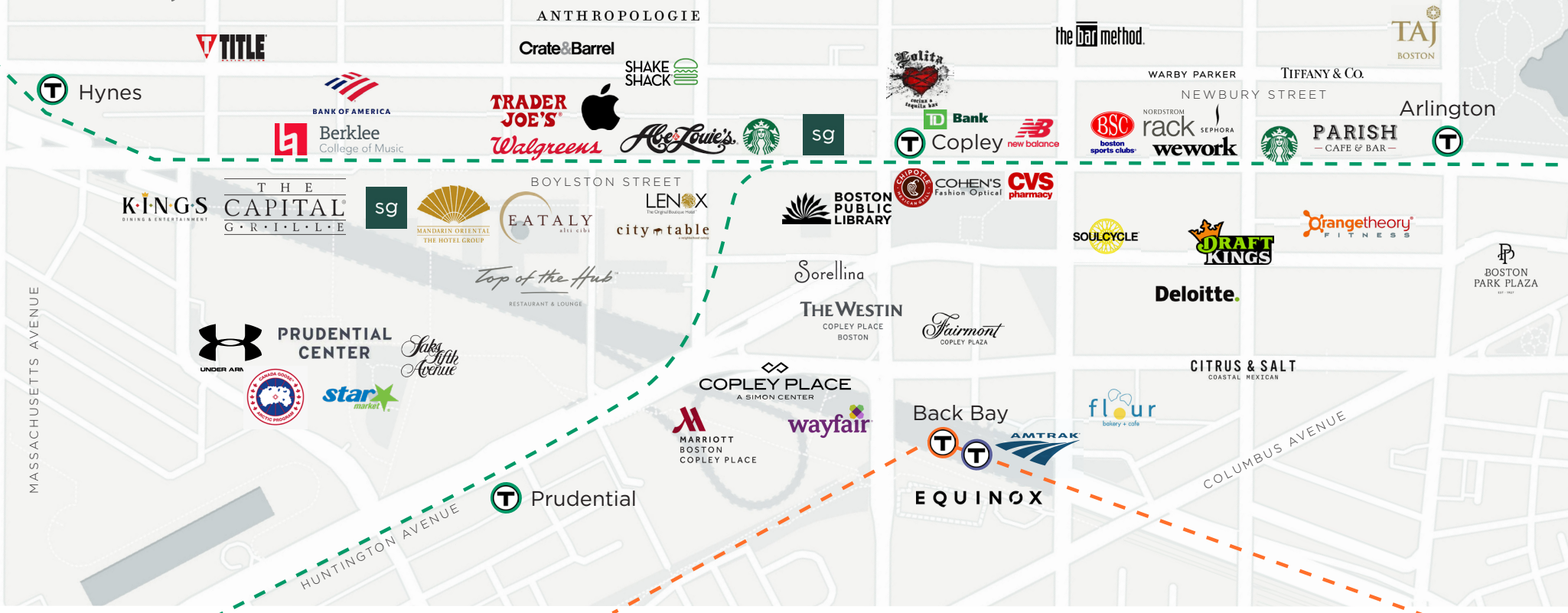
Cushman & Wakefield Copyright 2015. No warranty or representation, express or implied, is made to the accuracy or completeness of the information contained herein, and same is submitted subject to errors, omissions, change of price, rental or other conditions, withdrawal without notice, and to any special listing conditions imposed by the property owner(s). As applicable, we make no representation as to the condition of the property (or properties) in question.





# 647 BOYLSTON STREET

Boston, MA



PRUDENTIAL CENTER



HYNES CONVENTION CENTER



COPLEY SQUARE



BOSTON PUBLIC GARDEN



CHARLES RIVER ESPLANADE

EMILY OU / Managing Director / emily.ou@cushwake.com / +1 617 204 4142

WE ARE  
THE CENTER  
OF RETAIL

CUSHWAKERETAIL.COM

Cushman & Wakefield Copyright 2015. No warranty or representation, express or implied, is made to the accuracy or completeness of the information contained herein, and same is submitted subject to errors, omissions, change of price, rental or other conditions, withdrawal without notice, and to any special listing conditions imposed by the property owner(s). As applicable, we make no representation as to the condition of the property (or properties) in question.

