

FOR LEASE



SITE

11615 Crosby Lynchburg Road

CROSBY, TX 77532

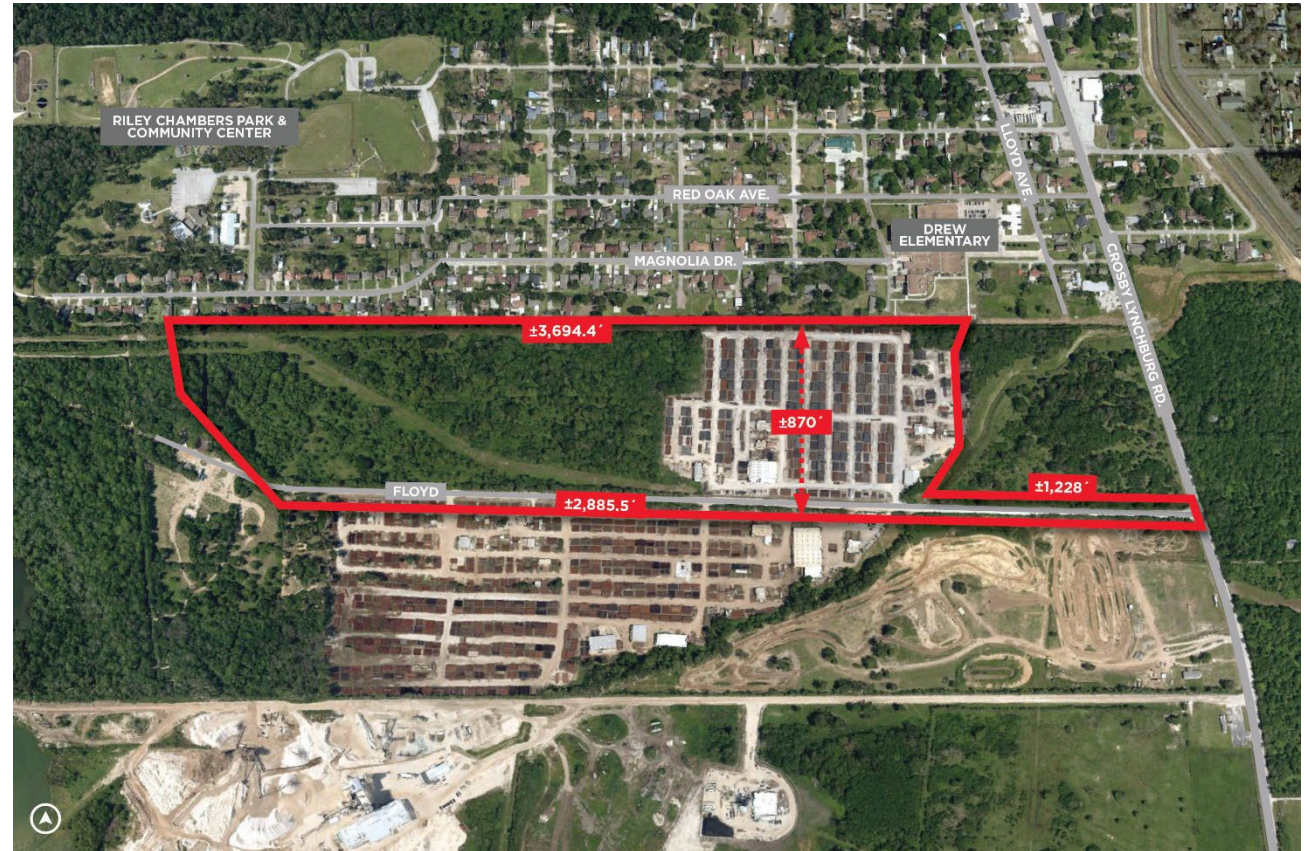
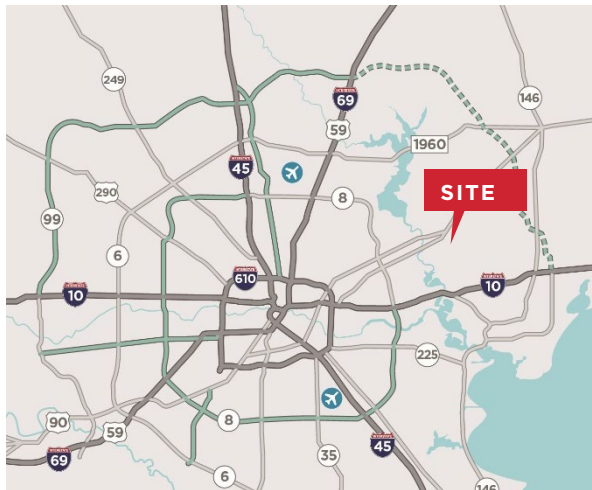
61.5 TOTAL AC WITH 24 AC OF STABILIZED YARD AVAILABLE FOR LEASE
DIVISIBLE



OVERVIEW

11615 Crosby Lynchburg Road

Location	11615 Crosby Lynchburg Road Crosby, TX 77532
Total Area	61.5 Acres (Divisible)
Improved Area	24 acres stabilized former pipe yard
Property Features	Located in Harris County Not in the Floodplain Crosby ISD
Rental Rate	Inquiry with Broker



FOR MORE INFORMATION, PLEASE CONTACT:

BEAU KALEEL
+1 713 963 2844
beau.kaleel@cushwake.com

MICHAEL FOREMAN
+1 713 963 2850
michael.foreman@cushwake.com