

±60.7025 AC

NEC OF N. MAIN ST. & WALLISVILLE RD.

BAYTOWN, TX 77521



KRISTEN MCDADE

Managing Director
T: +1 713 331 1796

kristen.mcdade@cushwake.com

MATTHEW DAVIS

Senior Director
T: +1 713 331 1798

matthew.davis@cushwake.com





18,970

2021 Total Population



5,951

2021 Total Households



3.19

2021 Average Household Size



104,364

2021 Average Household Income



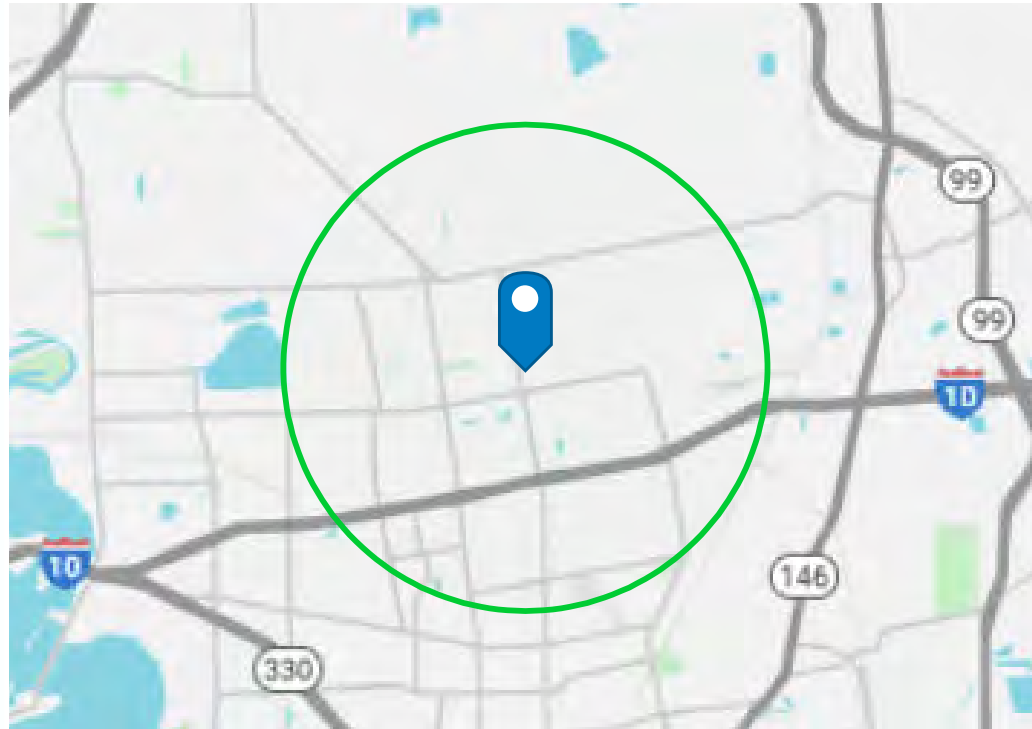
31.8

2021 Median Age

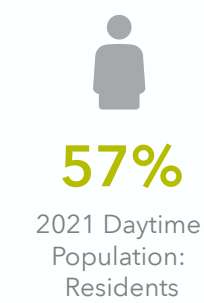
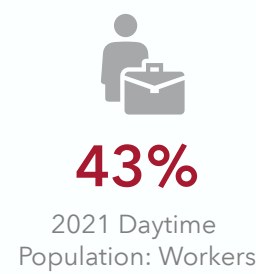
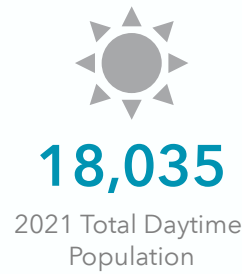


293,753

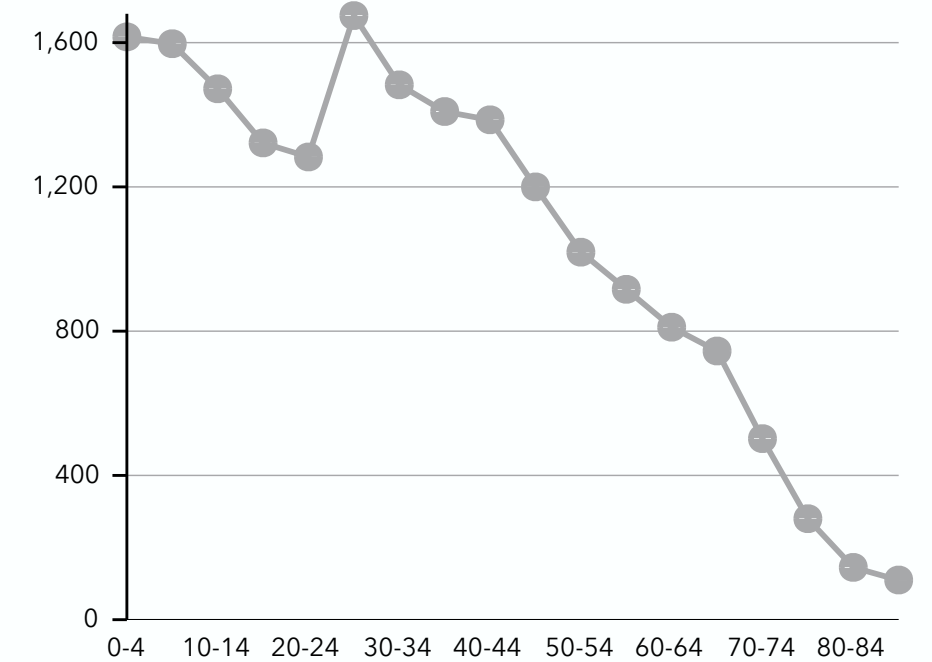
2021 Average Home Value



EMPLOYMENT



POPULATION BY AGE GROUP



EDUCATIONAL ATTAINMENT

24%

High School Diploma

5%

GED/Alternative Credential

26%

Some College/No Degree

11%

Associate's Degree

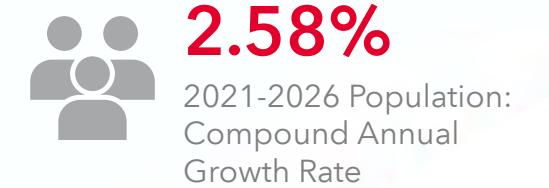
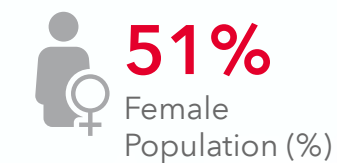
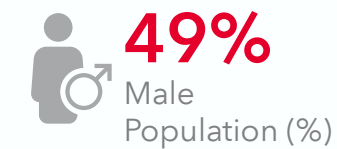
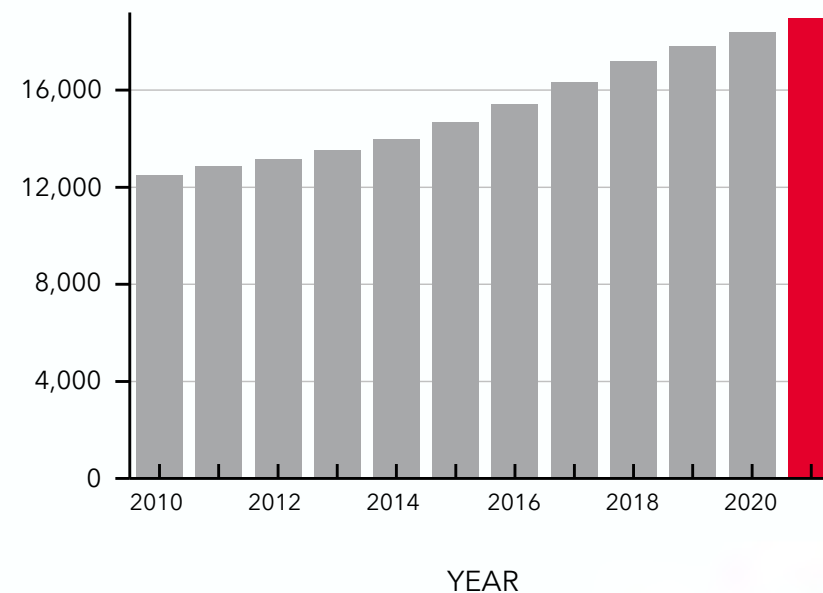
15%

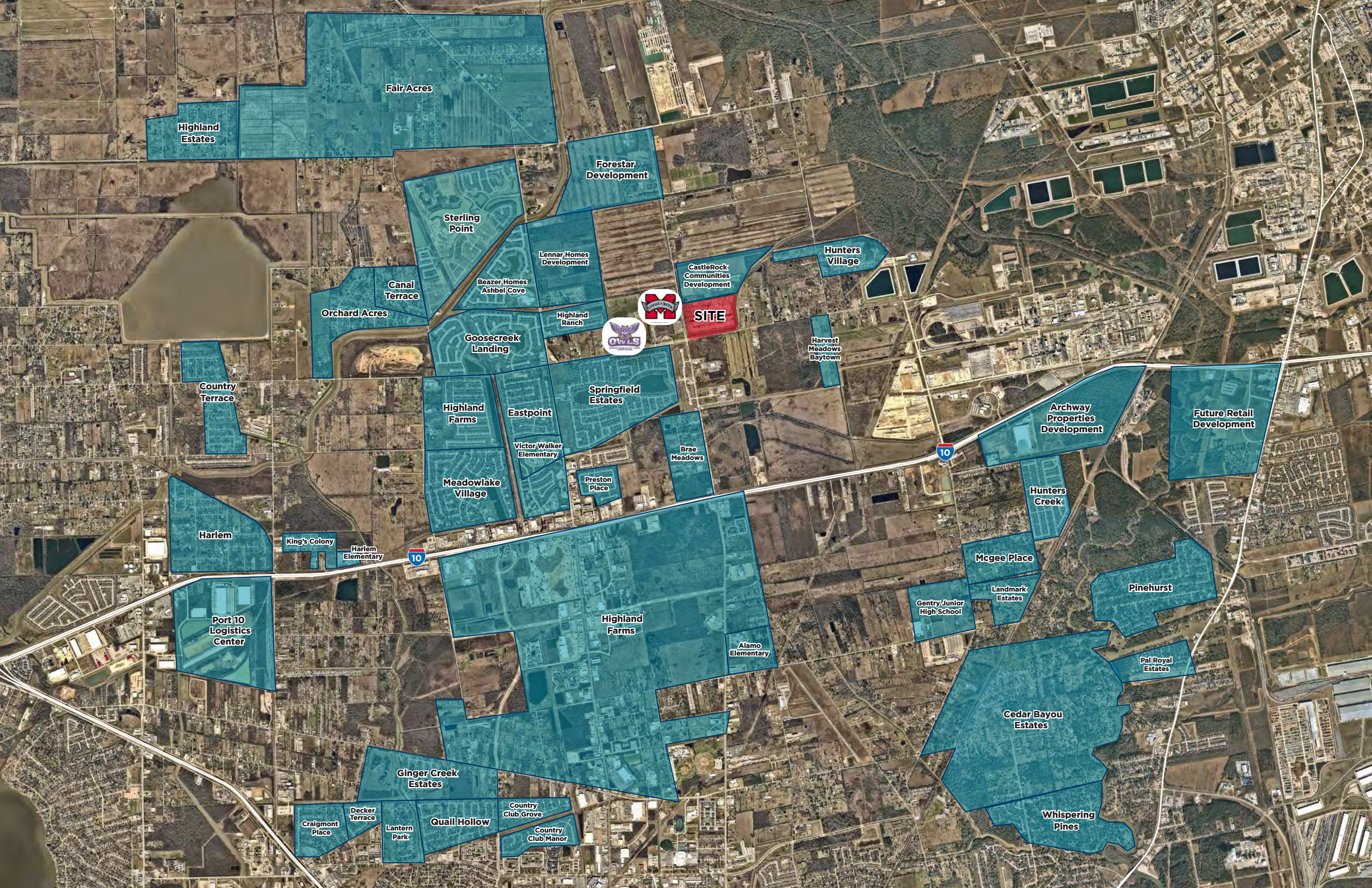
Bachelor's Degree

5%

Graduate/Professional Degree

POPULATION TIME SERIES 2010-2021





Highland Estates

Fair Acres

Forestar Development

Sterling Point

Lennar Homes Development

Hunters Village

CastleRock Communities Development

Beazer Homes Ashbel Cove

Orchard Acres

Highland Ranch

SITE

Goosecreek Landing

Springfield Estates

Harvest Meadows Baytown

Country Terrace

Highland Farms

Eastpoint

Archway Properties Development

Future Retail Development

Victor Walker Elementary

Brae Meadows

Harlem

Meadowlake Village

Preston Place

King's Colony

Harlem Elementary

Mcgee Place

Landmark Estates

Pinehurst

Port 10 Logistics Center

Highland Farms

Alamo Elementary

Gentry Junior High School

Pal Royal Estates

Cedar Bayou Estates

Ginger Creek Estates

Whispering Pines

Craigmont Place

Decker Terrace

Lantern Park

Quail Hollow

Country Club Grove

Country Club Manor





SIZE:

±60.7025 Acres

UTILITIES:

TBD, potential to be served by the City of Baytown.

DETENTION:

On-Site

ZONING:

None

CONTACT BROKERS FOR PRICING

KRISTEN MCDADE

Managing Director
T: +1 713 331 1796

kristen.mcdade@cushwake.com

MATTHEW DAVIS

Senior Director
T: +1 713 331 1798

matthew.davis@cushwake.com

