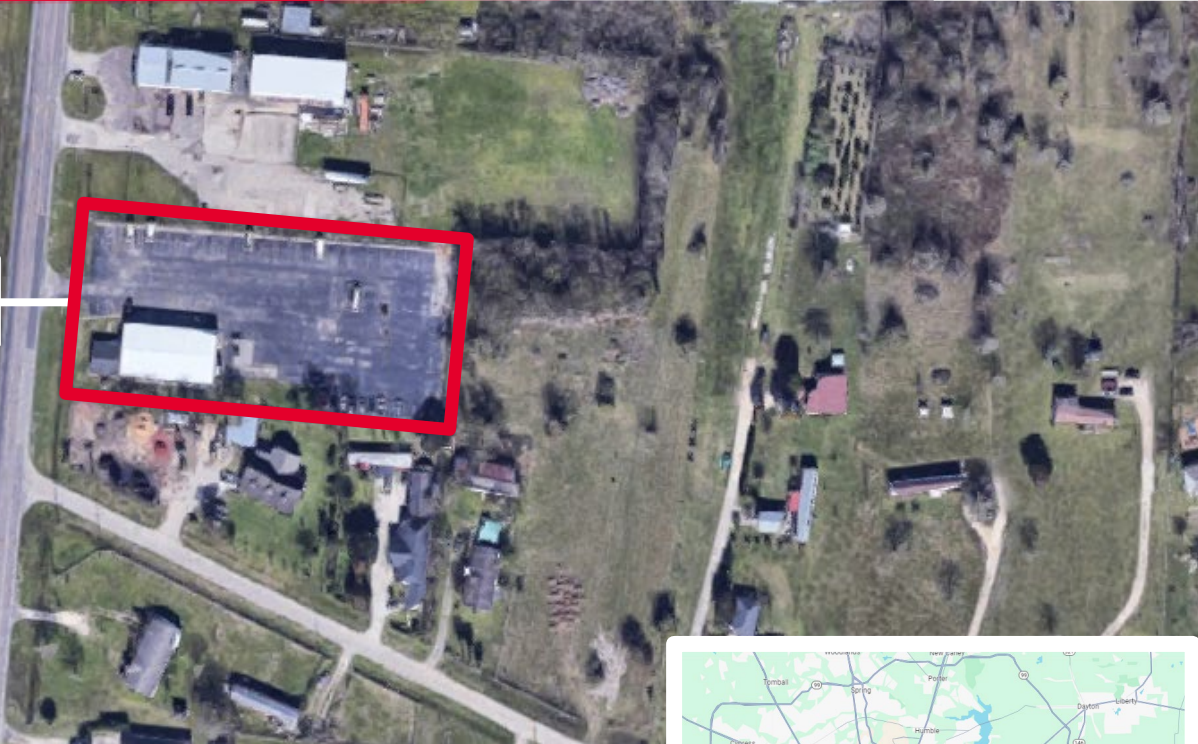


3725 FM 2403

Alvin, Texas 77511

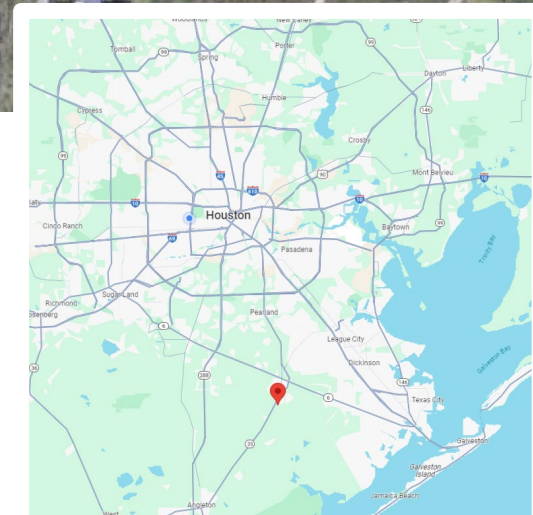


Property Site

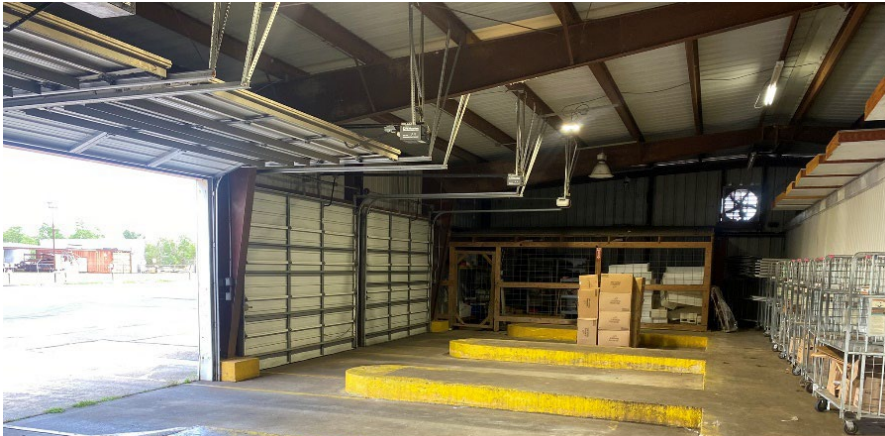


Property Highlights

- Total Size: $\pm 6,700$ sq. ft on ± 1.83 acres
- Buildings on Site:
 - Office: 1,100 SF
 - Warehouse: 5,600 SF
- Clear Height: 12'
- Do Not Disturb Tenant
- 4 grade level doors, automatic openers
- 800 amps of power
- Fully fenced and lit with 2 access gates
- Price: \$800,000



Property Photos



FOR MORE INFORMATION, PLEASE CONTACT:

B.K. "Coe" Parker, IV, SIOR
Senior Director
+1 713 963 2825
coe.parker@cushwake.com

B. Kelley Parker, III, SIOR
Vice Chairman
+1 713 963 2896
kelley.parker@cushwake.com

John F. Littman, SIOR
Executive Managing Director
+1 713 963 2862
john.littman@cushwake.com

