

3100 W ALABAMA

±1.69 ACRES WITH ±45,114 SF OFFICE BUILDING
HOUSTON, TX



KRISTEN MCDADE
Managing Director
T: +1 713 331 1796
kristen.mcdade@cushwake.com

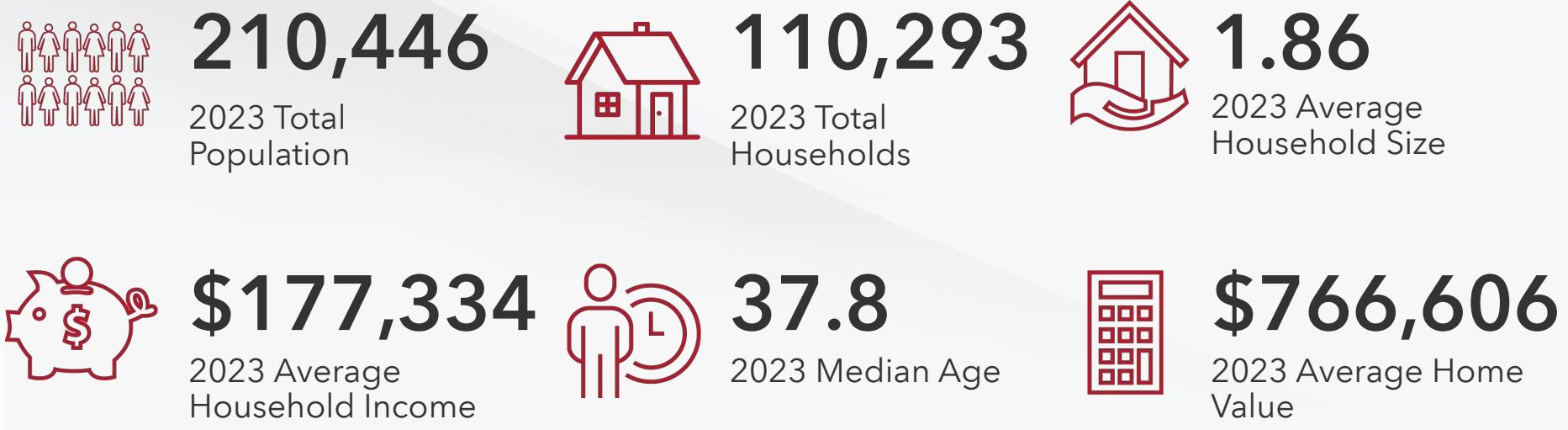
MATTHEW DAVIS
Senior Director
T: +1 713 331 1798
matthew.davis@cushwake.com

CHARLIE MCGAHREN
Associate
T: +1 713 331 1772
charlie.mcgahren@cushwake.com

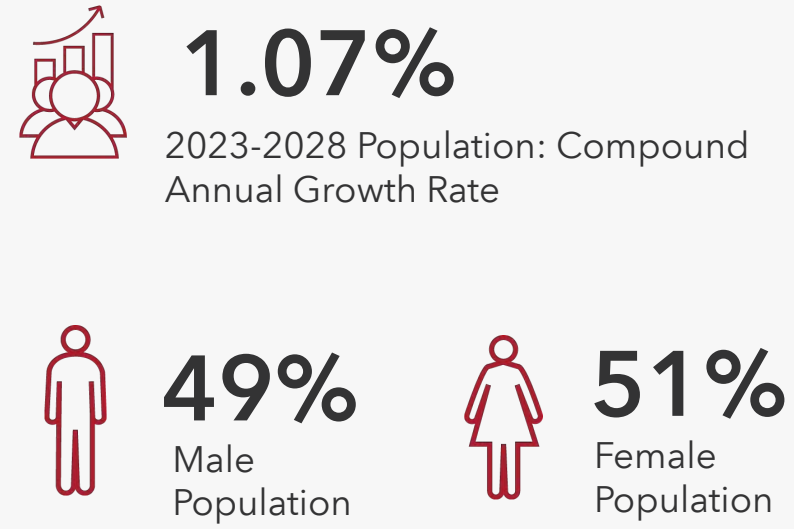


DEMOGRAPHIC OVERVIEW

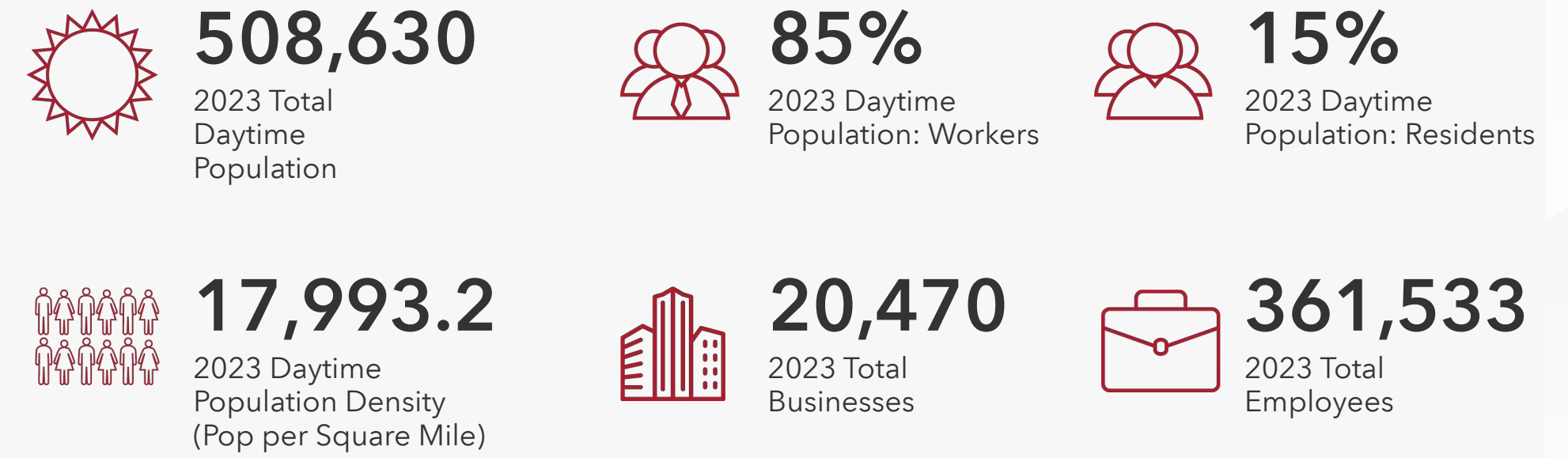
HOUSEHOLDS



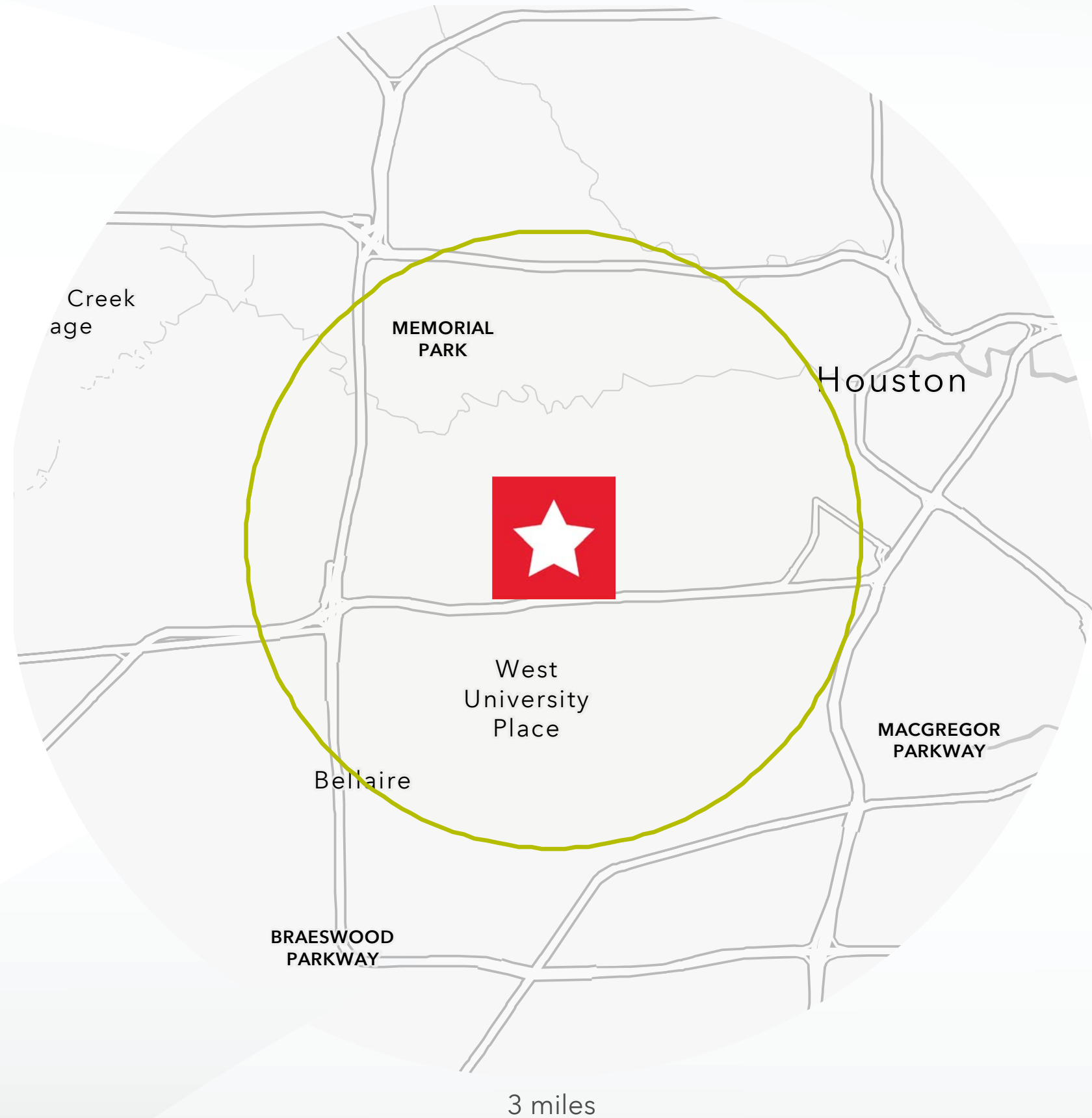
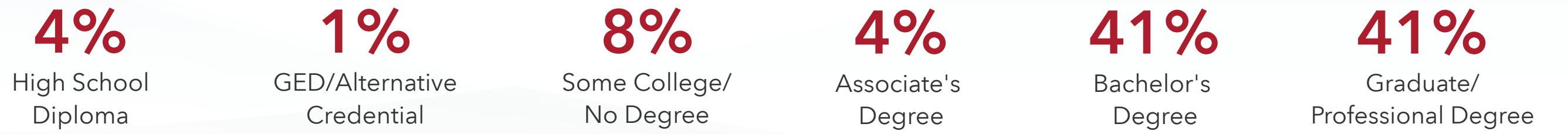
POPULATION



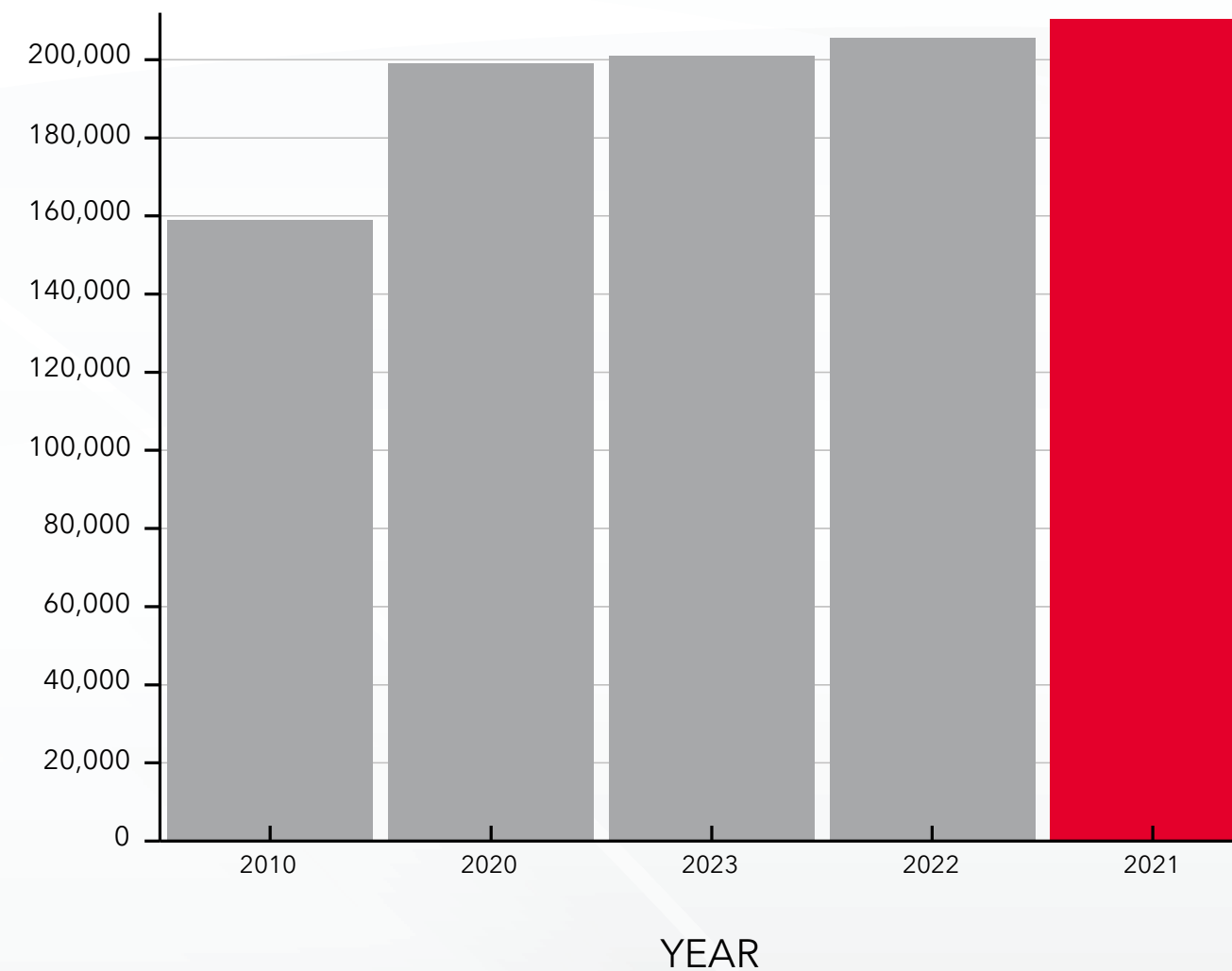
EMPLOYMENT



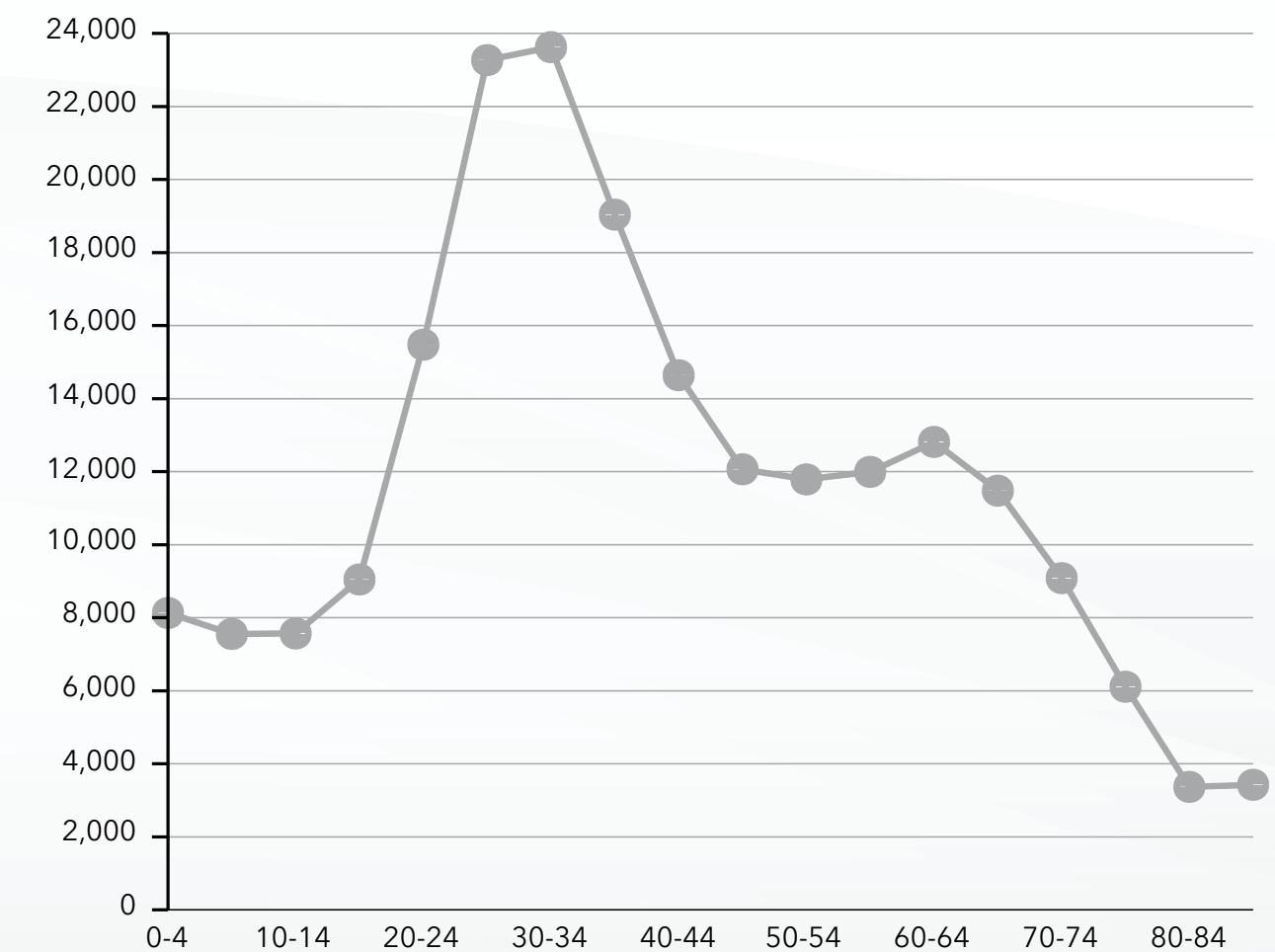
EDUCATIONAL ATTAINMENT



POPULATION TIME SERIES 2010-2023



POPULATION BY AGE GROUP





INTERSTATE
59

KIRBY DR.

WHOLE
FOODS
MARKET

KIRBY
ICE HOUSE

BAMMEL ST.

W. ALABAMA ST.

EASTSIDE ST.

WESTHEIMER RD.

LAMAR
HIGH SCHOOL

ST. JOHN'S
SCHOOL



UPTOWN/GALLERIA

RIVER OAKS DISTRICT
HIGHLAND VILLAGE

Central Market

COSTCO
WHOLESALE

GREENWAY PLAZA

ST. JOHN'S SCHOOL

LAMAR HIGH SCHOOL

RIVER OAKS BLVD.

WESTHEIMER RD.

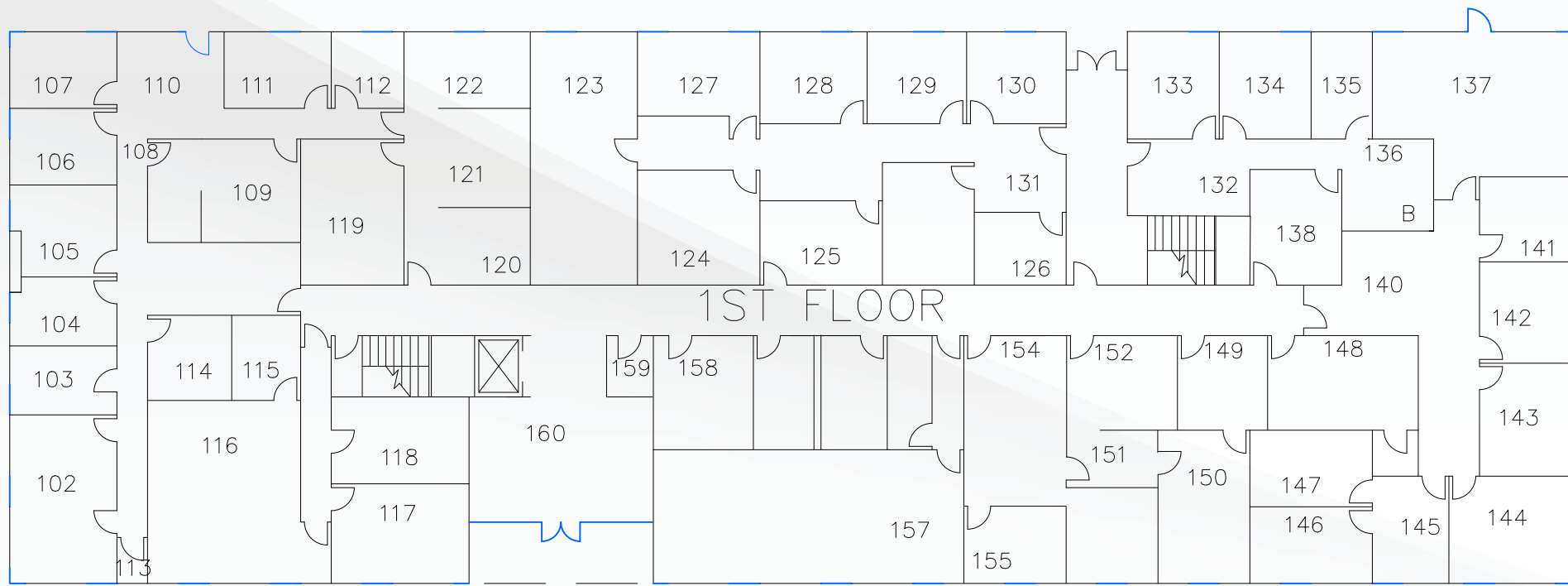
W. ALABAMA ST.

RICHMOND AVE.

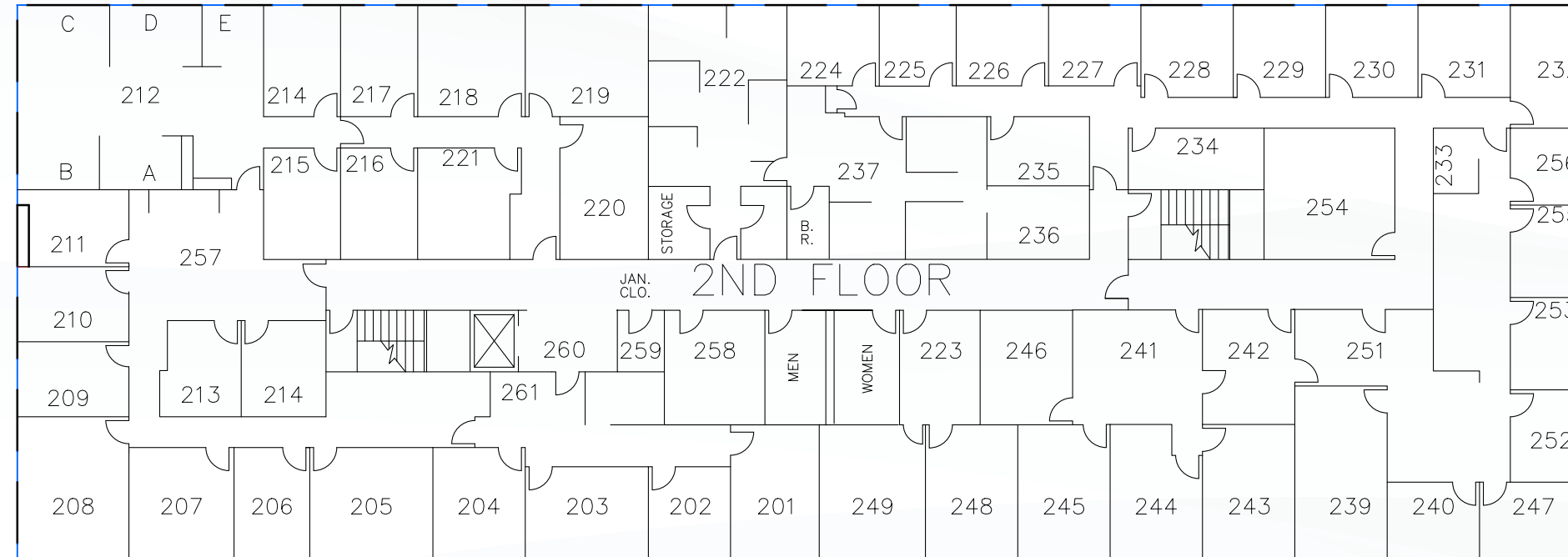
KIRBY DR.



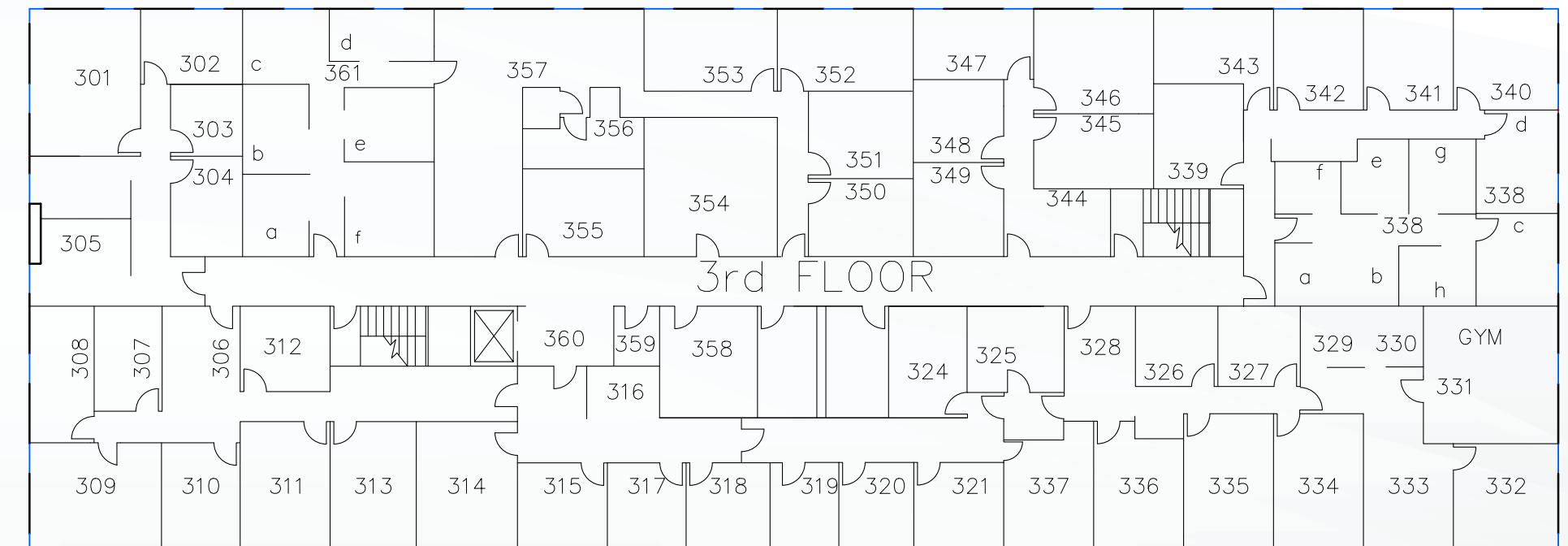
FLOOR PLANS



FIRST FLOOR



SECOND FLOOR



THIRD FLOOR

DOWNTOWN/CBD

RIVER OAKS
SHOPPING
CENTER



KIRBY DR.

W. ALABAMA ST.

EASTSIDE ST.

This well located office building is situated in the Upper Kirby/River Oaks pocket of Houston with immediate access to Houston's most desirable neighborhoods, schools, premier retail shopping and restaurants. An ideal location amongst Houston's top Live, Work, Play destinations of town.

PROPERTY HIGHLIGHTS

- ±1.69 acres in Upper Kirby / River Oaks
- ±45,114 SF Office Building (Three Floors)
- Unrestricted
- Building is owner occupied and has been since 1985
- Ideal for Investment, Redevelopment, or for an Owner - Occupier

Contact Brokers for more information

KRISTEN MCDADE
Managing Director
T: +1 713 331 1796
kristen.mcdade@cushwake.com

MATTHEW DAVIS
Senior Director
T: +1 713 331 1798
matthew.davis@cushwake.com

CHARLIE MCGAHREN
Associate
T: +1 713 331 1772
charlie.mcgharen@cushwake.com

©2024 Cushman & Wakefield. All rights reserved. The information contained in this communication is strictly confidential. This information has been obtained from sources believed to be reliable but has not been verified. NO WARRANTY OR REPRESENTATION, EXPRESS OR IMPLIED, IS MADE AS TO THE CONDITION OF THE PROPERTY (OR PROPERTIES) REFERENCED HEREIN OR AS TO THE ACCURACY OR COMPLETENESS OF THE INFORMATION CONTAINED HEREIN, AND SAME IS SUBMITTED SUBJECT TO ERRORS, OMISSIONS, CHANGE OF PRICE, RENTAL OR OTHER CONDITIONS, WITHDRAWAL WITHOUT NOTICE, AND TO ANY SPECIAL LISTING CONDITIONS IMPOSED BY THE PROPERTY OWNER(S). ANY PROJECTIONS, OPINIONS OR ESTIMATES ARE SUBJECT TO UNCERTAINTY AND DO NOT SIGNIFY CURRENT OR FUTURE PROPERTY PERFORMANCE.

