

# THE CHRYSTIE

229 CHRYSTIE STREET



EXCLUSIVE LEASING AGENT:

 CUSHMAN &  
WAKEFIELD

# THE CHRYSTIE

LOWER EAST SIDE



## RETAIL SPACE AVAILABLE

229 CHRYSTIE STREET

CROSS STREETS: Between East Houston & Stanton Streets

GROUND FLOOR: 1,117 SF

FRONTAGE: 50'+/- of frontage along Chrystie Street

CEILING HEIGHT: 10'

POSSESSION: Immediate

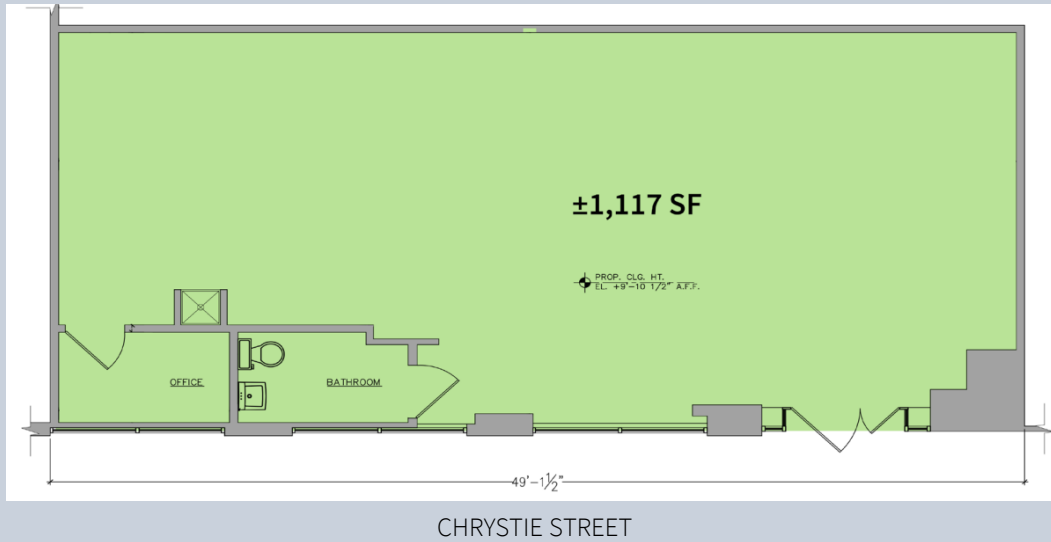
ASKING RENT: Upon Request

**NEIGHBORS:** Whole Foods, Public Hotel, Russ & Daughters, Equinox, Marshall's, Katz's Delicatessen, The Butcher's Daughter, Forsythia, Freemans, Fools Gold NYC, The Box, The Bowery Ballroom, Ainslie Bowery, Morgenstern's BANANAS, Supreme, Sézane, Wells Fargo, Ray's, Tacombi

### KEY FEATURES:

- At the base of The Chrystie, a premier luxury rental building with 361 units
- Co-tenants with Whole Foods
- Directly adjacent to the Public Hotel with 370 luxury rooms
- Open to all uses
- 27.1M visits to the Lower East Side in 2023. Up 4.1% from 2022
- Directly across the street from the 2<sup>nd</sup> Avenue **F** subway station (200 feet)
- Nearby subway lines also include the 6, B, D, F, M, J, Z, N & R

# FLOORPLAN



GROUND FLOOR: 1,117 SF



# AREA MAP



# THE CHRYSTIE

229 CHRYSTIE STREET

FOR RETAIL LEASING INQUIRIES PLEASE CONTACT:

Neil Seth  
212 841 5063  
[neil.seth@cushwake.com](mailto:neil.seth@cushwake.com)

Kenji Ota  
212 841 5909  
[kenji.ota@cushwake.com](mailto:kenji.ota@cushwake.com)

Kathryn Cruz  
212 660 7766  
[kathryn.cruz@cushwake.com](mailto:kathryn.cruz@cushwake.com)

Jennifer Konefsky  
212 698 2608  
[jennifer.konefsky@cushwake.com](mailto:jennifer.konefsky@cushwake.com)

EXCLUSIVE LEASING AGENT:

