



FOR LEASE OR BTS

# SANTA FE COMMERCE CENTER

15620 SANTA FE TRAIL DRIVE, LENEXA, KS



**CUSHMAN &  
WAKEFIELD**

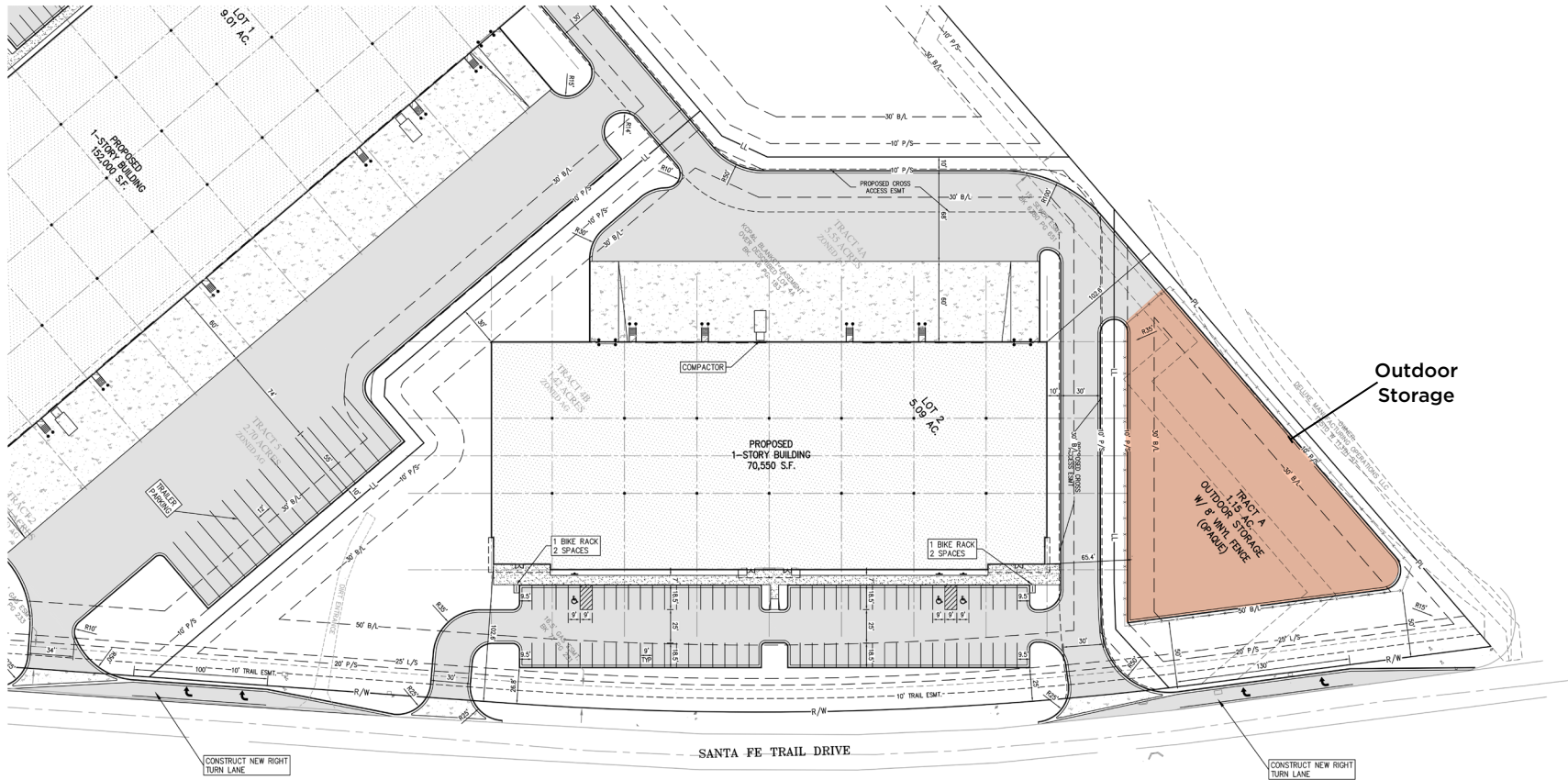
# PROPERTY HIGHLIGHTS

- Proposed Single Load Industrial Buildings for Lease or BTS
- **Building 1:**
  - » 151,425 GSF
  - » Divisible to 30,000± SF
  - » 20 Dock High Doors
  - » 2 Drive In Doors
  - » 210' Deep
  - » ESFR Sprinkler
  - » Additional Trailer Parking Available
- **Building 2:**
  - » 70,130 GSF
  - » Divisible to 27,500± SF
  - » 12 Dock High Doors
  - » 2 Drive In Doors
  - » 170' Deep
- Great Visibility and Signage from I-35
- Infill Lenexa Location
- Potential for 10 Year - 55% Tax Abatement
- Modern Tilt-Wall Construction
- PDP Approved by Lenexa
- BP2 Zoning

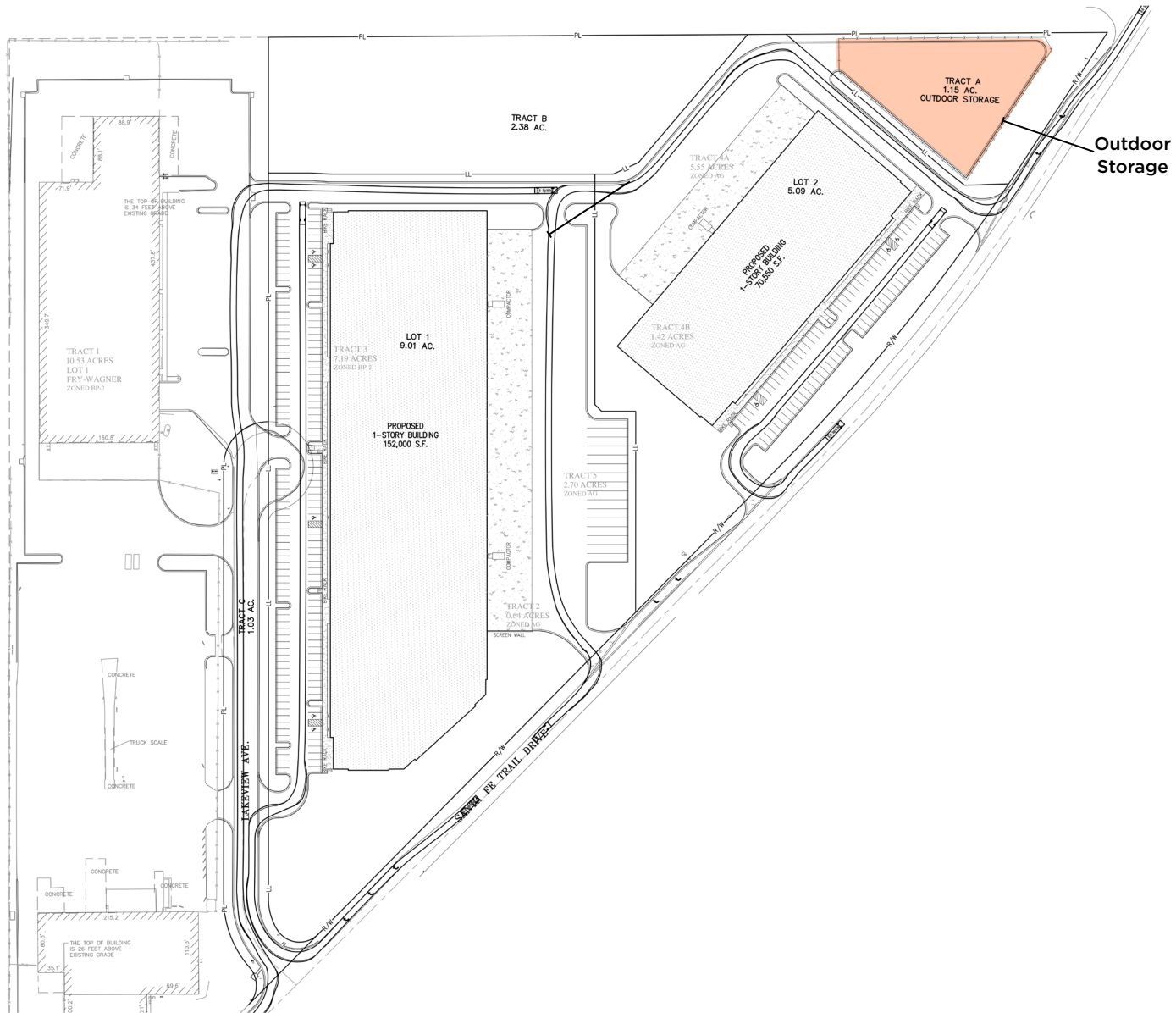




# FLOOR PLAN- BLDG 2



# SITE PLAN



# AERIAL MAP



**FOR MORE INFORMATION:**

**ROB M. HOLLAND, CCIM**

*Managing Director*

+1 816 412 0214

rob.holland@cushwake.com

**JOSEPH S. ACCURSO**

*Vice Chairman*

+1 816 412 0216

joe.accurso@cushwake.com

©2024 Cushman & Wakefield. All rights reserved. The information contained in this communication is strictly confidential. This information has been obtained from sources believed to be reliable but has not been verified. NO WARRANTY OR REPRESENTATION, EXPRESS OR IMPLIED, IS MADE AS TO THE CONDITION OF THE PROPERTY (OR PROPERTIES) REFERENCED HEREIN OR AS TO THE ACCURACY OR COMPLETENESS OF THE INFORMATION CONTAINED HEREIN, AND SAME IS SUBMITTED SUBJECT TO ERRORS, OMISSIONS, CHANGE OF PRICE, RENTAL OR OTHER CONDITIONS, WITHDRAWAL WITHOUT NOTICE, AND TO ANY SPECIAL LISTING CONDITIONS IMPOSED BY THE PROPERTY OWNER(S). ANY PROJECTIONS, OPINIONS OR ESTIMATES ARE SUBJECT TO UNCERTAINTY AND DO NOT SIGNIFY CURRENT OR FUTURE PROPERTY PERFORMANCE.

