



**CUSHMAN &  
WAKEFIELD**



**380 &**

**5,500 SF & 14,000 SF  
FOR LEASE**

**390 TAPSCOTT RD**

**380 TAPSCOTT RD #3 & 390 TAPSCOTT RD #5-7**

**Toronto**

# DETAILS

	380 Tapscott Rd #3	390 Tapscott Rd #5-7
<b>Availability:</b>	Total Size: 5,500 SF Office Size: Approx. 550 SF	Total Size: 14,000 SF Office Size: Approx. 3,000 SF
<b>Ceiling Height:</b>	16 ft clear	19'6" ft clear
<b>Shipping:</b>	2 Truck Level	3 Truck Level
<b>Sprinklers:</b>	Standard hazard	Standard hazard
<b>Heating:</b>	Rooftop HVAC unit office, suspended gas heaters in warehouse	Rooftop HVAC unit office, suspended gas heaters in warehouse
<b>Asking Rental Rate:</b>	\$18.50 PSF	\$18.50 PSF
<b>TMI:</b>	\$5.06 PSF (2024)	\$5.06 PSF (2024)
<b>Occupancy:</b>	August 1, 2024	October 1, 2024

# FEATURES

- Located at Markham Rd / Finch Ave. East
- Shipping apron accommodates 53 ft tractor - trailers
- Fast and convenient access to Highway 401
- Public transportation stop located immediately in front of the campus
- Professionally managed campus of buildings

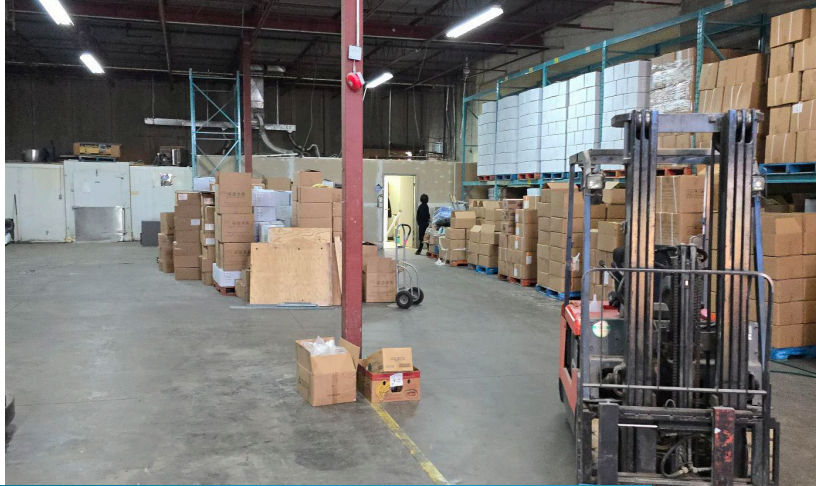
## 380 Tapscott Rd Unit 3

- Rare small industrial unit with multiple loading doors
- Existing walk-in coolers are available from the current tenant

## 390 Tapscott Rd Unit 5-7

- Excellent clear ceiling height
- "Wide" configuration of warehouse (not long and narrow)

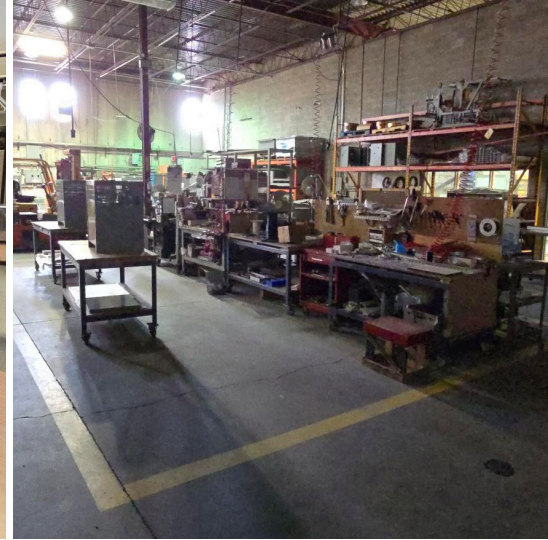




380 TAPSCOTT RD UNIT #3 - 5,500 SF



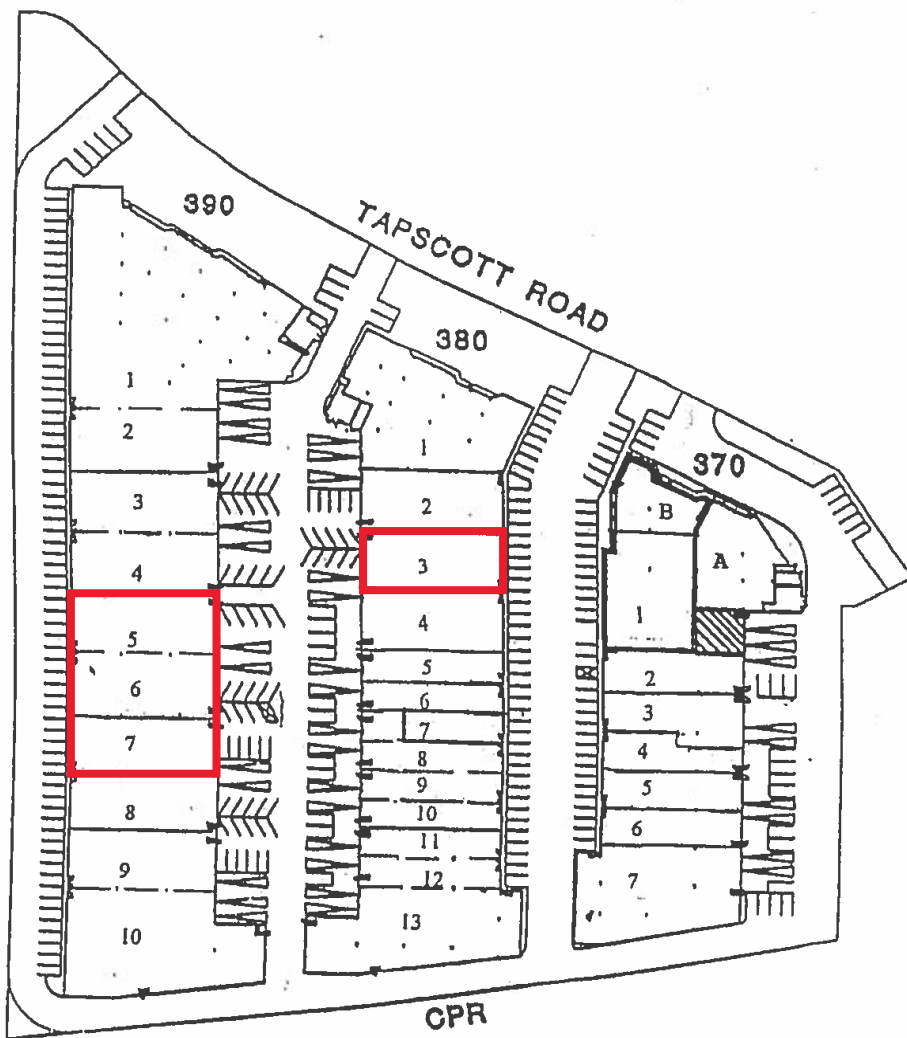
390 TAPSCOTT RD UNITS #5-7 - 14,000 SF



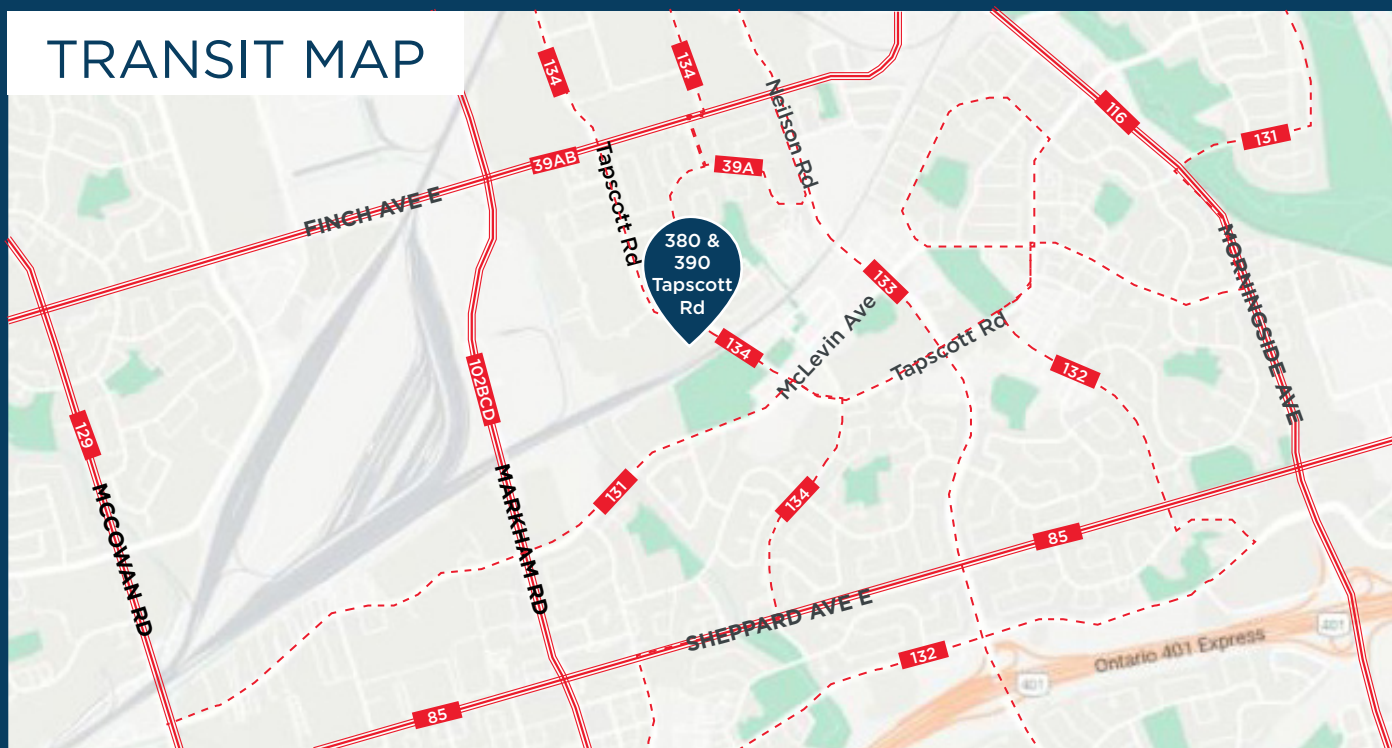


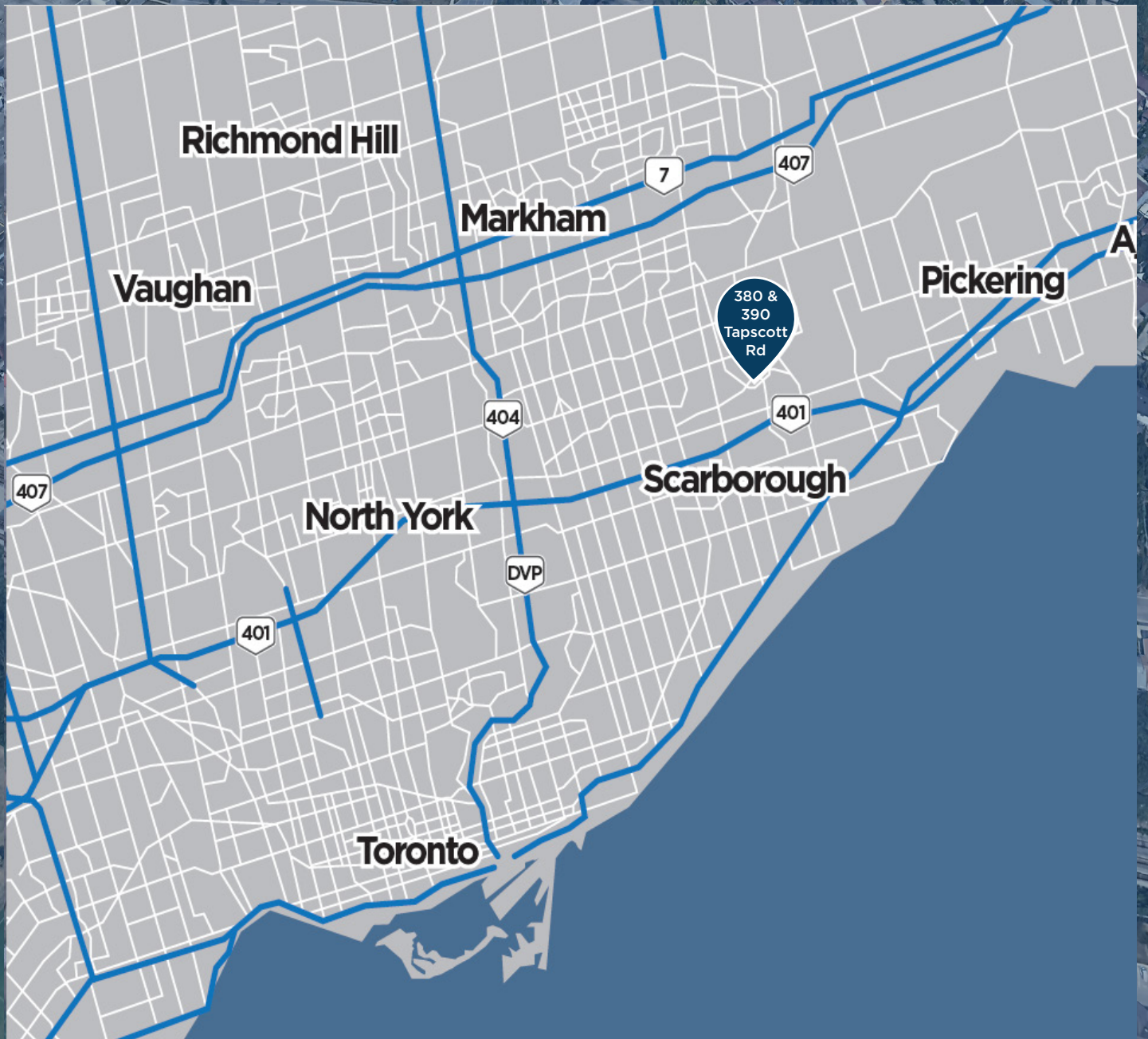
# 380 TAPSCOTT RD UNIT #3 - 5,500 SF

## 390 TAPSCOTT RD UNITS #5-7 - 14,000 SF



### TRANSIT MAP





FOR MORE INFORMATION PLEASE CONTACT:

**GREG RACIC\***  
Vice President  
Mobile: 416 629 4734  
Office: 416 756 5465  
greg.racic@cushwake.com

**Cushman & Wakefield ULC, Brokerage**  
3100 Steeles Avenue East, Suite 1100  
Markham, ON L3R 8T3  
Canada

**Cushman & Wakefield ULC, Brokerage** \*Sales Representative  
No warranty or representation, expressed or implied, is made as to the accuracy of the information contained herein, and same is submitted subject to errors, omissions, change of price, rental or other conditions, withdrawal without notice, and to any specific listing condition, imposed by our principals.

