



3,338 RSF Class “A” Office Space

SPACE DETAILS

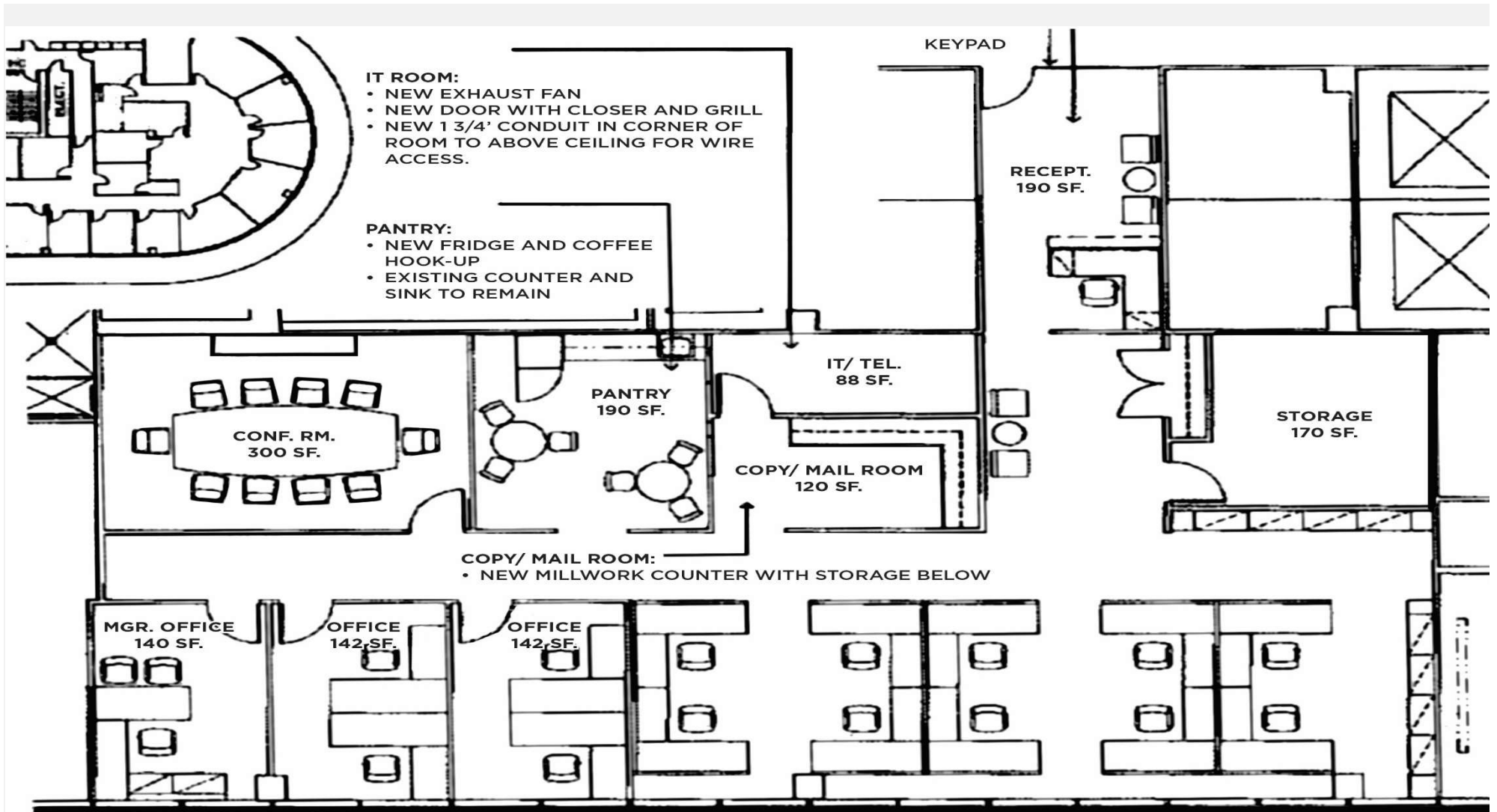
- **RATE:** Negotiable
- **OPEX:** \$12.25/RSF (2021 est.)
- **TERM:** Through July 31, 2024
- **AVAILABILITY:** Immediate
- **PARKING:** “Up to” 10 Spaces
- **Unreserved:** \$45/month
- **Reserved:** \$65/month
- **FURNITURE:** Available

KEY FEATURES

- 3-4 Private Offices
- 1 Conference Room
- 10 Workstations
- Reception & Kitchen Area
- IT Room
- Mail Room & Storage Area

Chad D. Huffman
Associate
+1 713 963 2887 direct
+1 713 870 8903 cell

chad.huffman@cushwake.com
1330 Post Oak Boulevard
Houston, TX 77056



Floor Plan



FOR SUBLEASE

Millennium Tower- 10375 Richmond Ave

Houston, Texas





FOR SUBLEASE

Millennium Tower- 10375 Richmond Ave

Houston, Texas

