

MILLENNIUM TOWER

10375 Richmond Ave, Houston, TX 77042

3,405 RSF

FOR SUBLEASE



SPACE DETAILS

Premises 3,405 RSF Part 19th Floor	Term Through 12/31/24
“Net” Rental Rate Negotiable	Furniture Available
2020 OPEX \$12.25/RSF	Parking 3.0/1,000 \$45/month UNR
Availability Immediate	

KEY FEATURES

Space newly built out in 2019

.....
5 private offices

.....
Cubes for 7-9 employees

.....
Additional open space available for more cubes

.....
Elevator lobby exposure

.....
Reception

.....
Large storage room

.....
2 offices

.....
8-10 person conference room table w/ AV & white board

.....
Large break area w/ sink, microwave, water line & full-size refrigerator



**CUSHMAN &
WAKEFIELD**

cushmanwakefield.com

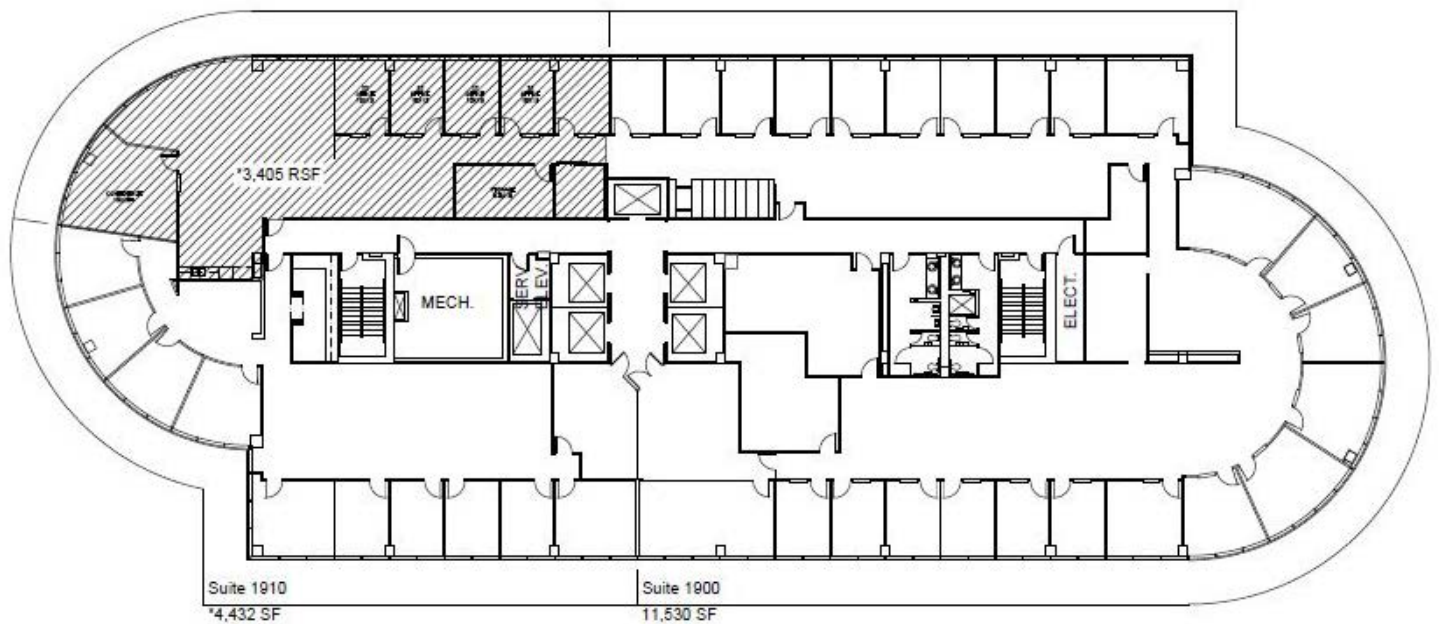
MILLENNIUM TOWER

10375 Richmond Ave, Houston, TX 77042

3,405 RSF

FOR SUBLEASE

FLOOR PLAN



**CUSHMAN &
WAKEFIELD**

cushmanwakefield.com

MILLENNIUM TOWER

10375 Richmond Ave, Houston, TX 77042

3,405 RSF

FOR SUBLEASE

PROPERTY PHOTOS



GRAYSON E. WALLACE

Senior Associate
+1 713 963 2842
grayson.wallace@cushwake.com

1330 Post Oak Blvd, Suite 2700
Houston, Texas
Main +1 713 877 1700
cushmanwakefield.com



**CUSHMAN &
WAKEFIELD**

cushmanwakefield.com