

# MILLENNIUM TOWER

10375 Richmond Ave, Houston, TX 77042

3,405 RSF

FOR SUBLEASE



## SPACE DETAILS

<b>Premises</b> 3,405 RSF Part 19th Floor	<b>Term</b> Through 12/31/24
<b>“Net” Rental Rate</b> Negotiable	<b>Furniture</b> Available
<b>2020 OPEX</b> \$12.25/RSF	<b>Parking</b> 3.0/1,000 \$45/month UNR
<b>Availability</b> Immediate	

## KEY FEATURES

Space newly built out in 2019

.....  
5 private offices

.....  
Cubes for 7-9 employees

.....  
Additional open space available for more cubes

.....  
Elevator lobby exposure

.....  
Reception

.....  
Large storage room

.....  
2 offices

.....  
8-10 person conference room table w/ AV & white board

.....  
Large break area w/ sink, microwave, water line & full-size refrigerator



**CUSHMAN &  
WAKEFIELD**

cushmanwakefield.com

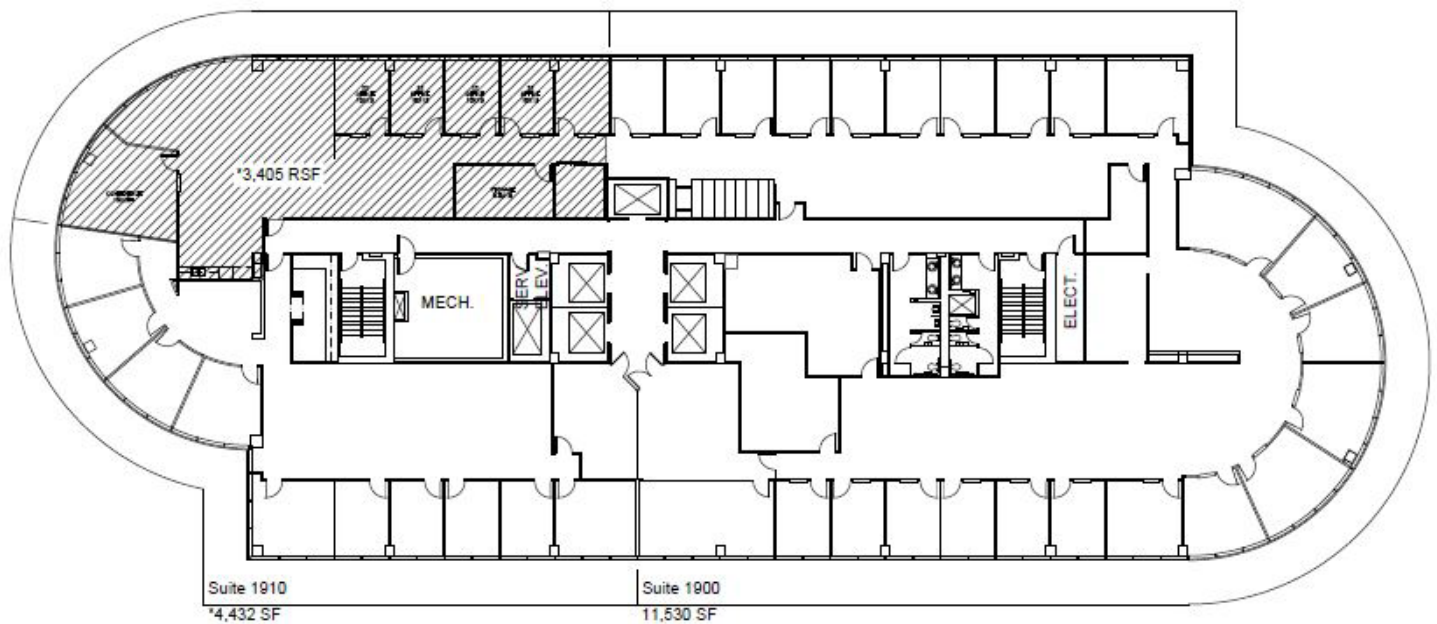
# MILLENNIUM TOWER

10375 Richmond Ave, Houston, TX 77042

3,405 RSF

FOR SUBLEASE

## FLOOR PLAN



**CUSHMAN &  
WAKEFIELD**

[cushmanwakefield.com](http://cushmanwakefield.com)

# MILLENNIUM TOWER

10375 Richmond Ave, Houston, TX 77042

3,405 RSF

FOR SUBLEASE

## PROPERTY PHOTOS



### GRAYSON E. WALLACE

Senior Associate  
+1 713 963 2842  
grayson.wallace@cushwake.com

1330 Post Oak Blvd, Suite 2700  
Houston, Texas  
Main +1 713 877 1700  
[cushmanwakefield.com](http://cushmanwakefield.com)



**CUSHMAN &  
WAKEFIELD**

[cushmanwakefield.com](http://cushmanwakefield.com)