



FOR SUBLEASE

**8330 WARD PARKWAY
KANSAS CITY, MO**

PROPERTY HIGHLIGHTS

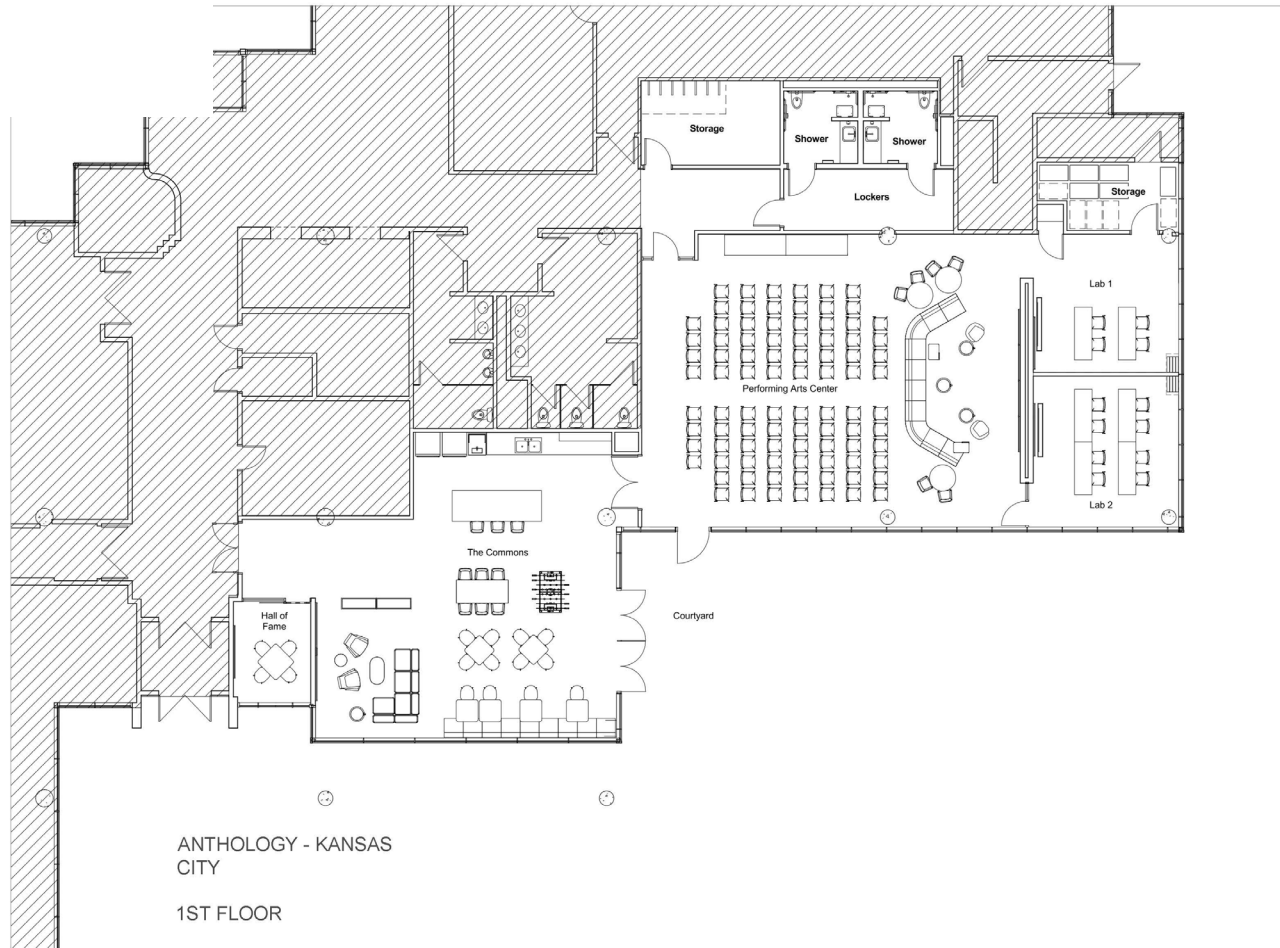
- 6,100 SF available immediately on the 1st floor
- 19,309 SF available immediately on the 5th floor
- Asking Rent: Negotiable
- Sublease term through 3/31/2026
- Modern, efficient layout with high-end finishes throughout
- Open floor plan featuring one-hundred-five (105) workstations, fifteen (15) private offices, two (2) medium-sized conference rooms, one (1) large conference room, one (1) large kitchen and collaborate space
- Furniture available
- On-site cafe
- Close proximity to Ward Parkway restaurants and shops
- Secured, covered parking free of charge

4600 Madison Avenue
Suite 800
Kansas City, MO 64112
Main +1 816 221 2200
Fax +1 816 842 2798
cushmanwakefield.com

FOR SUBLEASE
8330 Ward Parkway | Kansas City, MO



FLOOR PLAN -
1ST FLOOR



Contact

CONOR TWIBELL
Director
+1 816 412 0244
conor.twibell@cushwake.com

FLOOR PLAN -
5TH FLOOR



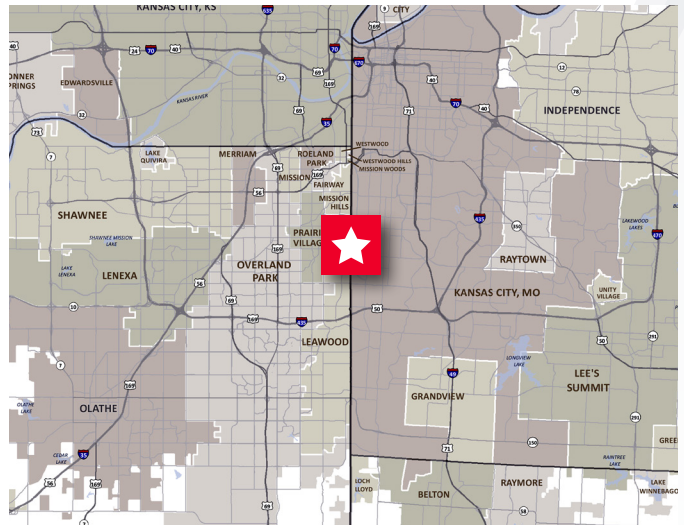
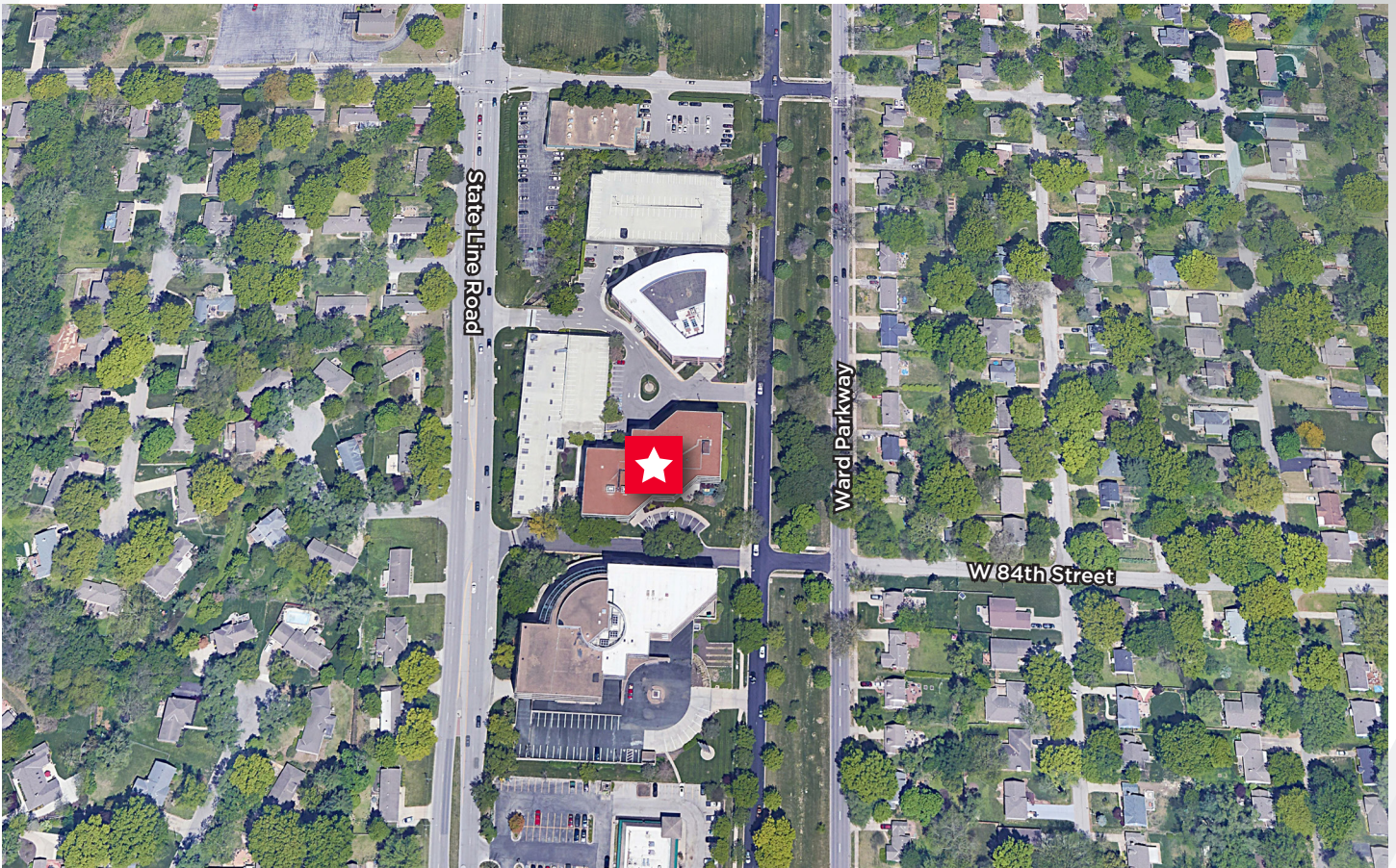
Contact

CONOR TWIBELL
Director
+1 816 412 0244
conor.twibell@cushwake.com

FOR SUBLEASE
8330 Ward Parkway | Kansas City, MO



AERIAL



Contact

CONOR TWIBELL
Director
+1 816 412 0244
conor.twibell@cushwake.com