

±175,407 SF AVAILABLE FOR SUBLEASE

COPPER CROSSING BUILDING 3

6320 WEST 700 SOUTH
SALT LAKE CITY, UT



CONTACT
PHILLIP EILERS
Senior Director
+1 801 303 5426
phillip.eilers@cushwake.com

JON SCHRECK
Director
+1 801 303 5531
jon.schreck@cushwake.com



**CUSHMAN &
WAKEFIELD**

COPPER CROSSING BUILDING 3

BUILDING SF438,047 SF

AVAILABLE FOR SUBLEASE175,407 SF

OFFICE1,405 SF

CLEAR HEIGHT36'

COLUMN SPACING56'x65'

DOCK DOORS32 

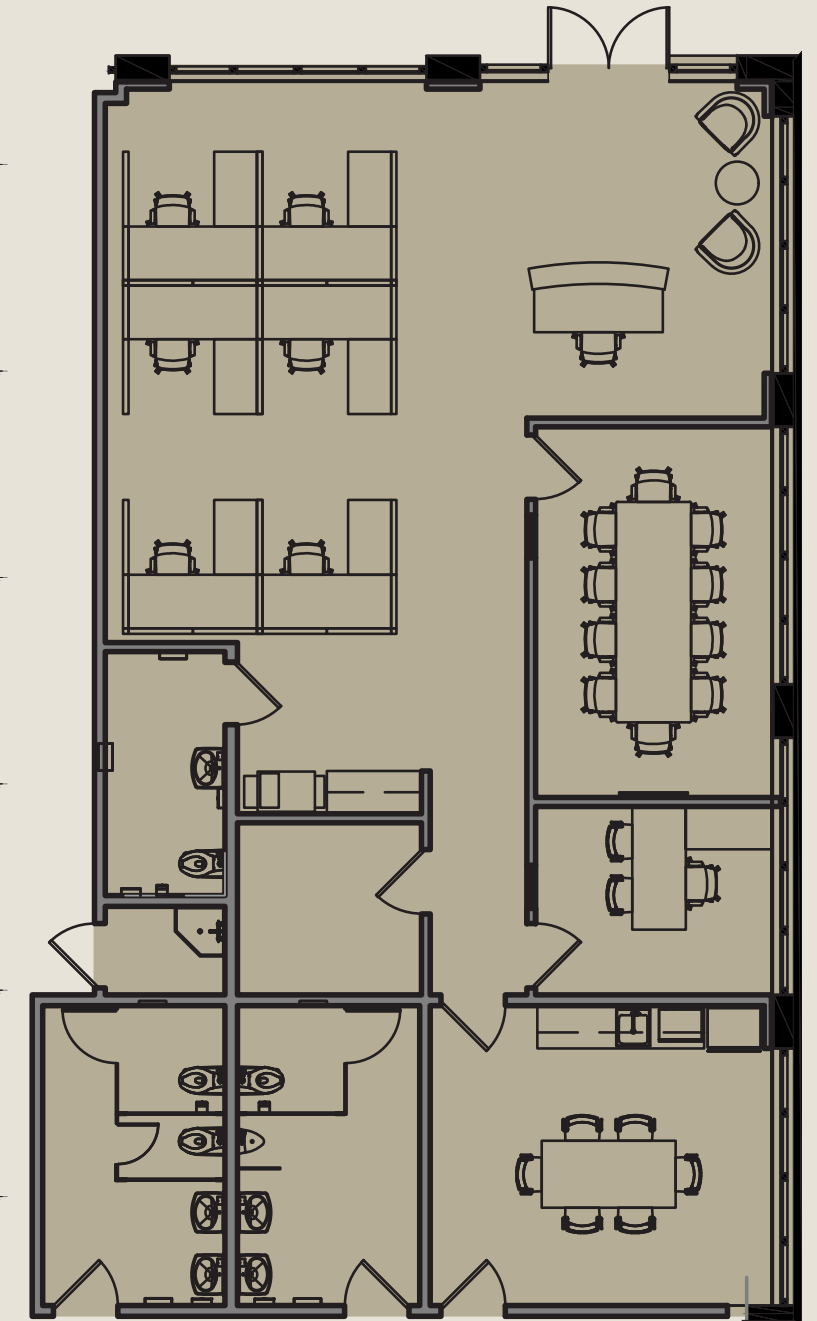
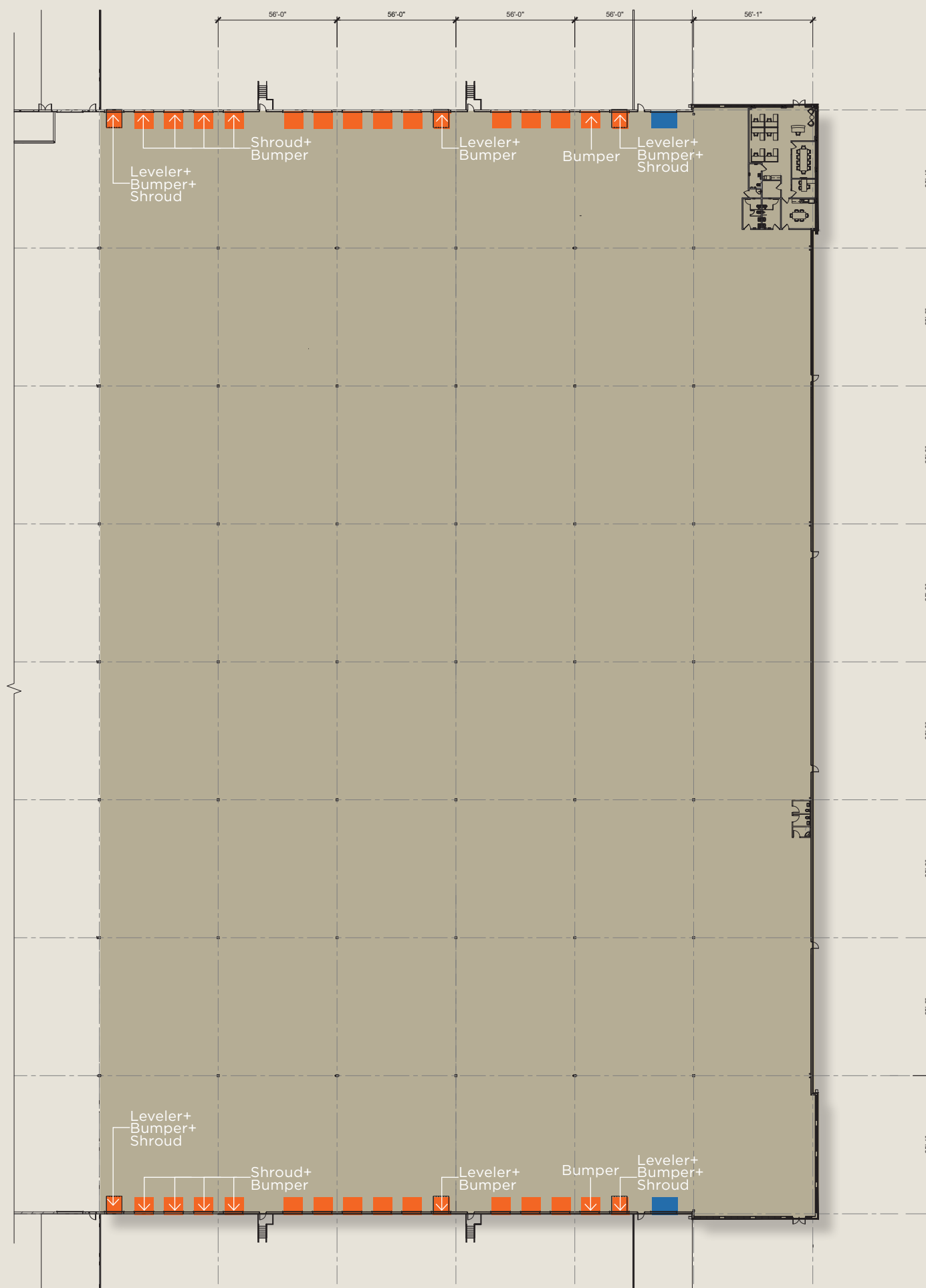
GROUND LEVEL DOORS2 

POWERTBD

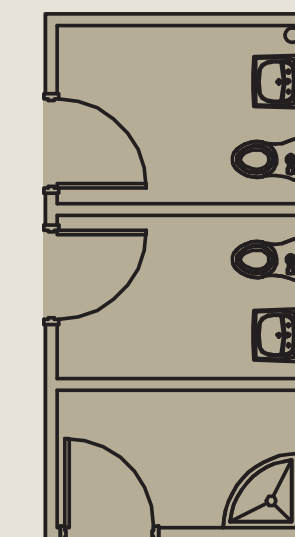
LIGHTSTo Suit

FIRE SUPPRESSIONESFR

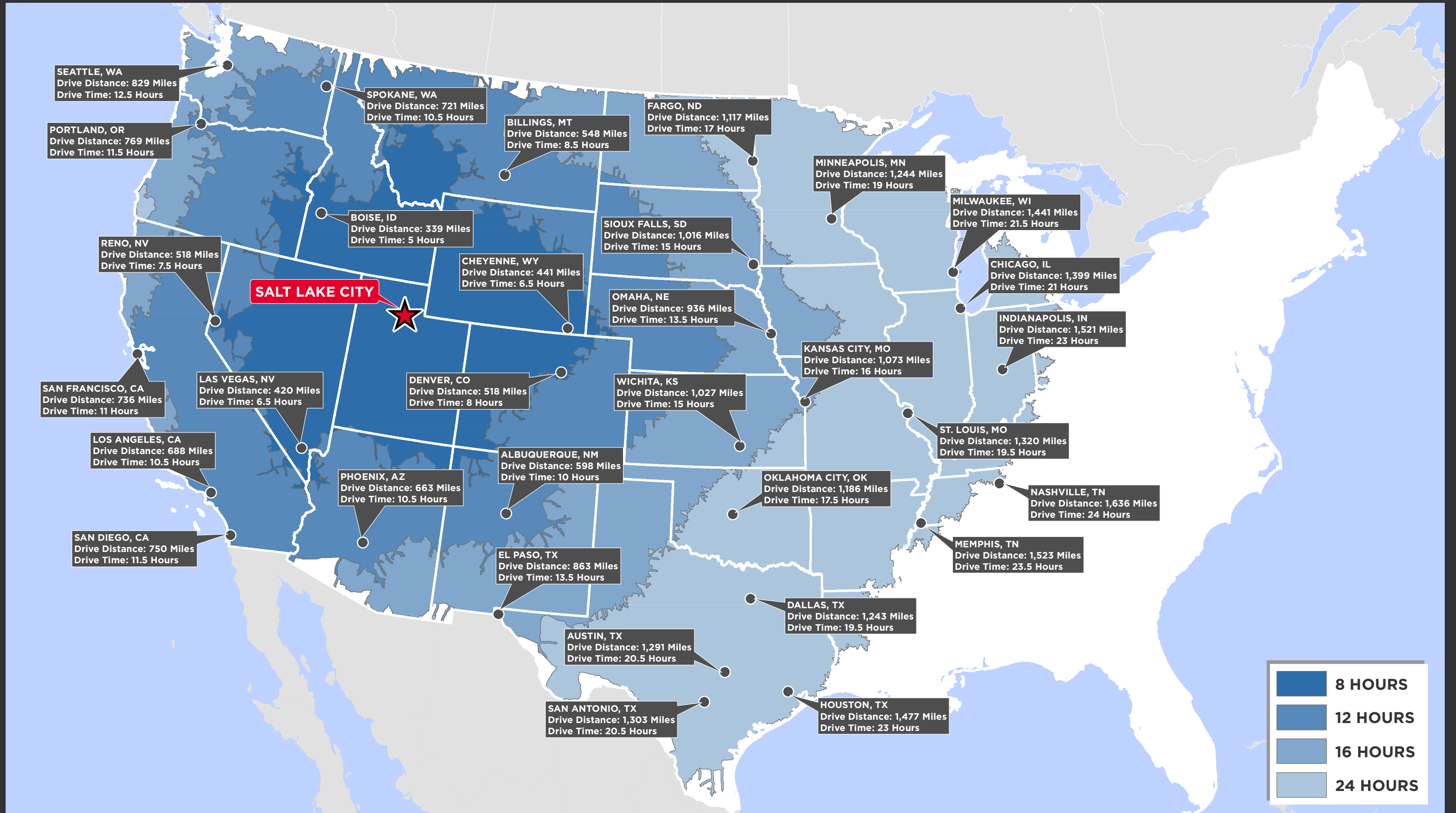
- TRUCK PARKING AVAILABLE
- CROSS-DOCK CONFIGURATION
- IMMEDIATE OCCUPANCY
- MASTER LED: APRIL 30, 2032



OFFICE: 1,405 SF



WAREHOUSE
RESTROOMS &
JANITOR CLOSET



COPPER CROSSING SURROUNDING USERS



6 Miles

to/from Salt Lake City International Airport

0.8 Miles

to/from I-80 via 5600 West

2.6 Miles

to/from Highway 201 via 5600 West

1.7 Miles

to the Union Pacific Intermodal Hub

±175,407 SF AVAILABLE FOR SUBLEASE

COPPER CROSSING BUILDING 3

6320 WEST 700 SOUTH
SALT LAKE CITY, UT



CONTACT
PHILLIP EILERS
Senior Director
+1 801 303 5426
phillip.eilers@cushwake.com

JON SCHRECK
Director
+1 801 303 5531
jon.schreck@cushwake.com



**CUSHMAN &
WAKEFIELD**

170 South Main Street, 1600 • Salt Lake City, UT 84101 • +1 801 322 2000 • cushmanwakefield.com

Cushman & Wakefield Copyright 2024. No warranty or representation, express or implied, is made to the accuracy or completeness of the information contained herein, and same is submitted subject to errors, omissions, change of price, rental or other conditions, withdrawal without notice, and to any special listing conditions imposed by the property owner(s). As applicable, we make no representation as to the condition of the property (or properties) in question. (path: G:\UT\SLI\Shared\Apps\Gigas\1 - Projects\Eilers_Phillip\1 - Flyers\CopperCrossing3)