

# ±7,251 SF

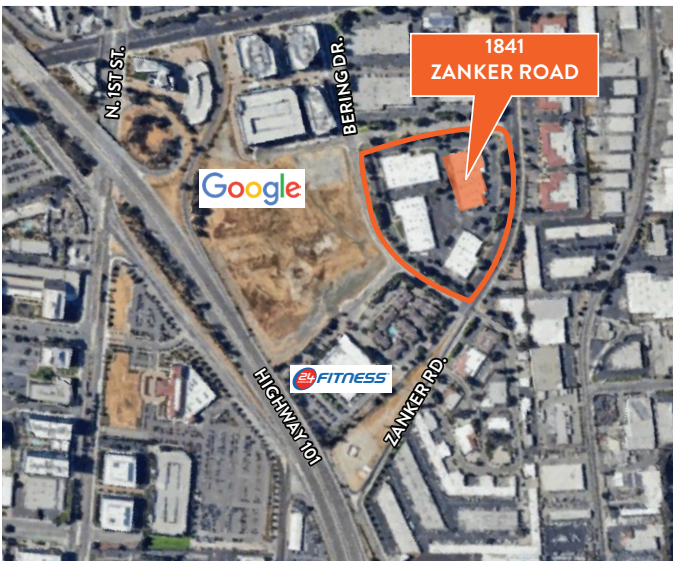


Office/R&D Space For Lease



## TriPoint Business Park

1841 Zanker Road, Suite 10  
San Jose, CA 95112



### LOCATION

1841 Zanker Road of TriPoint Business Park is located on the corner of Zanker Road and Devcon Drive and parallels Highway 101 in San Jose, CA.

### FACILITY

- Class "A" Interiors Throughout
- Expanded Window Line
- 10.5' Drop Ceiling Throughout
- Great Expansion Potential within the Park
- ±3.47/1,000 Parking

### ADVANTAGES AND AMENITIES

- Walking Distance to Light Rail Station
- Two Blocks from 24 Hour Fitness
- Less than One Mile from San Jose International Airport

# ±7,251 SF

## Office/R&D Space For Lease



**Alan Guterman**  
alan.guterman@cushwake.com  
ph +1 408 615 3414  
cell +1 408 888 0881  
Lic #00884495  
300 Santana Row, Fifth Floor  
San Jose, CA 95128

**Jon DeCoite**  
jon.decoite@cushwake.com  
ph +1 408 615 3408  
cell +1 408 843 3499  
LIC #01471300  
300 Santana Row, Fifth Floor  
San Jose, CA 95128

**Kelly Yoder**  
kelly.yoder@cushwake.com  
ph +1 408 615 3427  
cell +1 408 439 6672  
LIC #01821117  
300 Santana Row, Fifth Floor  
San Jose, CA 95128

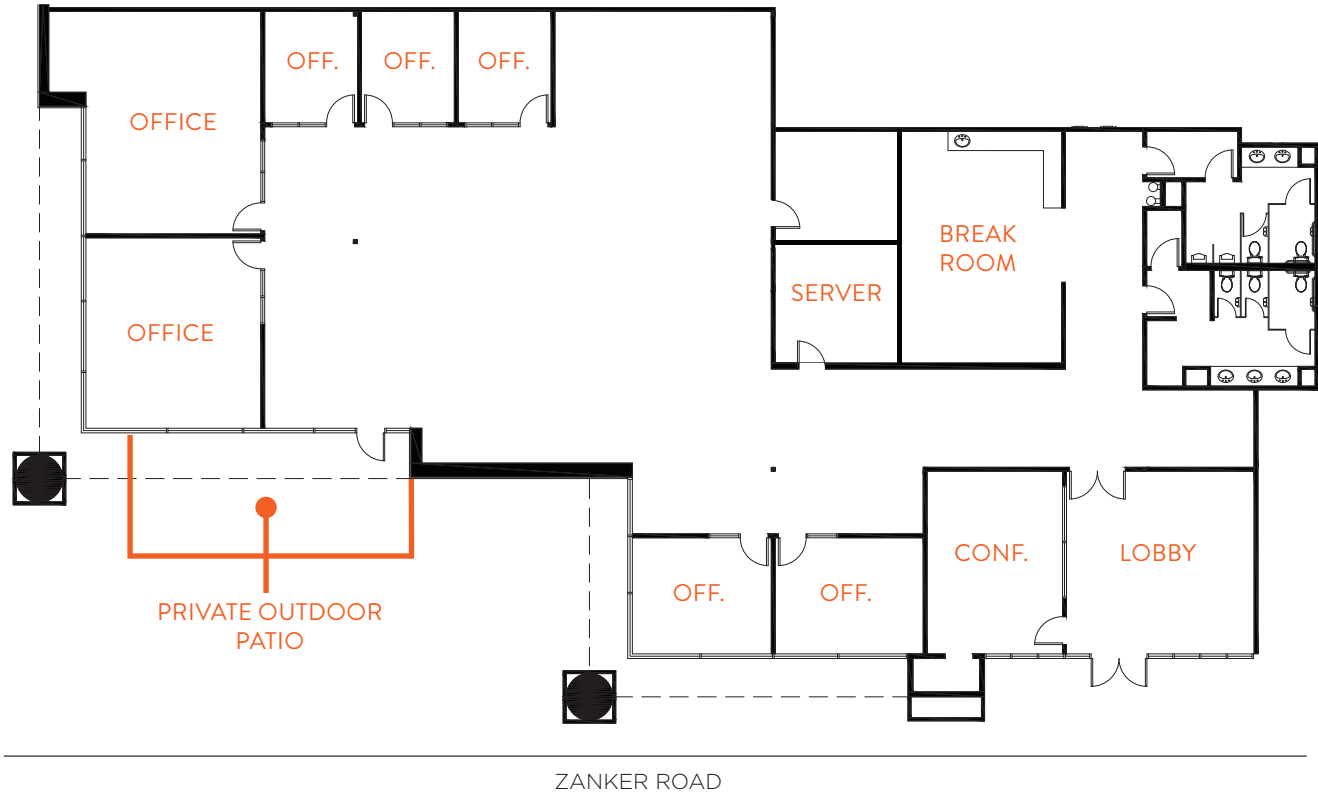
**Steve Horton**  
steve.horton@cushwake.com  
ph +1 408 615 3412  
cell +1 408 726 1010  
LIC #01127340  
300 Santana Row, Fifth Floor  
San Jose, CA 95128

**Amy Pallas**  
apallas@prologis.com  
ph +1 510 661 4087  
cell +1 650 380 3129  
LIC #00935272  
3353 Gateway Boulevard  
Fremont, CA 94538

# ±7,251 SF



## Office/R&D Space For Lease



**Alan Guterman**  
alan.guterman@cushwake.com  
ph +1 408 615 3414  
cell +1 408 888 0881  
Lic #00884495  
300 Santana Row, Fifth Floor  
San Jose, CA 95128

**Jon DeCoite**  
jon.decoite@cushwake.com  
ph +1 408 615 3408  
cell +1 408 843 3499  
LIC #01471300  
300 Santana Row, Fifth Floor  
San Jose, CA 95128

**Kelly Yoder**  
kelly.yoder@cushwake.com  
ph +1 408 615 3427  
cell +1 408 439 6672  
LIC #01821117  
300 Santana Row, Fifth Floor  
San Jose, CA 95128

**Steve Horton**  
steve.horton@cushwake.com  
ph +1 408 615 3412  
cell +1 408 726 1010  
LIC #01127340  
300 Santana Row, Fifth Floor  
San Jose, CA 95128

**Amy Pallas**  
apallas@prologis.com  
ph +1 510 661 4087  
cell +1 650 380 3129  
LIC #00935272  
3353 Gateway Boulevard  
Fremont, CA 94538

# ±7,251 SF



## Office/R&D Space For Lease



**Alan Guterman**  
alan.guterman@cushwake.com  
ph +1 408 615 3414  
cell +1 408 888 0881  
Lic #00884495  
300 Santana Row, Fifth Floor  
San Jose, CA 95128

**Jon DeCoite**  
jon.decoite@cushwake.com  
ph +1 408 615 3408  
cell +1 408 843 3499  
LIC #01471300  
300 Santana Row, Fifth Floor  
San Jose, CA 95128

**Kelly Yoder**  
kelly.yoder@cushwake.com  
ph +1 408 615 3427  
cell +1 408 439 6672  
LIC #01821117  
300 Santana Row, Fifth Floor  
San Jose, CA 95128

**Steve Horton**  
steve.horton@cushwake.com  
ph +1 408 615 3412  
cell +1 408 726 1010  
LIC #01127340  
300 Santana Row, Fifth Floor  
San Jose, CA 95128

**Amy Pallas**  
apallas@prologis.com  
ph +1 510 661 4087  
cell +1 650 380 3129  
LIC #00935272  
3353 Gateway Boulevard  
Fremont, CA 94538