



NEW TO THE MARKET SUBLEASE
THE NATIONAL
125 S CLARK ST, CHICAGO, IL



FLOOR: 12th
RSF: 16,564 RSF
TERM: FLEXIBLE (10/31/2026 or 10/31/2029)
RATE: NEGOTIABLE
AVAILABLE: IMMEDIATELY

PROPERTY HIGHLIGHTS

- Landscaped outdoor terrace with seating and classic shuffleboard
- Tenant lounge complete with bar and pool table
- On-site marketplace, Revival, features Chicago's neighborhood restaurants in a grab-and-go setting and new concepts from several acclaimed chefs.
- Walking distance to Michigan Avenue and conveniently located close to the Monroe, Quincy and Jackson "L" stations, plus multiple bus stops and divvy stations nearby.

For more information,
please contact:

Josh Feldman
312.424.8091
josh.feldman@cushwake.com

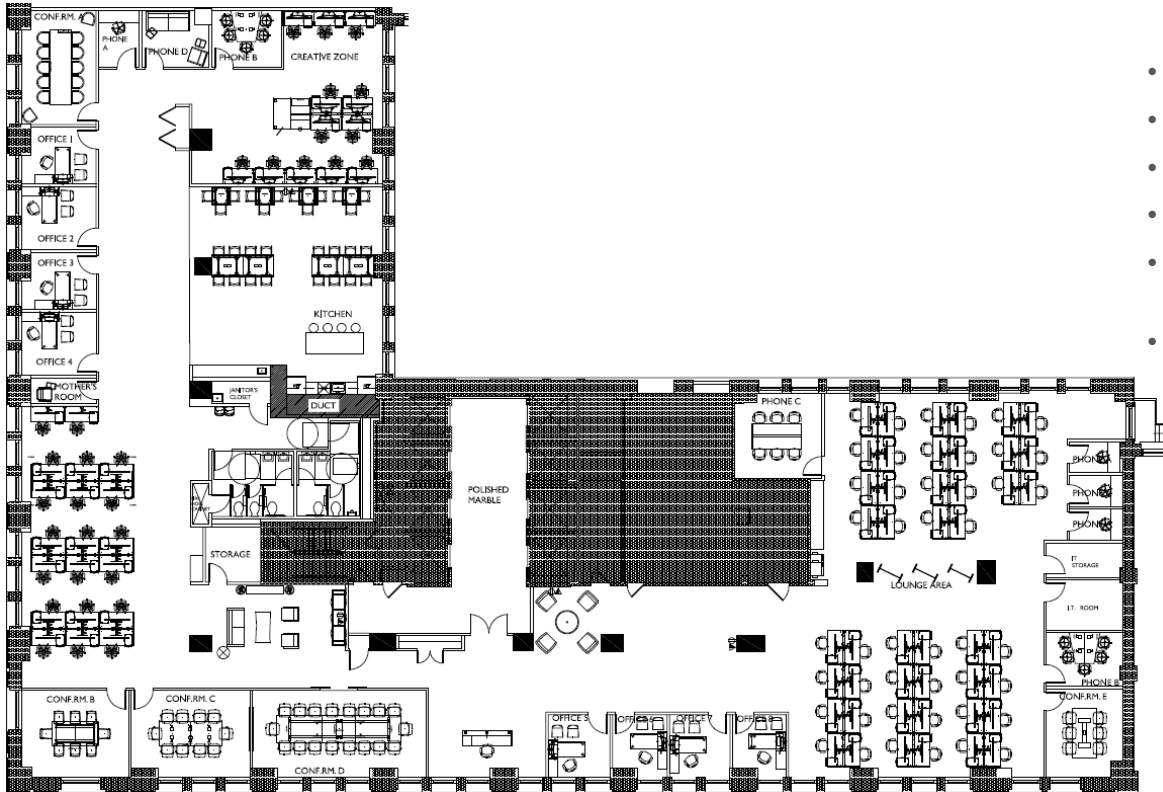
Christi Raichle
312.338.7044
christi.raichle@cushwake.com

225 W Wacker Dr, Suite 3000
Chicago, IL 60606



NEW TO THE MARKET SUBLEASE
THE NATIONAL
125 S CLARK ST, CHICAGO, IL

SPACE PLAN

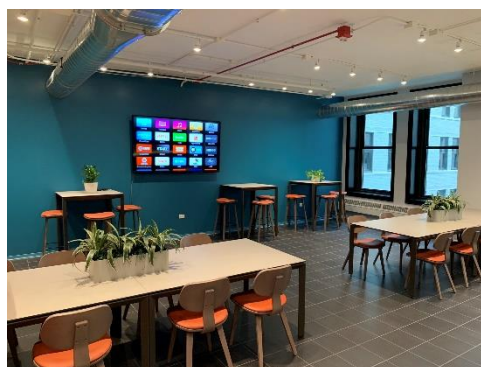
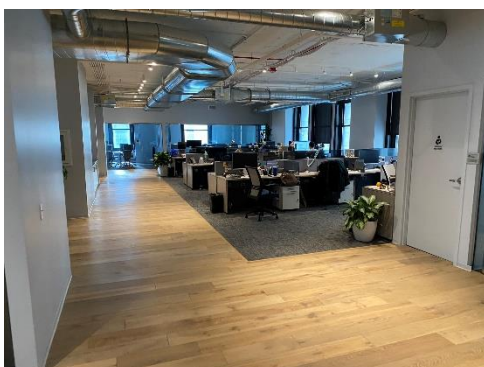
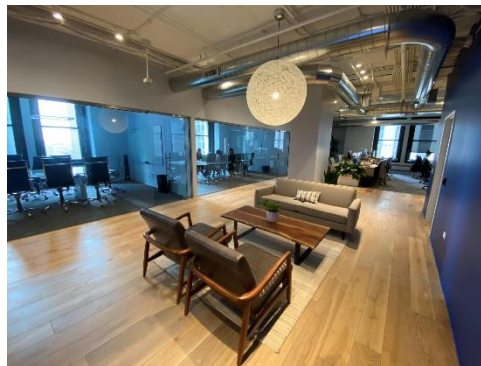
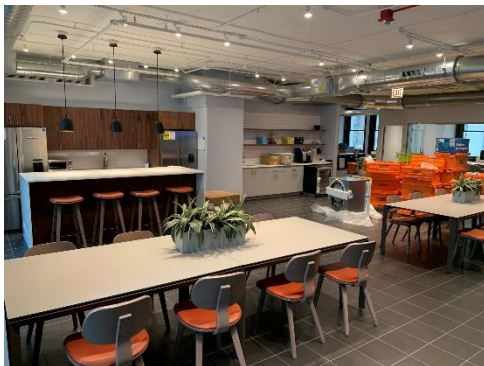


SPACE FEATURES

- Light court with window line on 5 sides
- 5 Conference Rooms
- 8 Offices
- 78 Workstations
- Expansive café/kitchen
- Multiple phone rooms throughout
- Furniture available.



PHOTOS



For more information, please contact:

Josh Feldman
312.424.8091
josh.feldman@cushwake.com

Christi Raichle
312.338.7044
christi.raichle@cushwake.com

225 W Wacker Dr, Suite 3000
Chicago, IL 60606

cushmanwakefield.com