

THREE-STORY GLASS ATRIUM LOBBY

LEASE AVAILABLE



224 CORPORATE CENTER

6400 SE Lake Rd
Portland, OR 97222

OFFICE AVAILABLE

14,174 SF

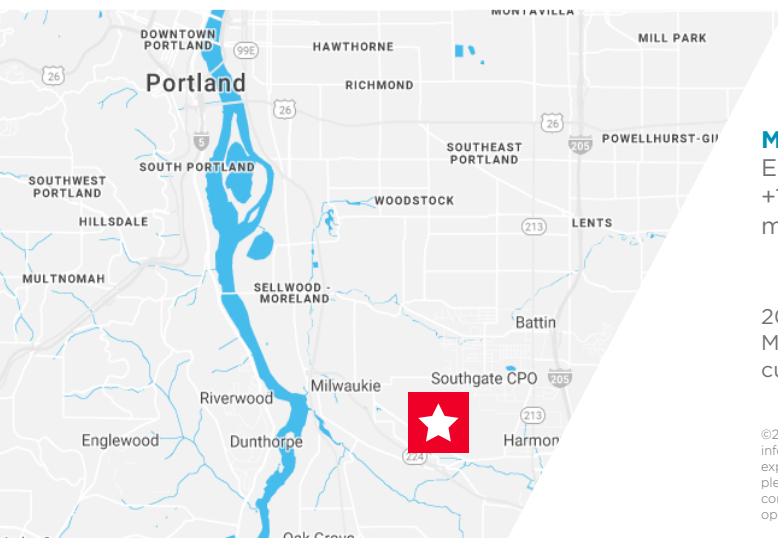
8,936 SF

3,270 SF

\$25.00 / RSF FS

PROPERTY HIGHLIGHTS

- Coffee house and deli located on-site
- Abundant natural light and open work-area opportunities
- Flexible floor plans and attractive full-service lease rates
- Shower facilities and storage lockers
- Building conference room
- Integrated access and state-of-the-art security system
- Building can use Milwaukie, Clackamas or Portland for address



MARK CARNESE

Executive Managing Director

+1 503 279 1764

mark.carnese@cushwake.com

200 SW Market St, Suite 200 | Portland, OR
Main +1 503 279 1700 | Fax +1 503 274 6512
cushmanwakefield.com

©2023 Cushman & Wakefield. All rights reserved. The information contained in this communication is strictly confidential. This information has been obtained from sources believed to be reliable but has not been verified. No warranty or representation, express or implied, is made as to the condition of the property (or properties) referenced herein or as to the accuracy or completeness of the information contained herein, and same is submitted subject to errors, omissions, change of price, rental or other conditions, withdrawal without notice, and to any special listing conditions imposed by the property owner(s). Any projections, opinions or estimates are subject to uncertainty and do not signify current or future property performance.

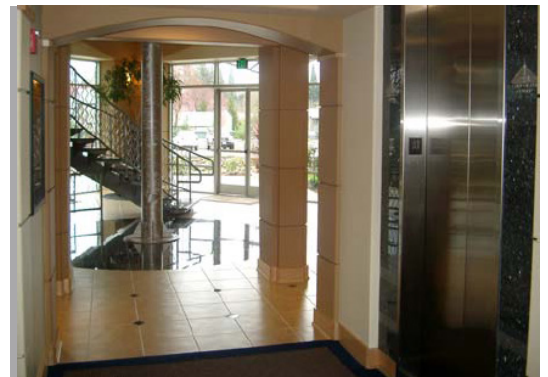
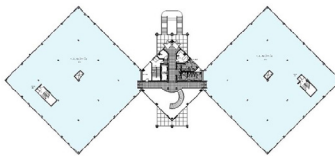


224 CORPORATE CENTER

6400 SE Lake Road, Portland, OR 97222

26,380 SF CLASS A OFFICE

PROPERTY PHOTOS



MARK CARNESE

Executive Managing Director
+1 503 279 1764
mark.carnese@cushwake.com

200 SW Market St, Suite 200 | Portland, OR
Main +1 503 279 1700 | Fax +1 503 274 6512
cushmanwakefield.com

224 CORPORATE CENTER

6400 SE Lake Road, Portland, OR 97222

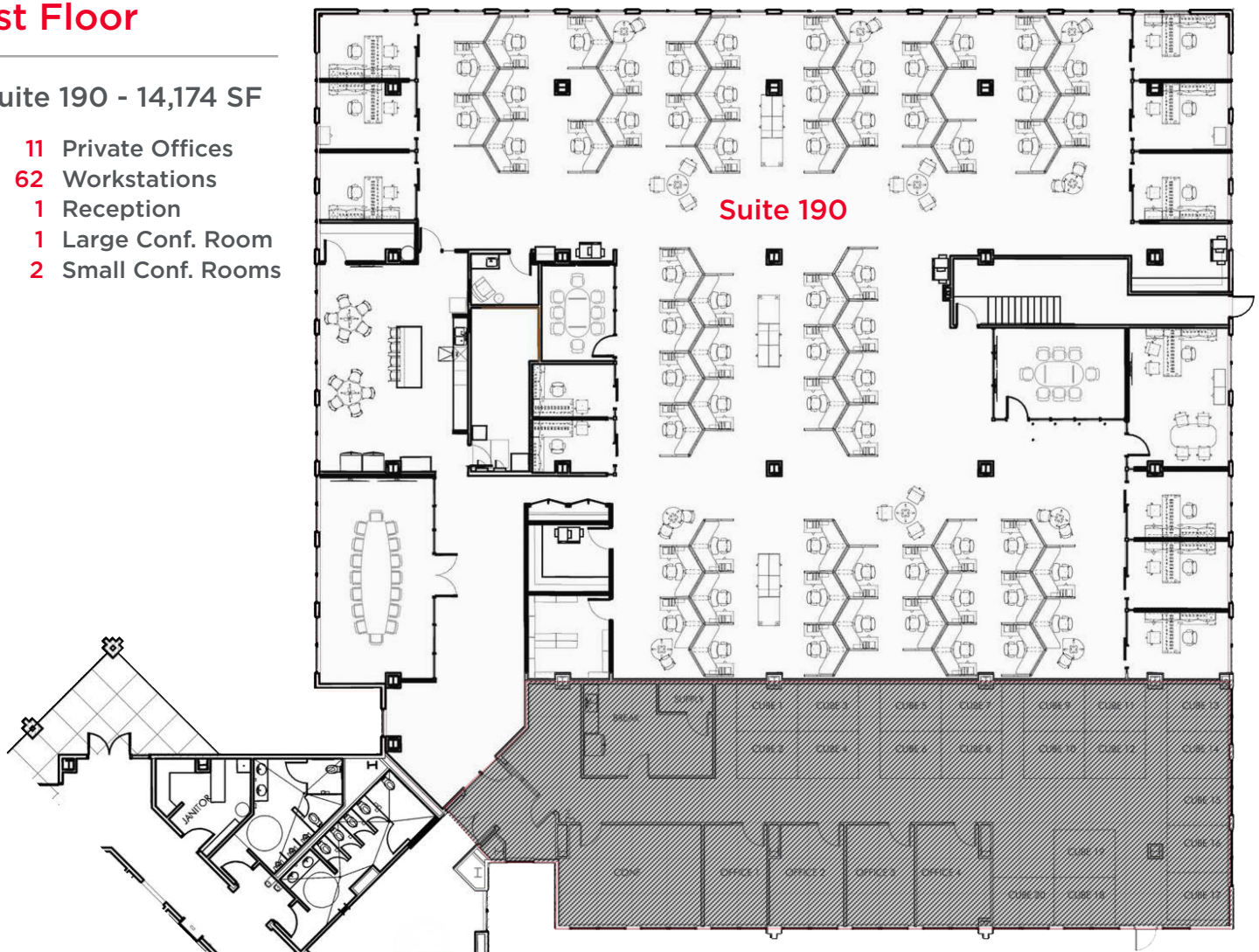
26,380 SF CLASS A OFFICE

FLOORPLAN

1st Floor

Suite 190 - 14,174 SF

- 11 Private Offices
- 62 Workstations
- 1 Reception
- 1 Large Conf. Room
- 2 Small Conf. Rooms



MARK CARNESE

Executive Managing Director
+1 503 279 1764
mark.carnese@cushwake.com

200 SW Market St, Suite 200 | Portland, OR
Main +1 503 279 1700 | Fax +1 503 274 6512
cushmanwakefield.com

224 CORPORATE CENTER

6400 SE Lake Road, Portland, OR 97222

26,380 SF CLASS A OFFICE

FLOORPLAN

2nd Floor

Suite 200 - 8,936 SF

- 28 Private Offices
- 1 Reception
- 2 Large Conf. Rooms
- 2 Small Conf. Rooms



MARK CARNESE

Executive Managing Director
+1 503 279 1764
mark.carnese@cushwake.com

200 SW Market St, Suite 200 | Portland, OR
Main +1 503 279 1700 | Fax +1 503 274 6512
cushmanwakefield.com

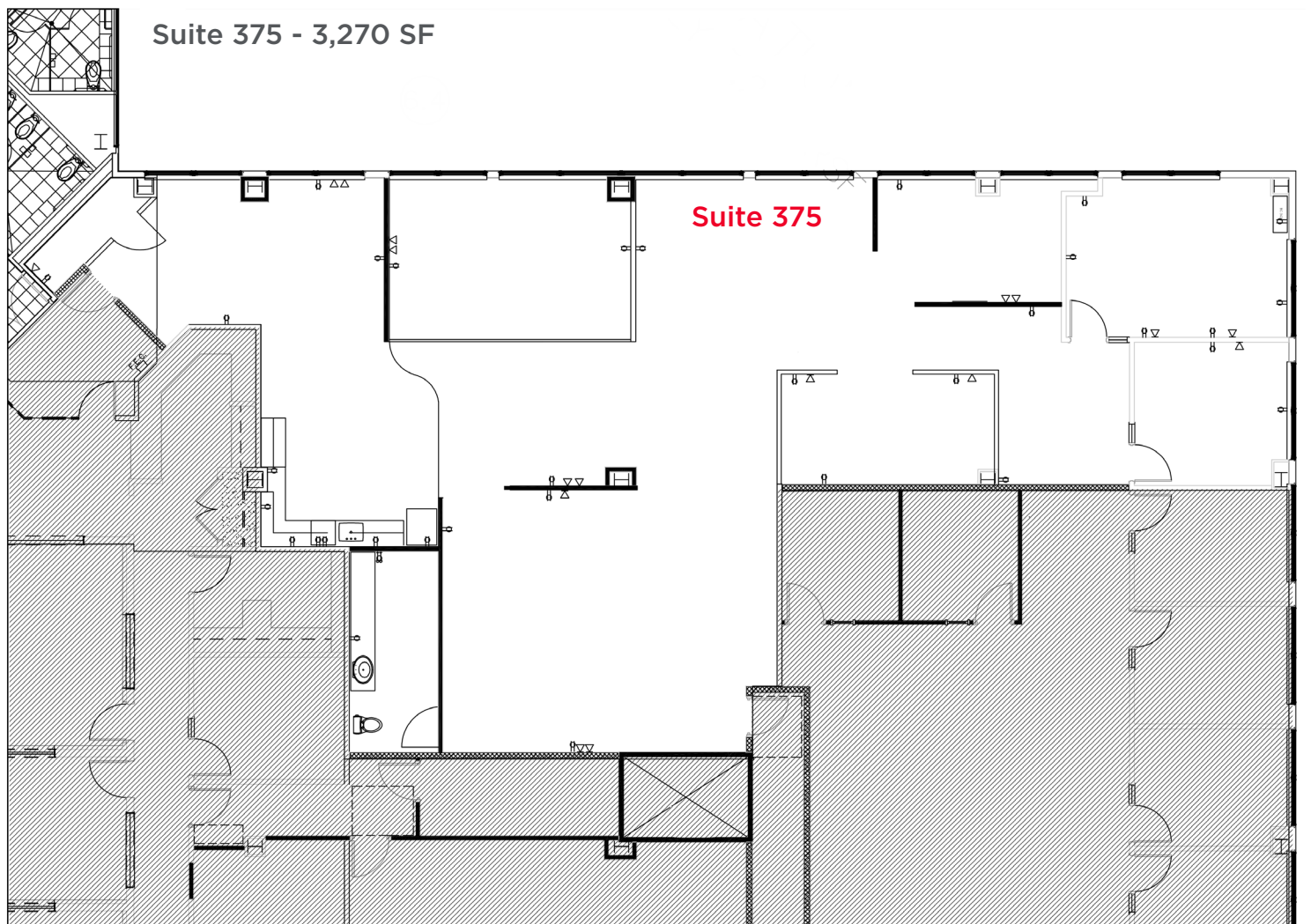
224 CORPORATE CENTER

6400 SE Lake Road, Portland, OR 97222

26,380 SF CLASS A OFFICE

FLOORPLAN

3rd Floor



MARK CARNESE

Executive Managing Director
+1 503 279 1764
mark.carnese@cushwake.com

200 SW Market St, Suite 200 | Portland, OR
Main +1 503 279 1700 | Fax +1 503 274 6512
cushmanwakefield.com