

80-90 TIVERTON COURT

Markham, Ontario

 CUSHMAN &
WAKEFIELD



AVAILABLE SPACE

80 Tiverton Court

- 101 - 4,453 SF
- 200 - 2,243 SF
- 205 - 3,605 SF
- 601 - 5,521 SF
- 701 - 7,893 SF
- 702 - 1,802 SF
- ~~803A - LEASED~~

Asking Rent: \$16.00



Newly Renovated Lobby



Fitness Centre with Squash Court

90 Tiverton Court

Unit 100: 5,624 SF

Additional Rent: \$12.75

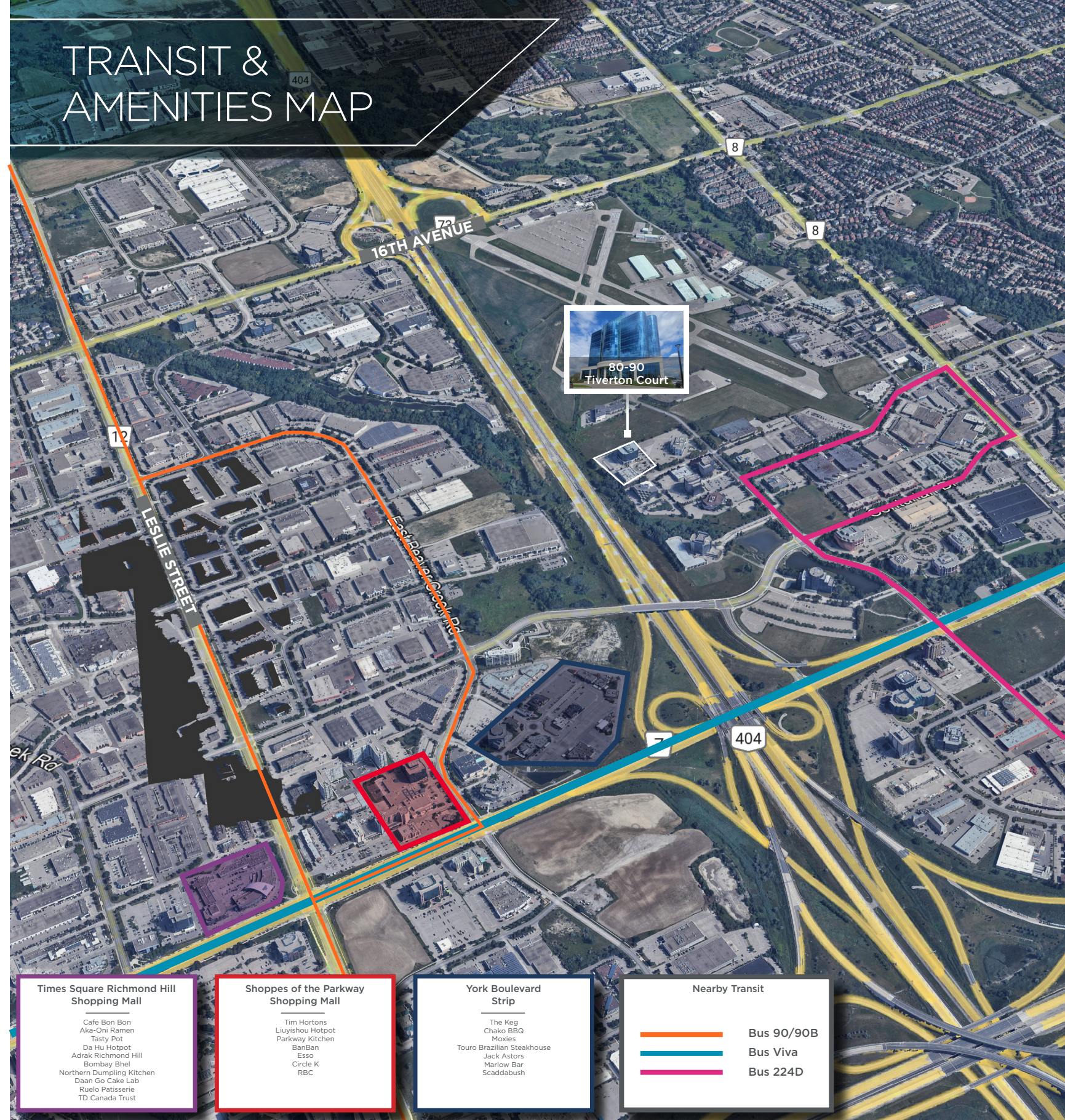


Food Service Provider Onsite



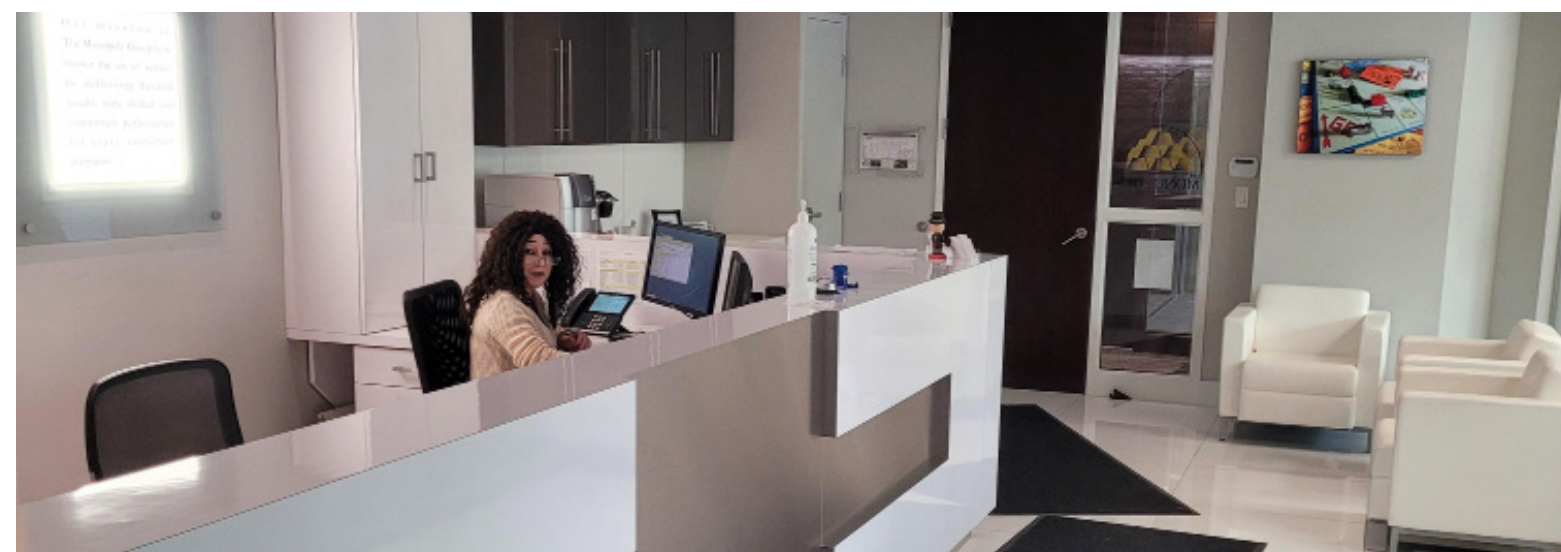
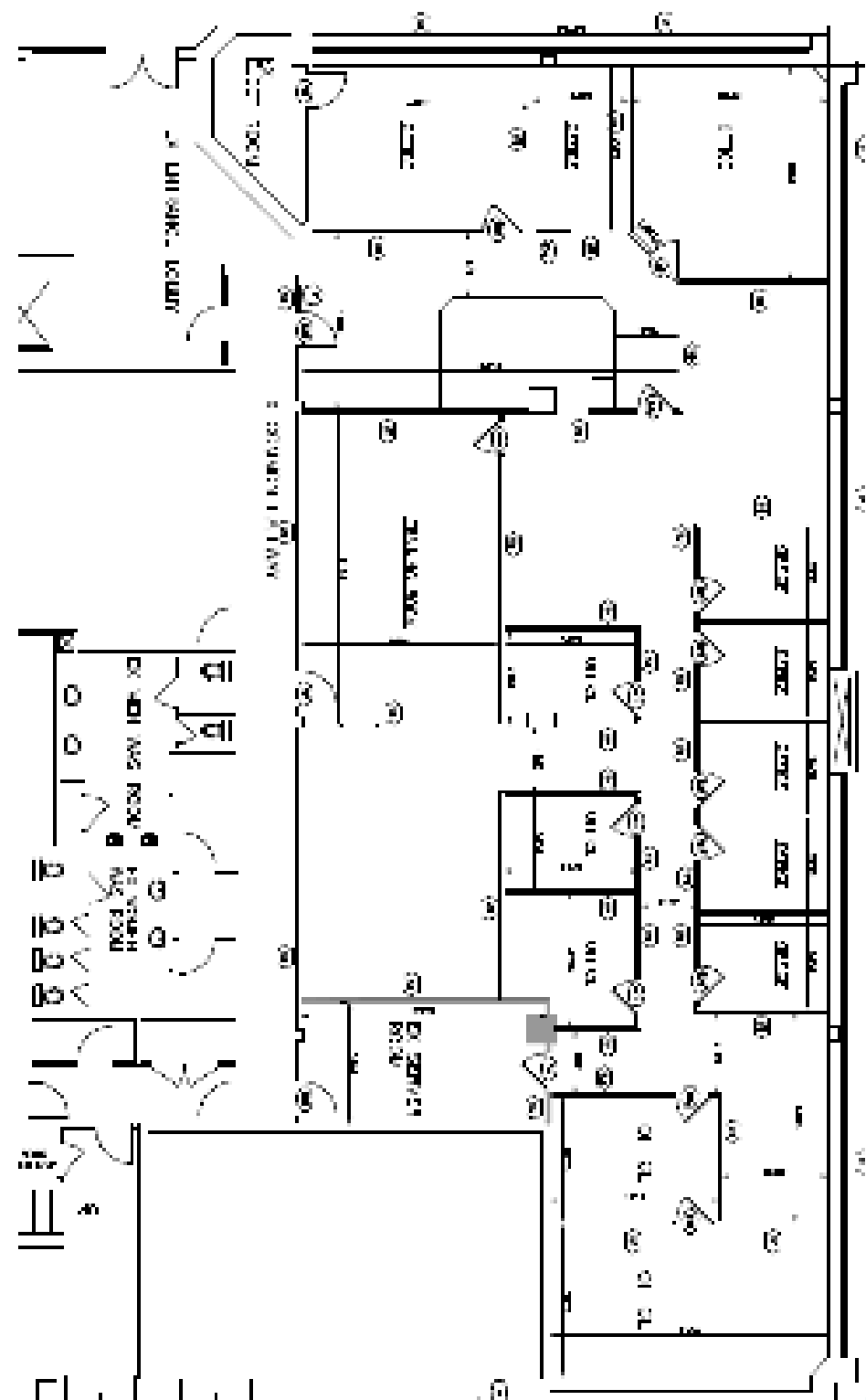
Parking 4:1,000 SF
Underground Parking Available

TRANSIT & AMENITIES MAP





Suite 100: 5,624 SF



80-90 Tiverton Court

Markham, Ontario



For more information please contact:

DAVID STEVENS*

Vice President

D: 416-756-5420

M: 647-210-3106

David.Stevens@cushwake.com

ZARKO STOJANOVIC*

Vice President

D: 416-756-5440

M: 416-219-0716

Zarko.Stojanovic@cushwake.com

CUSHMAN & WAKEFIELD ULC

3100 Steeles Avenue East

Markham, Ontario L3R 8T3 | Canada

www.cushmanwakefield.com

©2024 Cushman & Wakefield ULC, Brokerage. All rights reserved. The information contained in this communication is strictly confidential. This information has been obtained from sources believed to be reliable but has not been verified. NO WARRANTY OR REPRESENTATION, EXPRESS OR IMPLIED, IS MADE AS TO THE CONDITION OF THE PROPERTY (OR PROPERTIES) REFERENCED HEREIN OR AS TO THE ACCURACY OR COMPLETENESS OF THE INFORMATION CONTAINED HEREIN, AND SAME IS SUBMITTED SUBJECT TO ERRORS, OMISSIONS, CHANGE OF PRICE, RENTAL OR OTHER CONDITIONS, WITHDRAWAL WITHOUT NOTICE, AND TO ANY SPECIAL LISTING CONDITIONS IMPOSED BY THE PROPERTY OWNER(S). ANY PROJECTIONS, OPINIONS OR ESTIMATES ARE SUBJECT TO UNCERTAINTY AND DO NOT SIGNIFY CURRENT OR FUTURE PROPERTY PERFORMANCE. *Sales Representative **Broker