

**10,750 SF AVAILABLE FOR LEASE**

# **125 INDUSTRIAL PARKWAY**

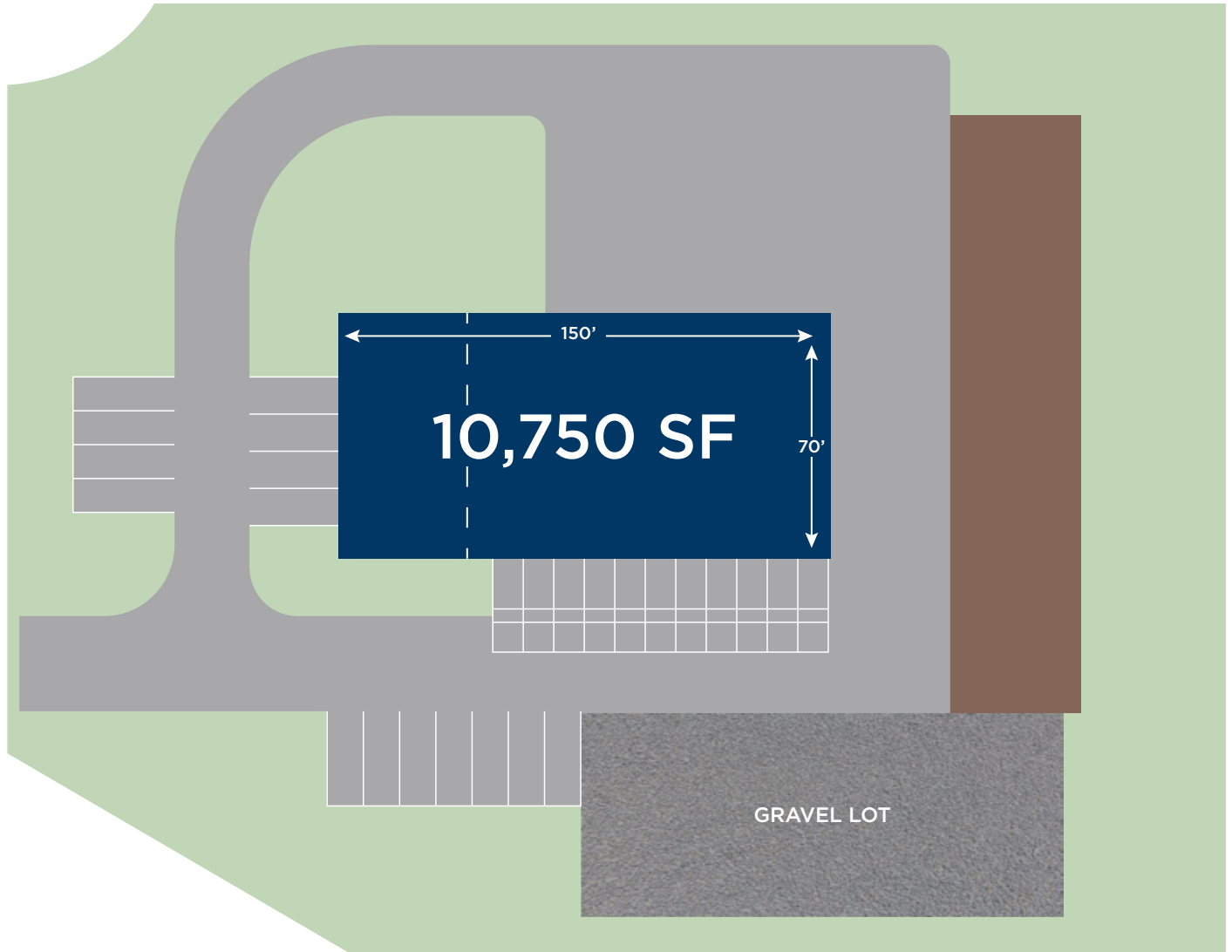
POTTSTOWN, PA 19464

**Jonas L. Skovdal**  
Executive Managing Director  
610 772 2005  
[jonas.skovdal@cushwake.com](mailto:jonas.skovdal@cushwake.com)

**Gerry Blinebury**  
Executive Vice Chair  
267 303 0751  
[gerry.blinebury@cushwake.com](mailto:gerry.blinebury@cushwake.com)

**Christopher Butera**  
Director  
215 963 4011  
[chris.butera@cushwake.com](mailto:chris.butera@cushwake.com)

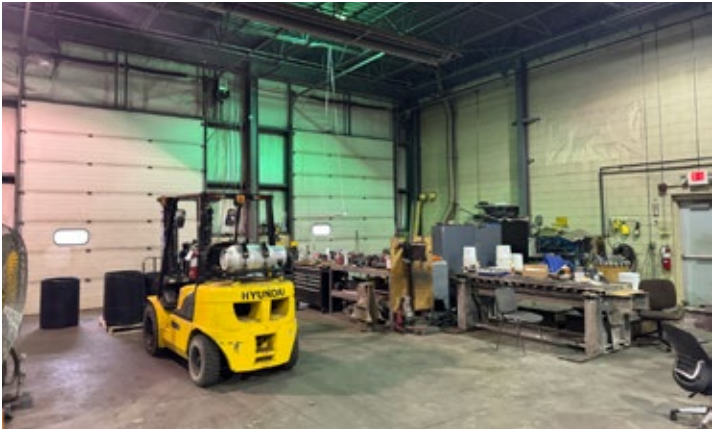
# SITE SPECIFICATIONS



## SPECS

Available SF:	10,750 SF	Year Built:	2000
Building SF:	10,750 SF	Clear Height:	20'
Office SF:	±2,400 SF	Loading:	10 Drive-In Doors
Dimensions:	150' x 70'	Outdoor Storage Area:	Approximately 1 Acre
Lot Size:	3.94 Acres	Zoning:	Office Light Industrial

# PROPERTY PHOTOS



# LOCAL ACCESS



1.1 Miles to  
US-422 W Ramp



1.3 Miles to  
US-422 E Ramp

# REGIONAL MAP



**Jonas L. Skovdal**  
Executive Managing Director  
610 772 2005  
[jonas.skovdal@cushwake.com](mailto:jonas.skovdal@cushwake.com)

**Gerry Blinebury**  
Executive Vice Chair  
267 303 0751  
[gerry.blinebury@cushwake.com](mailto:gerry.blinebury@cushwake.com)

**Christopher Butera**  
Director  
215 963 4011  
[chris.butera@cushwake.com](mailto:chris.butera@cushwake.com)

