



MEDICAL OFFICE SPACE

MEDICAL OFFICE SPACE

Property Highlights

- St. Mark's Hospital Surgery Center on main level
- Suite #200: 11,266 RSF
- Suite #360: 3,030 RSF
- Lease Rate: \$18.00, NNN
- Abundant covered parking available
- Park-like setting with stream
- New common area
- Class A medical
- Available immediately
- *See reverse for floor plans*



Ralph Riedel, ccim
Executive Director
+1 801 303 5466
ralph.riedel@cushwake.com

170 South Main Street, Suite 1600
Salt Lake City, UT 84101
Main +1 801 322 2000
Fax +1 801 322 2040
cushmanwakefield.com



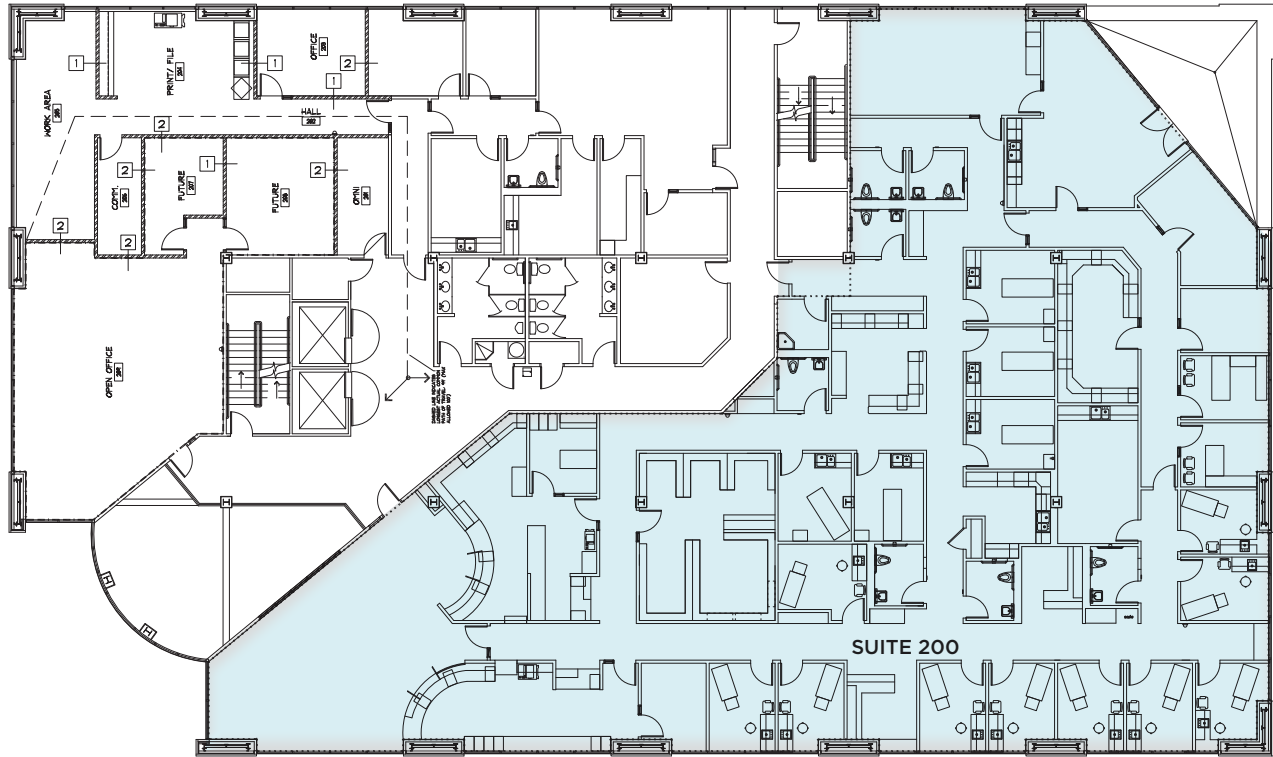
**CUSHMAN &
WAKEFIELD**

FOR LEASE

Professional Medical Office Bldg

348 East 4500 South / Salt Lake City, UT 84107

SUITE 200: 11,266 RSF



SUITE 360: 3,030 RSF

