



2360-2390 BERING DRIVE

SAN JOSE | CALIFORNIA



±7,095 - ±20,783 SF FOR LEASE



CUSHMAN & WAKEFIELD

2390 BERING DRIVE

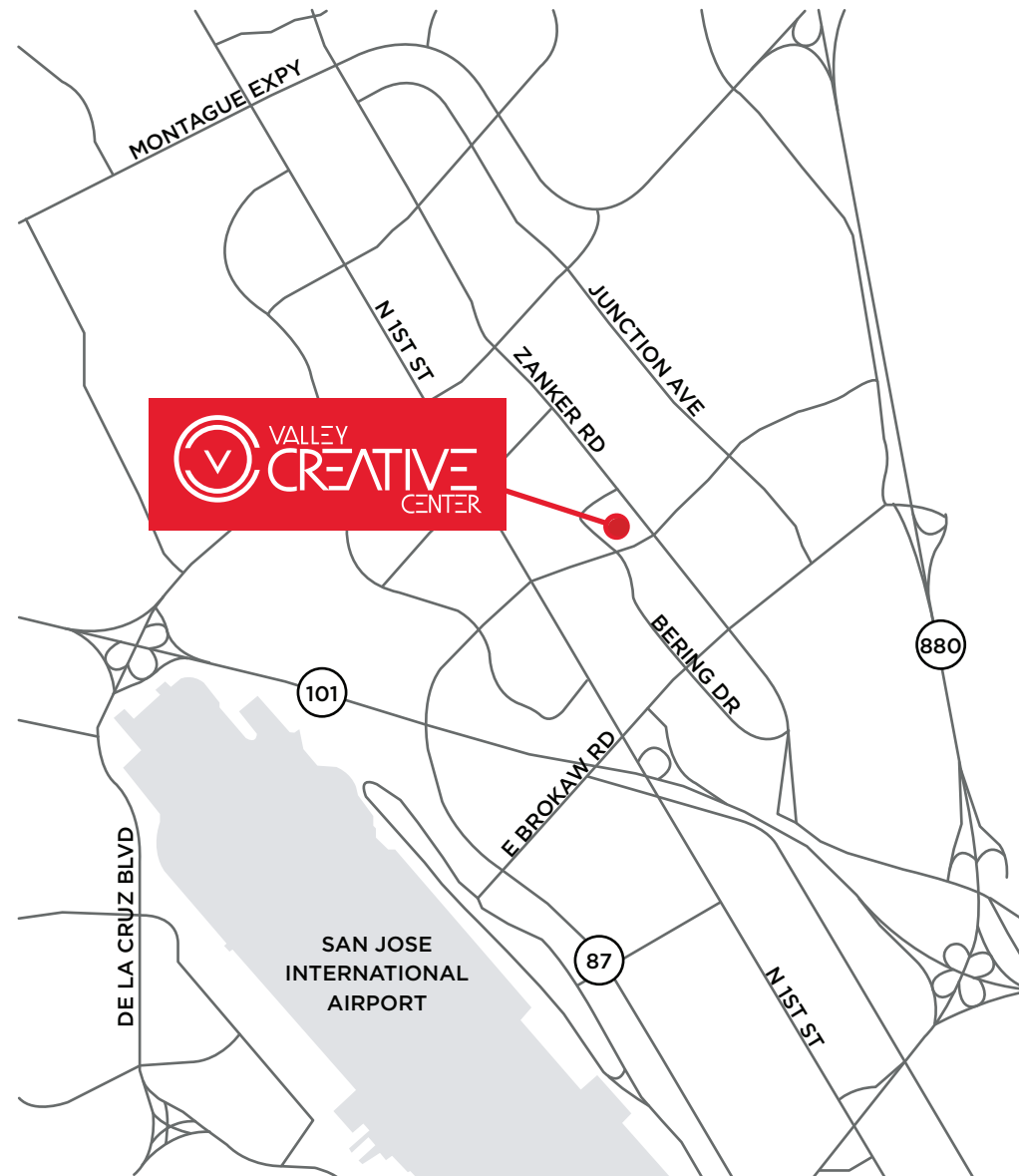
±7,684 SF

2360 & 2370 BERING DRIVE

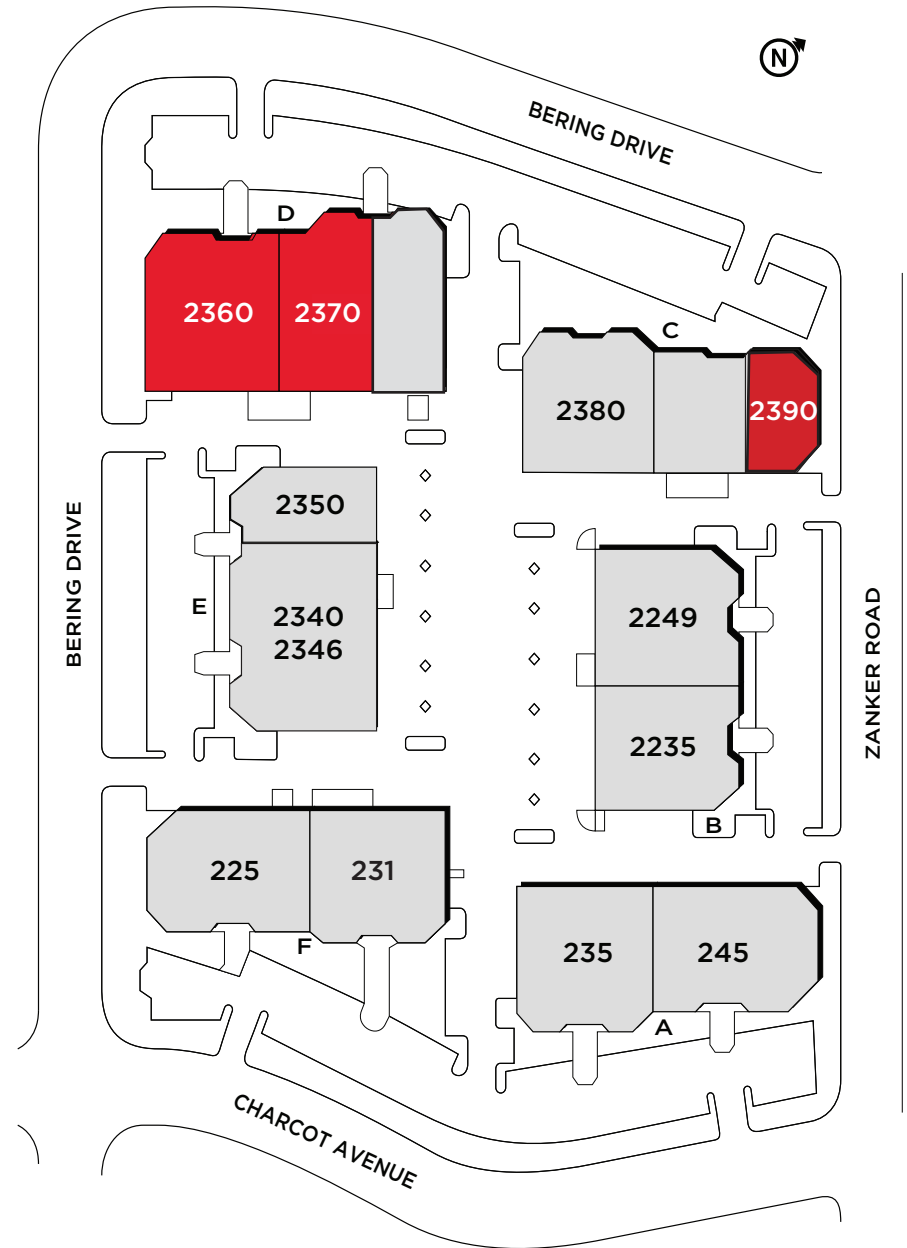
±20,783 SF (Divisible to ±7,095 SF & ±13,688 SF)

HIGHLIGHTS

- Single Story R&D Building with New Building Façade
- Market Ready, Move in Ready Interior
- ±15-15.5 Foot Clear Height
- Open Office with Lab and Warehouse
- ±3.63/1,000 Parking
- Grade Level and Dock Loading
- Monument Signage Available
- On-site Expansion from ±7,095-166,928 SF



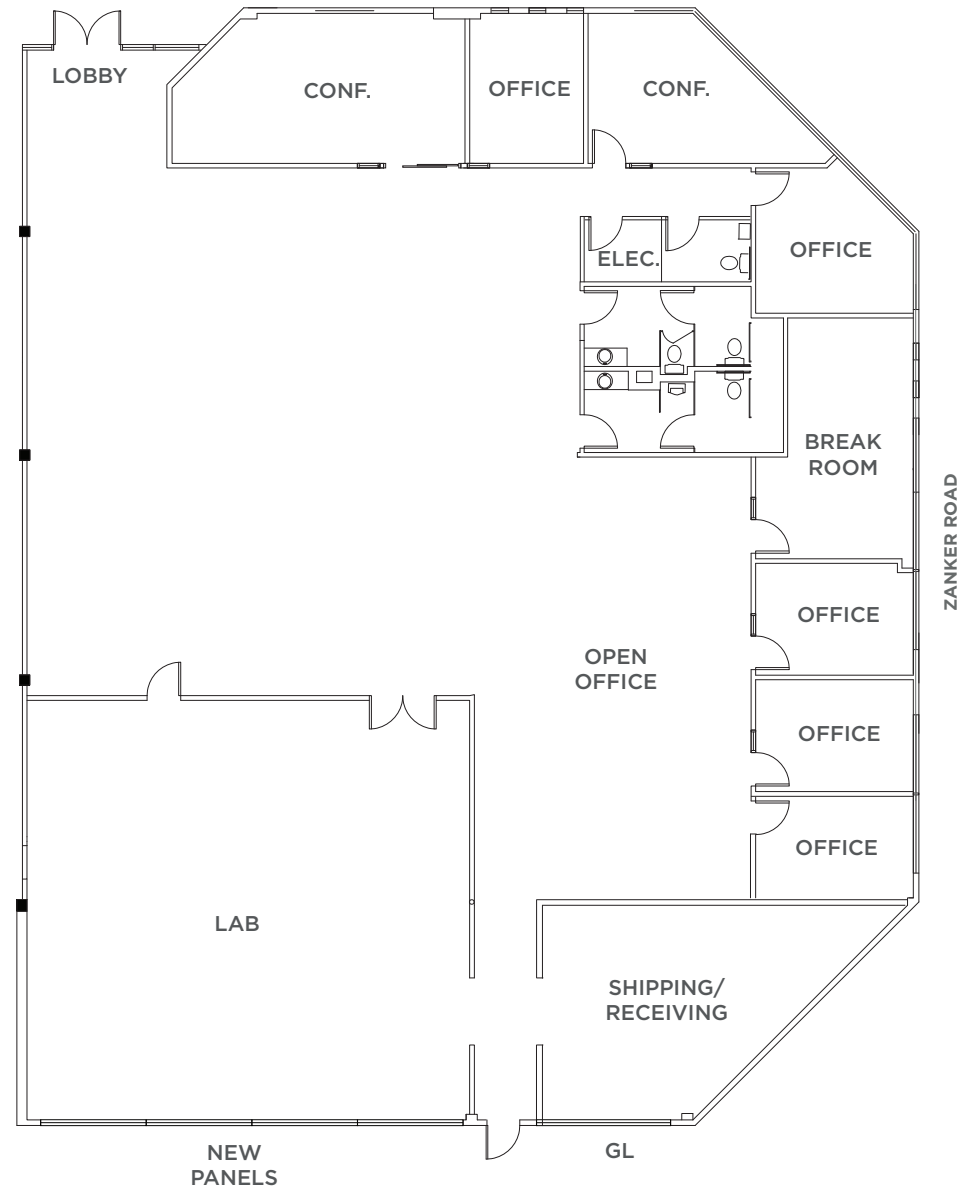
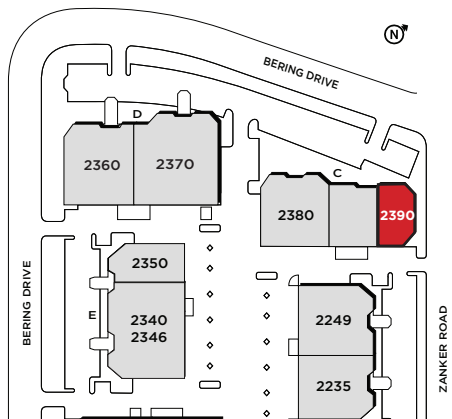
SITE PLAN



2390 BERING DRIVE

±7,684 SF

- 5 Offices
- 2 Conference Rooms
- Shipping/Receiving
- Lab
- Break Room
- Grade Level Loading
- Power: 200 Amps @ 480V



2360 & 2370 BERING DRIVE

±20,783 SF Divisible to:

2360 BERING DRIVE

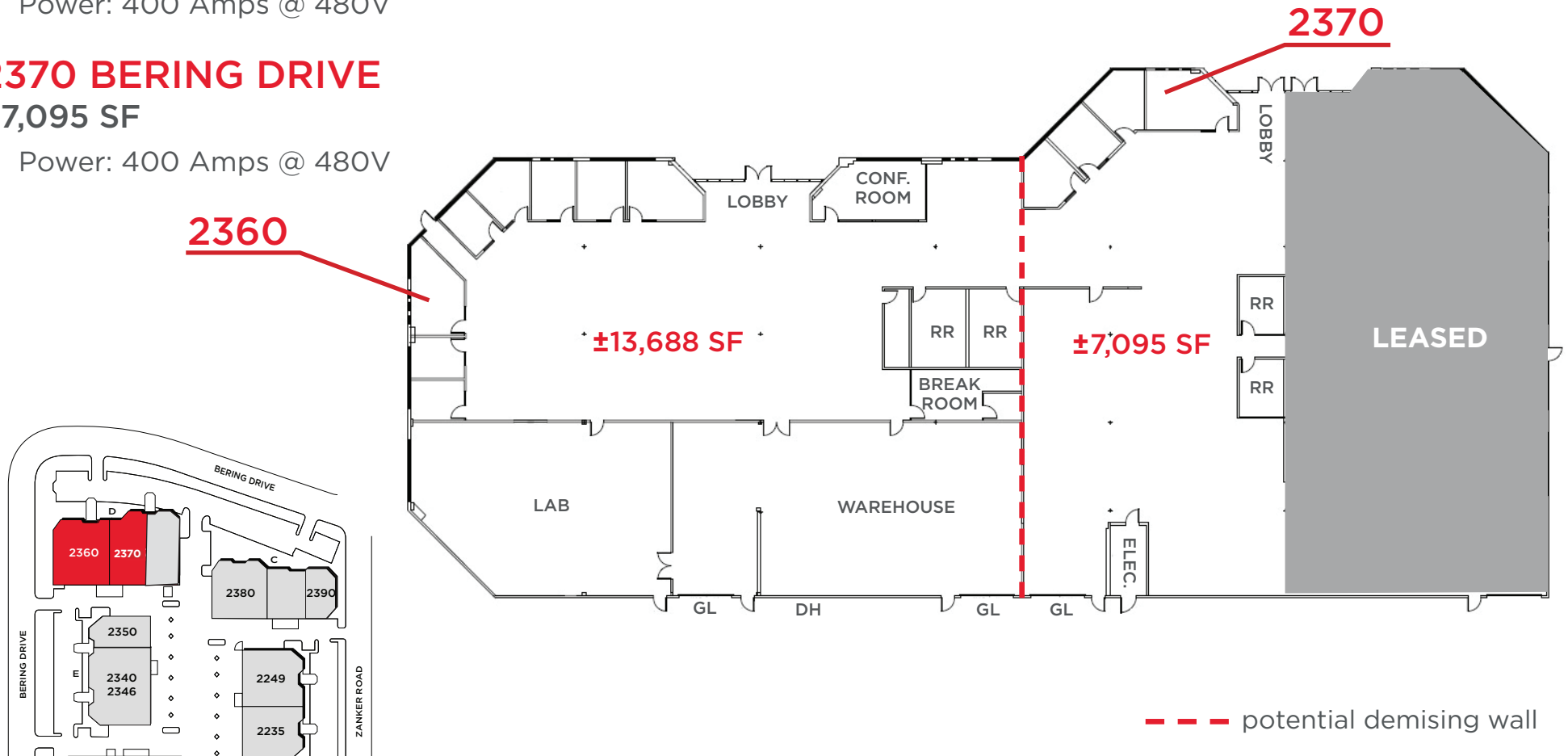
±13,688 SF

- Power: 400 Amps @ 480V

2370 BERING DRIVE

±7,095 SF

- Power: 400 Amps @ 480V

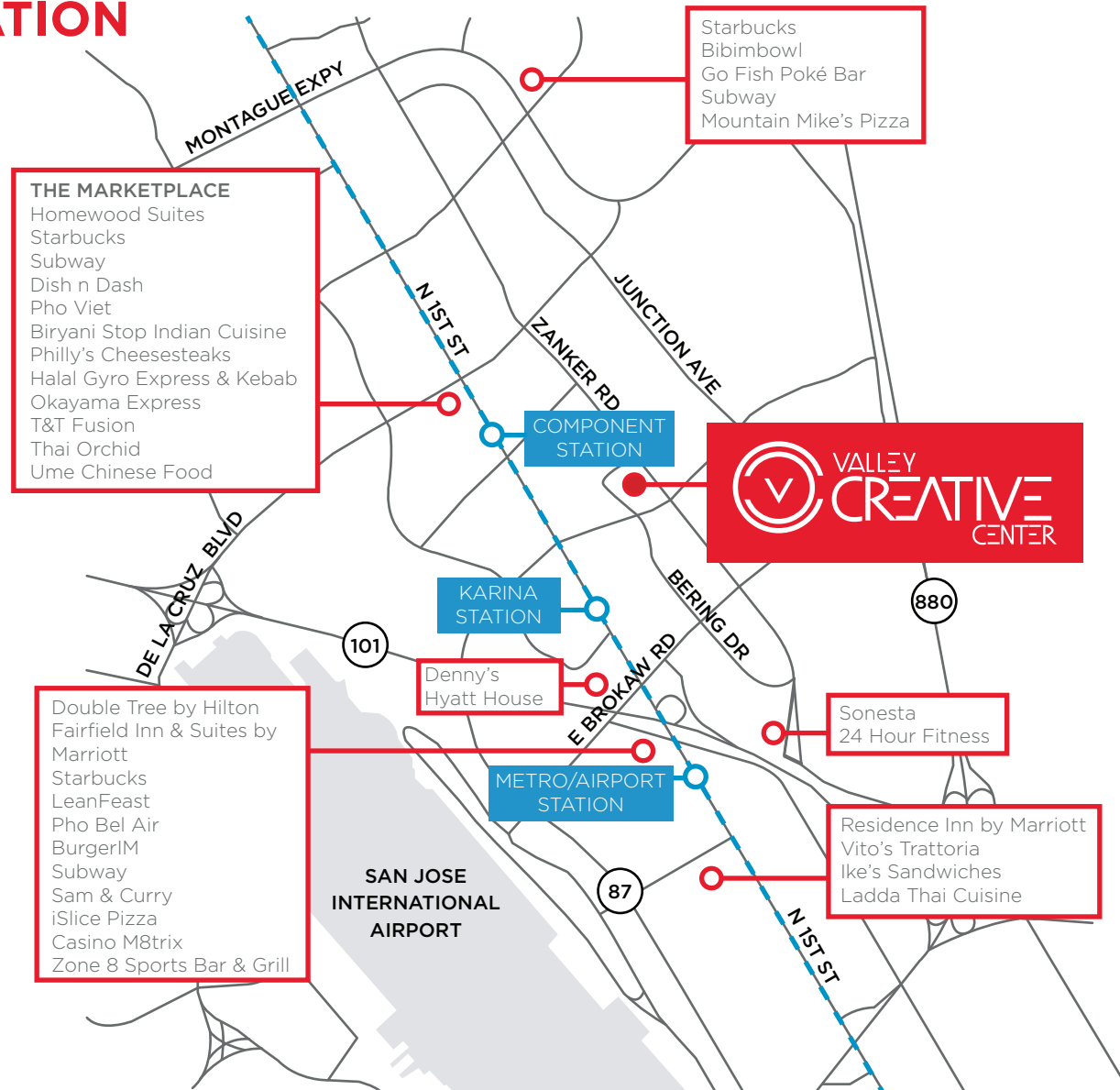


--- potential demising wall

AMENITIES & TRANSPORTATION

14 MINUTE WALK TO
COMPONENT FROM VALLEY
CREATIVE CENTER

8 MINUTE RIDE TO BAYPOINTE
STATION VIA VTA LIGHT RAIL
BLUE LINE





2390 BERING DRIVE

±7,683 SF

2360 & 2370 BERING DRIVE

±20,783 SF (Divisible to ±7,095 SF & ±13,688 SF)

Jon DeCoite

+1 408 615 3408

jon.decoite@cushwake.com

LIC #01471300

Alan Guterman

+1 408 615 3414

alan.guterman@cushwake.com

LIC #00884495

Steve Horton

+1 408 615 3412

steve.horton@cushwake.com

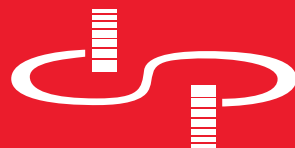
LIC #01127340

Kelly Yoder

+1 408 615 3427

kelly.yoder@cushwake.com

LIC #01821117



DOLLINGER PROPERTIES



**CUSHMAN &
WAKEFIELD**