



**CUSHMAN &
WAKEFIELD**

Lease Expiration: 8/31/2026

FOR SUBLEASE

**13160 FOSTER STREET
OVERLAND PARK, KS**

SOUTHCREEK CORPORATE CENTER II

14,202 SF LAB & OFFICE SUBLEASE AVAILABLE

±4,360 SF OF LAB SPACE

±9,842 SF OF OFFICE SPACE

4600 Madison Avenue, Suite 800
Kansas City, MO 64112
Main +1 816 2210 2200
Fax +1 913 273 1398
cushmanwakefield.com

FOR SUBLEASE

Southcreek Corporate Center II

13160 Foster Street, Overland Park, KS



Property Highlights

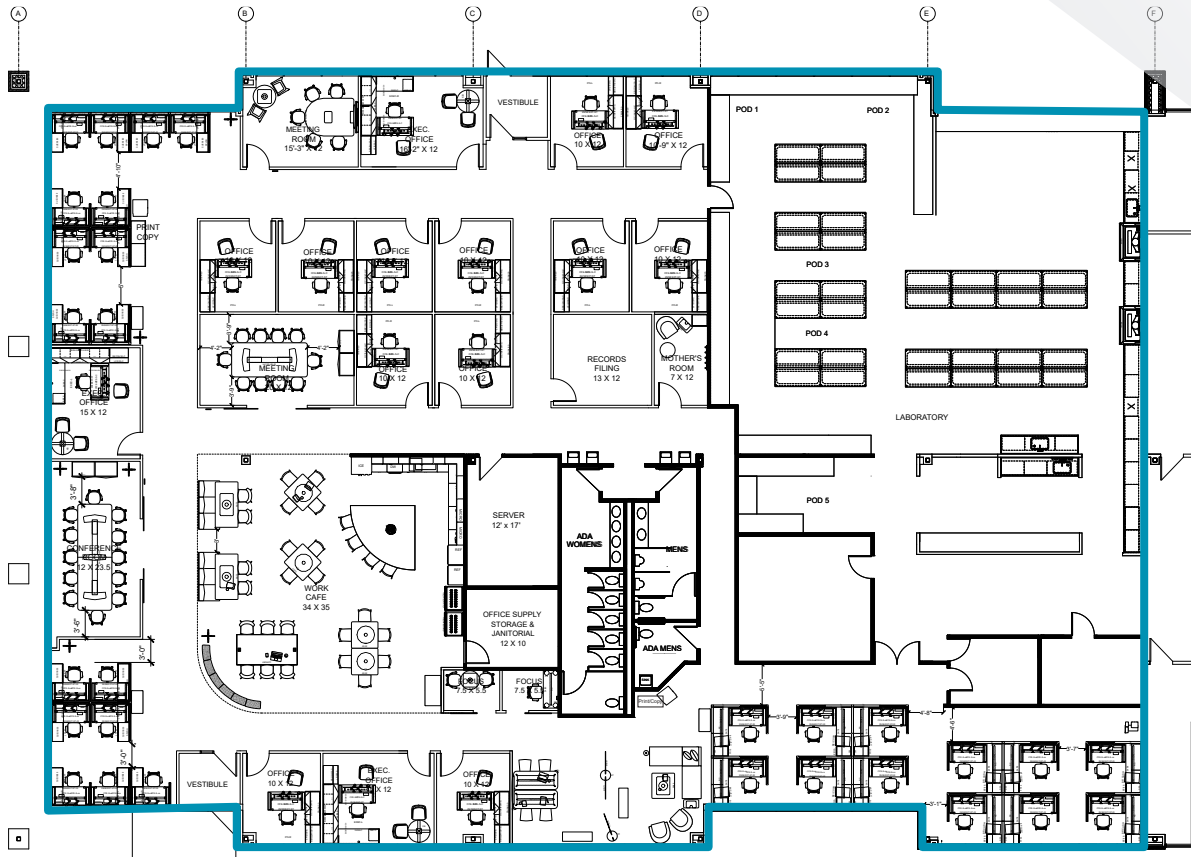
- Furnished Lab and Office Space available
- Like new finishes throughout
- Lab equipment can be made available
- Furniture negotiable
- Located in close proximity to 135th and Highway 69
- Access to various restaurants and retail amenities along the 135th Street corridor
- Single story building with drive up convenience
- Parking Ratio: 4.5/1,000

Contact

ANDREW GREENE
Director
+1 816 216 5654
andrew.greene@cushwake.com

4600 Madison Avenue, Suite 800
Kansas City, MO 64112
Main +1 816 221 2200
Fax +1 913 273 1398

Floor Plan



Office space consists of:

- 15 offices (all steel, demountable wall system with magnetic walls)
- 29 cubicles of varying heights (17' mid and 12' tall cube heights)
- 1 large conference room
- 2 meeting rooms
 - » Conference and meeting Rooms have privacy film
- 2 focus Rooms and 2 meeting desks
- Large break room café and supply closet
- Small coffee bar
- Large server room with supplemental HVAC
- 2 print/copy stations
- Records/file room
- Wellness room
- In-suite restrooms

Lab space consists of:

- 2 hoods and supplemental drop down
- Chemical room with blower/exhaust system
- Sources of purified water (AquaSolutions System)
- Movable equipment
- Vinyl floor
- Supplemental HVAC to serve the Lab
- Fixed wall cabinets
- Refrigerators and heaters
- Glassware washer and glassware storage
- Environmental control room
- Chip tank
- Hazardous waste room
- Generator (35kw?) in-place to serve the Lab

**Subject to Change*

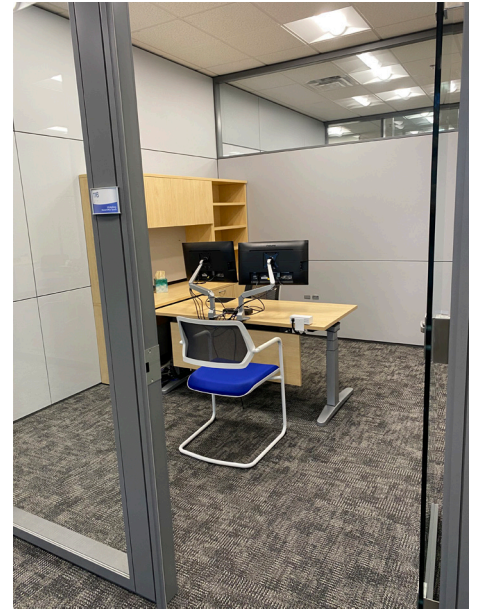
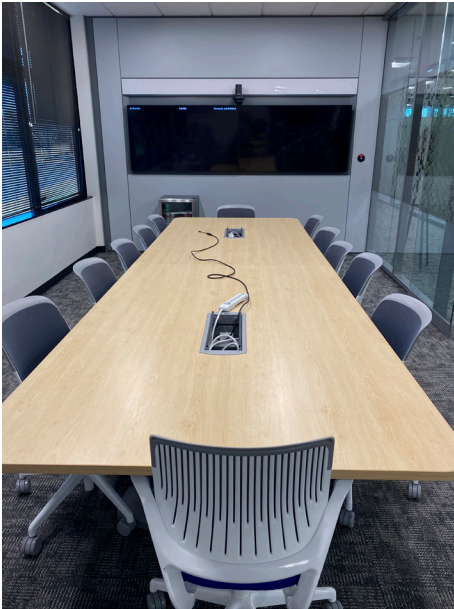
*Desks are sit/stand throughout

*White noise system in place

*New LED lights to turn on with motion

*Outdoor security camera system

FOR SUBLEASE
13160 Foster Street, Overland Park, KS



Location Aerial



Contact

ANDREW GREENE
Director
+1 816 216 5654
andrew.greene@cushwake.com

4600 Madison Avenue, Suite 800
Kansas City, MO 64112
Main +1 816 221 2200
Fax +1 913 273 1398

DISCLAIMER

©2024 Cushman & Wakefield. All rights reserved. This information has been obtained from sources believed to be reliable but has not been verified. NO WARRANTY OR REPRESENTATION, EXPRESS OR IMPLIED, IS MADE AS TO THE CONDITION OF THE PROPERTY (OR PROPERTIES) REFERENCED HEREIN OR AS TO THE ACCURACY OR COMPLETENESS OF THE INFORMATION CONTAINED HEREIN, AND SAME IS SUBMITTED SUBJECT TO ERRORS, OMISSIONS, CHANGE OF PRICE, RENTAL OR OTHER CONDITIONS, WITHDRAWAL WITHOUT NOTICE, AND TO ANY SPECIAL LISTING CONDITIONS IMPOSED BY THE PROPERTY OWNER(S). ANY PROJECTIONS, OPINIONS OR ESTIMATES ARE SUBJECT TO UNCERTAINTY AND DO NOT SIGNIFY CURRENT OR FUTURE PROPERTY PERFORMANCE.