



FOR LEASE

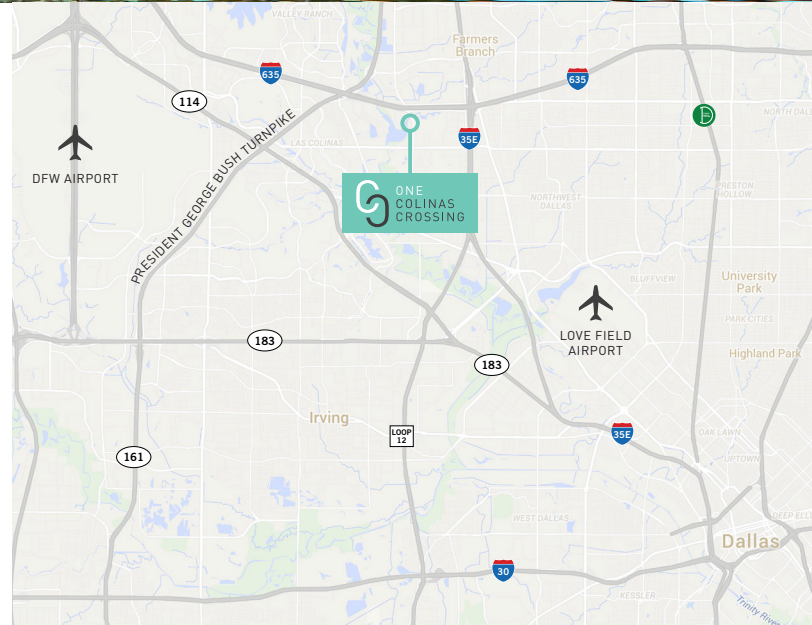
ONE COLINAS CROSSING

11701 Luna Rd. / Farmers Branch, TX



PROPERTY HIGHLIGHTS

- 11+ Acre Lakefront Campus
- Walking access to Hilton Double Tree and Omni Hotel
- Jogging Trails and Basketball Court
- Convenient Access to Major Highways 635, 161, 114, & I-35



JOHN FANCHER
972 910 9360
john.fancher@cushwake.com

MATT SCHENDLE
972 663 9634
matt.schendle@cushwake.com



BUILDING HIGHLIGHTS

- Address: 11701 Luna Road, Farmers Branch, TX 75234
- Building Size: 181,961 SF Class A Office
- Offering: 4th Floor for 31,724 SF
- Year Built: 1999. Renovated 2015/2016
- Parking: 4/1,000 SF Total, Including 1/1,000 Reserved Covered
- Power: Dual Feed From 2 Separate Substations
- Signage: Monument Panel Available
- Onsite Amenities:
 - 15,000 SF Shared Executive Meeting Space
 - State of the Art Audio/Visual and Teleconferencing Facilities
 - New Fitness Center with Showers and Lockers
 - Living Room Lounge in Lobby
 - Outdoor Courtyard with Lake Views



JOHN FANCHER

972 910 9360

john.fancher@cushwake.com

MATT SCHENDLE

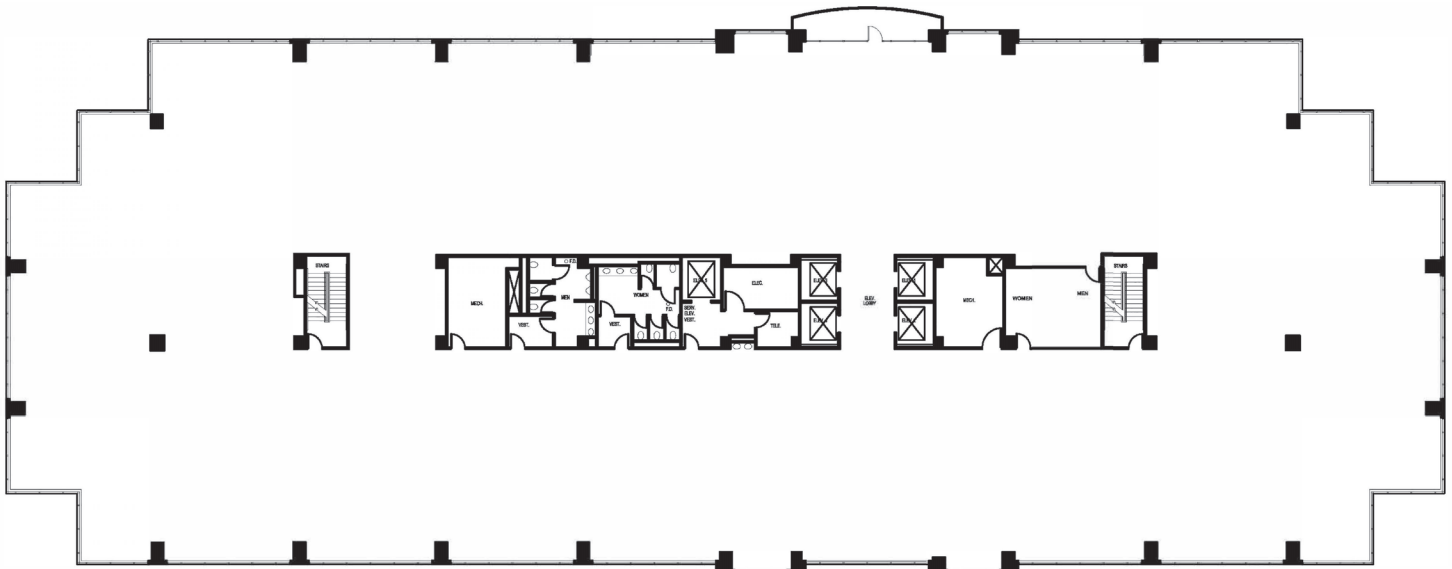
972 663 9634

matt.schendle@cushwake.com





4TH FLOOR
31,724 SF AVAILABLE



JOHN FANCHER
972 910 9360
john.fancher@cushwake.com

MATT SCHENDLE
972 663 9634
matt.schendle@cushwake.com





FOR LEASE

ONE COLINAS CROSSING

11701 Luna Rd. / Farmers Branch, TX



ONE
COLINAS
CROSSING

DOUBLETREE
BY HILTON

JOHN FANCHER

972 910 9360

john.fancher@cushwake.com

MATT SCHENDLE

972 663 9634

matt.schendle@cushwake.com

