



# COLONNADE II

8510 COLONNADE CENTER DRIVE  
RALEIGH, NC 27615

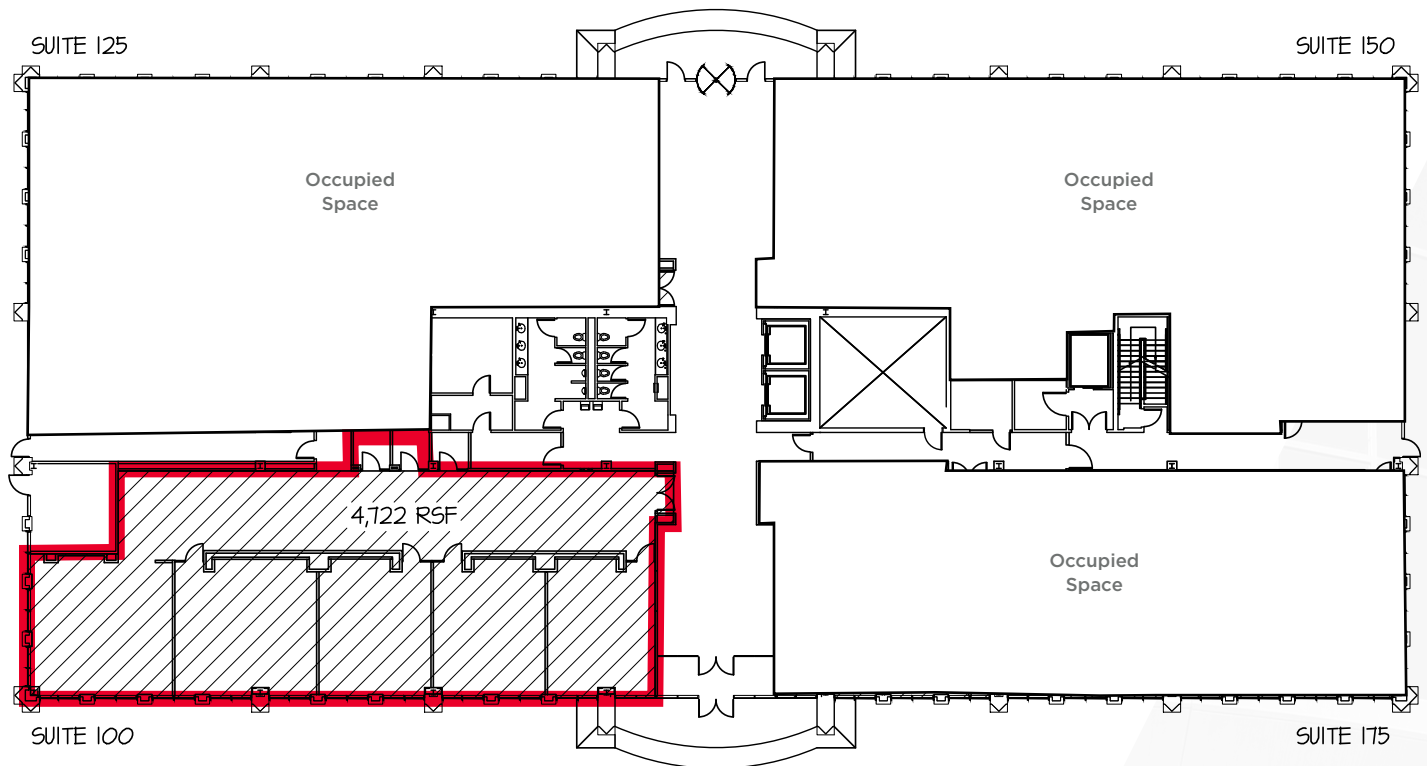


ALLEGIANCY

**4,722 SF  
CLASS A  
OFFICE SPACE  
NOW  
AVAILABLE!**



# FLOOR PLAN



## PROPERTY SUMMARY

- 126,926 square foot, 5-story Class A Office building
- Within walking distance of, restaurants and shopping
- Convenient North Raleigh location with immediate access to I-540, 15 minutes from RDU International Airport
- \$28.50/SF Full Service
- Free surface parking - 4.0/1000 ratio
- Lobby entrance on the first floor



**Kent Honeycutt**  
Senior Director  
+1 919 791 2109  
kent.honeycutt@cushwake.com

**Mac Hammer**  
Senior Director  
+1 919 439 5153  
mac.hammer@cushwake.com

3015 Carrington Mill Blvd., Suite 410, Morrisville, NC 27560 | +1 919 789 4255 | cushmanwakefield.com

©2019 Cushman & Wakefield. All rights reserved. The information contained in this communication is strictly confidential. This information has been obtained from sources believed to be reliable but has not been verified. NO WARRANTY OR REPRESENTATION, EXPRESS OR IMPLIED, IS MADE AS TO THE CONDITION OF THE PROPERTY (OR PROPERTIES) REFERENCED HEREIN OR AS TO THE ACCURACY OR COMPLETENESS OF THE INFORMATION CONTAINED HEREIN, AND SAME IS SUBMITTED SUBJECT TO ERRORS, OMISSIONS, CHANGE OF PRICE, RENTAL OR OTHER CONDITIONS, WITHDRAWAL WITHOUT NOTICE, AND TO ANY SPECIAL LISTING CONDITIONS IMPOSED BY THE PROPERTY OWNER(S). ANY PROJECTIONS, OPINIONS OR ESTIMATES ARE SUBJECT TO UNCERTAINTY AND DO NOT SIGNIFY CURRENT OR FUTURE PROPERTY PERFORMANCE.

## WALKABLE AMENITIES



Whole Foods



Panera Bread



Chick Fil A



The Home Depot



Food Lion



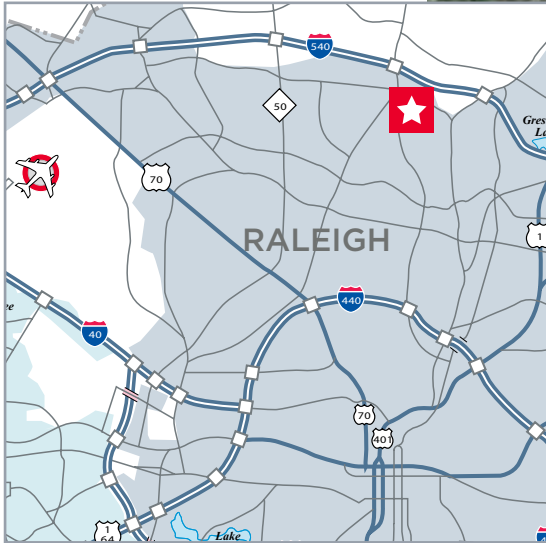
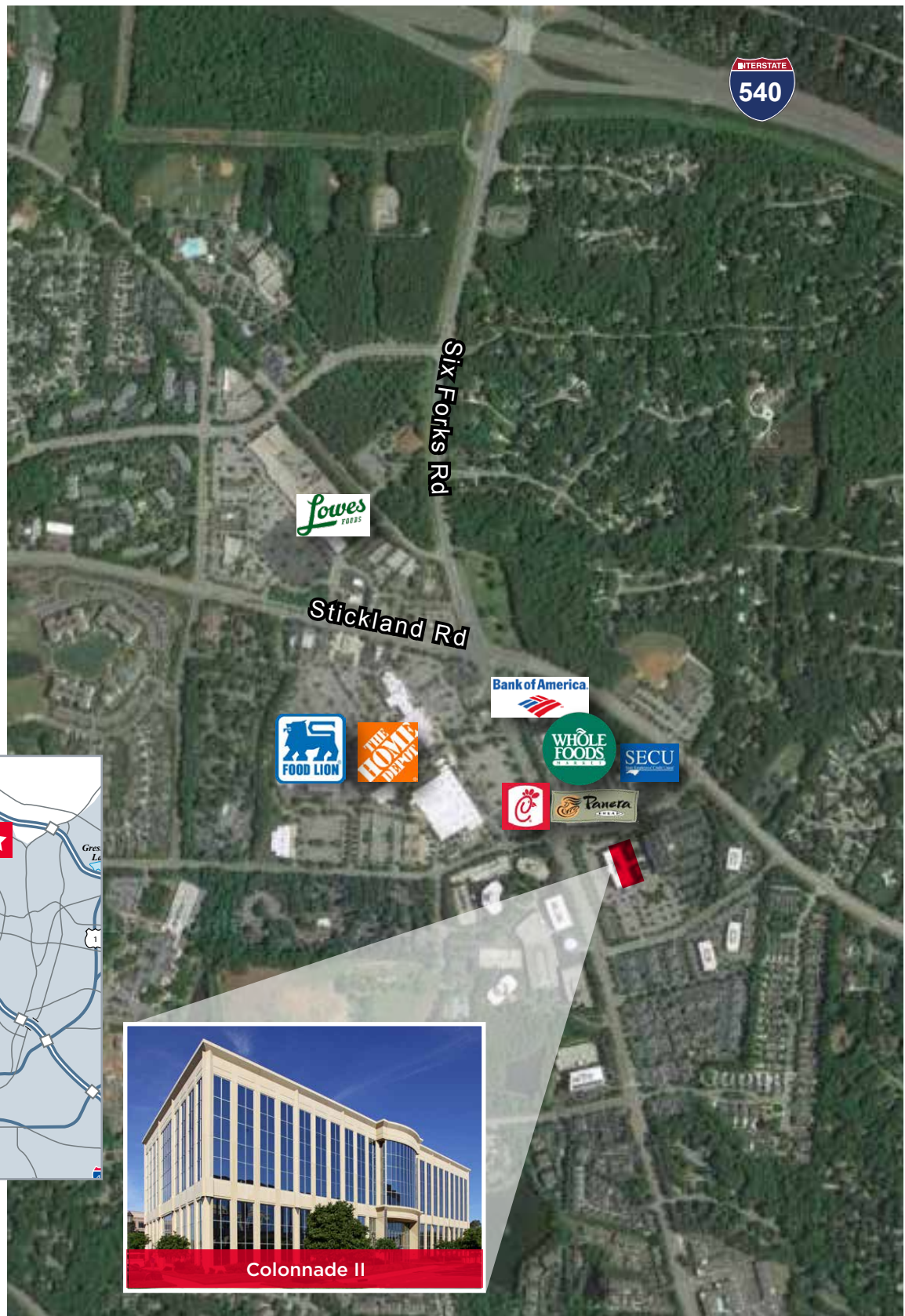
Lowe's Foods



State Employee's Credit Union



Bank of America



Colonnade II

**Kent Honeycutt**  
Senior Director  
+1 919 791 2109  
kent.honeycutt@cushwake.com

**Mac Hammer**  
Senior Director  
+1 919 439 5153  
mac.hammer@cushwake.com

3015 Carrington Mill Blvd., Suite 410, Morrisville, NC 27560  
+1 919 789 4255 | [cushmanwakefield.com](http://cushmanwakefield.com)