

# O N E D A G

TAKE A  
VIRTUAL TOUR!



8,039 SF AVAILABLE • ONE DAG PLAZA  
885 SECOND AVENUE • BETWEEN 47TH & 48TH STREETS



ARTIST'S RENDERING

Rockhill<sup>®</sup>  
MANAGEMENT

CUSHMAN &  
WAKEFIELD

# ONE END A G



ARTIST'S RENDERING

TAKE A  
VIRTUAL TOUR!



## AVAILABILITIES

|           |                            |
|-----------|----------------------------|
| GROUND    | 8,039 SF                   |
| CELLAR    | 24,562 SF <b>LEASE OUT</b> |
| SUBCELLAR | 7,735 SF <b>LEASE OUT</b>  |

## HIGHLIGHTS

- High-end office & residential neighborhood
- Proximity to the United Nations & Grand Central Terminal
- Fitness, QSR's, Medical, and all dry uses welcomed
- Multi-tenant divisions possible
- Potential outdoor seating for restaurant
- Potential lower level space available

## TOWER TENANTS

Telerep  
The Population Council  
Wachtel & Missry  
UN Pension Fund  
United Kingdom of Great Britain  
Mission of the French Republic  
The Kingdom of Sweden

# GROUND FLOOR SINGLE TENANT SCENARIO: 8,039 SF

FRONTAGE: 240+ FT

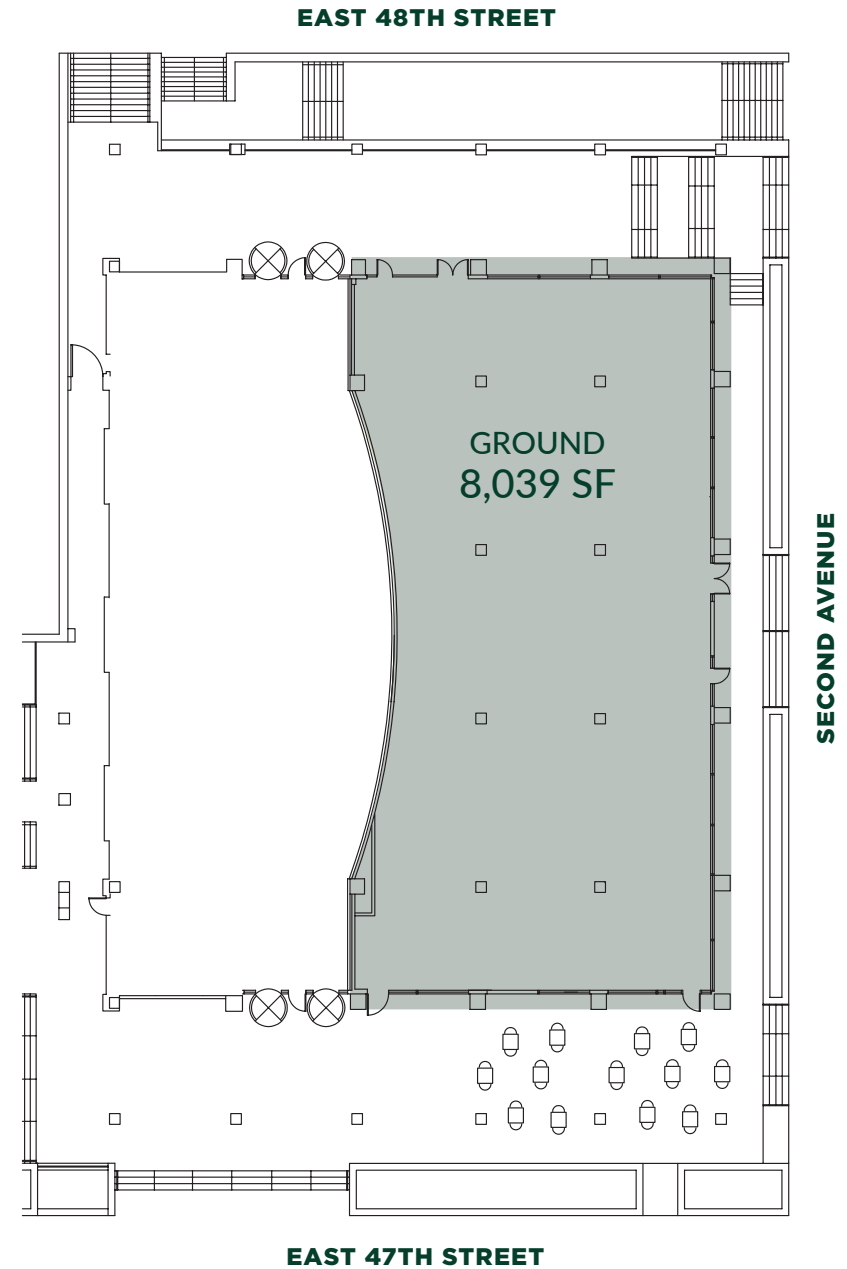
CEILING HEIGHT: 24'8"

POSSESSION: IMMEDIATE

LEASE TYPE: DIRECT

PRICE: UPON REQUEST

- Flexible Divisions
- Potential outdoor seating for restaurant on E 47th Street



## GROUND FLOOR MULTI-TENANT SCENARIO:

SPACE A **4,717 SF**

SPACE B **3,322 SF**

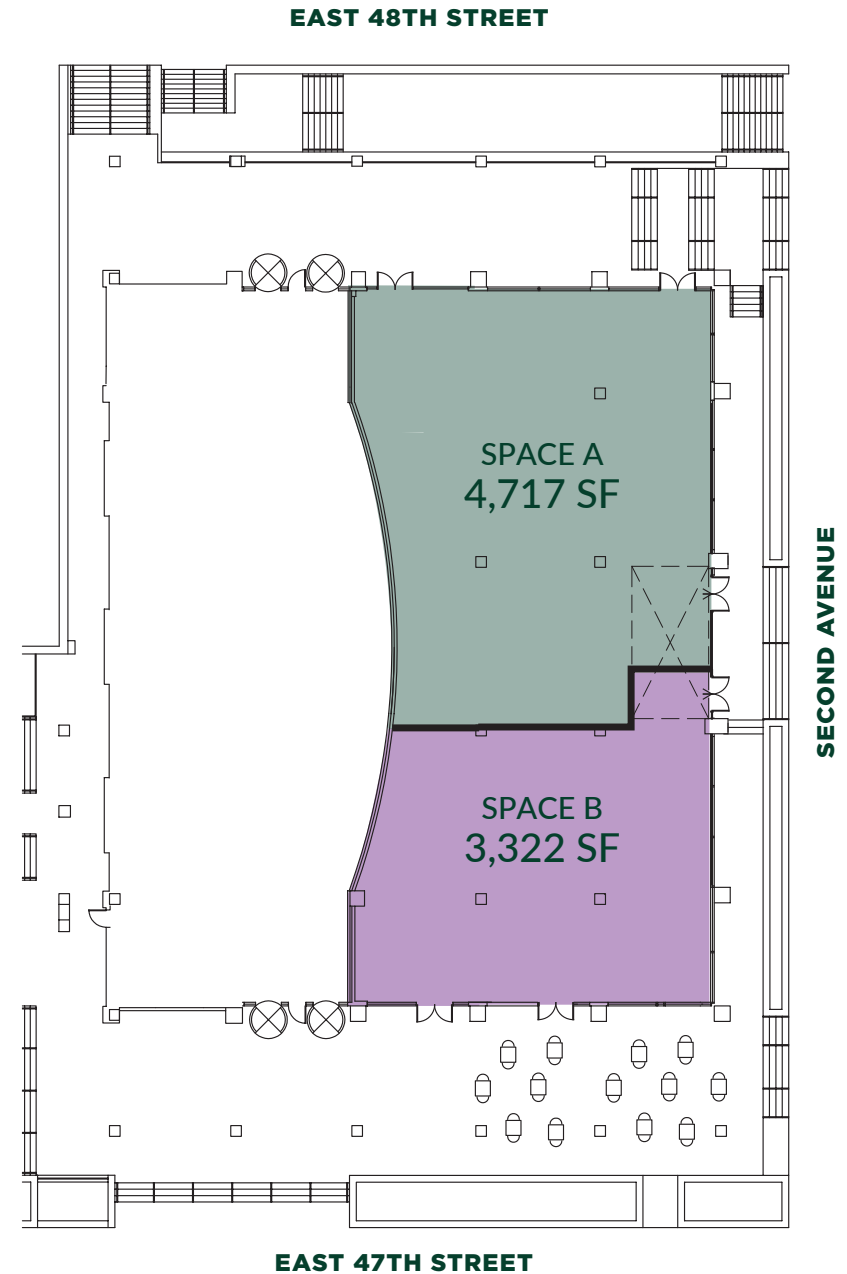
CEILING HEIGHT: 24' 8" FT

POSSESSION: IMMEDIATE

LEASE TYPE: DIRECT

PRICE: UPON REQUEST

- Flexible Divisions
- Potential outdoor seating for restaurant on E 47th Street



# LOWER LEVEL: 24,562 SF

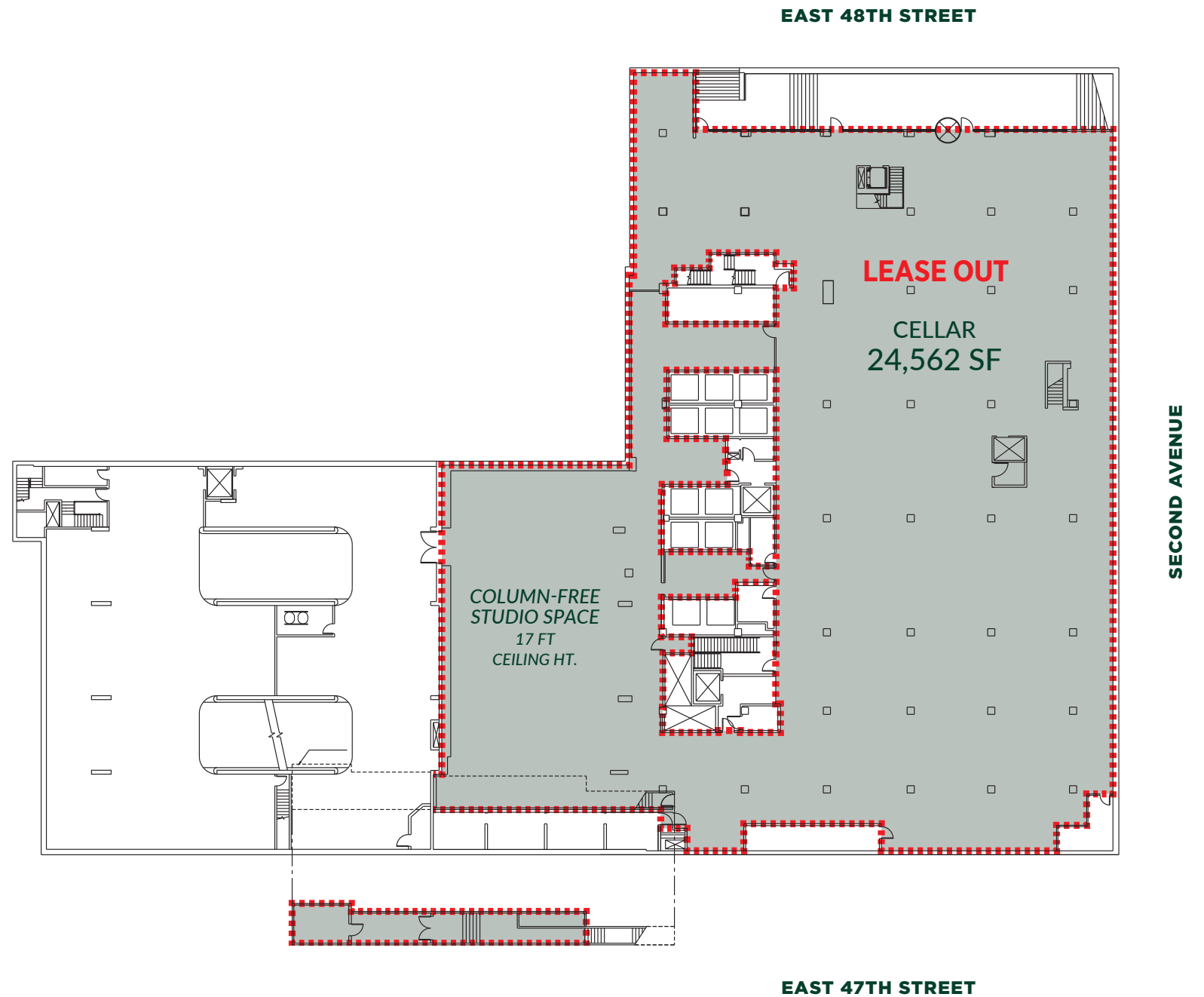
CEILING HEIGHT: 13' 5" – 17' (Studio)

POSSESSION: IMMEDIATE

LEASE TYPE: DIRECT

PRICE: UPON REQUEST

Flexible Divisions



# SUB LOWER LEVEL: 7,735 SF

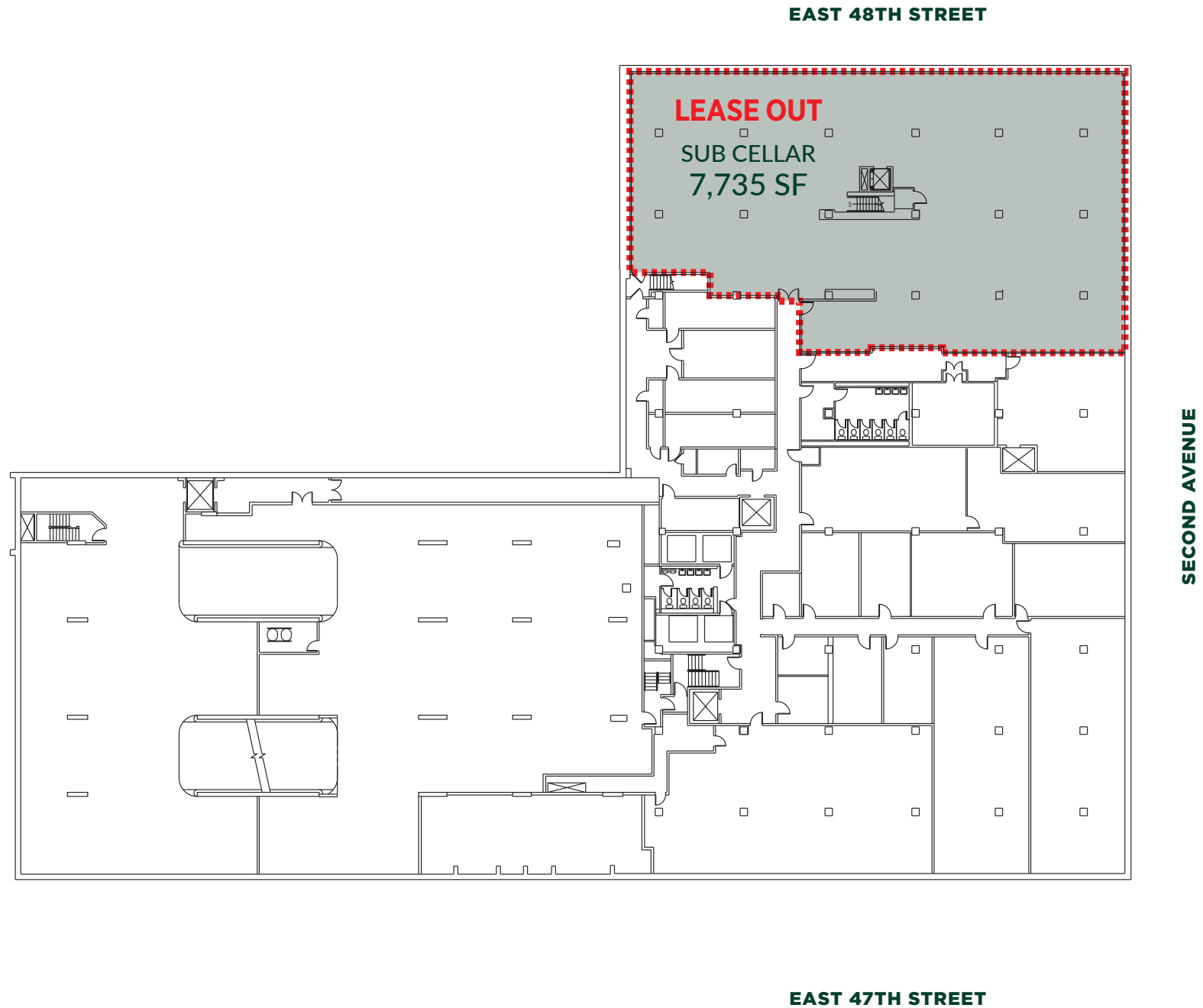
CEILING HEIGHT: 13' 5"

POSSESSION: IMMEDIATE

LEASE TYPE: DIRECT

PRICE: UPON REQUEST

Flexible Divisions



# NEIGHBORING TENANTS

The Smith

The Palm Too

Smith and Wollensky's

Sparks Steakhouse

Morton Williams Supermarket

La Pecora Bianca

For more information, please contact:

**KENJI OTA | 212 841 5909**

kenji.ota@cushwake.com

**STEVEN SOUTENDIJK | 212 713 6845**

steven.soutendijk@cushwake.com

**NEIL SETH | 212 841 5063**

neil.seth@cushwake.com



# O N E N D A G

For more information, please contact:

---

**KENJI OTA | 212 841 5909**  
kenji.ota@cushwake.com

**STEVEN SOUTENDIJK | 212 713 6845**  
steven.soutendijk@cushwake.com

**NEIL SETH | 212 841 5063**  
neil.seth@cushwake.com



**ARTIST'S RENDERING**

©2023 Cushman & Wakefield. All rights reserved. The information contained in this communication is strictly confidential. This information has been obtained from sources believed to be reliable but has not been verified. NO WARRANTY OR REPRESENTATION, EXPRESS OR IMPLIED, IS MADE AS TO THE CONDITION OF THE PROPERTY (OR PROPERTIES) REFERENCED HEREIN OR AS TO THE ACCURACY OR COMPLETENESS OF THE INFORMATION CONTAINED HEREIN, AND SAME IS SUBMITTED SUBJECT TO ERRORS, OMISSIONS, CHANGE OF PRICE, RENTAL OR OTHER CONDITIONS, WITHDRAWAL WITHOUT NOTICE, AND TO ANY SPECIAL LISTING CONDITIONS IMPOSED BY THE PROPERTY OWNER(S). ANY PROJECTIONS, OPINIONS OR ESTIMATES ARE SUBJECT TO UNCERTAINTY AND DO NOT SIGNIFY CURRENT OR FUTURE PROPERTY PERFORMANCE.