



**CUSHMAN &
WAKEFIELD**

FOR LEASE
845 STEWART DRIVE
SUNNYVALE, CALIFORNIA



±2,500 SF, ±4,128 SF, ±5,900 SF or ±12,528 SF with expansion to ±16,678 SF

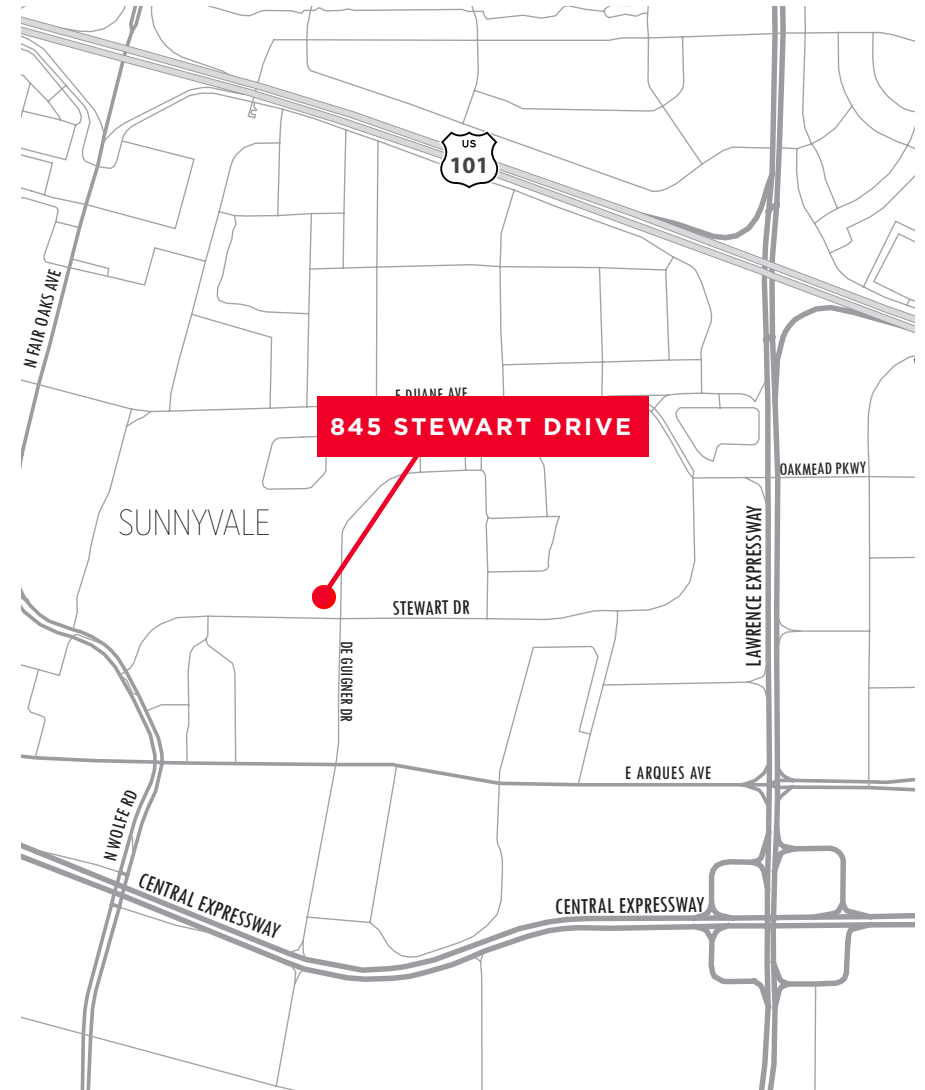
SUITE B: ±4,128 SF

SUITE C: ±2,500 SF

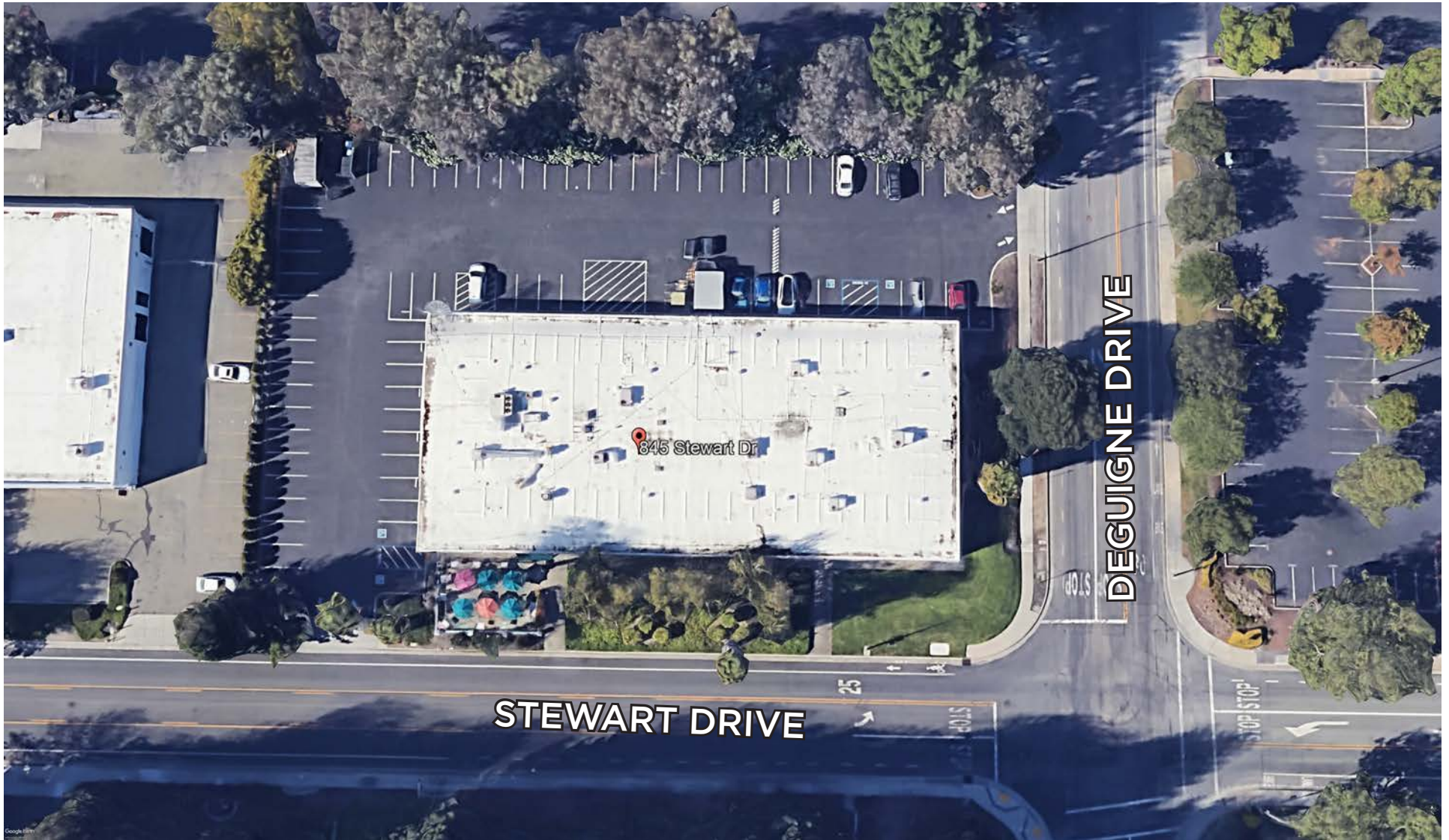
SUITE D: ±5,900 SF

HIGHLIGHTS

- ±16,678 SF Standalone Single-Story Building
- ±2,500 SF, ±4,128 SF, ±5,900 SF or ±12,528 SF with expansion to ±16,678 SF
- 3 contiguous R&D Spaces for lease
- Each Unit has Grade level loading doors
- 4.7/1000 parking ratio
- Suite A: ±4,150 SF is currently leased but could be made available for future expansion

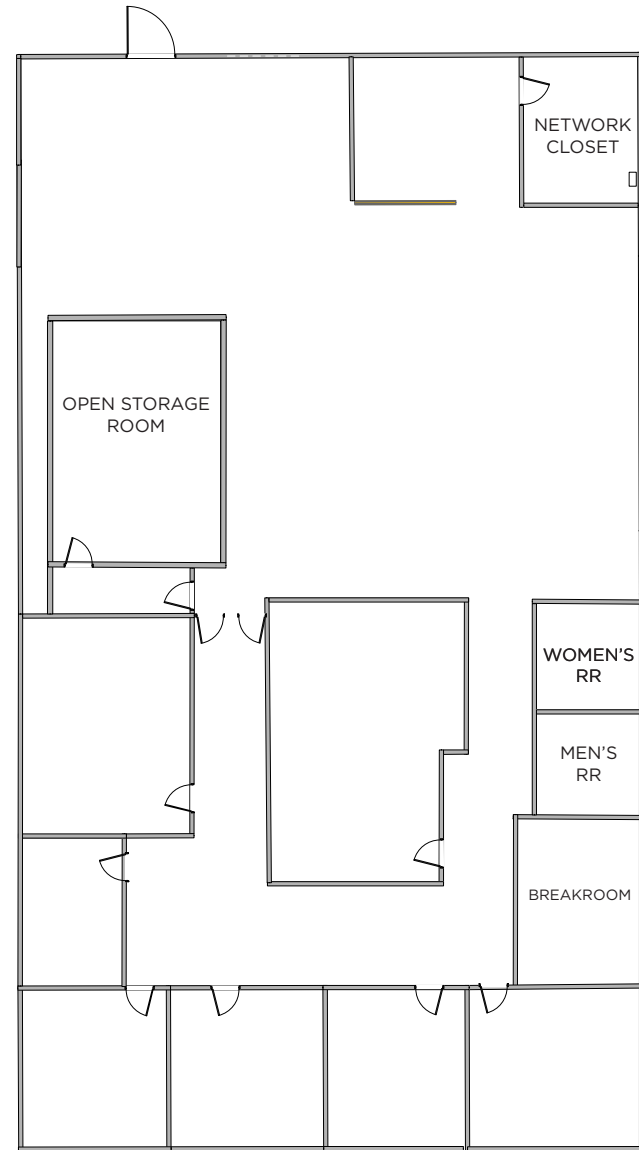


SITE PLAN



SUITE B: ±4,128 SF

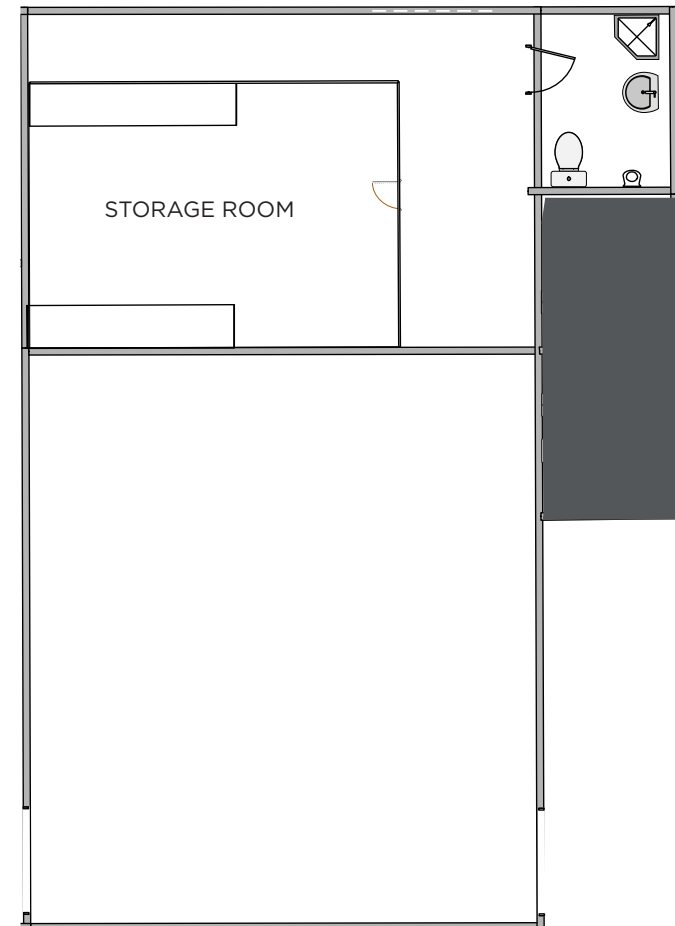
- 97% Drop Ceiling, HVAC
- 4 Privates, 1 Conference Room and Reception
- Street & Building Signage
- Grade Level Door
- 4.7/1,000 Parking Ratio
- Available September 1, 2024



FLOOR PLAN

SUITE C: ±2,500 SF

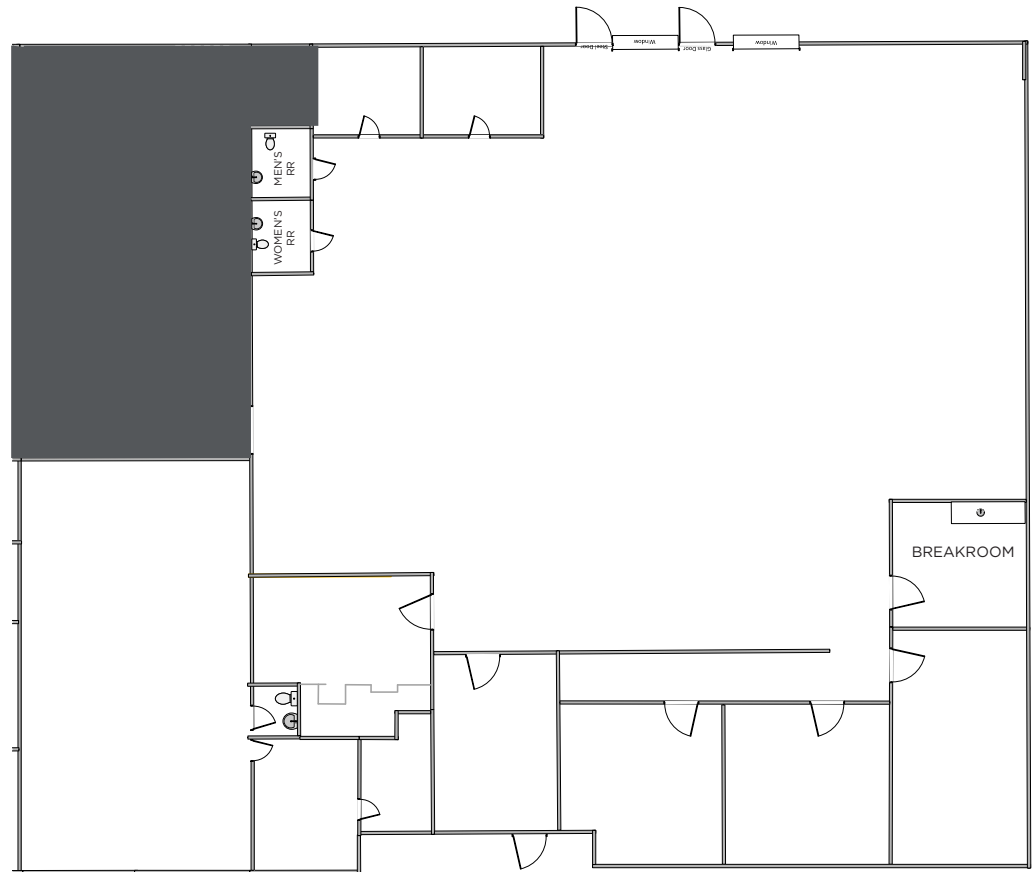
- 100% HVAC
- 80% Drop Ceiling
- 2 Privates & Reception
- Street & Building Signage
- Grade Level Door
- 4.7/1,000 Parking Ratio
- Available September 1, 2024



FLOOR PLAN

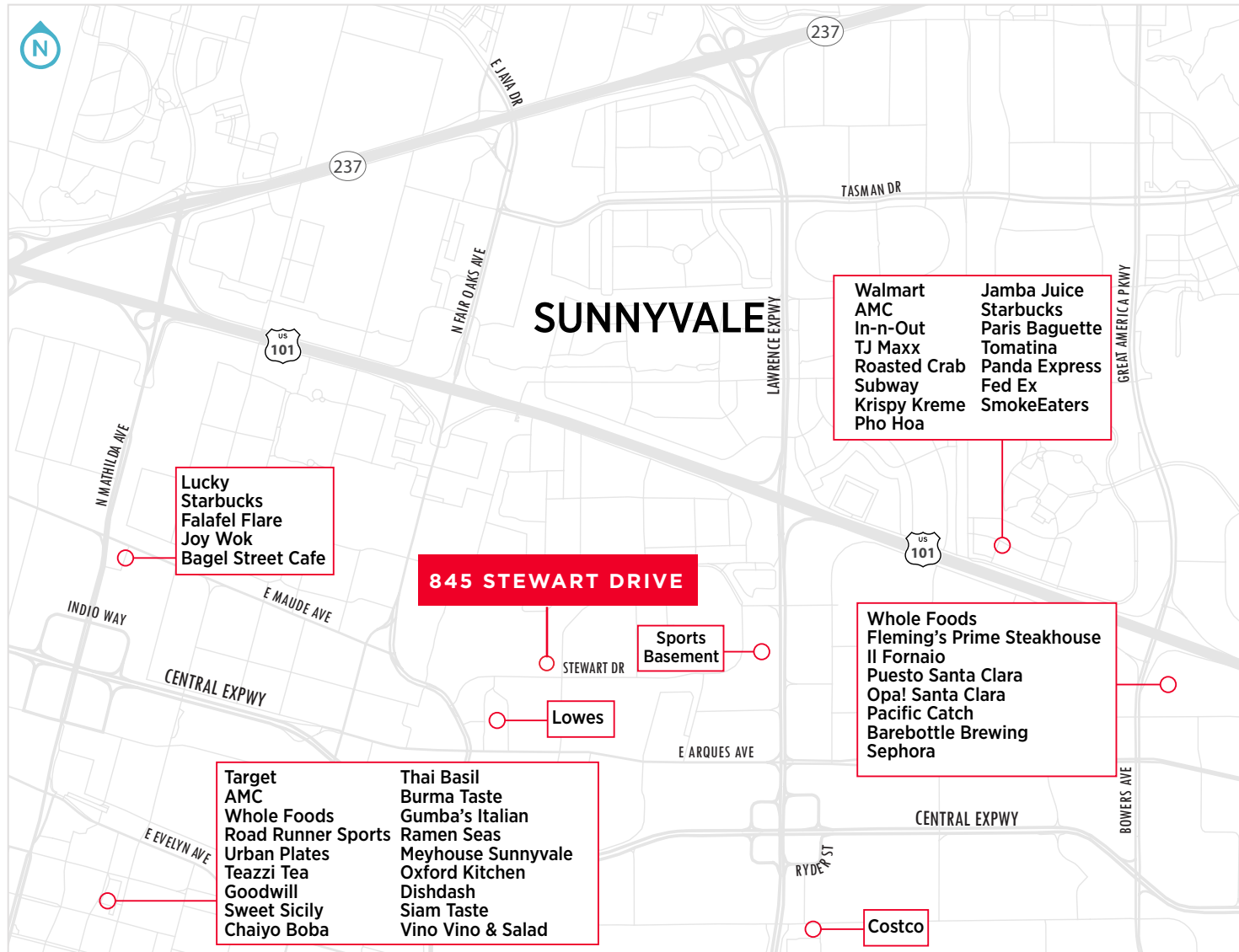
SUITE D: ±5,900 SF

- 100% HVAC w/10' Drop Ceiling
- Street & Building Signage
- Server Room w/Dedicated Air & 220 Volt, 2 Phase Ups
- 4.7/1,000 Parking Ratio
- Available September 1, 2024



FLOOR PLAN

AMENITIES



FOR LEASE

845 STEWART DRIVE
SUNNYVALE, CALIFORNIA

Steven Jenab | Director | +1 650 320 0211 | steven.jenab@cushwake.com | LIC #02085072

Kalil Jenab | Vice Chairman | +1 408 810 3428 | kalil.jenab@cushwake.com | LIC #00848988

