

3306-3346
HWY 97 NORTH

351

LOYD ROAD

Kelowna BC

FOR SALE

EXCEPTIONAL HIGHWAY FRONTAGE LAND OPPORTUNITY - 1.59 ACRES



**CUSHMAN &
WAKEFIELD**

3306-3346

HWY 97 NORTH

351

LOYD ROAD

Kelowna BC

LOCATION

Cushman & Wakefield ULC is pleased to offer for sale a 100% freehold interest in 3306 - 3346 HWY 97 North & 351 Loyd Road (collectively the "Property") located on the north end of Kelowna BC.

The 1.59 acre property adjacent to industrial, residential, self-storage, retail and many other amenities, showcases that this opportunity is second to none. With exposure and convenient access to the Highway 97N via Loyd Road, the Property is conveniently accessible yet offers the maximum exposure of a major regional transportation route.



//////////

PROPERTY HIGHLIGHTS

- Approximately 422' of high volume exposure along Hwy 97N
- Generally flat, crushed gravel and fenced
- 3 legal properties totaling 1.59 acres
- Major intersection (Loyd/Findlay), allowing for easy turning in all directions
- Flexible zoning allows for multiple uses
- Multiple existing structures could be utilized for low site coverage operators

LAND AREA

1.59 acres (69,381 Sq. Ft.)

APPROXIMATE DIMENSIONS

Frontage 422' along Hwy 97N

West Property Line 260'

North Property line 370'

CURRENT ZONING

I-2 General Industrial Zone

ASKING PRICE

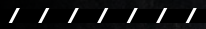
\$6,000,000

//////////



3306-3346
HWY 97 NORTH / **351**
LOYD ROAD
Kelowna BC

BLAKE GOZDA
Personal Real Estate Corporation
Vice President
604 608 5971
blake.gozda@cushwake.com



WEST
KELOWNA
25MIN DRIVE

OKANAGAN
LAKE

DOWNTOWN
15MIN DRIVE

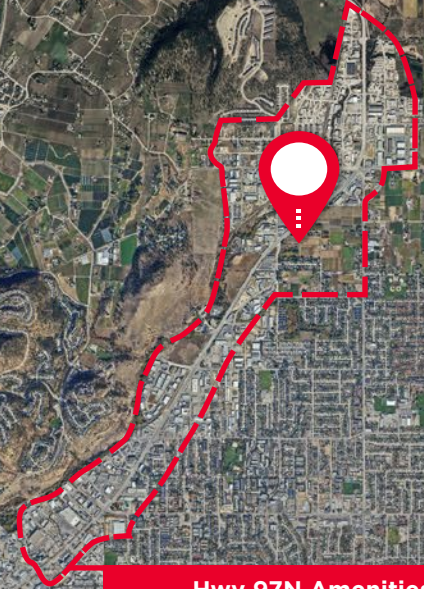
ORCHARD PARK
MALL

KELOWNA
GOLF & COUNTRY
CLUB

OKANAGAN
GOLF CLUB

YLW
10MIN DRIVE

UBCO



Hwy 97N Amenities

- Kal-Tire
- Fraserway RV
- Totom Storage
- Tim Horton's
- McDonald's
- Wal-Mart
- Home Depot
- BC Liquor Store
- Trail Appliance
- Multiple Hotels
- Multiple Automotive Dealers
- And many more!



Suite 1200 - 700 West Georgia Street
PO Box 10023, Pacific Centre
Vancouver, BC V7Y 1A1
cushmanwakefield.ca

©2024 Cushman & Wakefield ULC. All rights reserved. The information contained in this communication is strictly confidential. This information has been obtained from sources believed to be reliable but has not been verified. NO WARRANTY OR REPRESENTATION, EXPRESS OR IMPLIED, IS MADE AS TO THE CONDITION OF THE PROPERTY (OR PROPERTIES) REFERENCED HEREIN OR AS TO THE ACCURACY OR COMPLETENESS OF THE INFORMATION CONTAINED HEREIN, AND SAME IS SUBMITTED SUBJECT TO ERRORS, OMISSIONS, CHANGE OF PRICE, RENTAL OR OTHER CONDITIONS, WITHDRAWAL WITHOUT NOTICE, AND TO ANY SPECIAL LISTING CONDITIONS IMPOSED BY THE PROPERTY OWNER(S). ANY PROJECTIONS, OPINIONS OR ESTIMATES ARE SUBJECT TO UNCERTAINTY AND DO NOT SIGNIFY CURRENT OR FUTURE PROPERTY PERFORMANCE.