

FOR LEASE

# CENTURY WAY PLAZA

2099 South Century Way, Boise, Idaho 83709



## SECOND FLOOR OFFICE SPACE



**DAVE WINDER, CCIM**

Director  
Capital Markets | Land  
+1 208 287 9498  
dave.winder@cushwake.com

**RIVER CURTIS**

Associate  
Industrial Specialist  
+1 208 287 8906  
river.curtis@cushwake.com

999 West Main Street, Ste 1300  
Boise, Idaho 83702  
Main +1 208 287 9500  
Fax +1 208 287 9501  
[cushmanwakefield.com](http://cushmanwakefield.com)

# FOR LEASE

# CENTURY WAY PLAZA

## 2099 South Century Way, Boise, Idaho 83709



### PROPERTY HIGHLIGHTS

Available	<b>3,700 SF - Second Floor</b>
Lease Rate	<b>\$8.11/SF (\$2,500/Month)</b>
Lease Type	<b>Full Service Excluding Janitorial</b>
Building	<b>7,600 SF Total</b>
Lot Size	<b>1.08 Acres</b>
Zoning	<b>City of Boise-M-1/D</b>
Parcel Number	<b>R8048140040</b>
LockBox	<b>No, Contact Agents to Schedule Tours</b>

### PROPERTY FEATURES

- Second floor walk-up office space available
- Space consists of three large classroom-type rooms and one restroom
- On-site parking provided for clients and staff
- Easy access via I-84 Cole/Overland Interchange
- Current co-tenant is General Services Administration



**DAVE WINDER, CCIM**  
Director  
Capital Markets | Land  
+1 208 287 9498  
dave.winder@cushwake.com

**RIVER CURTIS**  
Associate  
Industrial Specialist  
+1 208 287 8906  
river.curtis@cushwake.com

999 West Main Street, Ste 1300  
Boise, Idaho 83702  
Main +1 208 287 9500  
Fax +1 208 287 9501  
[cushmanwakefield.com](http://cushmanwakefield.com)

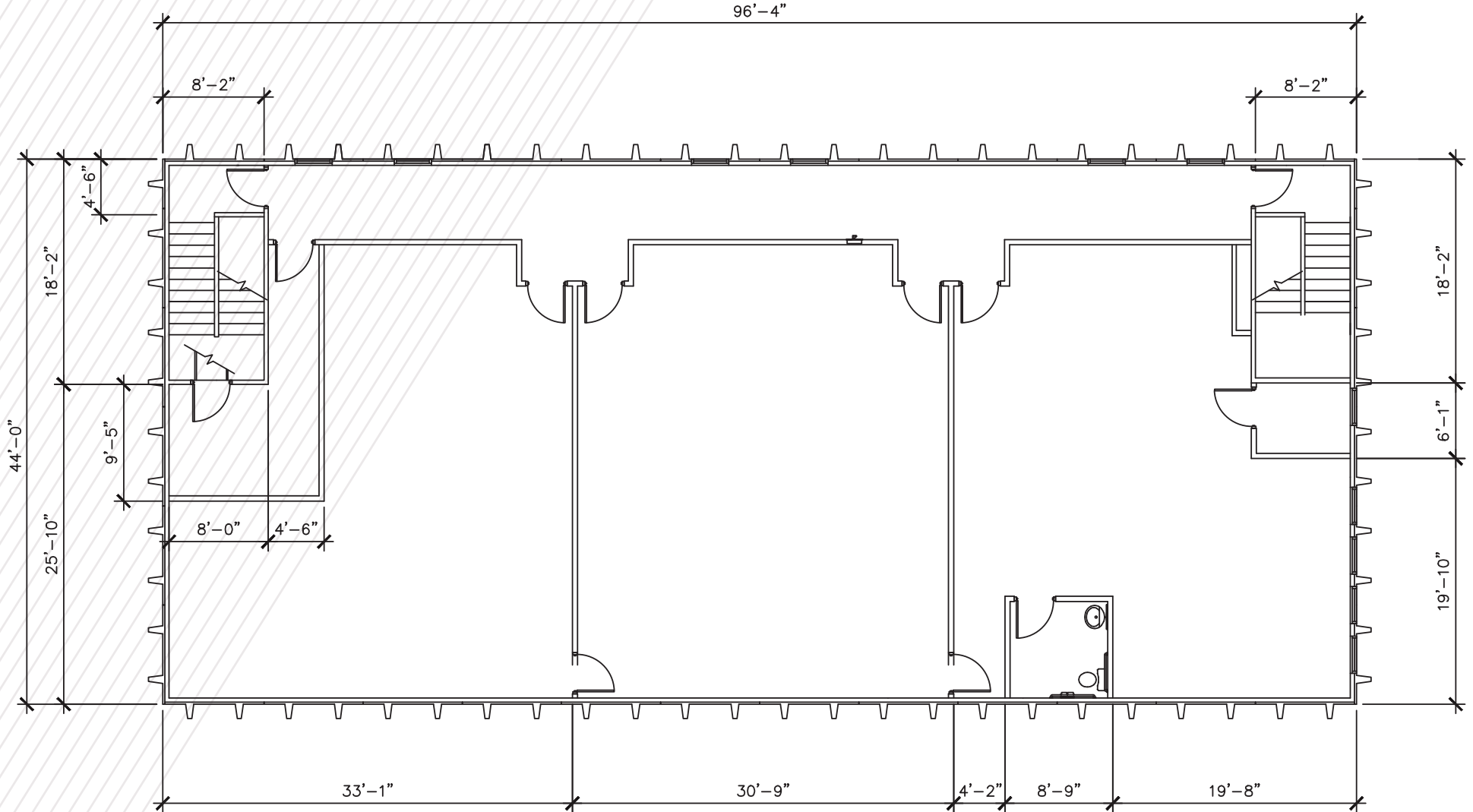
FOR LEASE

# CENTURY WAY PLAZA

2099 South Century Way, Boise, Idaho 83709



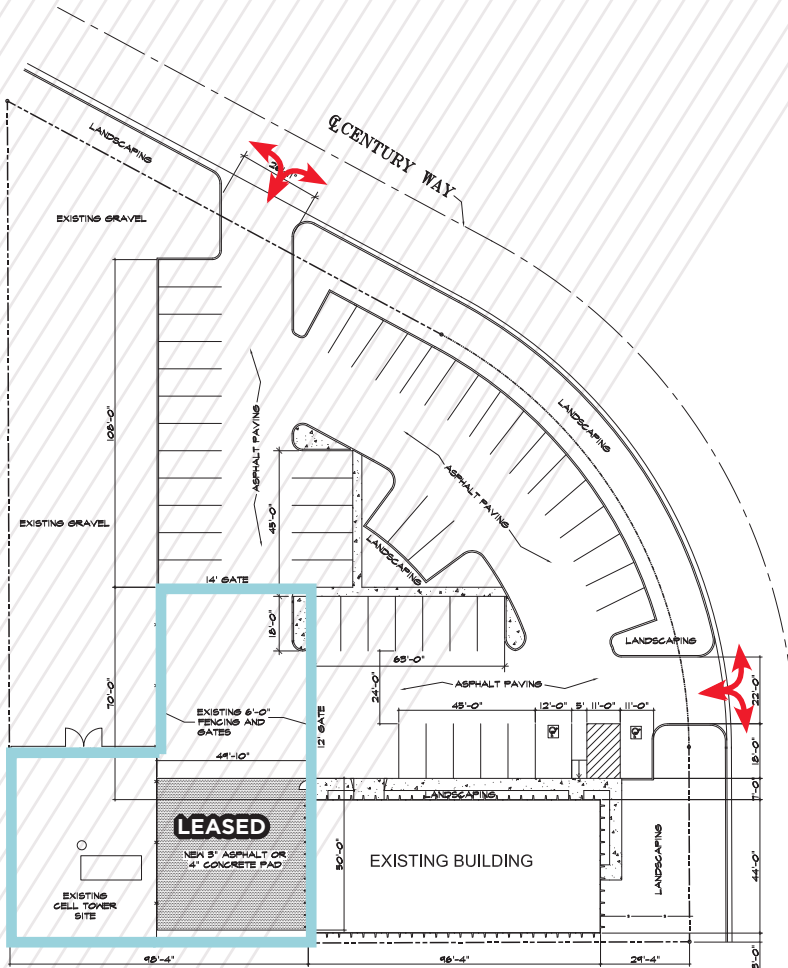
SECOND FLOOR AVAILABLE - 3,700 SF - \$2500/MONTH FSEJ



FOR LEASE  
**CENTURY WAY PLAZA**  
 2099 South Century Way, Boise, Idaho 83709



SECOND FLOOR AVAILABLE - 3,700 SF - \$2500/MONTH FSEJ



**SITE PLAN**  
 1"=20'-0"



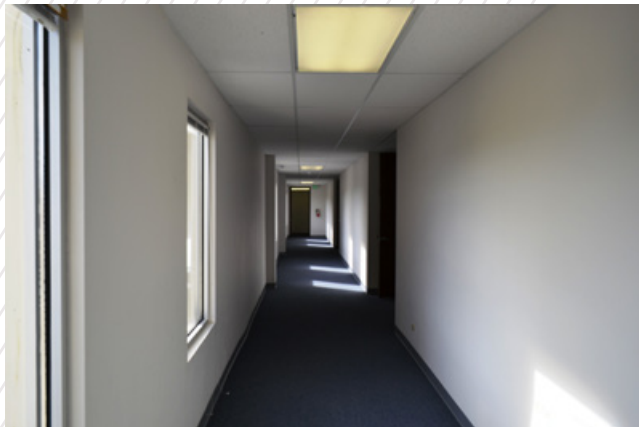
FOR LEASE

# CENTURY WAY PLAZA

2099 South Century Way, Boise, Idaho 83709



SECOND FLOOR AVAILABLE - 3,700 SF - \$2500/MONTH FSEJ



**DAVE WINDER, CCIM**  
Director  
Capital Markets | Land  
+1 208 287 9498  
dave.winder@cushwake.com

**RIVER CURTIS**  
Associate  
Industrial Specialist  
+1 208 287 8906  
river.curtis@cushwake.com

999 West Main Street, Ste 1300  
Boise, Idaho 83702  
Main +1 208 287 9500  
Fax +1 208 287 9501  
[cushmanwakefield.com](http://cushmanwakefield.com)

FOR LEASE

# CENTURY WAY PLAZA

2099 South Century Way, Boise, Idaho 83709

