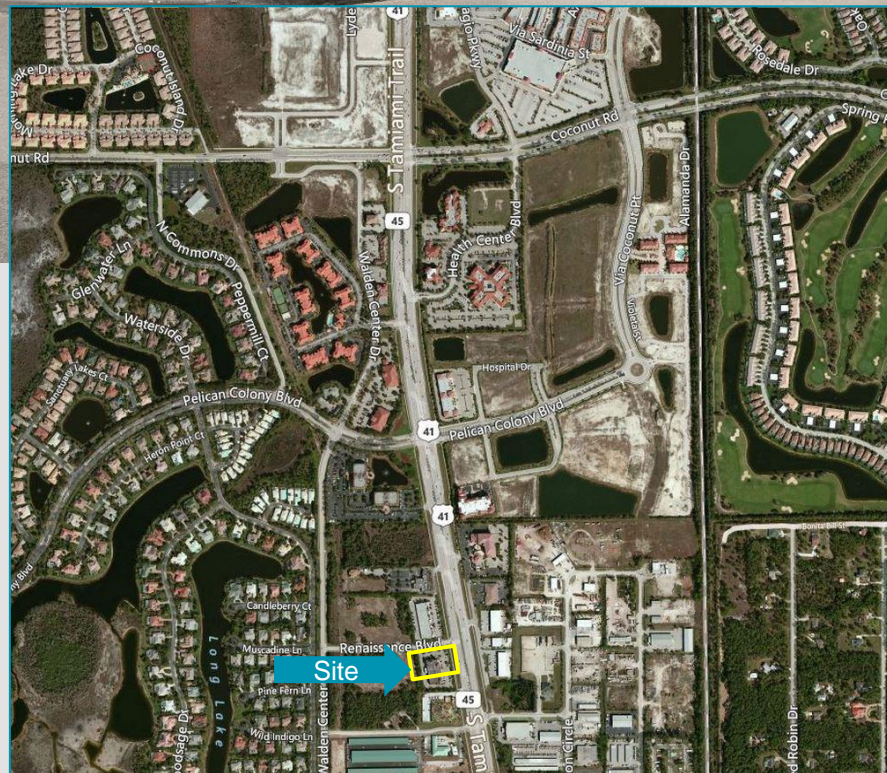


**2ND FLOOR EXECUTIVE SUITES
ABOVE WILSON LIGHTING**


BUILDING FEATURES	
LEASE RATE	\$33.00-\$37.00 psf
UNIT SIZE	156-270 sf
YEAR BUILT	2001
ZONING	CPD
PARCEL ID	16-47-25-B2-02200.C000

Property Highlights

- Units are all on the 2nd floor, above the Wilson Lighting Store
- Includes a shared conference room, elevator, mailbox & 24/7 access. No Wi-Fi or Phone Incl.
- On-site building management
- Building fronts on US-41
- Easy access to FGCU, I-75, three regional malls, Naples & Fort Myers
- Not all uses will apply here – call for details



For more information, please contact:

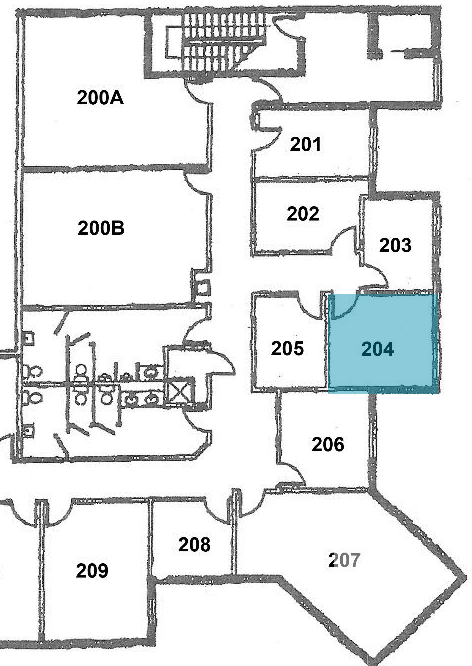
GARY TASMAN
CEO/Principal Broker
239.489.3600
qtasman@cpswfl.com

HANNA RAY
Director
239.489.3600
hray@cpswfl.com

5220 Summerlin Commons Blvd. Ste. 500
Fort Myers, FL 33907
239.489.3600
www.cpswfl.com

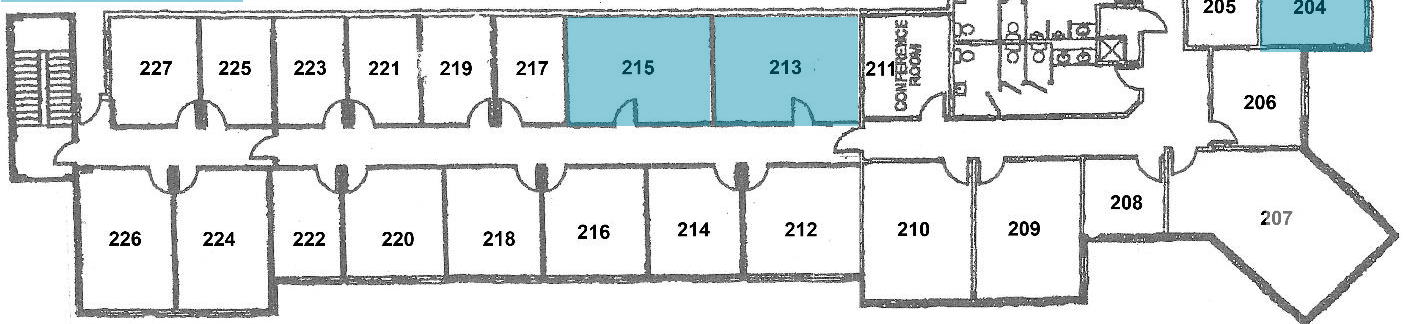


UNIT #	UNIT SIZE	MONTHLY TOTAL*
204	156 SF	\$481.00
213	280 SF	\$770.00
215	270 SF	\$742.50



* No Sales Tax Included

AVAILABLE SUITES



US 41 SIDE

GARY TASMAN
CEO/Principal Broker
239.489.3600
gtasman@cpswfl.com

HANNA RAY
Director
239.489.3600
hray@cpswfl.com

5220 Summerlin Commons Blvd. Ste. 500
Fort Myers, FL 33907
239.489.3600
www.cpswfl.com