

FOR LEASE

9625 E 150th Street

Noblesville, IN

3,180 SF - 4,444 SF



PROPERTY HIGHLIGHTS

Freestanding, 64,000 SF (294' X 144') Class A building on 4.69 AC, zoned PB

Available suites for lease:

206 - 4,444 SF

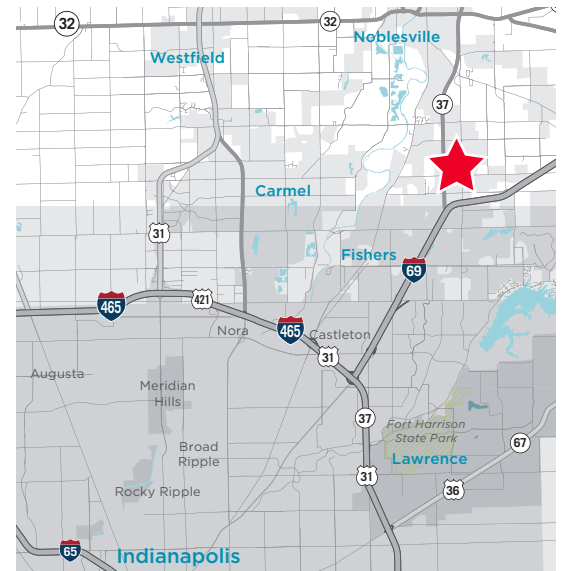
207 - 3,180 SF

204 - 1,824 SF (Sublease)

Located within the Noblesville Corporate Campus, at SR 37 & 146th St., minutes from I-69

Surrounded by many new developments, zoning offers flexible uses: specialty retail, industrial/manufacturing, Medical and Office

Ideal location for corporate headquarters, ample parking and ability to expand



CARMEN THOMPSON

Senior Associate

+1 317 352 5430

carmen.thompson@cushwake.com

KEVIN ARCHER

Director

+1 317 218 7217

kevin.archer@cushwake.com



**CUSHMAN &
WAKEFIELD**

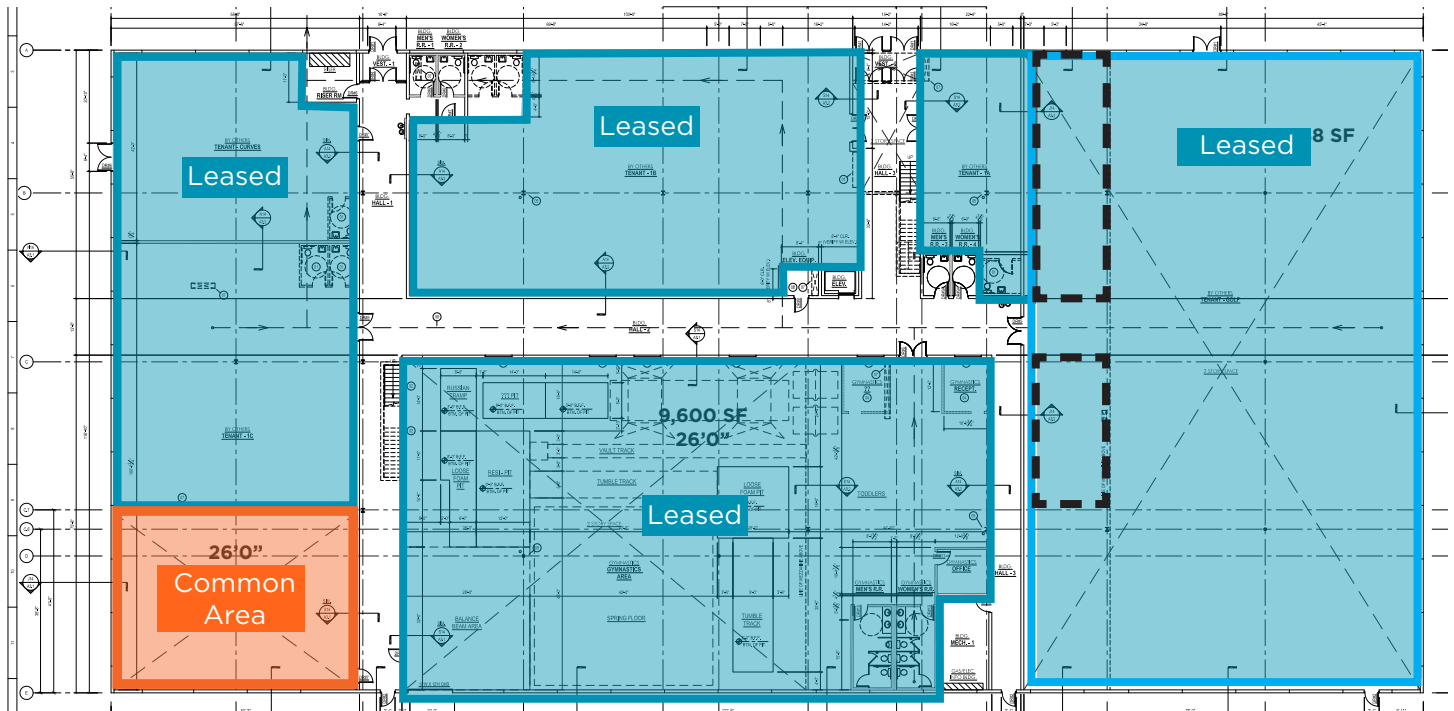
cushmanwakefield.com

9625 E 150th Street

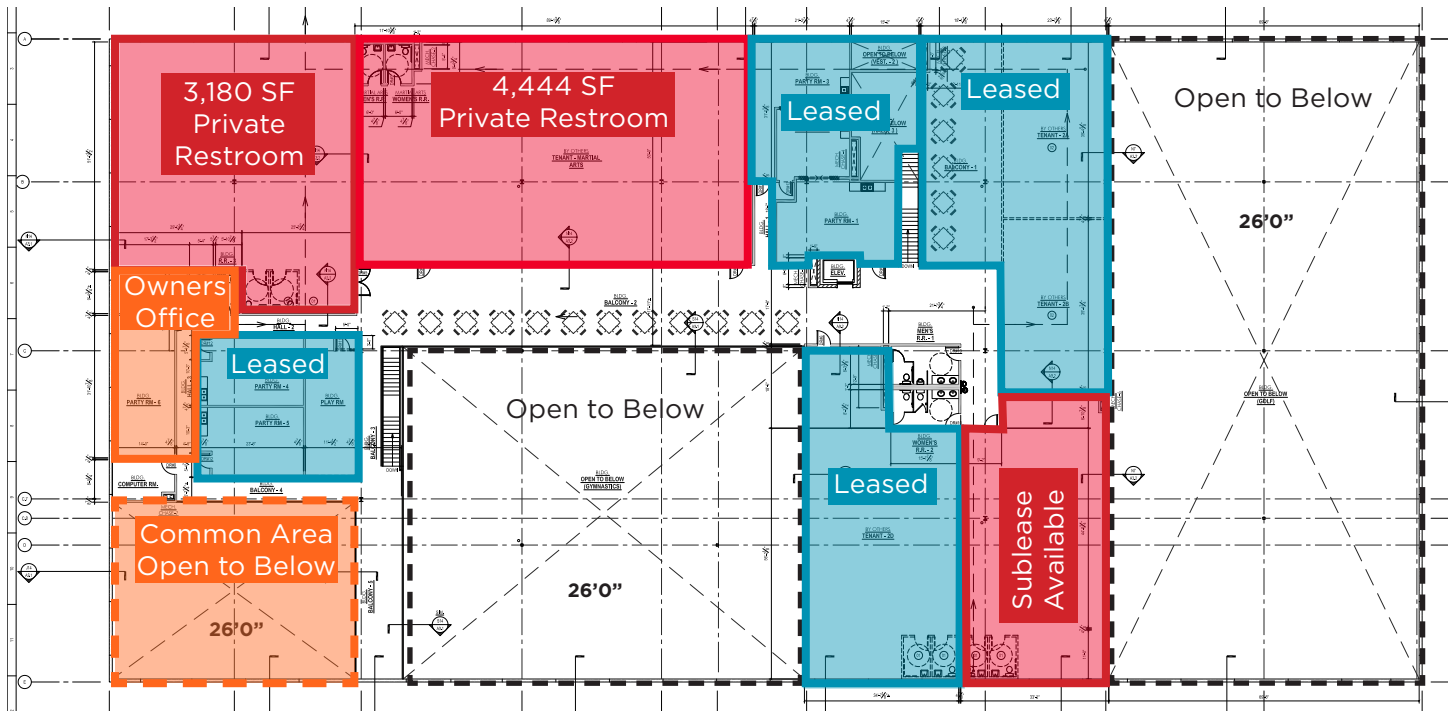
Noblesville, IN

3,180 SF - 4,444 SF

First Floor



Second Floor



FOR LEASE

Property Highlights

Address	9625 E 150th St Noblesville, IN 46060
Year Built	2007
Total Building SF	64,000 SF (294' X 144') 1st Floor: 42,000 SF Partial 2nd level: 22,000 SF
Land Area	±4.69 acres
Clear Height	10' 6" - 26'
Electrical	1600 AMPS- 240V / 3 Phase System
Drive-ins	One
Zoning	PB
Parking	2.66/1,000 SF
Taxes	\$1.00/SF (2021, pay 2022)



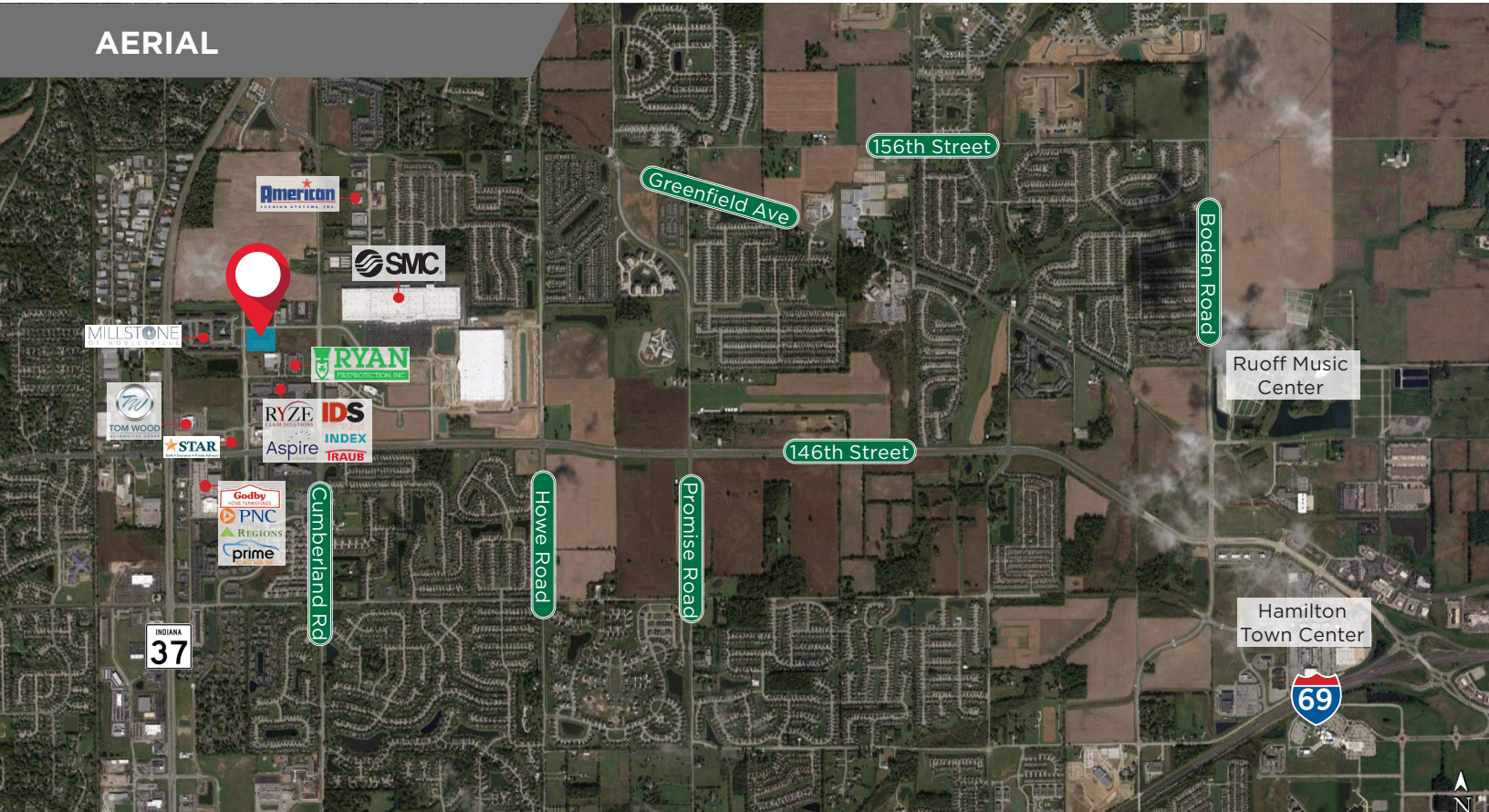
9625 E 150th Street

Noblesville, IN

3,180 SF - 4,444 SF

FOR LEASE

AERIAL



Demographics

	1 Mile	2 Mile	3 Mile
Population	10,475	71,497	159,708
AVG. HH Income	\$79,921	\$129,881	\$123,036
Daytime Population	12,576	71,610	144,722

Traffic Counts

Cumberland Road	6,883 ADT
146th Street	22,932 ADT
SR 37	35,553 ADT

CARMEN THOMPSON

Senior Associate

+1 317 352 5430

carmen.thompson@cushwake.com

KEVIN ARCHER

Director

+1 317 218 7217

kevin.archer@cushwake.com

One American Square, Suite 1800

Indianapolis, IN 46282

Main +1 317 639 0515

Fax +1 317 639 0504

cushmanwakefield.com



**CUSHMAN &
WAKEFIELD**

cushmanwakefield.com