

15 PAMARON WAY

FLEX BUILDING FOR LEASE - NOVATO, CA



Brian Foster
Executive Director
+1 415 451 2437
brian.foster@cushwake.com
Lic #: 01393059

Trevor Buck
Executive Managing Director
+1 415 451 2436
trevor.buck@cushwake.com
Lic #: 01255462



BUILDING OVERVIEW

15 Pamaron Way in Novato is a high-end creative office and warehouse building with the ability for production space with existing floor drains. The building was recently painted and features polished concrete floors, an open ceiling creative office, full height glass walls for private offices, and professional landscaping. There is a fitness center, 2 sets of restrooms, and a large break room with a residential style kitchen. The office space can be converted back into warehouse.

Building Size:	± 11,117 SF
Divisible:	± 3,000 SF
Existing Office:	± 7,245 SF
Fitness Center:	± 968 SF
Warehouse:	± 2,904 SF
Grade Level Doors:	3 (ability to have up to 8)
Clear Height:	± 15 SF
Floor Drains:	Existing
Zoning:	PD

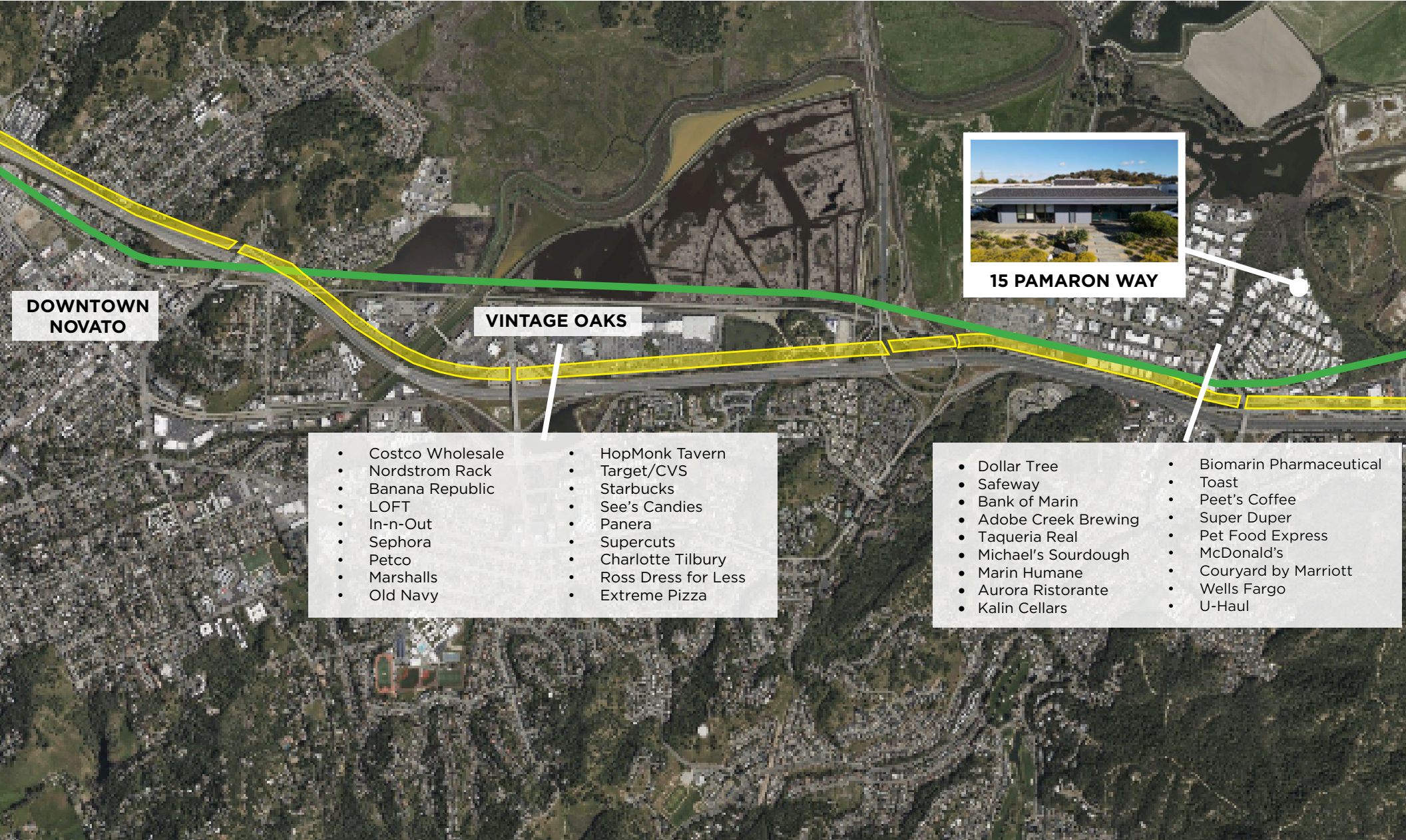






FLOOR PLAN 15 PAMARON WAY - 11,117 sf

SCALE: 1/16"=1'-0"



DOWNTOWN NOVATO

- Costco Wholesale
- Nordstrom Rack
- Banana Republic
- LOFT
- In-n-Out
- Sephora
- Petco
- Marshalls
- Old Navy

VINTAGE OAKS

- HopMonk Tavern
- Target/CVS
- Starbucks
- See's Candies
- Panera
- Supercuts
- Charlotte Tilbury
- Ross Dress for Less
- Extreme Pizza



15 PAMARON WAY

- Dollar Tree
- Safeway
- Bank of Marin
- Adobe Creek Brewing
- Taqueria Real
- Michael's Sourdough
- Marin Humane
- Aurora Ristorante
- Kalin Cellars

- Biomarin Pharmaceutical
- Toast
- Peet's Coffee
- Super Duper
- Pet Food Express
- McDonald's
- Courtyard by Marriott
- Wells Fargo
- U-Haul