



ARES  
INDUSTRIAL  
MANAGEMENT

COMPLETION  
3 | Q  
2 0 2 5

# HARVILL BUSINESS CENTER

23784 ORANGE AVENUE, PERRIS, CA 92570

[HARVILLBIZCENTER.COM](http://HARVILLBIZCENTER.COM)

FOR LEASE | 429,823 SQ FT | Class A Warehouse Facility

**UNDER CONSTRUCTION**



**CHUCK BELDEN, SIOR**

909 942 4640  
chuck.belden@cushwake.com  
CA License #00844840

**PHIL LOMBARDO**

909 942 4678  
phil.lombardo@cushwake.com  
CA License #00892477

**TIM PIMENTEL, SIOR**

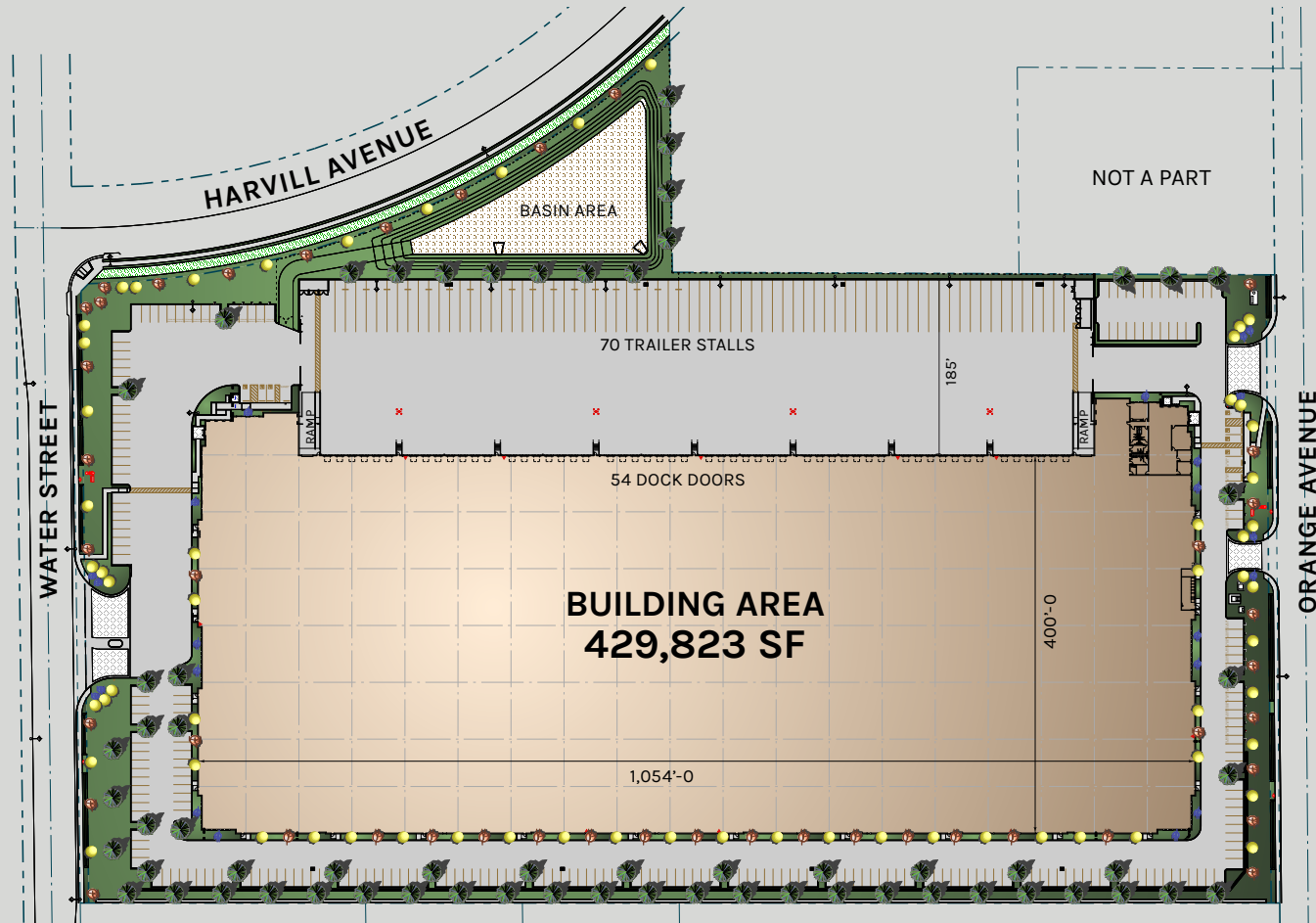
909 942 4647  
tim.pimentel@cushwake.com  
CA License #01421452

**ANDREW STARNES**

909 942 4667  
andrew.starnes@cushwake.com  
CA License #01799801

# Property FEATURES

- 429,823 SF Warehouse Facility
- ±4,773 SF Office Area
- 40' Clear Height
- 54 Dock High / 2 Grade Level Doors
- 185' Truck Court
- 70 Trailer Stalls
- 247 Auto Parking
- ESFR (K-25) Sprinklers
- 4,000 amp UGPS (3,000 amp main switchboard)
- 2.5% Skylights
- Pursuing LEED Silver Certification



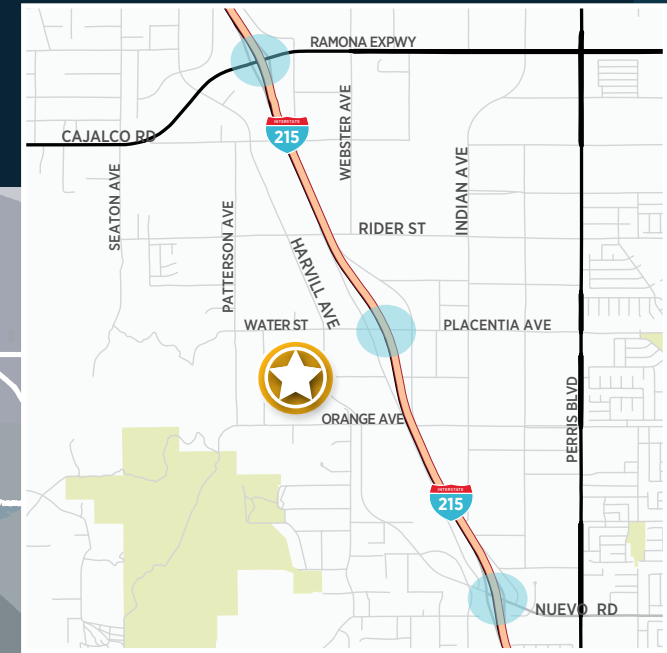
ARES  
INDUSTRIAL  
MANAGEMENT



NORTH

# Location HIGHLIGHTS

- I-215 South Corridor Submarket
- Excellent Freeway Access via Placentia Ave and Nuevo Rd On/Off Ramps
- 12 miles to the I-215/SR-60 Interchange
- 30 miles to Ontario International Airport
- 72 miles to Ports of Los Angeles / Long Beach
- 78 miles to Los Angeles International Airport



**HARVILL BUSINESS CENTER**  
 23784 ORANGE AVENUE, PERRIS, CA 92570



## ABOUT ARES MANAGEMENT CORPORATION

Ares Management Corporation (NYSE: ARES) is a leading global alternative investment manager offering clients complementary primary and secondary investment solutions across the credit, private equity, real estate and infrastructure asset classes. We seek to provide flexible capital to support businesses and create value for our stakeholders and within our communities. By collaborating across our investment groups, we aim to generate consistent and attractive investment returns throughout market cycles. For more information, please visit [www.aresmgmt.com](http://www.aresmgmt.com).



**CHUCK BELDEN, SIOR**

909 942 4640  
chuck.belden@cushwake.com  
CA License #00844840

**PHIL LOMBARDO**

909 942 4678  
phil.lombardo@cushwake.com  
CA License #00892477

**TIM PIMENTEL, SIOR**

909 942 4647  
tim.pimentel@cushwake.com  
CA License #01421452

**ANDREW STARNES**

909 942 4667  
andrew.starnes@cushwake.com  
CA License #01799801