



ARES
INDUSTRIAL
MANAGEMENT

COMPLETION
3 | Q
2 0 2 5

HARVILL BUSINESS CENTER

23784 ORANGE AVENUE, PERRIS, CA 92570

HARVILLBIZCENTER.COM

FOR LEASE | 429,823 SQ FT | Class A Warehouse Facility

UNDER CONSTRUCTION



CHUCK BELDEN, SIOR

909 942 4640
chuck.belden@cushwake.com
CA License #00844840

PHIL LOMBARDO

909 942 4678
phil.lombardo@cushwake.com
CA License #00892477

TIM PIMENTEL, SIOR

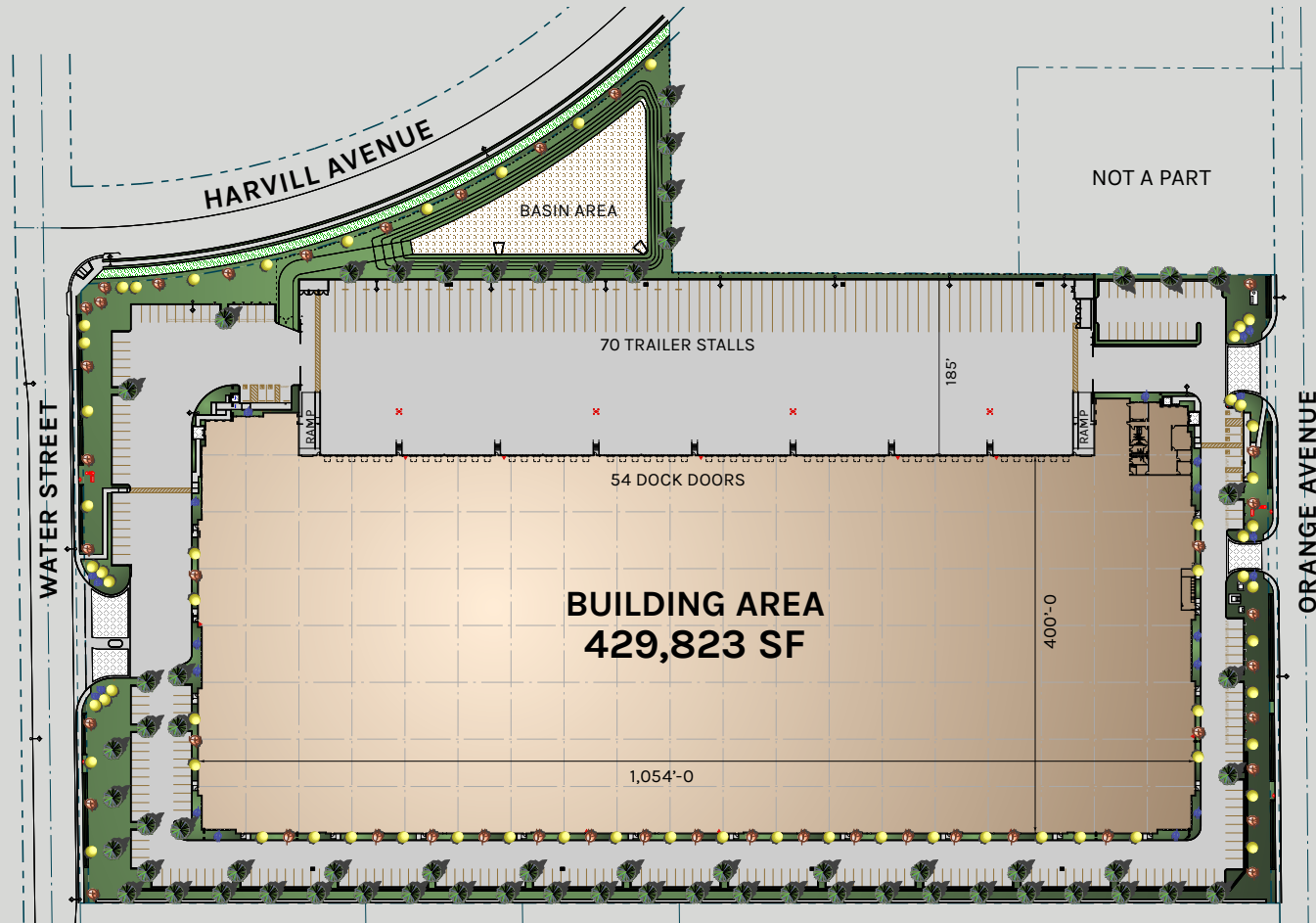
909 942 4647
tim.pimentel@cushwake.com
CA License #01421452

ANDREW STARNES

909 942 4667
andrew.starnes@cushwake.com
CA License #01799801

Property FEATURES

- 429,823 SF Warehouse Facility
- ±4,773 SF Office Area
- 40' Clear Height
- 54 Dock High / 2 Grade Level Doors
- 185' Truck Court
- 70 Trailer Stalls
- 247 Auto Parking
- ESRF (K-25) Sprinklers
- 4,000 amp UGPS (3,000 amp main switchboard)
- 2.5% Skylights
- Pursuing LEED Silver Certification



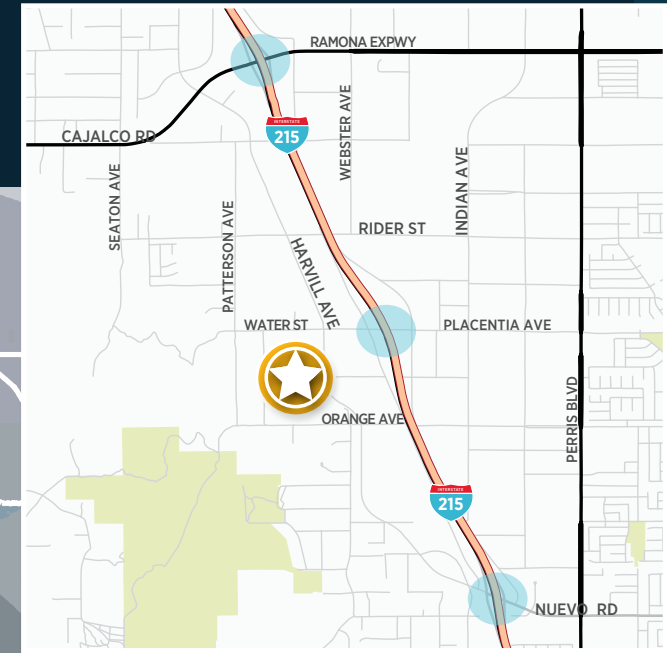
ARES
INDUSTRIAL
MANAGEMENT



NORTH

Location HIGHLIGHTS

- I-215 South Corridor Submarket
- Excellent Freeway Access via Placentia Ave and Nuevo Rd On/Off Ramps
- 12 miles to the I-215/SR-60 Interchange
- 30 miles to Ontario International Airport
- 72 miles to Ports of Los Angeles / Long Beach
- 78 miles to Los Angeles International Airport



HARVILL BUSINESS CENTER
 23784 ORANGE AVENUE, PERRIS, CA 92570



ABOUT ARES MANAGEMENT CORPORATION

Ares Management Corporation (NYSE: ARES) is a leading global alternative investment manager offering clients complementary primary and secondary investment solutions across the credit, private equity, real estate and infrastructure asset classes. We seek to provide flexible capital to support businesses and create value for our stakeholders and within our communities. By collaborating across our investment groups, we aim to generate consistent and attractive investment returns throughout market cycles. For more information, please visit www.aresgmt.com.



CHUCK BELDEN, SIOR

909 942 4640
chuck.belden@cushwake.com
CA License #00844840

PHIL LOMBARDO

909 942 4678
phil.lombardo@cushwake.com
CA License #00892477

TIM PIMENTEL, SIOR

909 942 4647
tim.pimentel@cushwake.com
CA License #01421452

ANDREW STARNES

909 942 4667
andrew.starnes@cushwake.com
CA License #01799801