



RIVER QUARRY

408 E PARKCENTER BLVD | BOISE, IDAHO

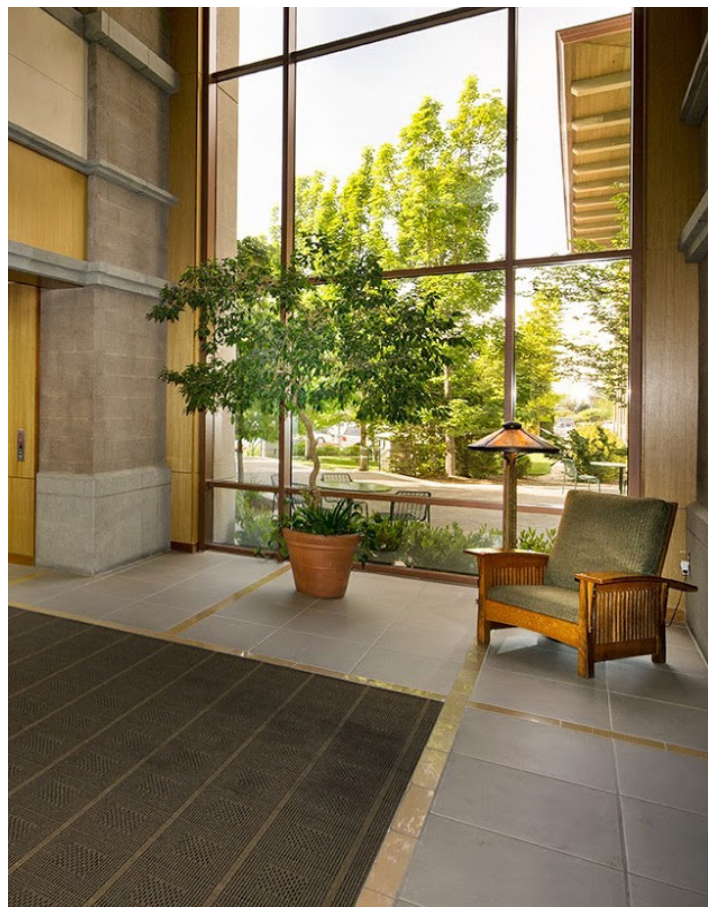
17,486 RSF FOR SUBLEASE
FULL THIRD FLOOR



 CUSHMAN &
WAKEFIELD

Property Highlights

Sublease Rate	\$24.00
Sublease Type	FSEJ
Sublease Term	7/31/29
Available Space	17,486 RSF - Full 3rd Floor
Furnished	Furniture Shown Included
Building Size	65,742 SF
Lot Size	3.76 Acres
Parking	On-Site Parking - Open/Shared
Zoning	City of Boise - L-OD
Parcel	#R6907070023
Lockbox	No Lockbox - Contact Agents

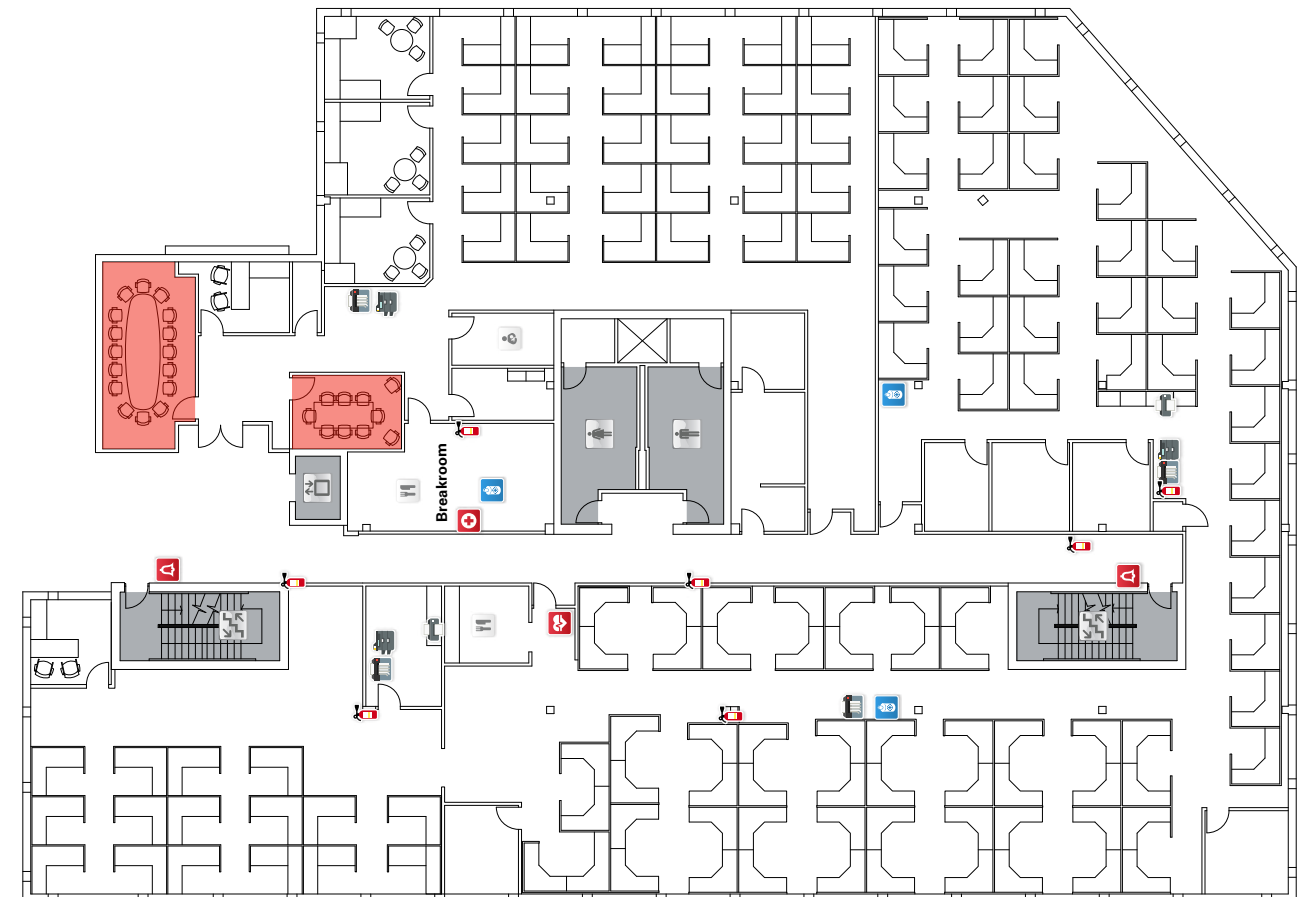


Listing Features

- Available space includes furniture shown, reception area, private offices, conference room, breakroom, and common area entry, restrooms and shared on-site parking for clients and staff
- Part of a nicely developed professional office park with quality landscaping and design, ideal location for a tenant looking to service Boise and it's surrounding areas - [Google 360 View](#)
- Near downtown Boise, SUPERVALU/Albertson's Corporate Office, BSU, numerous banks, restaurants including Red Robin and Barbacoa, DoubleTree and many other amenities
- Tenants can relax and enjoy the Loggers Pond & Boise Greenbelt on lunch hours, accessible by bike & Valley Regional Transit public bus system

Floor Plan

3rd Floor - 17,486 RSF



Jennifer McEntee

Senior Director
Office | Capital Markets
+1 208 287 9495
jennifer.mcentee@cushwake.com

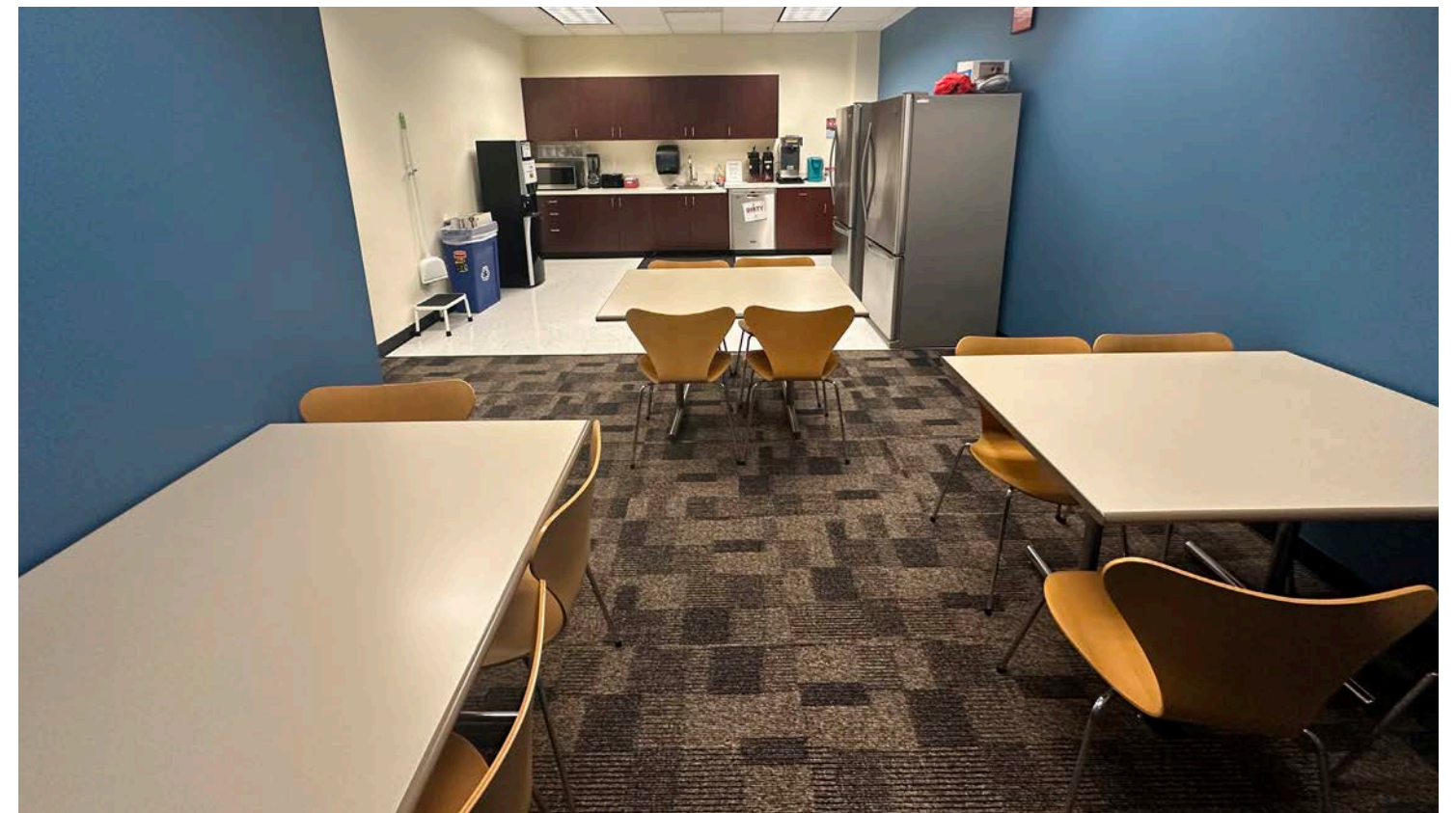
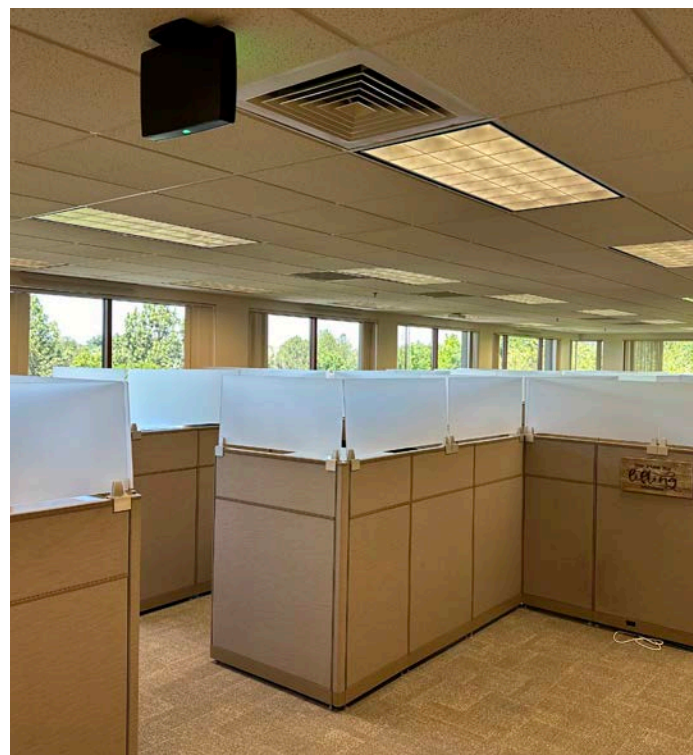
Bree Wells

Director
Office | Capital Markets
+1 208 287 9492
bree.wells@cushwake.com

Braydon Torres

Associate
Office | Capital Markets
+1 208 207 9485
braydon.torres@cushwake.com

Third Floor - Images

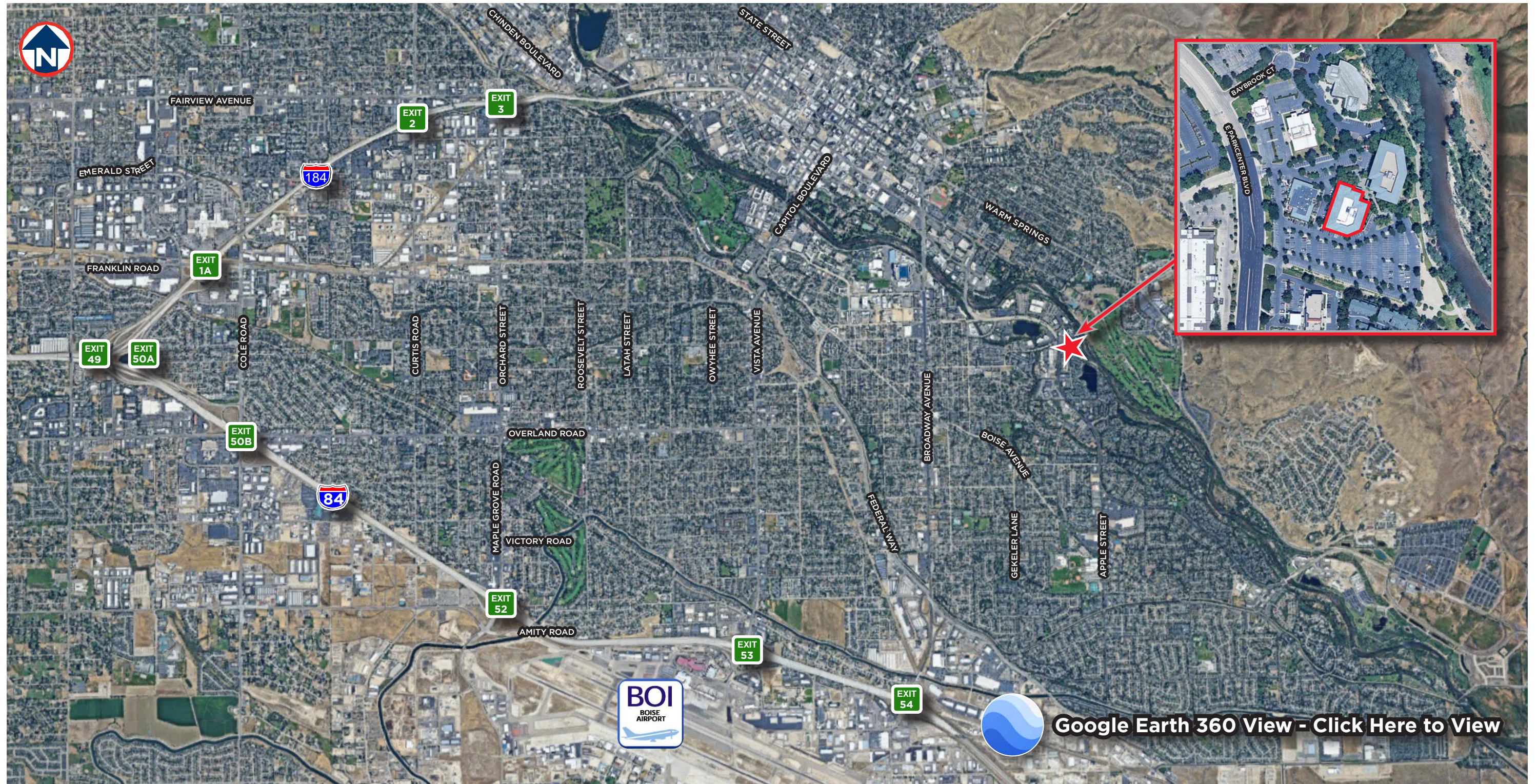


Jennifer McEntee
Senior Director
Office | Capital Markets
+1 208 287 9495
jennifer.mcentee@cushwake.com

Bree Wells
Director
Office | Capital Markets
+1 208 287 9492
bree.wells@cushwake.com

Braydon Torres
Associate
Office | Capital Markets
+1 208 207 9485
braydon.torres@cushwake.com

Property Location



Jennifer McEntee
Senior Director
Office | Capital Markets
+1 208 287 9495
jennifer.mcentee@cushwake.com

Bree Wells
Director
Office | Capital Markets
+1 208 287 9492
bree.wells@cushwake.com

Braydon Torres
Associate
Office | Capital Markets
+1 208 207 9485
braydon.torres@cushwake.com

RIVER QUARRY

408 E PARKCENTER BLVD | BOISE, IDAHO

17,468 RSF FOR SUBLEASE
FULL THIRD FLOOR

CONTACT

Jennifer McEntee

Senior Director
Office | Capital Markets
+1 208 287 9495
jennifer.mcentee@cushwake.com

Bree Wells

Director
Office | Capital Markets
+1 208 287 9492
bree.wells@cushwake.com

Braydon Torres

Associate
Office | Capital Markets
+1 208 207 9485
braydon.torres@cushwake.com

999 W Main Street, Suite 1300
Boise, ID 83702

cushmanwakefield.com

