

# 223

NORTH MATHILDA

SUNNYVALE

Located in Downtown Sunnyvale

±17,358 RSF – 2<sup>nd</sup> Floor

±17,312 RSF – 3<sup>rd</sup> Floor

For Sublease



# 223

NORTH MATHILDA

SUNNYVALE

## highlights

- ±17,358 RSF – 2<sup>nd</sup> Floor
- ±17,312 RSF – 3<sup>rd</sup> Floor
- New Fully Built-Out Interiors
- Plug & Play; Furnished
- Available Now!
- 2 - 5 year sublease term
- Located within walking distance to Caltrain



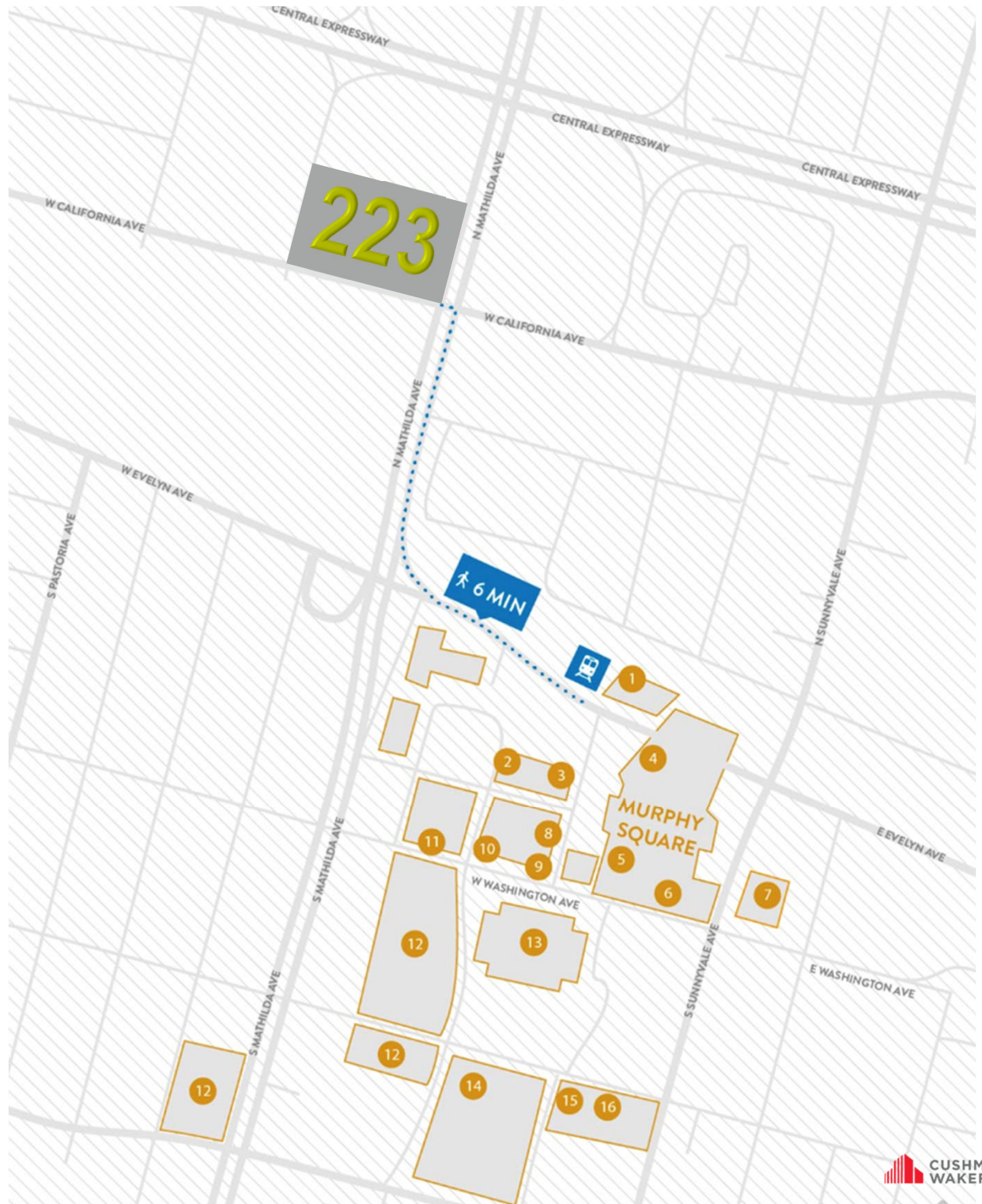
# 223

NORTH MATHILDA

SUNNYVALE

## location

1. Caltrain Sunnyvale Station
2. Loft House Apartments
3. Philz Coffee
4. Firehouse Grill & Brewery
5. Tao Tao
6. Dishdash
7. Aloft Sunnyvale
8. Orangetheory Fitness
9. Starbucks
10. Solstice Apartment Houses
11. Flywheel Sports
12. New For Rent Apartments
13. Macy's
14. Target
15. Whole Foods
16. Movie Theatre

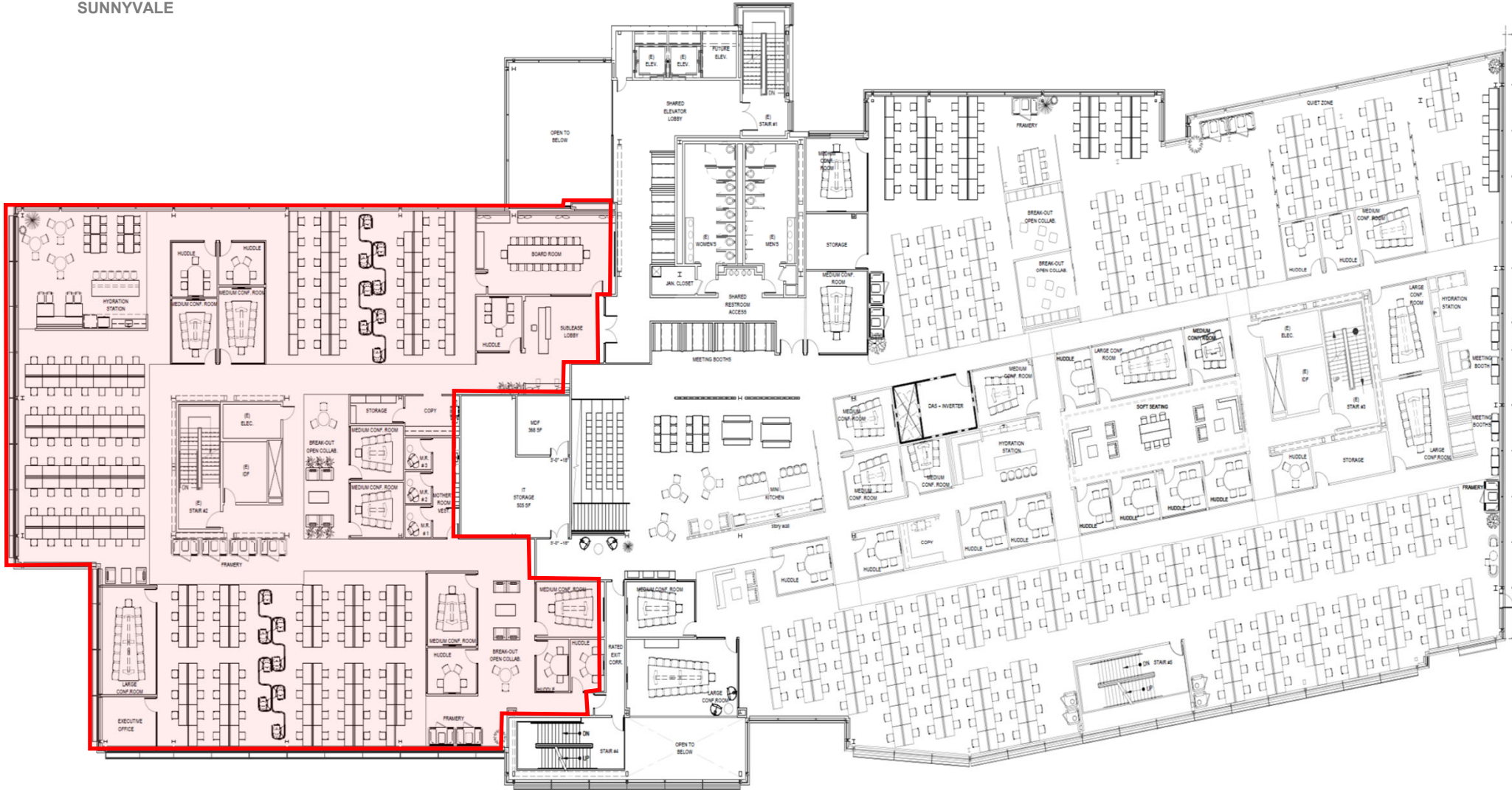


# 223

NORTH MATHILDA

SUNNYVALE

±17,358 RSF – 2<sup>nd</sup> Floor

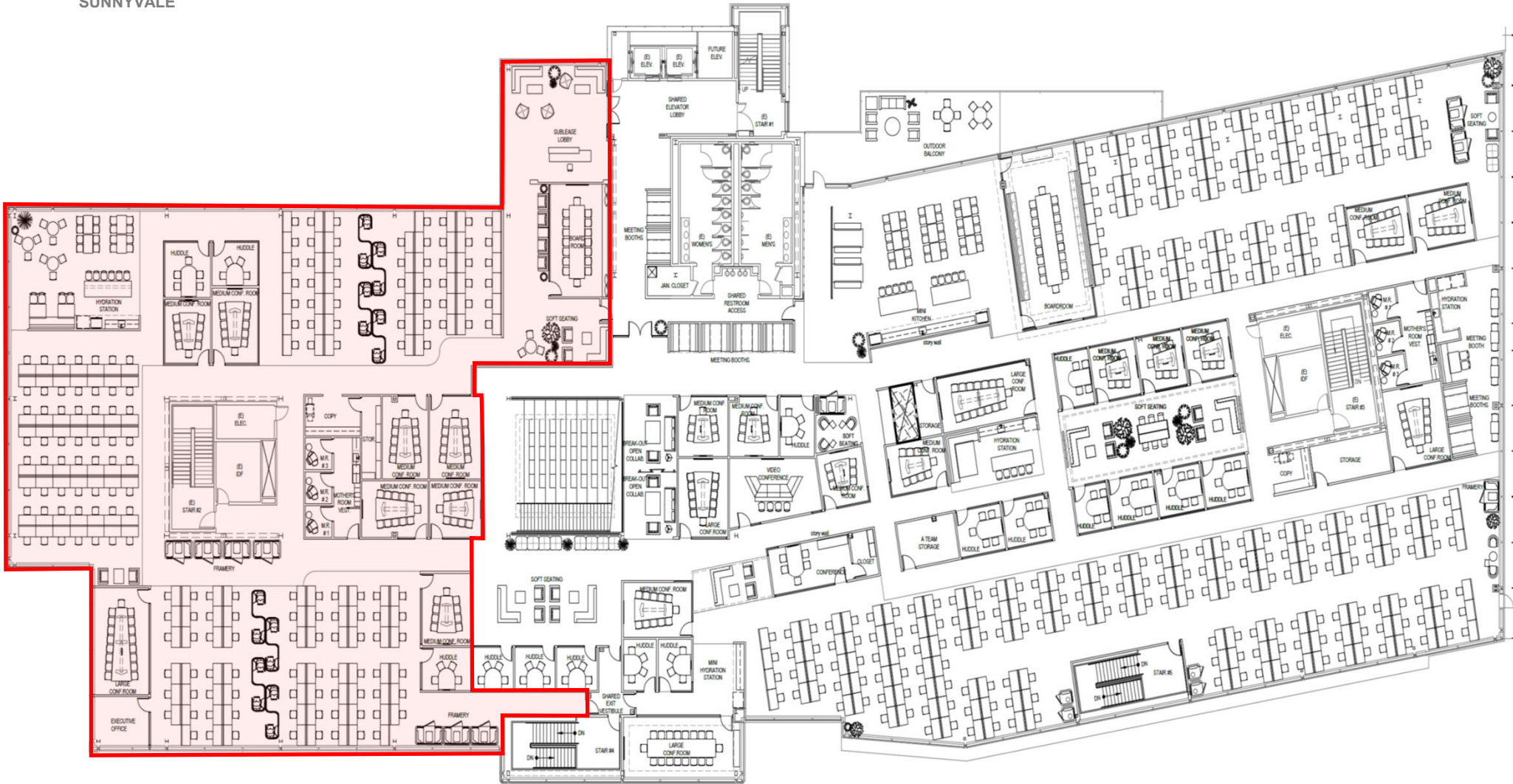


# 223

NORTH MATHILDA

SUNNYVALE

±17,312 RSF – 3<sup>rd</sup> Floor



# 223

NORTH MATHILDA

SUNNYVALE

For more information, please contact:

**Julie Golino**

Associate

+1 408 572 4153

[julie.golino@cushwake.com](mailto:julie.golino@cushwake.com)

Lic. #01392415

**Roger Gage**

Executive Managing Director

+1 408 718 9861

[roger.gage@cushwake.com](mailto:roger.gage@cushwake.com)

Lic. #01153662

**David Hiebert**

Managing Principal

+1 650 320 0250

[david.hiebert@cushwake.com](mailto:david.hiebert@cushwake.com)

Lic. #01189320



300 Santana Row, Fifth Floor  
San Jose, California 95128  
Main +1 408 615 3400  
[www.cushmanwakefield.com](http://www.cushmanwakefield.com)

