

FOR LEASE/SALE

# The Vineyard

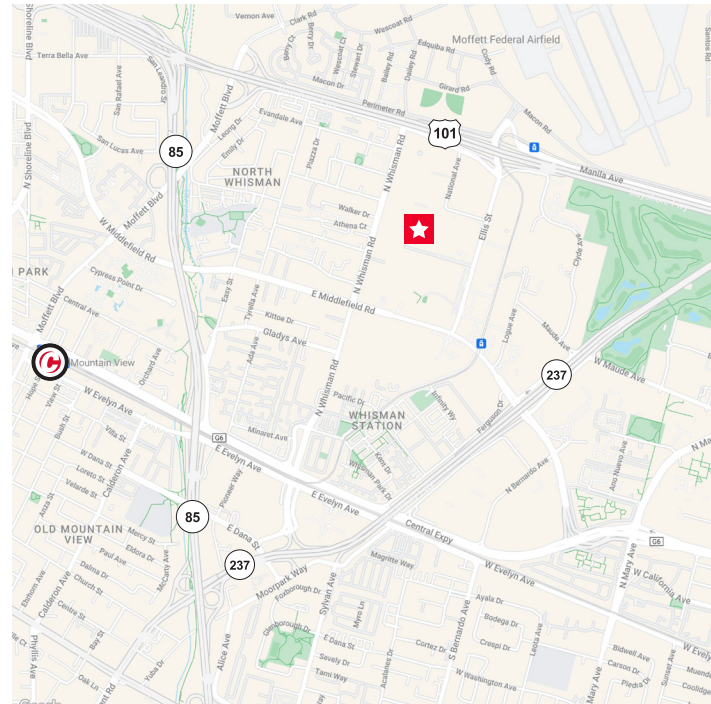
455 N Whisman Road, Mountain View, CA

SUITE 200: ±2,548 SF



## PROPERTY HIGHLIGHTS

- Class A Office/R&D Condo
- 5 Private Offices, 1 Conference Room
- In-Suite Restrooms & Kitchen
- Potential Roll-up Door access
- Lots of windows & light; front & rear entrances
- Green is Good: Solar on Roof
- Fiber Into Building; Server Rack in Place
- Optional: Complete Office Furniture & Kitchen Appliances
- Optional: Adjacent 1275 SF Suite is Available
- Outside Lunch Area & Restaurant On-site
- Short Walk to the Middlefield Light Rail & Hetch Hetchy Trail
- Easy Access to HWY 101, 85, 237 & Public Transportation
- Five Minutes to Downtown Mountain View
- Lots of Parking
- Call Today to Tour the Space



**CUSHMAN &  
WAKEFIELD**

cushmanwakefield.com

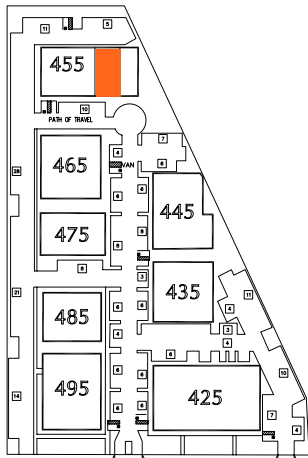
# The Vineyard

455 N Whisman Road, Mountain View, CA

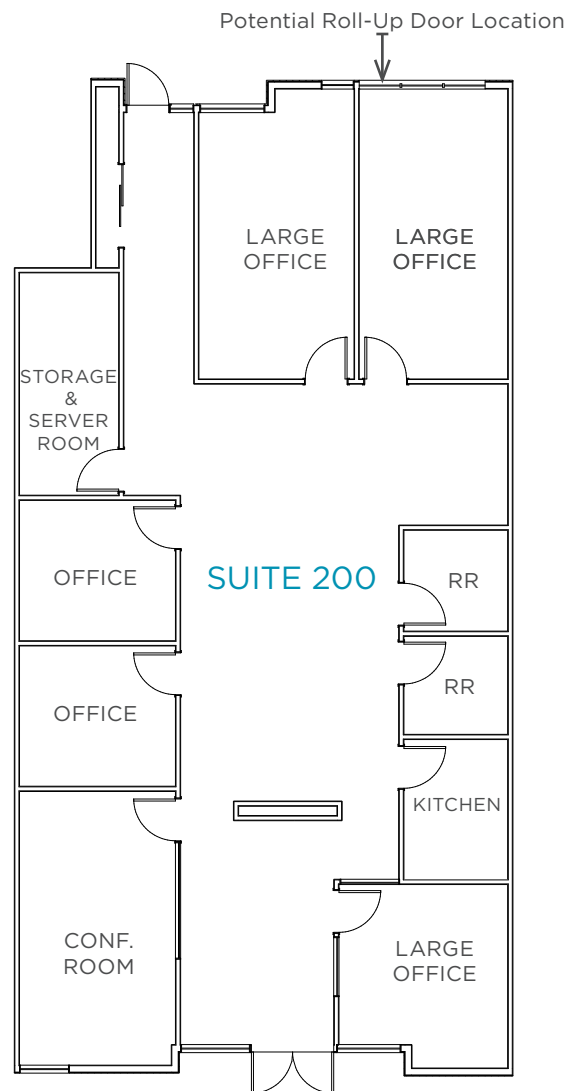
SUITE 200: ±2,548 SF

FOR LEASE/SALE

## FLOOR PLAN



N WHISMAN ROAD



**CUSHMAN &  
WAKEFIELD**

[cushmanwakefield.com](http://cushmanwakefield.com)

# The Vineyard

455 N Whisman Road, Mountain View, CA

SUITE 200: ±2,548 SF

FOR LEASE/SALE

## PROPERTY PHOTOS



### STEVEN ALI JENAB

Director

+1 408 718 1804

[steven.jenab@cushwake.com](mailto:steven.jenab@cushwake.com)

LIC #02085072

### KALIL JENAB

Vice Chairman

+1 408 810 3428

[kalil.jenab@cushwake.com](mailto:kalil.jenab@cushwake.com)

LIC #00848988

525 University Ave., Suite 220

Palo Alto, CA 94301

Main +1 650 852 1200

Fax +1 650 856 1098

[cushmanwakefield.com](http://cushmanwakefield.com)



**CUSHMAN &  
WAKEFIELD**

[cushmanwakefield.com](http://cushmanwakefield.com)