

# 210 & 230 WEST TASMAN DRIVE

SAN JOSE, CALIFORNIA



**FOR SUBLEASE | ±47,969 - 191,423 SF | \$2.25 NNN**

FOR MORE INFORMATION PLEASE CONTACT:

**CHRIS D'AMBROSIA**  
Executive Director

Lic. #01363795  
(408) 572 4127  
chris.dambrosia@cushwake.com

**JEFF CUSHMAN**  
Vice Chairman

Lic.#01308295  
(917) 575 4722  
jeff.cushman@cushwake.com





# 210 & 230 WEST TASMAN DRIVE

SAN JOSE, CALIFORNIA

## PROPERTY HIGHLIGHTS



- 210 W. Tasman Dr: 95,939 SF
- 230 W. Tasman Dr: 95,484 SF
- 2 Buildings Connected by Exclusive Outdoor Amenity Area
- Interior Build-Out With FF&E Available
- 3,000 Amps Per Building
- 3.25/1,000 Parking
- Multiple Sized Labs in 230 W. Tasman
- 2 Docks and 3 Grade Level Loading in 230 W. Tasman
- Full Cafeteria (With Hood), Gym, All Hands Room, Executive Business Center, Showers/Lockers, and Outdoor Amenity Area With BBQ
- LED: September 2026

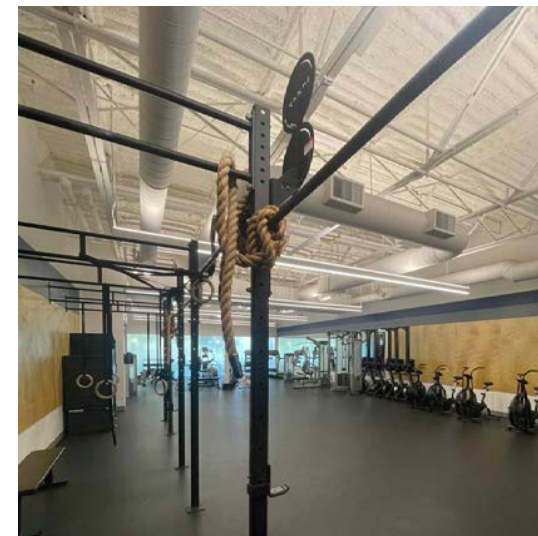
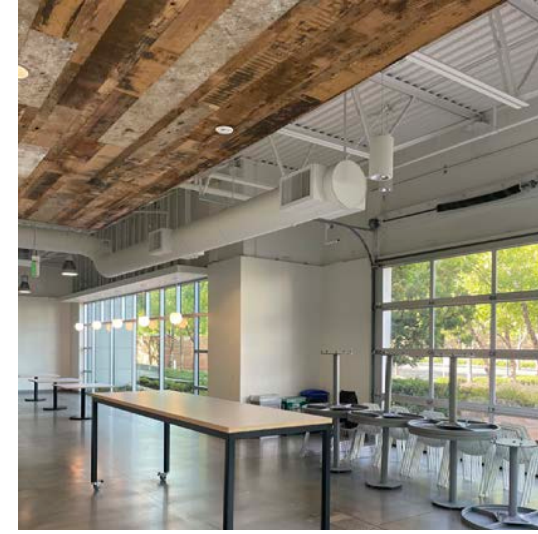




# 210 WEST TASMAN DRIVE

SAN JOSE, CALIFORNIA

## PROPERTY PHOTOS

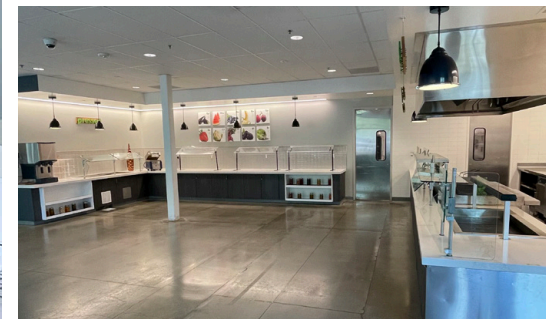
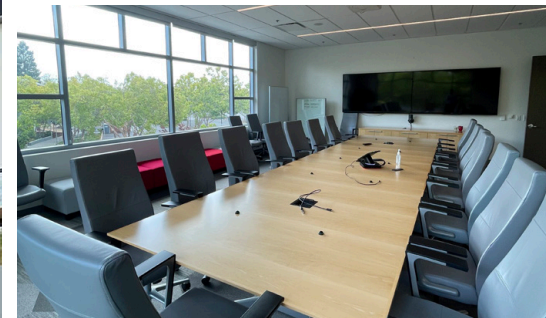




# 230 WEST TASMAN DRIVE

SAN JOSE, CALIFORNIA

## PROPERTY PHOTOS





# 210 & 230 WEST TASMAN DRIVE

SAN JOSE, CALIFORNIA

## AMENITIES MAP



FAIRFIELD INN & SUITES  
RESIDENCE INN MARRIOTT

EXTENDED STAY AMERICA

TOP GOLF

ALOFT SANTA CLARA

1 MILE FROM LEVI'S  
STADIUM AND RELATED'S  
9+ MSF MIXED-USE PROJECT

MIKAYLA'S CAFE

CARL'S JR

230  
W TASMAN DR

210  
W TASMAN DR

PANERA  
FIVE GUYS  
CHIPOTLE  
CHICK-FIL-A  
ROK  
STARBUCKS  
FISH'S WILD  
SHAN TANDOORI PIZZA  
SAJJ MEDITERRANEAN  
HYATT HOUSE  
COURTYARD MARRIOTT  
TARGET  
CVS

STADIUM  
TECH CAFE

TACO BELL  
JOE'S CHINESE  
GOLKONDA  
INDIAN CUISINE  
CHICK'NCONE  
BAWARCHI  
TOGO'S

TRUYA SUSHI  
EVOLUTION  
CAFE & BAR  
HYATT REGENCY

GREAT AMERICA PARKWAY

MARRIOTT  
PARCEL 104

BOURBON STEAK

LEVI'S STADIUM

HILTON  
LA FONTANA

CAFE FALAFEL  
HOUSE OF BAGELS  
IGUANAS  
ROUND TABLE PIZZA  
TOGO'S

LALLA GRILL  
SALAD FARM  
INCHINS BAMBOO GARDEN  
STARBUCKS  
PEET'S COFFEE  
RED ROBIN  
PIATTI  
EASTERLY SANTA CLARA  
JERSEY MIKE'S SUBS

PREMIER PIZZA  
COLD STONE CREAMERY  
CHIPOTLE MEXICAN GRILL  
MEET FRESH SANTA CLARA  
BELLRYRUB  
FANTASIA COFFEE & TEA  
THE KEBAB SHOP  
HYATT HOUSE  
SAFEWAY

IN-N-OUT  
TOMATINA  
SUBWAY  
PANDA EXPRESS  
MEXICAN GRILL  
JAMBA JUICE  
STARBUCKS  
SMOKEEATERS  
KRISPY KREME  
WORLD WRAPPS

KEY





# 210 & 230 WEST TASMAN DRIVE

SAN JOSE, CALIFORNIA

## TRANSIT MAP



ACE TRAIN	— — — — —
VTA LIGHT RAIL	— — — — —
CALTRAIN SHUTTLE	— — — — —
ACE TRAIN SHUTTLE	— — — — —

DRIVE TIMES (AT 5:00 PM):	
HIGHWAY 237	4 MINUTES
HIGHWAY 101	10 MINUTES
HIGHWAY 880	10 MINUTES
MILPITAS BART STATION	12 MINUTES
SAN JOSE AIRPORT	14 MINUTES



# 210 WEST TASMAN DRIVE

## SAN JOSE, CALIFORNIA

FIRST FLOOR: ±47,969 RSF

- 121 Cubicles 8x8
- 29 Offices
- 10 Conference Rooms



CLICK HERE FOR  
VIRTUAL  
**360°**  
TOUR

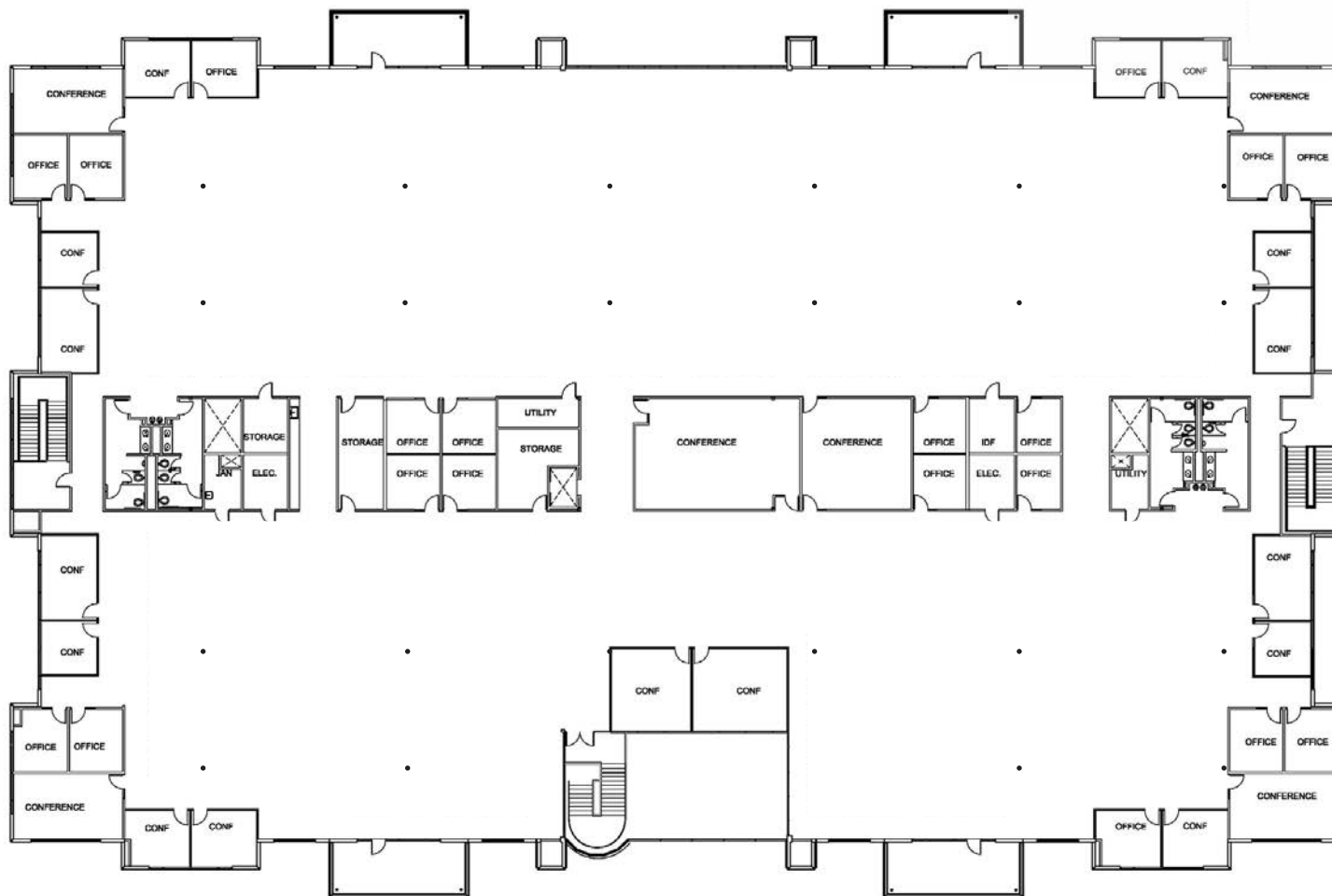


# 210 WEST TASMAN DRIVE

## SAN JOSE, CALIFORNIA

SECOND FLOOR: ±47,969 RSF

- 19 Offices
- 21 Conference Rooms



CLICK HERE FOR  
VIRTUAL  
**360°**  
TOUR



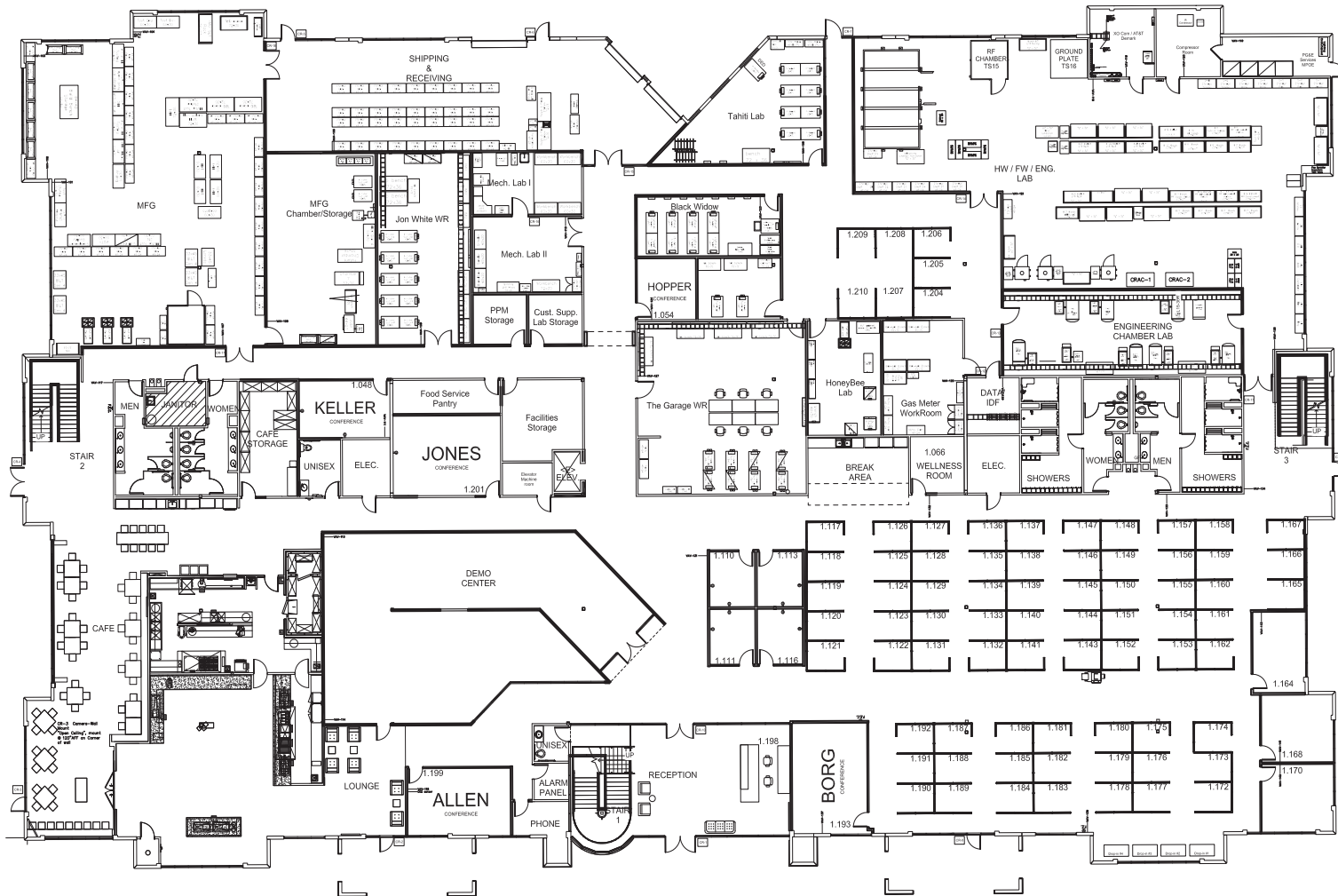


# 230 WEST TASMAN DRIVE

## SAN JOSE, CALIFORNIA

FIRST FLOOR: ±47,742 RSF

- 75 Cubicles (8x8)
- 7 Offices
- 5 Conference Rooms



CLICK HERE FOR  
VIRTUAL  
**360°**  
TOUR





# 230 WEST TASMAN DRIVE

## SAN JOSE, CALIFORNIA

SECOND FLOOR: ±47,742 RSF

- 228 Cubicles (8x8)
- 35 Offices
- 10 Conference Rooms



CLICK HERE FOR  
VIRTUAL  
**360°**  
TOUR







Cushman & Wakefield  
300 Santana Row, Fifth Floor  
San Jose, CA 95128

## CONTACTS

**CHRIS D'AMBROSIA**  
Executive Director

Lic. #01363795  
(408) 572 4127  
chris.dambrosia@cushwake.com

**JEFF CUSHMAN**  
Vice Chairman

Lic.#01308295  
(917) 575 4722  
jeff.cushman@cushwake.com



©2020 Cushman & Wakefield. All rights reserved. The information contained in this communication is strictly confidential. This information has been obtained from sources believed to be reliable but has not been verified. NO WARRANTY OR REPRESENTATION, EXPRESS OR IMPLIED, IS MADE AS TO THE CONDITION OF THE PROPERTY (OR PROPERTIES) REFERENCED HEREIN OR AS TO THE ACCURACY OR COMPLETENESS OF THE INFORMATION CONTAINED HEREIN, AND SAME IS SUBMITTED SUBJECT TO ERRORS, OMISSIONS, CHANGE OF PRICE, RENTAL OR OTHER CONDITIONS, WITHDRAWAL WITHOUT NOTICE, AND TO ANY SPECIAL LISTING CONDITIONS IMPOSED BY THE PROPERTY OWNER(S). ANY PROJECTIONS, OPINIONS OR ESTIMATES ARE SUBJECT TO UNCERTAINTY AND DO NOT SIGNIFY CURRENT OR FUTURE PROPERTY PERFORMANCE.