

FOR SUBLEASE

975 S CALIFORNIA AVENUE

Palo Alto, California



FULL BUILDING ±54,229 RSF

For more information, please contact:

Greg Pickett
Vice Chairman
+1 650 320 0226
greg.pickett@cushwake.com
Lic #01846327

Jed Springer
Director
+1 650 320 0210
jed.springer@cushwake.com
Lic #02012629

Aaron Wright
Executive Managing Director
+1 415 606 6104
aaron.wright@cushwake.com
Lic # 01341256

Hope Day
Director
+1 415 342 8979
hope.day@cushwake.com
Lic #01954509

cushmanwakefield.com

©2024 Cushman & Wakefield. All rights reserved. This information has been obtained from sources believe to be reliable but has not been verified. NO WARRANTY OR REPRESENTATION, EXPRESS OR IMPLIED, IS MADE AS TO THE CONDITION OF THE PROPERTY (OR PROPERTIES) REFERENCED HEREIN OR AS TO THE ACCURACY OR COMPLETENESS OF THE INFORMATION CONTAINED HEREIN, AND SAME IS SUBMITTED SUBJECT TO ERRORS, OMISSIONS, CHANGE OF PRICE, RENTAL OR OTHER CONDITIONS, WITHDRAWAL WITHOUT NOTICE, AND TO ANY SPECIAL LISTING CONDITIONS IMPOSED BY THE PROPERTY OWNER(S). ANY PROJECTIONS, OPINIONS OR ESTIMATES ARE SUBJECT TO UNCERTAINTY AND DO NOT SIGNIFY CURRENT OR FUTURE PROPERTY PERFORMANCE.

FOR SUBLEASE

975 S CALIFORNIA AVENUE

Palo Alto, California



SPACE HIGHLIGHTS

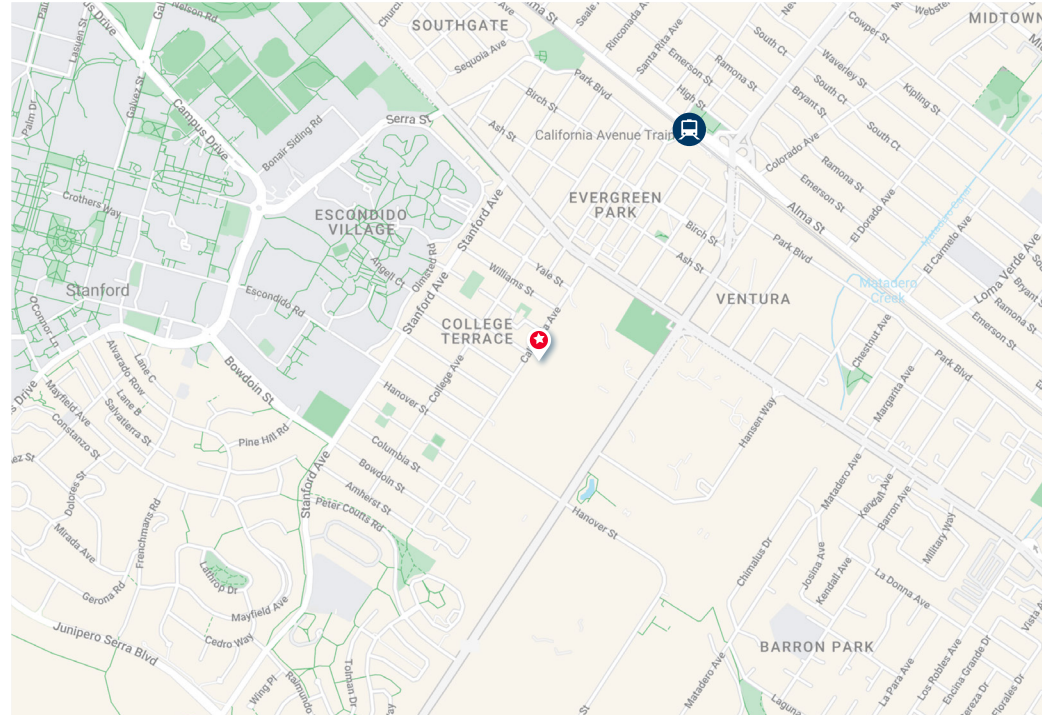
RSF: ±54,229

Term: Through July 2030

Availability: 30-60 days



- Full building identity
- Fully furnished with sit/stand workstations
- Monument signage
- Large kitchens & all hands spaces
- High end bathrooms
- Showers, locker rooms, & a fitness room
- Great mix of conference rooms & open spaces
- Training room
- 2 Roll-up doors



BUILDING HIGHLIGHTS

- Large outdoor patio
- Walking distance to Caltrain
- Stanford Research Park location
- Car parking & electric charging stations

For more information, please contact:

Greg Pickett
Vice Chairman
+1 650 320 0226
greg.pickett@cushwake.com
Lic #01846327

Jed Springer
Director
+1 650 320 0210
jed.springer@cushwake.com
Lic #02012629

Aaron Wright
Executive Managing Director
+1 415 606 6104
aaron.wright@cushwake.com
Lic # 01341256

Hope Day
Director
+1 415 342 8979
hope.day@cushwake.com
Lic #01954509

cushmanwakefield.com

FOR SUBLEASE

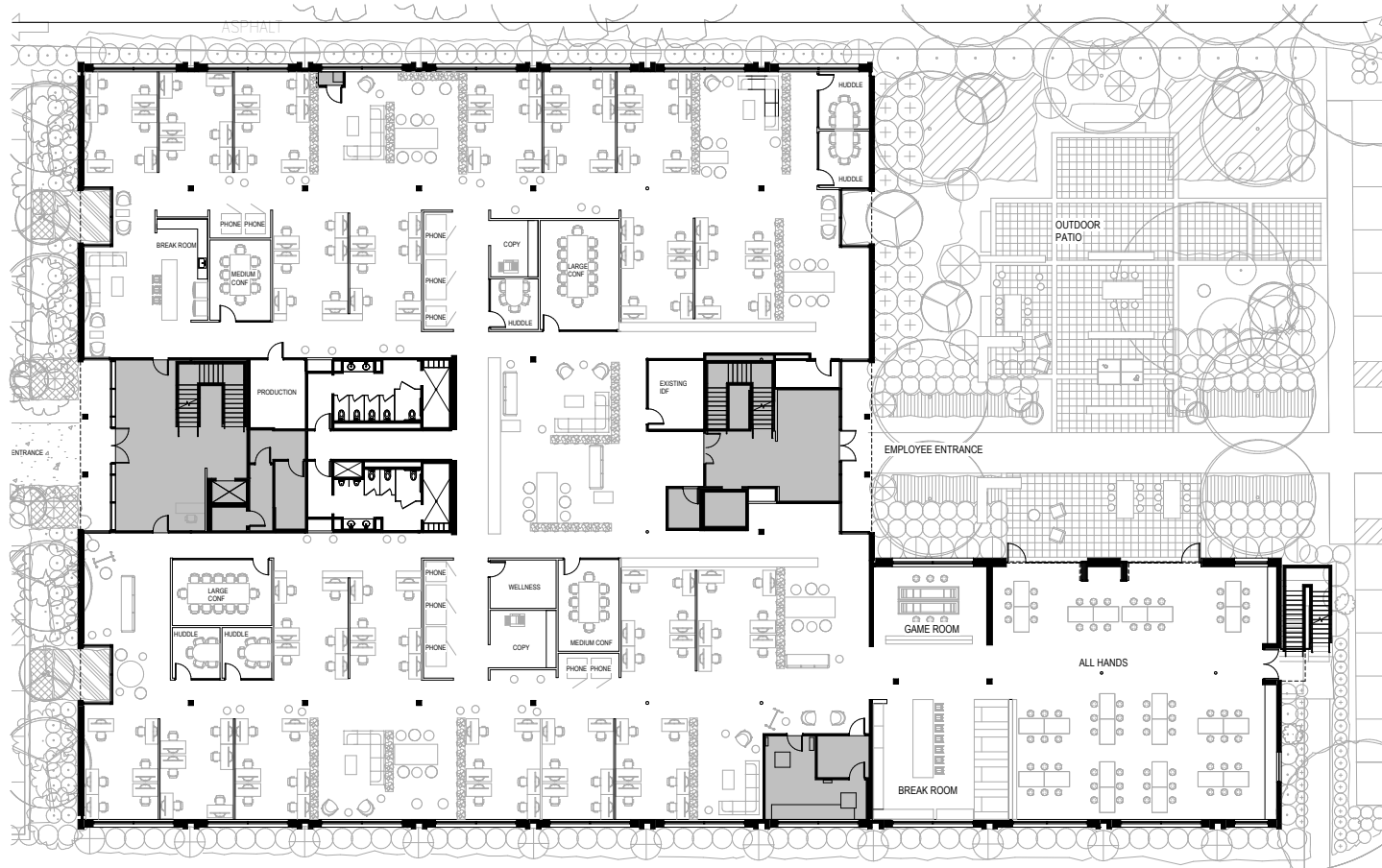
975 S CALIFORNIA AVENUE

Palo Alto, California



FLOORPLAN

1 st Floor: ±27,114 RSF



Floor plan not to scale

For more information, please contact:

Greg Pickett
Vice Chairman
+1 650 320 0226
greg.pickett@cushwake.com
Lic #01846327

Jed Springer
Director
+1 650 320 0210
jed.springer@cushwake.com
Lic #02012629

Aaron Wright
Executive Managing Director
+1 415 606 6104
aaron.wright@cushwake.com
Lic # 01341256

Hope Day
Director
+1 415 342 8979
hope.day@cushwake.com
Lic #01954509

cushmanwakefield.com

FOR SUBLEASE

975 S CALIFORNIA AVENUE

Palo Alto, California



INTERIOR PHOTOS

1st Floor: ±27,114 RSF



FOR SUBLEASE

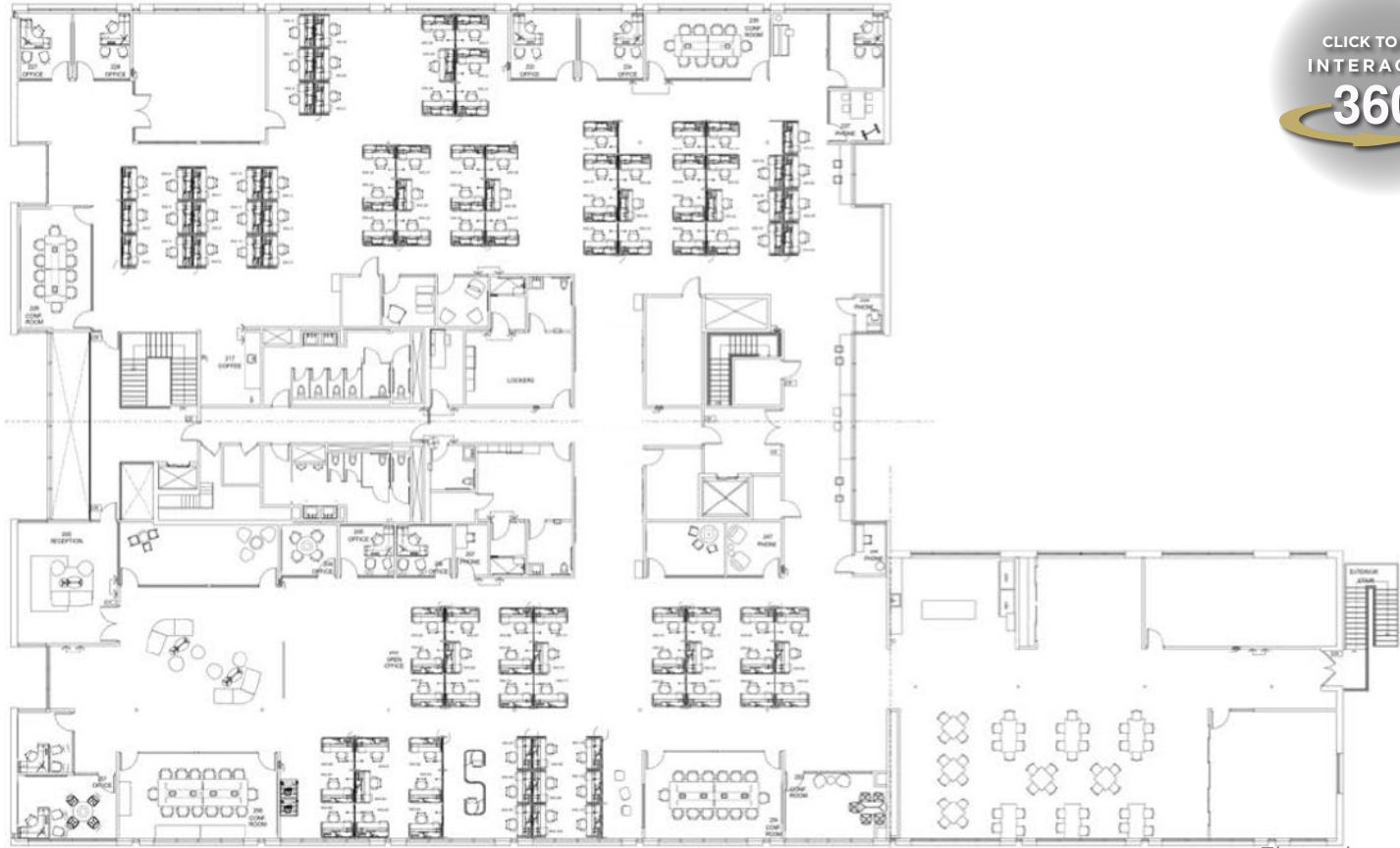
975 S CALIFORNIA AVENUE

Palo Alto, California



FLOORPLAN

2nd Floor: ±27,115 RSF



Floor plan not to scale

For more information, please contact:

Greg Pickett
Vice Chairman
+1 650 320 0226
greg.pickett@cushwake.com
Lic #01846327

Jed Springer
Director
+1 650 320 0210
jed.springer@cushwake.com
Lic #02012629

Aaron Wright
Executive Managing Director
+1 415 606 6104
aaron.wright@cushwake.com
Lic # 01341256

Hope Day
Director
+1 415 342 8979
hope.day@cushwake.com
Lic #01954509

cushmanwakefield.com

FOR SUBLEASE

975 S CALIFORNIA AVENUE

Palo Alto, California



INTERIOR PHOTOS

2nd Floor: ±27,115 RSF

