

FOR SUBLEASE

975 S. California Avenue, Palo Alto, CA

±27,115 RSF



CLICK TO VIEW
INTERACTIVE
360°
TOUR

\$2.95 NNN

*FOR SHORT TERM DEALS

For more information, please contact:

Greg Pickett
Vice Chairman
+1 650 320 0226
greg.pickett@cushwake.com
Lic #01846327

Jed Springer
Director
+1 650 320 0210
jed.springer@cushwake.com
Lic #02012629

Aaron Wright
Executive Managing Director
+1 415 606 6104
aaron.wright@cushwake.com
Lic # 01341256

Hope Day
Director
+1 415 342 8979
hope.day@cushwake.com
Lic #01954509

cushmanwakefield.com

©2022 Cushman & Wakefield. All rights reserved. The information contained in this communication is strictly confidential. This information has been obtained from sources believed to be reliable but has not been verified. No warranty or representation, express or implied, is made as to the condition of the property (or properties) referenced herein or as to the accuracy or completeness of the information contained herein, and same is submitted subject to errors, omissions, change of price, rental or other conditions, withdrawal without notice, and to any special listing conditions imposed by the property owner(s). Any projections, opinions or estimates are subject to uncertainty and do not signify current or future property performance.

FOR SUBLEASE

975 S. California Avenue, Palo Alto, CA

±27,115 RSF



Space Highlights

RSF: ±27,115

Floor: 2nd

Availability: 30-60 days

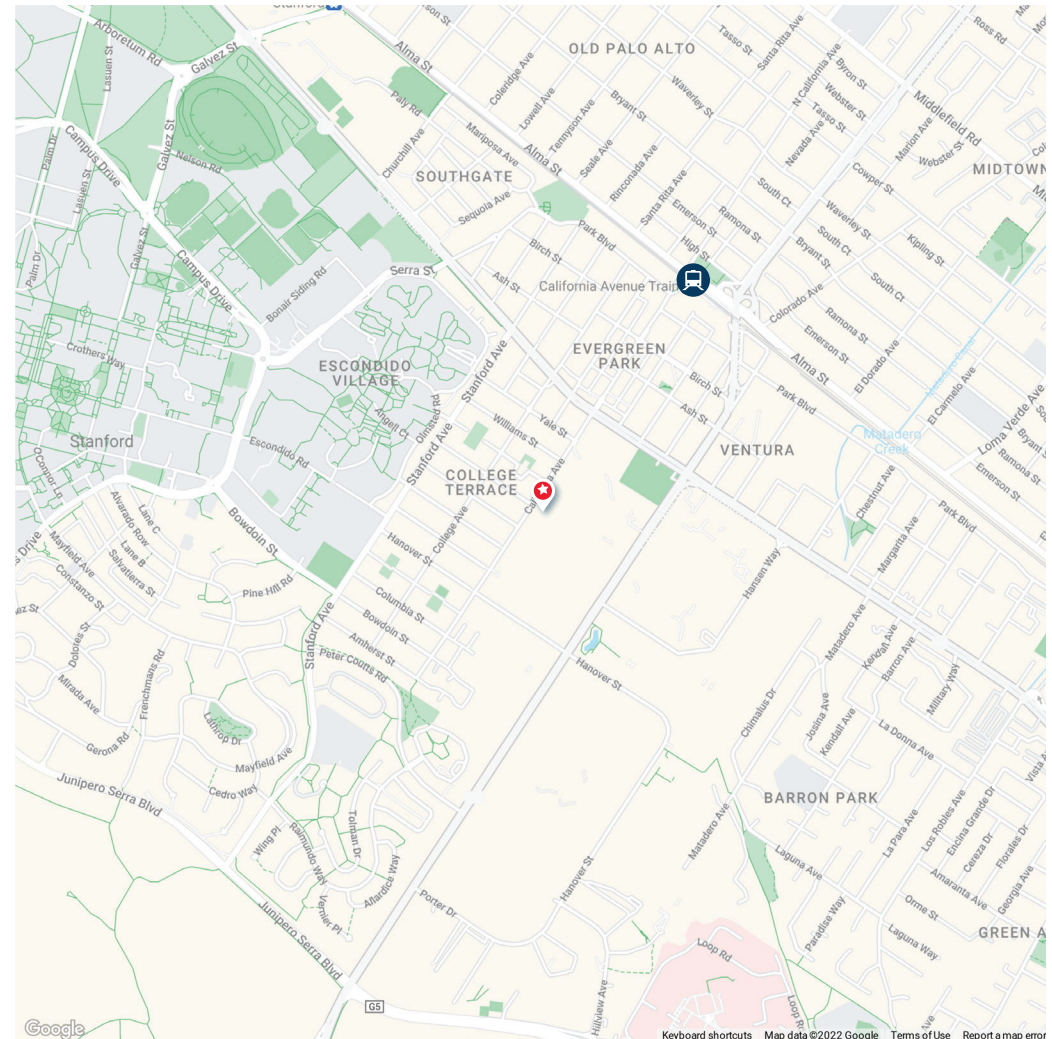
Rate: Please inquire

Term: Flexible term available through July 2030

- Full 2nd floor
- Fully furnished with sit/stand workstations
- Large kitchen & all hands space
- Gender neutral restrooms
- Showers, locker rooms, & a yoga room
- 4 large conference rooms
- 15 medium/small meeting rooms
- Training room
- Shared boardroom on 2nd floor

Building Highlights

- Large outdoor patio
- Stanford Research Park location
- Walking distance to Caltrain
- Car parking & electric charging stations



For more information, please contact:

Greg Pickett
Vice Chairman
+1 650 320 0226
greg.pickett@cushwake.com
Lic #01846327

Jed Springer
Director
+1 650 320 0210
jed.springer@cushwake.com
Lic #02012629

Aaron Wright
Executive Managing Director
+1 415 606 6104
aaron.wright@cushwake.com
Lic # 01341256

Hope Day
Director
+1 415 342 8979
hope.day@cushwake.com
Lic #01954509

cushmanwakefield.com

FOR SUBLEASE

975 S. California Avenue, Palo Alto, CA

±27,115 RSF



Floorplan



Floor plan not to scale

For more information, please contact:

Greg Pickett
Vice Chairman
+1 650 320 0226
greg.pickett@cushwake.com
Lic #01846327

Jed Springer
Director
+1 650 320 0210
jed.springer@cushwake.com
Lic #02012629

Aaron Wright
Executive Managing Director
+1 415 606 6104
aaron.wright@cushwake.com
Lic # 01341256

Hope Day
Director
+1 415 342 8979
hope.day@cushwake.com
Lic #01954509

cushmanwakefield.com

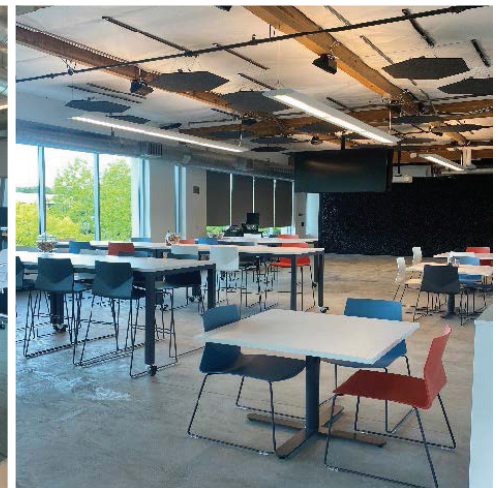
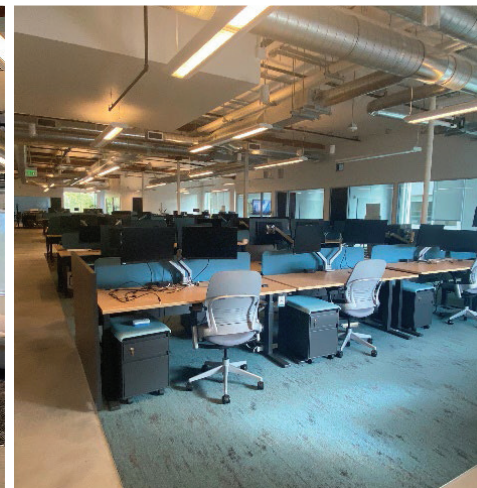
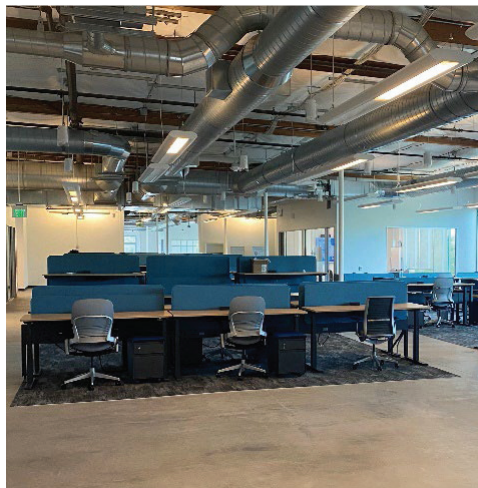
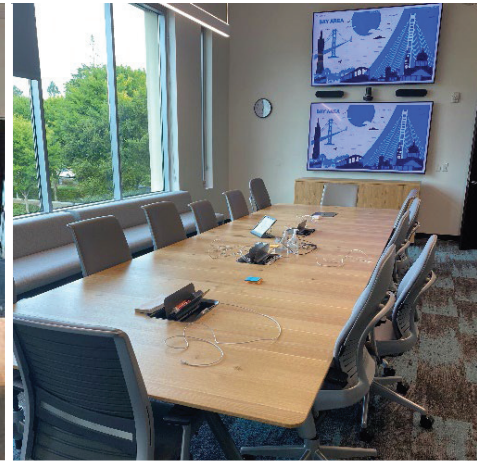
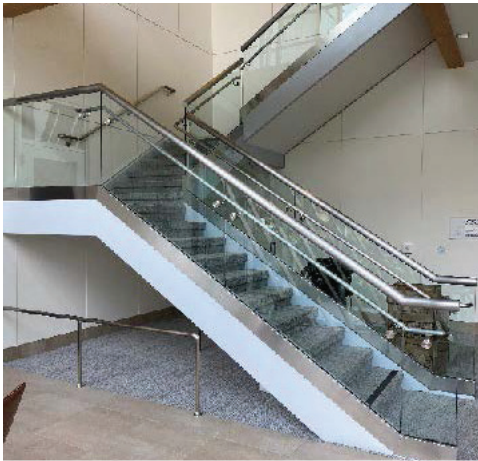
FOR SUBLEASE

975 S. California Avenue, Palo Alto, CA

±27,115 RSF



2nd Floor Photos



For more information, please contact:

Greg Pickett
Vice Chairman
+1 650 320 0226
greg.pickett@cushwake.com
Lic #01846327

Jed Springer
Director
+1 650 320 0210
jed.springer@cushwake.com
Lic #02012629

Aaron Wright
Executive Managing Director
+1 415 606 6104
aaron.wright@cushwake.com
Lic # 01341256

Hope Day
Director
+1 415 342 8979
hope.day@cushwake.com
Lic #01954509

cushmanwakefield.com