

CONSTRUCTION WILL COMMENCE NOVEMBER 2023
FOR LEASE ±60,000 SF CLASS A+ OFFICE BUILDING
LOCATED IN DOWNTOWN MOUNTAIN VIEW

151

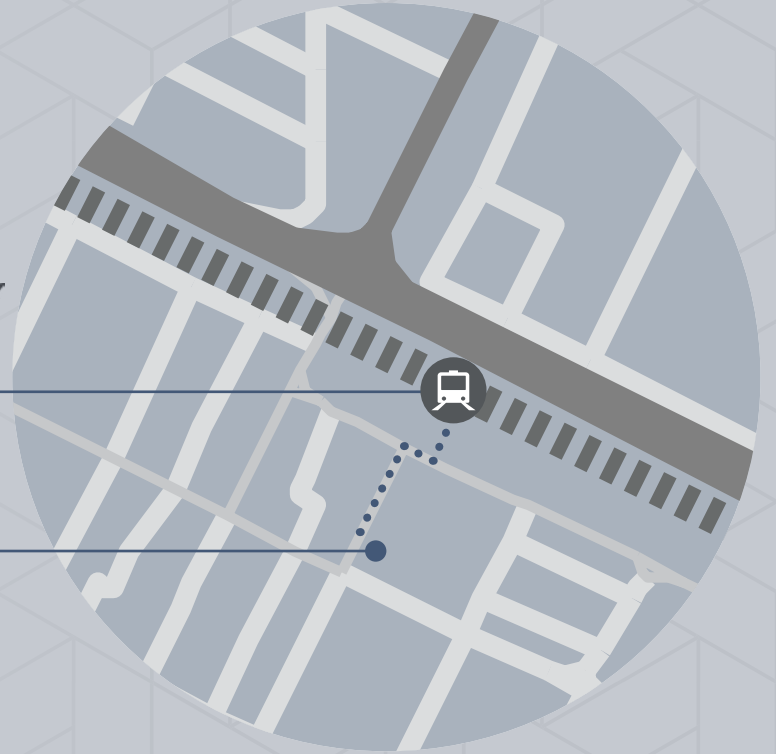
HOPE STREET
MOUNTAIN VIEW | CA



CUSHMAN &
WAKEFIELD

HIGHLIGHTS

- Construction Starting Nov 2023
- ±60,000 square foot four story building
- New A+ construction
- Steps away from Caltrain, Light Rail, and Mountain View Transit Center
- Adjacent to a brand new 150 Hope Street Boutique Lifestyle Hotel property
- Located in the heart of Downtown Mountain View within walking distance to countless downtown amenities
- Easy access to highways 101, 85, 237, 280, and Central Expressway
- 3 levels of underground parking



CONNECTIVITY

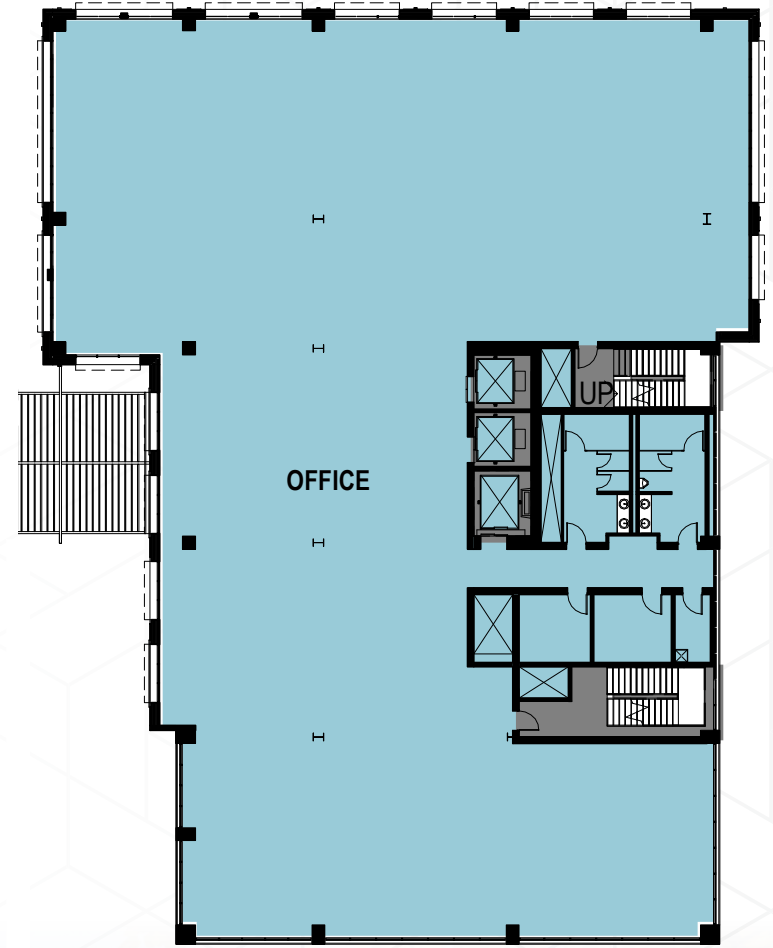
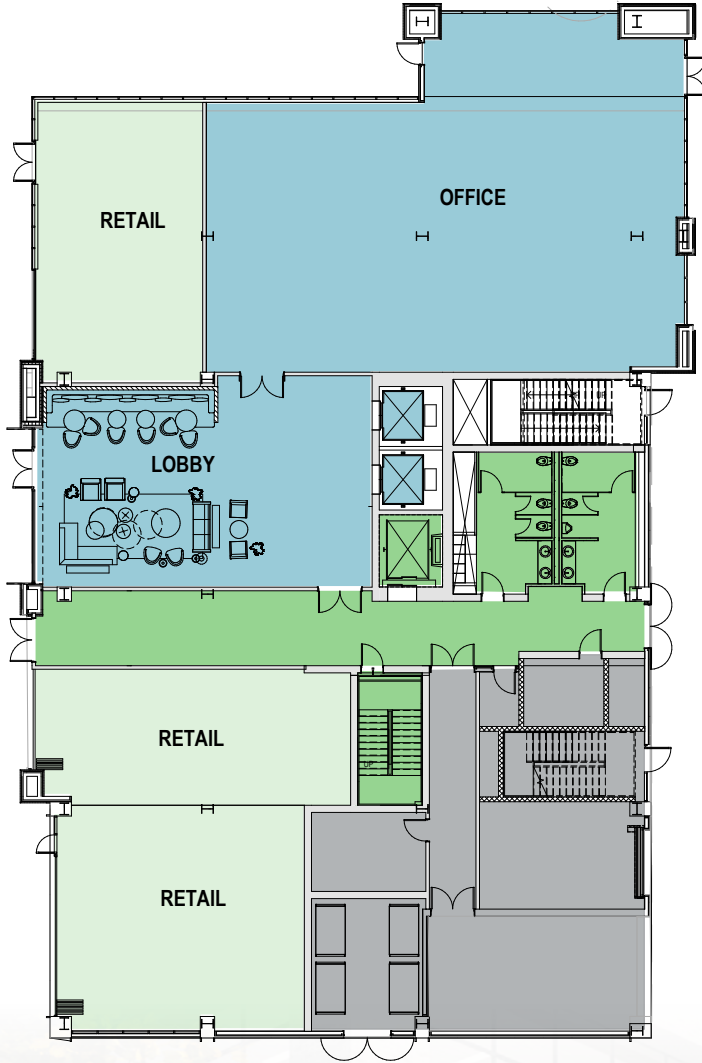


30 MINS
TO SAN FRANCISCO

10 MINS
TO SAN JOSE

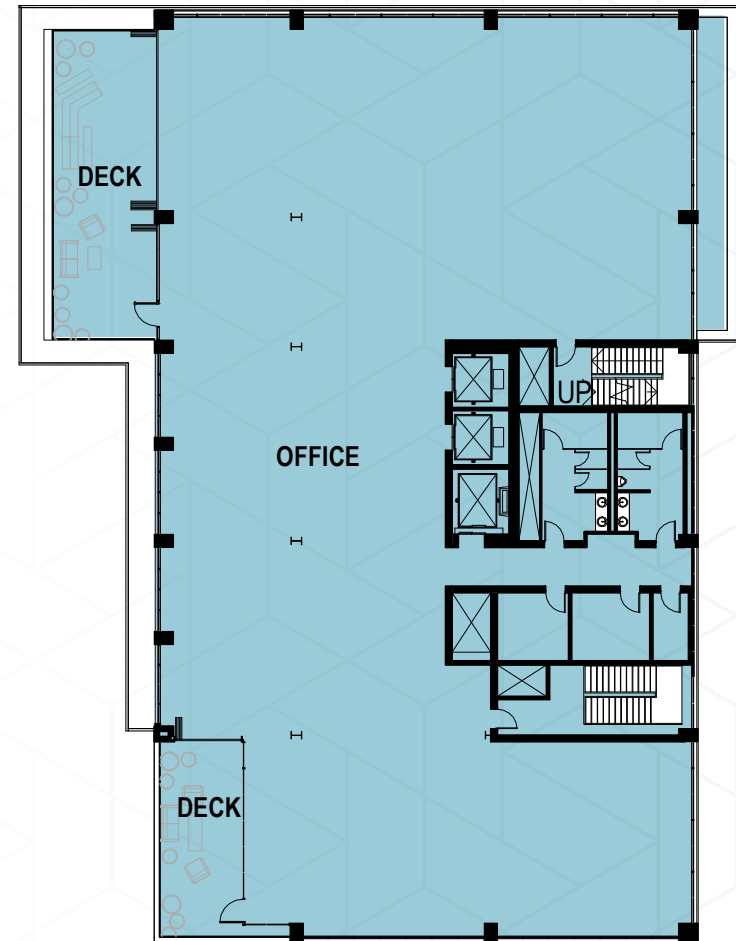
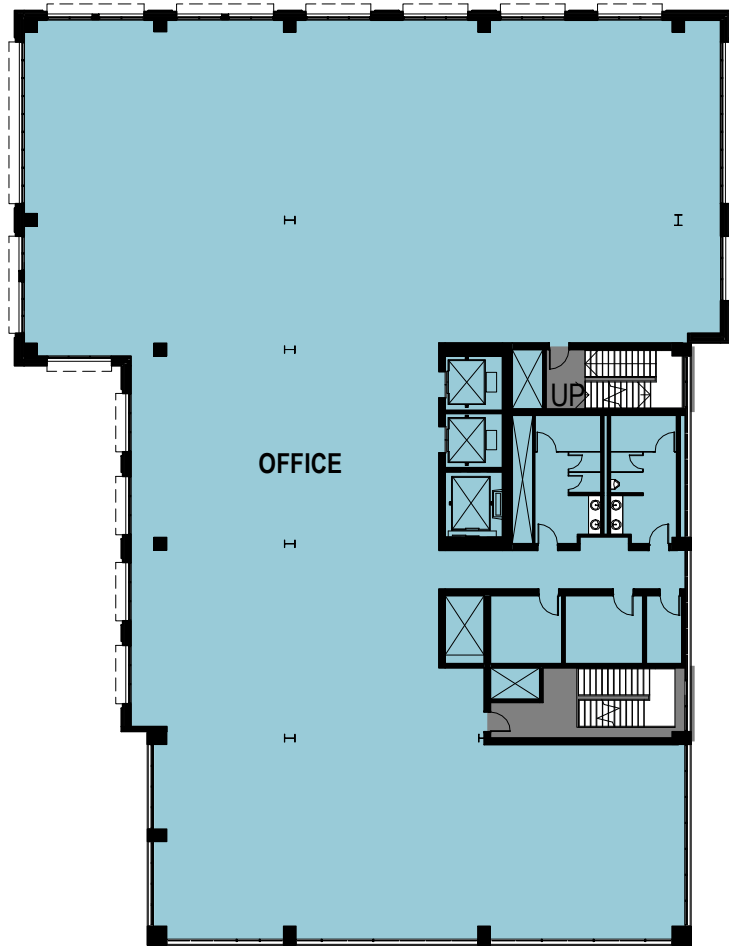
LEVEL 1 ±6,386 SF

LEVEL 2 ±18,262 SF



LEVEL 3 ±18,262 SF

LEVEL 4 ±17,090 SF





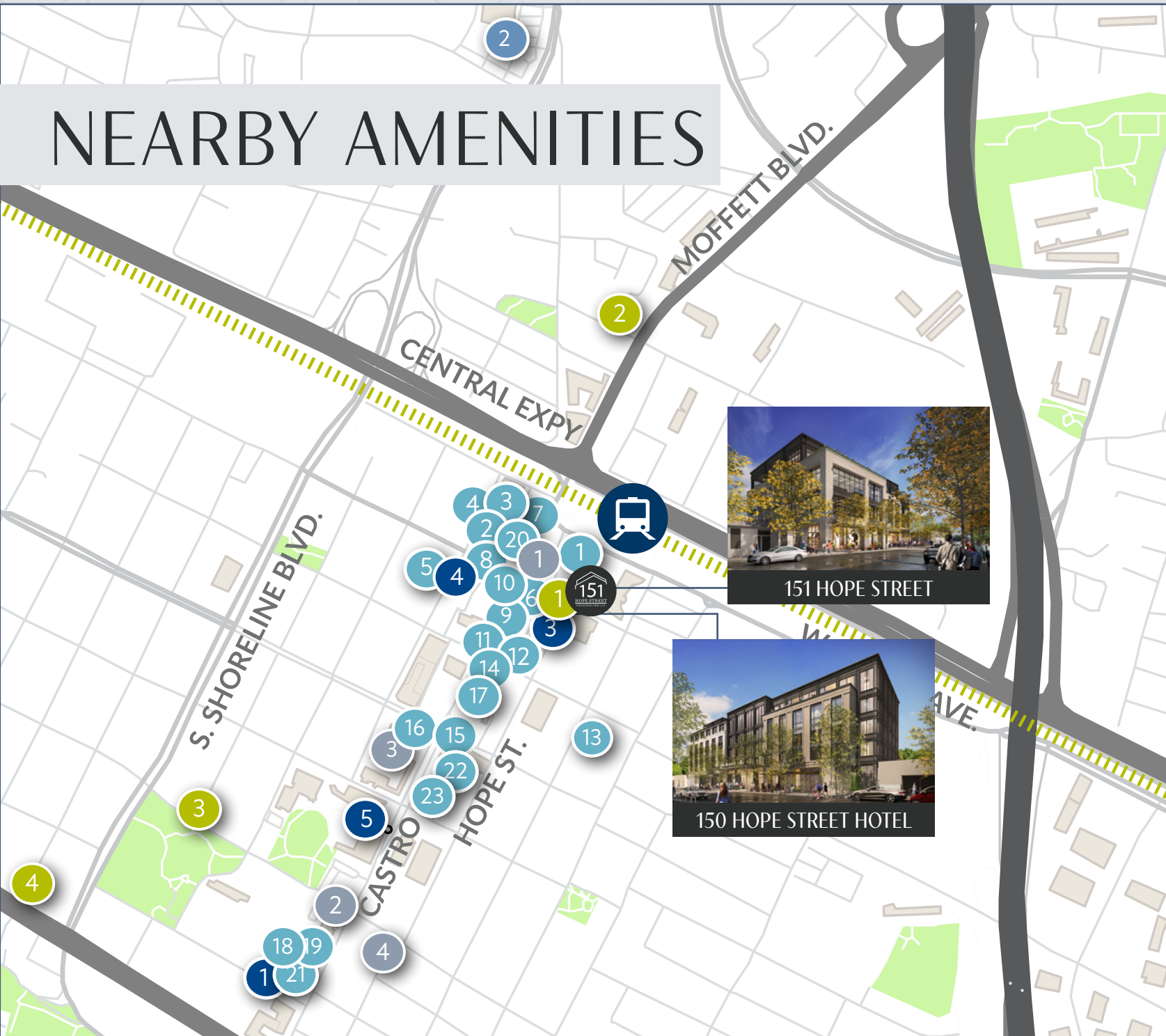
HOPE ST OFFICE

Humble

151

HOPE STREET
MOUNTAIN VIEW | CA

NEARBY AMENITIES



Restaurants

- 1 Subway
- 2 Doppio Zero
- 3 Vaso Azzurro Ristorante
- 4 Bushido Izakaya
- 5 Chez TJ
- 6 Fiesta Del Mar Too
- 7 Xanh Restaurant
- 8 St. Stephen's Green
- 9 Ristorante Don Giovanni
- 10 Gelato Italian Ice Cream
- 11 Queen House
- 12 Dana Street Roasting Co.
- 13 Sushi Tomi
- 14 La PanotiQ Bakery Café
- 15 Scratch
- 16 Cascal
- 17 Bierhaus
- 18 Le Boulanger
- 19 Starbucks
- 20 Asian Box
- 21 Amici's
- 22 Casa Lupe
- 23 Kirin

Retail

- 1 UPS Store
- 2 Safeway
- 3 US Post Office
- 4 Books Inc
- 5 CVS

Banks

- 1 West America Bank
- 2 Wells Fargo
- 3 Bank of America
- 4 Bank of the West

Hotels

- 1 150 Hope Street Boutique Lifestyle Hotel (in development)
- 2 Hampton Inn & Suites
- 3 Americas Best Value Inn
- 4 Holiday Inn Express

Transportation

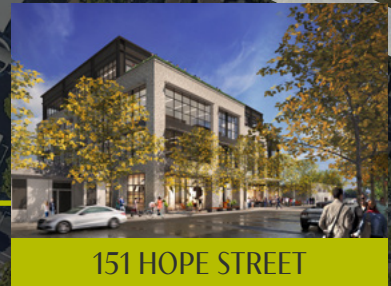




ADJACENT TO CALTRAIN STATION



150 HOPE STREET HOTEL



151 HOPE STREET

DOWNTOWN
MOUNTAIN VIEW



BE CONNECTED

151

HOPE STREET
MOUNTAIN VIEW | CA



DEVELOPED BY:



www.therobergreencompany.com

DAVID HIEBERT

Vice Chairman
+1 650 320 0250
david.hiebert@cushwake.com
Lic #01189320

DAN PERSYN

Executive Managing Director
+1 650 320 0255
dan.persyn@cushwake.com
Lic #01184798

SOFIA LUNDELL

Associate
+1 650 320 0220
sofia.lundell@cushwake.com
Lic #02201946

525 University Ave, Suite 220
Palo Alto, California 94301
main +1 650 852 1200
fax +1 650 856 1098
cushmanwakefield.com



©2023 Cushman & Wakefield. All rights reserved. The information contained in this communication is strictly confidential. This information has been obtained from sources believed to be reliable but has not been verified. NO WARRANTY OR REPRESENTATION, EXPRESS OR IMPLIED, IS MADE AS TO THE CONDITION OF THE PROPERTY (OR PROPERTIES) REFERENCED HEREIN OR AS TO THE ACCURACY OR COMPLETENESS OF THE INFORMATION CONTAINED HEREIN, AND SAME IS SUBMITTED SUBJECT TO ERRORS, OMISSIONS, CHANGE OF PRICE, RENTAL OR OTHER CONDITIONS, WITHDRAWAL WITHOUT NOTICE, AND TO ANY SPECIAL LISTING CONDITIONS IMPOSED BY THE PROPERTY OWNER(S). ANY PROJECTIONS, OPINIONS OR ESTIMATES ARE SUBJECT TO UNCERTAINTY AND DO NOT SIGNIFY CURRENT OR FUTURE PROPERTY PERFORMANCE. COE-PM-WEST- 09/07/23