



FOR LEASE

**277 Castro Street**  
Mountain View, California



## DOWNTOWN MOUNTAIN VIEW OFFICE SPACE

**±1,000 Square Feet**

### Property Highlights

- Rare office space, perfect for start-ups
- Walking distance from Caltrain
- Second floor space
- New LED lighting

**Ron Miller**  
Director  
+1 650 320 0207  
ron.miller@cushwake.com  
LIC #01811036

525 University Avenue, Suite 220  
Palo Alto, California 94301  
+1 650 852 1200  
[www.cushmanwakefield.com](http://www.cushmanwakefield.com)

©September 18, 2023 5:10 PM Cushman & Wakefield. All rights reserved. The information contained in this communication is strictly confidential. This information has been obtained from sources believe to be reliable but has not been verified. NO WARRANTY OR REPRESENTATION, EXPRESS OR IMPLIED, IS MADE AS TO THE CONDITION OF THE PROPERTY (OR PROPERTIES) REFERENCED HEREIN OR AS TO THE ACCURACY OR COMPLETENESS OF THE INFORMATION CONTAINED HEREIN, AND SAME IS SUBMITTED SUBJECT TO ERRORS, OMISSIONS, CHANGE OF PRICE, RENTAL OR OTHER CONDITIONS, WITHDRAWAL WITHOUT NOTICE, AND TO ANY SPECIAL LISTING CONDITIONS IMPOSED BY THE PROPERTY OWNER(S). ANY PROJECTIONS, OPINIONS OR ESTIMATES ARE SUBJECT TO UNCERTAINTY AND DO NOT SIGNIFY CURRENT OR FUTURE PROPERTY PERFORMANCE.



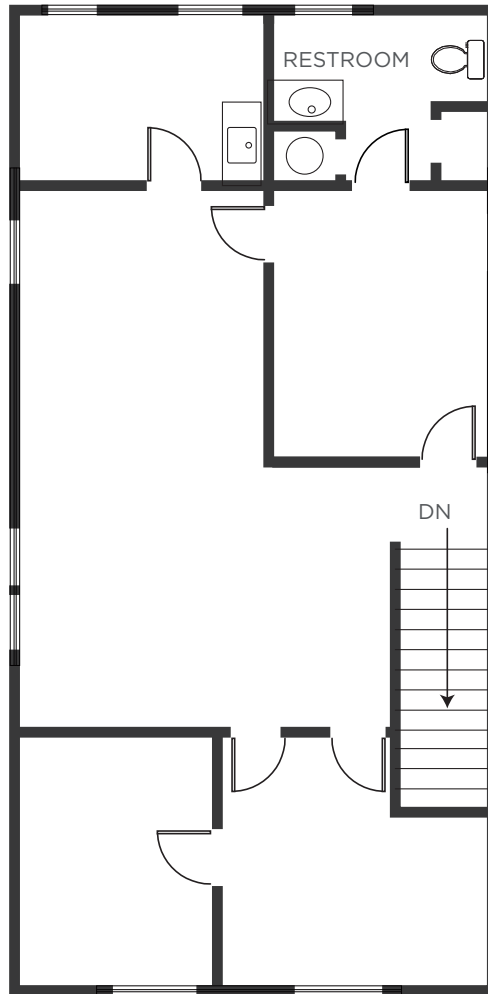
**CUSHMAN &  
WAKEFIELD**

FOR LEASE

**277 Castro Street**  
Mountain View, California

**Floor Plan**

± 1,000 SF



Floor plan not to scale

**Ron Miller**  
Director  
+1 650 320 0207  
ron.miller@cushwake.com  
LIC #01811036

525 University Avenue, Suite 220  
Palo Alto, California 94301  
+1 650 852 1200  
[www.cushmanwakefield.com](http://www.cushmanwakefield.com)

©September 18, 2023 5:10 PM Cushman & Wakefield. All rights reserved. The information contained in this communication is strictly confidential. This information has been obtained from sources believe to be reliable but has not been verified. NO WARRANTY OR REPRESENTATION, EXPRESS OR IMPLIED, IS MADE AS TO THE CONDITION OF THE PROPERTY (OR PROPERTIES) REFERENCED HEREIN OR AS TO THE ACCURACY OR COMPLETENESS OF THE INFORMATION CONTAINED HEREIN, AND SAME IS SUBMITTED SUBJECT TO ERRORS, OMISSIONS, CHANGE OF PRICE, RENTAL OR OTHER CONDITIONS, WITHDRAWAL WITHOUT NOTICE, AND TO ANY SPECIAL LISTING CONDITIONS IMPOSED BY THE PROPERTY OWNER(S). ANY PROJECTIONS, OPINIONS OR ESTIMATES ARE SUBJECT TO UNCERTAINTY AND DO NOT SIGNIFY CURRENT OR FUTURE PROPERTY PERFORMANCE.