

747

W DANA STREET
MOUNTAIN VIEW | CA



Located in Downtown Mountain View
For Lease \pm 10,527 SF Office Space



747

W DANA STREET
MOUNTAIN VIEW | CA

property highlights



Fully Entitled Building
Construction to commence Q4 2023/Q1 2024



±10,527 SF



New Construction



Steps away from Caltrain, Light Rail, and Mountain View Transit Center



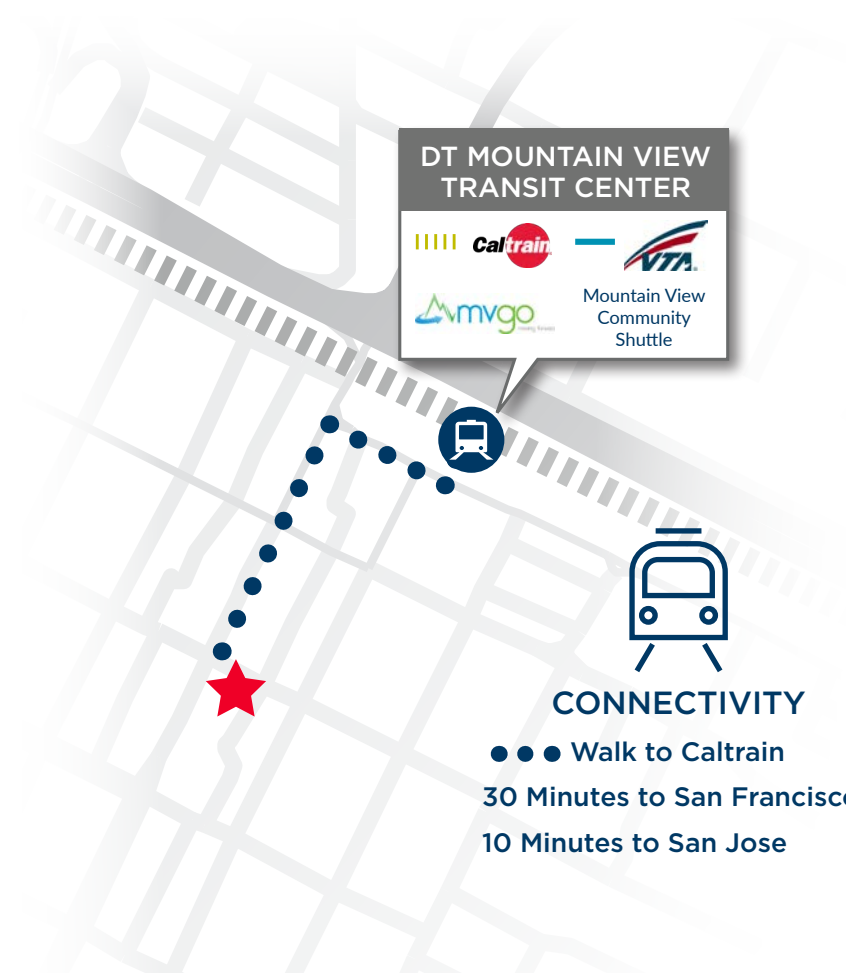
Located in the heart of Downtown Mountain View within walking distance to countless downtown amenities



Easy access to highways 101, 85, 237, 280, and Central Expressway



Adjacent to city parking



**DT MOUNTAIN VIEW
TRANSIT CENTER**

Caltrain VTA
Amvgo Mountain View Community Shuttle



CONNECTIVITY

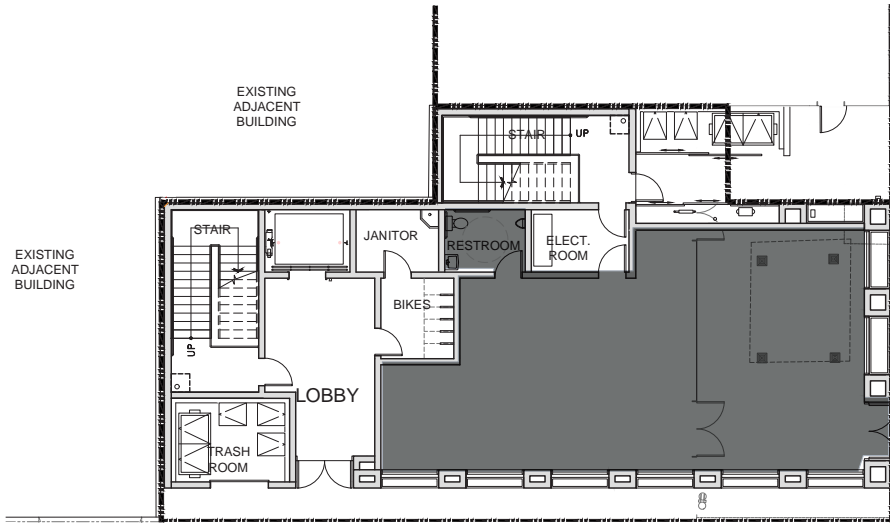
- Walk to Caltrain
- 30 Minutes to San Francisco
- 10 Minutes to San Jose

key features

- Fully Entitled Building
- New Construction
- 14 ft. Deck to Deck Ceilings
- Colum Free
- Two exterior Decks

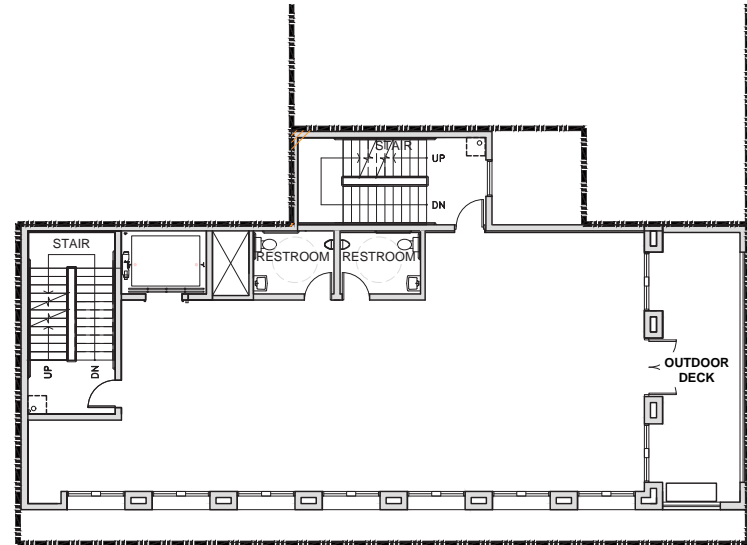
floor plans

Level 01: ±2,662 SF



W DANA STREET ↑

Level 02: ±2,719 SF



747

W DANA STREET
MOUNTAIN VIEW | CA

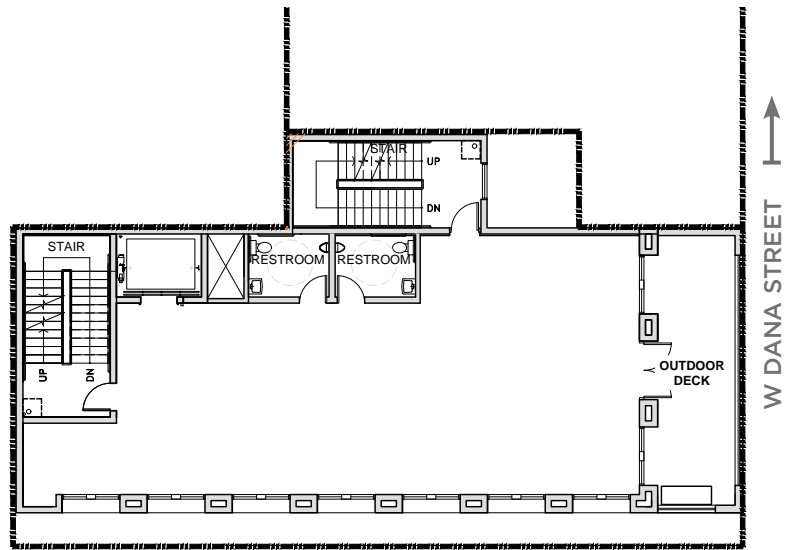
Floor Plan Not to Scale

pedestrian view from w. dana street

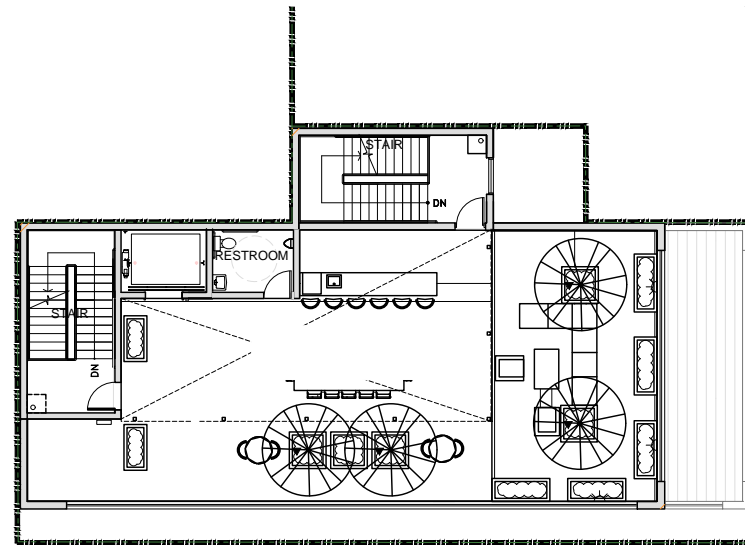


floor plans

Level 03: ±2,719 SF



Rooftop Deck: ±2,427 SF



747

W DANA STREET
MOUNTAIN VIEW | CA

Floor Plan Not to Scale

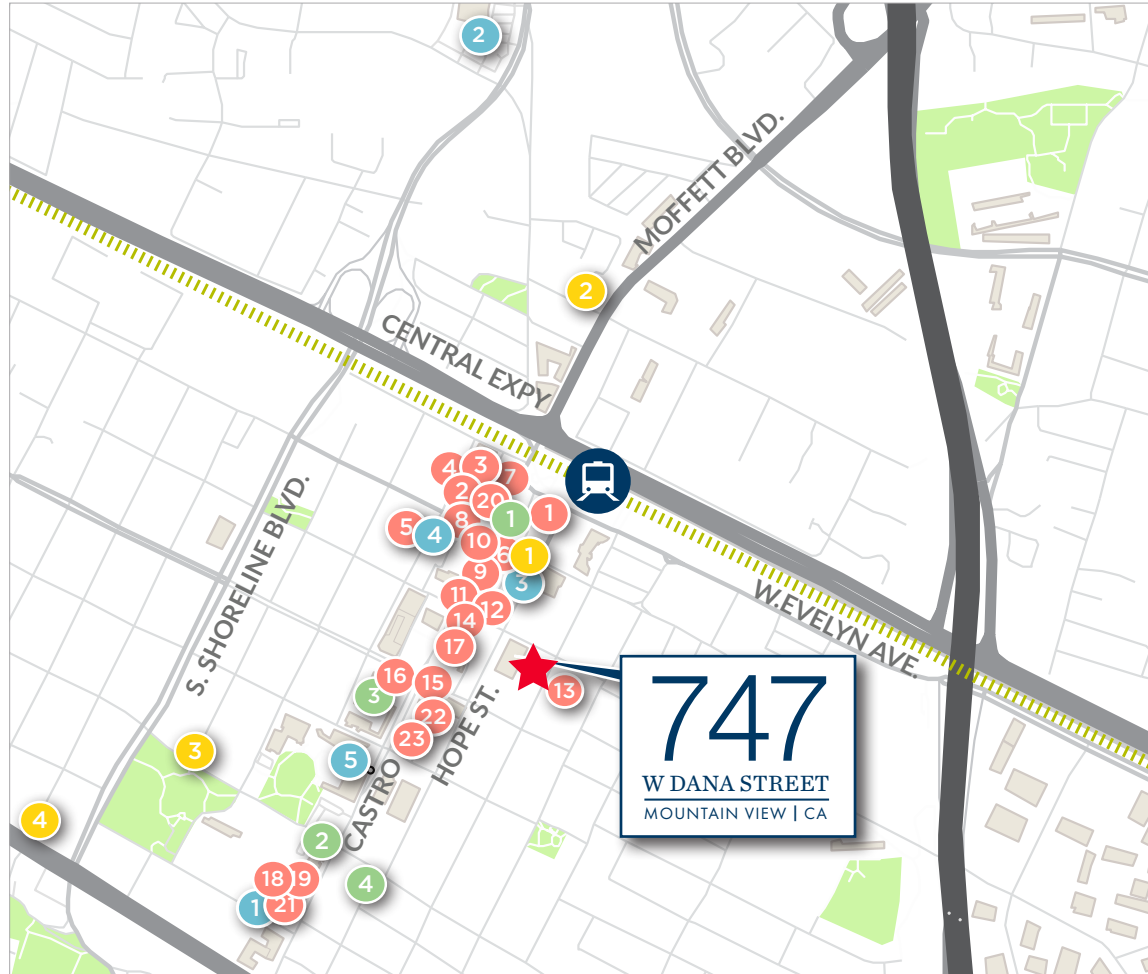
rooftop deck



747

W DANA STREET
MOUNTAIN VIEW | CA

nearby amenities



RESTAURANTS

- 1 Subway
- 2 Doppio Zero
- 3 Vaso Azzurro Ristorante
- 4 Bushido Izakaya
- 5 Chez TJ
- 6 Fiesta Del Mar Too
- 7 Xanh Restaurant
- 8 St. Stephen's Green
- 9 Ristorante Don Giovanni
- 10 Gelato Italian Ice Cream
- 11 Queen House
- 12 Dana Street Roasting Co.
- 13 Sushi Tomi
- 14 La PanotiQ Bakery Café
- 15 Scratch
- 16 Cascal
- 17 Bierhaus
- 18 Le Boulanger
- 19 Starbucks
- 20 Asian Box
- 21 Amici's
- 22 Casa Lupe
- 23 Kirin

RETAIL

- 1 UPS Store
- 2 Safeway
- 3 US Post Office
- 4 Books Inc
- 5 CVS

BANKS

- 1 West America Bank
- 2 Wells Fargo
- 3 Bank of America
- 4 Bank of the West

HOTELS

- 1 150 Hope Street Boutique Lifestyle Hotel (in development)
- 2 Hampton Inn & Suites
- 3 Americas Best Value Inn

TRANSPORTATION

- 4 Holiday Inn Express
-

be connected

WALK TO CALTRAIN STATION ● ● ●



747

W DANA STREET
MOUNTAIN VIEW | CA



Jim Chesler | Managing Director | +1 415 971 3320 | jim.chesler@cushwake.com | Lic #01274224

Dan Persyn | Executive Managing Director | +1 650 320 0255 | dan.persyn@cushwake.com | Lic #01184798

Sofia Lundell | Associate | +1 650 320 0220 | sofia.lundell@cushwake.com | Lic #02201946

525 University Ave, Suite 220 | Palo Alto, California 94747 | main +1 650 852 1200 | fax +1 650 856 1098 | cushmanwakefield.com



©2023 Cushman & Wakefield. All rights reserved. The information contained in this communication is strictly confidential. This information has been obtained from sources believed to be reliable but has not been verified. NO WARRANTY OR REPRESENTATION, EXPRESS OR IMPLIED, IS MADE AS TO THE CONDITION OF THE PROPERTY (OR PROPERTIES) REFERENCED HEREIN OR AS TO THE ACCURACY OR COMPLETENESS OF THE INFORMATION CONTAINED HEREIN, AND SAME IS SUBMITTED SUBJECT TO ERRORS, OMISSIONS, CHANGE OF PRICE, RENTAL OR OTHER CONDITIONS, WITHDRAWAL WITHOUT NOTICE, AND TO ANY SPECIAL LISTING CONDITIONS IMPOSED BY THE PROPERTY OWNER(S). ANY PROJECTIONS, OPINIONS OR ESTIMATES ARE SUBJECT TO UNCERTAINTY AND DO NOT SIGNIFY CURRENT OR FUTURE PROPERTY PERFORMANCE.