

# FOR LEASE THE VINEYARD

485 N Whisman Road, Mountain View, CA 94043



**SUITE 200: ±3,848 SF**

## PROPERTY HIGHLIGHTS

- Class A Office Condominium
- 3 Private Offices, 2 Conference Rooms, 2 Kitchenettes
- CAT5 Wired and Key Card Entry System
- Office is Green Business Certifiable
- Outside Lunch Area, Coffee Shop and Restaurant On-site
- Stevens Creek Trail for Walking/Biking
- Two Designated Parking Spaces
- Located near Google in the heart of Mountain View, short drive to Downtown.
- Easy Access to HWY 101, 85, 237 & Public Transportation
- Short Walk to the Middlefield Light Rail Station
- 5 Minutes to Downtown Mountain View
- Potential expansion to 435 N Whisman for a total of ±11,492 SF
- Call Today to Tour the Space

## Contact

**Kalil Jenab**  
Vice Chairman  
+1 408 810 3428  
kalil.jenab@cushwake.com  
LIC #00848988

**Eric Sorensen**  
Director  
+1 650 320 0234  
eric.c.sorensen@cushwake.com  
LIC #01709528

**Steven Jenab**  
Director  
+1 650 320 0211  
steven.jenab@cushwake.com  
LIC #02085072

525 University Avenue, Suite 220  
Palo Alto, California 94301  
main +1 650 852 1200  
fax +1 650 856 1098  
**cushmanwakefield.com**

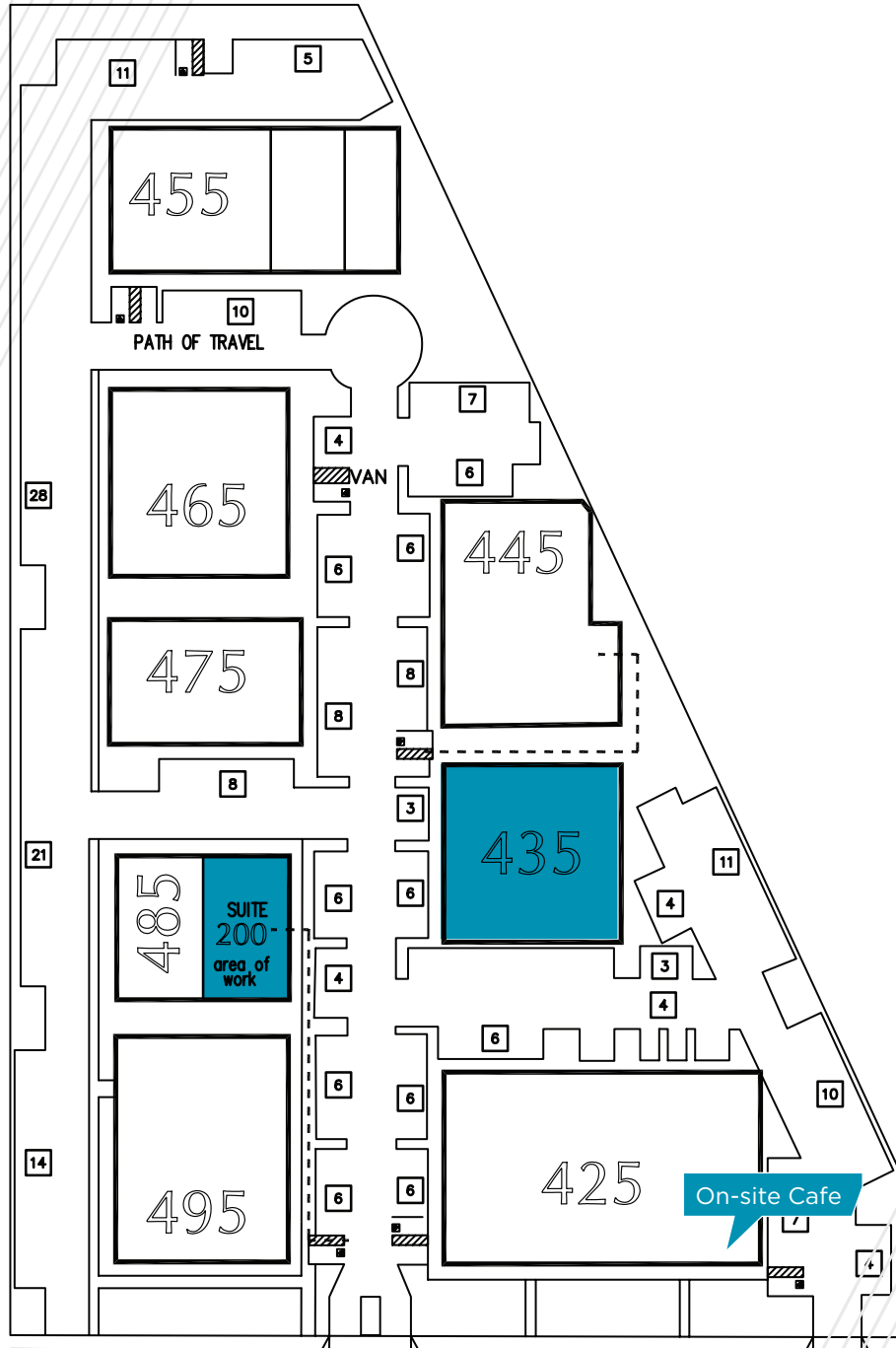
©2022 Cushman & Wakefield. All rights reserved. The information contained in this communication is strictly confidential. This information has been obtained from sources believed to be reliable but has not been verified. No warranty or representation, express or implied, is made as to the condition of the property (or properties) referenced herein or as to the accuracy or completeness of the information contained herein, and same is submitted subject to errors, omissions, change of price, rental or other conditions, withdrawal without notice, and to any special listing conditions imposed by the property owner(s). Any projections, opinions or estimates are subject to uncertainty and do not signify current or future property performance.

**FOR LEASE**  
**THE VINEYARD**

485 N Whisman Road, Mountain View, CA 94043



**SITE PLAN**



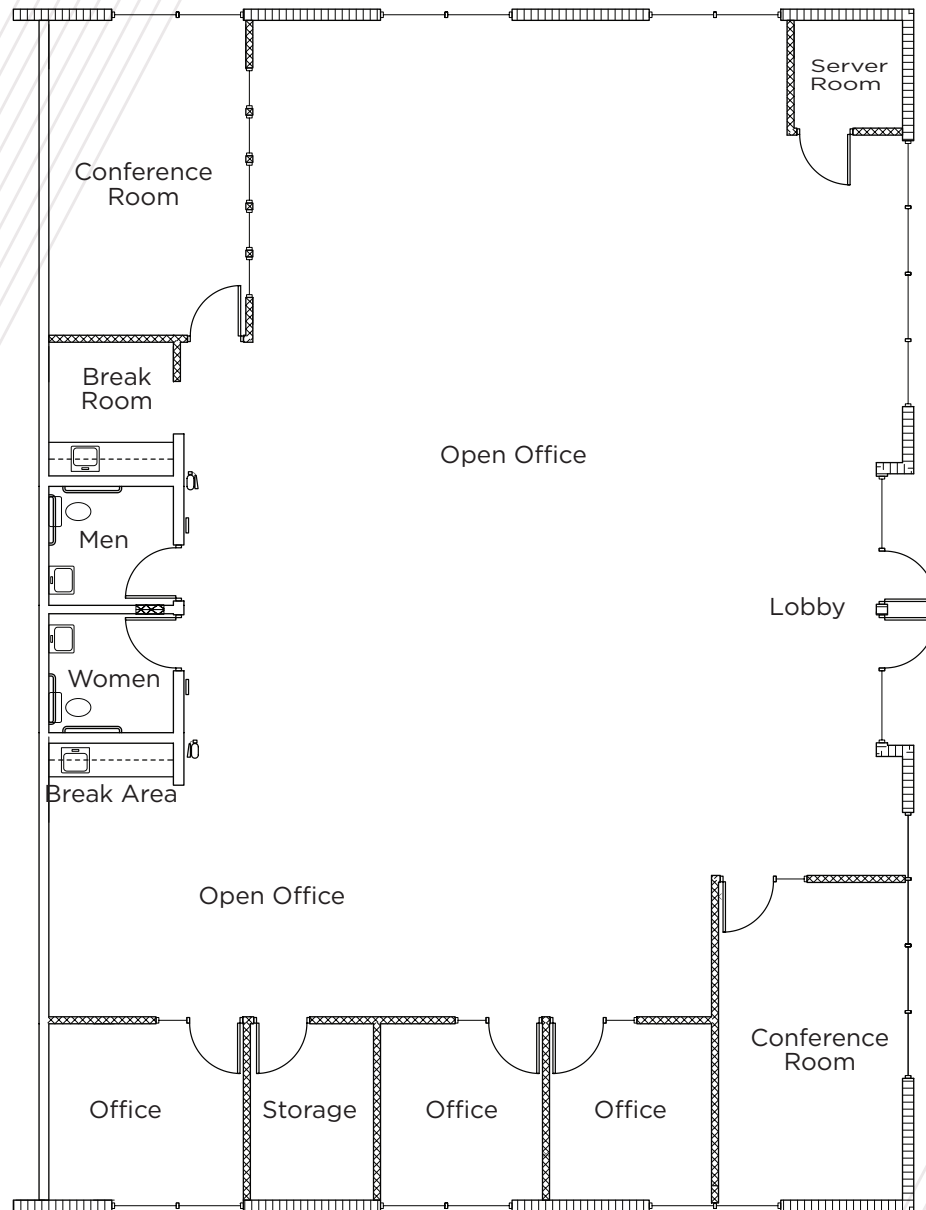
**North Whisman Road**

**FOR LEASE**  
**THE VINEYARD**

485 N Whisman Road, Mountain View, CA 94043



**FLOOR PLAN - SUITE 200: ±3,848 SF**



Floor plan not to scale

**Contact**

**Kalil Jenab**  
Vice Chairman  
+1 408 810 3428  
kalil.jenab@cushwake.com  
LIC #00848988

**Eric Sorensen**  
Director  
+1 650 320 0234  
eric.c.sorensen@cushwake.com  
LIC #01709528

**Steven Jenab**  
Director  
+1 650 320 0211  
steven.jenab@cushwake.com  
LIC #02085072

525 University Avenue, Suite 220  
Palo Alto, California 94301  
main +1 650 852 1200  
fax +1 650 856 1098  
**cushmanwakefield.com**

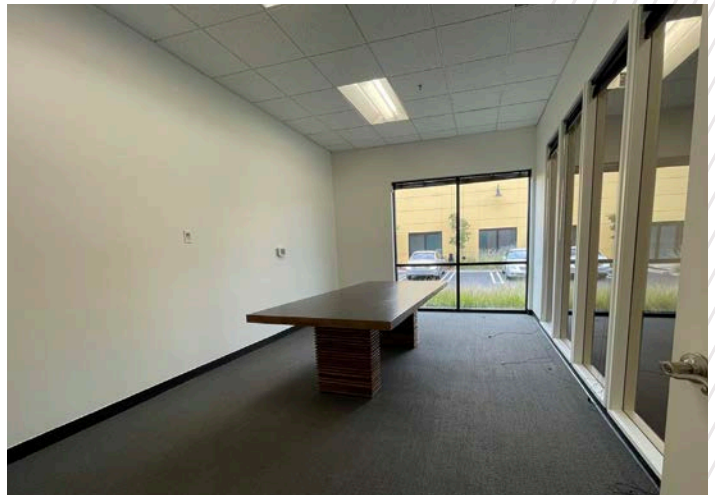
©2022 Cushman & Wakefield. All rights reserved. The information contained in this communication is strictly confidential. This information has been obtained from sources believed to be reliable but has not been verified. No warranty or representation, express or implied, is made as to the condition of the property (or properties) referenced herein or as to the accuracy or completeness of the information contained herein, and same is submitted subject to errors, omissions, change of price, rental or other conditions, withdrawal without notice, and to any special listing conditions imposed by the property owner(s). Any projections, opinions or estimates are subject to uncertainty and do not signify current or future property performance.

**FOR LEASE**  
**THE VINEYARD**

485 N Whisman Road, Mountain View, CA 94043



**INTERIOR PHOTOS**



# FOR LEASE THE VINEYARD

435 N Whisman Road, Mountain View, CA 94043



## AMENITIES MAP



## Contact

**Kalil Jenab**  
Vice Chairman  
+1 408 200 8800  
kalil.jenab@cushwake.com  
LIC #00848988

**Eric Sorensen**  
Director  
+1 650 320 0234  
eric.c.sorensen@cushwake.com  
LIC #01709528

**Steven Jenab**  
Director  
+1 650 320 0211  
steven.jenab@cushwake.com  
LIC #02085072

525 University Avenue, Suite 220  
Palo Alto, California 94301  
main +1 650 852 1200  
fax +1 650 856 1098  
**cushmanwakefield.com**