

FOR SUBLEASE

1230 MIDAS WAY

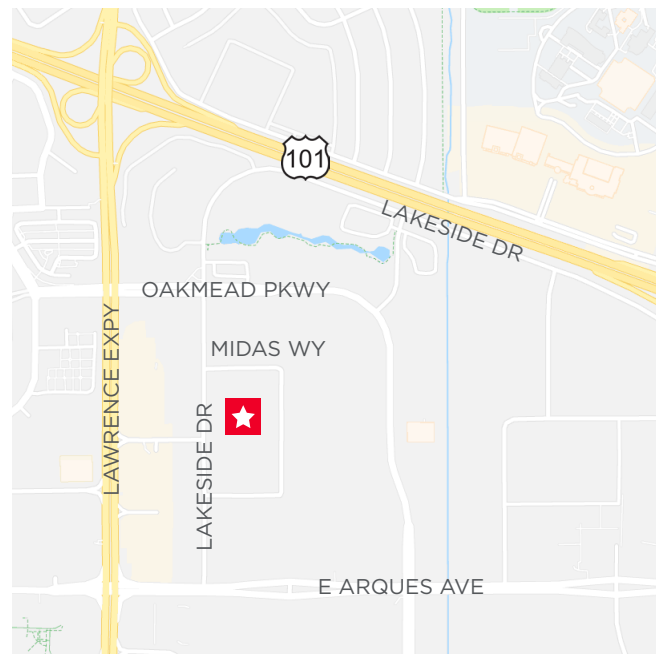
SUNNYVALE, CALIFORNIA



Suite 200: ±3,078 SF

Property Highlights

- Flexible Office Space with High End Finishes
- Great Location Near 101 and Lawrence Expressway
- Exercise Facility with New Equipment, Showers and Shared Conference Room Space
- Comcast Business Class and AT&T Fiber Available in Building
- Walking Distance to Several Dining Options
- Lease End Date: March 31, 2020



Walt Stephenson
Managing Director
+1 408 615 3458
walt.stephenson@cushwake.com
LIC #0179348

300 Santana Row, Fifth Floor
San Jose, CA 95128
main +1 408 615 3400
fax +1 408 615 3444
cushmanwakefield.com

Cushman & Wakefield Copyright 2018. No warranty or representation, express or implied, is made to the accuracy or completeness of the information contained herein, and same is submitted subject to errors, omissions, change of price, rental or other conditions, withdrawal without notice, and to any special listing conditions imposed by the property owner(s). As applicable, we make no representation as to the condition of the property (or properties) in question.

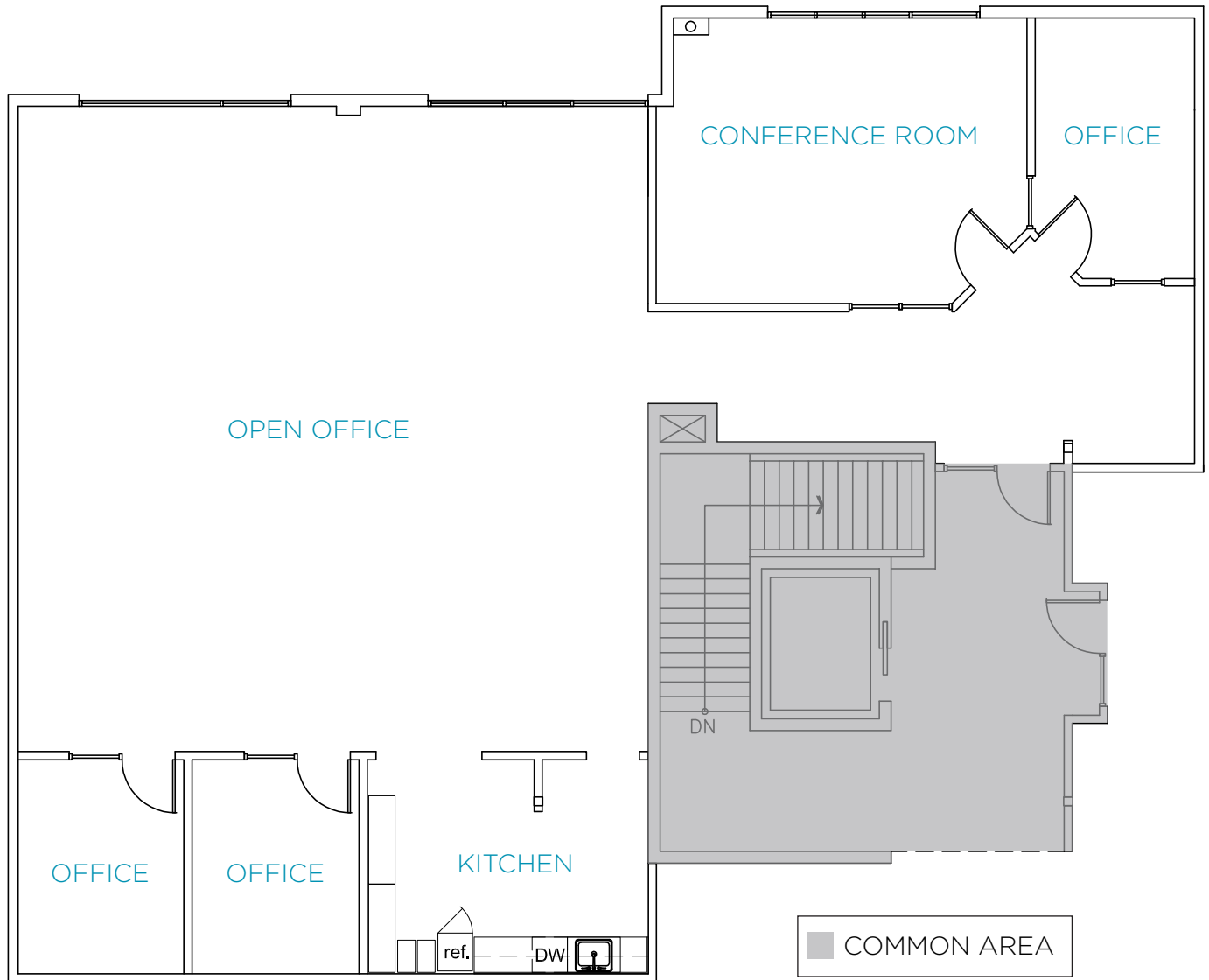
FOR SUBLEASE

1230 MIDAS WAY

SUNNYVALE, CALIFORNIA



Floor Plan



Walt Stephenson
Managing Director
+1 408 615 3458
walt.stephenson@cushwake.com
LIC #0179348

300 Santana Row, Fifth Floor
San Jose, CA 95128
main +1 408 615 3400
fax +1 408 615 3444
cushmanwakefield.com

Cushman & Wakefield Copyright 2018. No warranty or representation, express or implied, is made to the accuracy or completeness of the information contained herein, and same is submitted subject to errors, omissions, change of price, rental or other conditions, withdrawal without notice, and to any special listing conditions imposed by the property owner(s). As applicable, we make no representation as to the condition of the property (or properties) in question.