

# 11240 KATHERINE'S CROSSING WOODRIDGE, IL



32,222 SF AVAILABLE  
FOR SUBLEASE THROUGH  
5/31/2027



## PROPERTY OVERVIEW



Available SF: 32,222 SF



Office SF: 3,494 SF  
**plus** 2,972 SF dropped ceiling/assembly area



Loading: 5 docks/1 drive-in-door



Clear Height: 30'



Parking: 45+ cars, 10 trailer



Power: Min. 400 Amps @480v



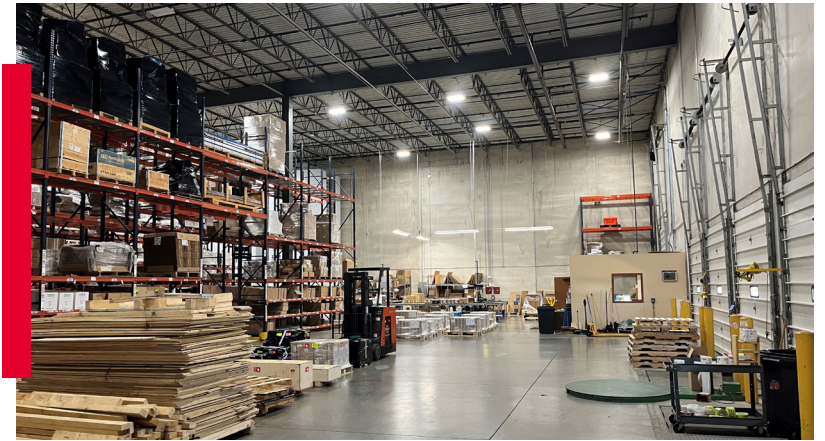
Year Built: 2007



RE Taxes (2023): \$1.09/sf

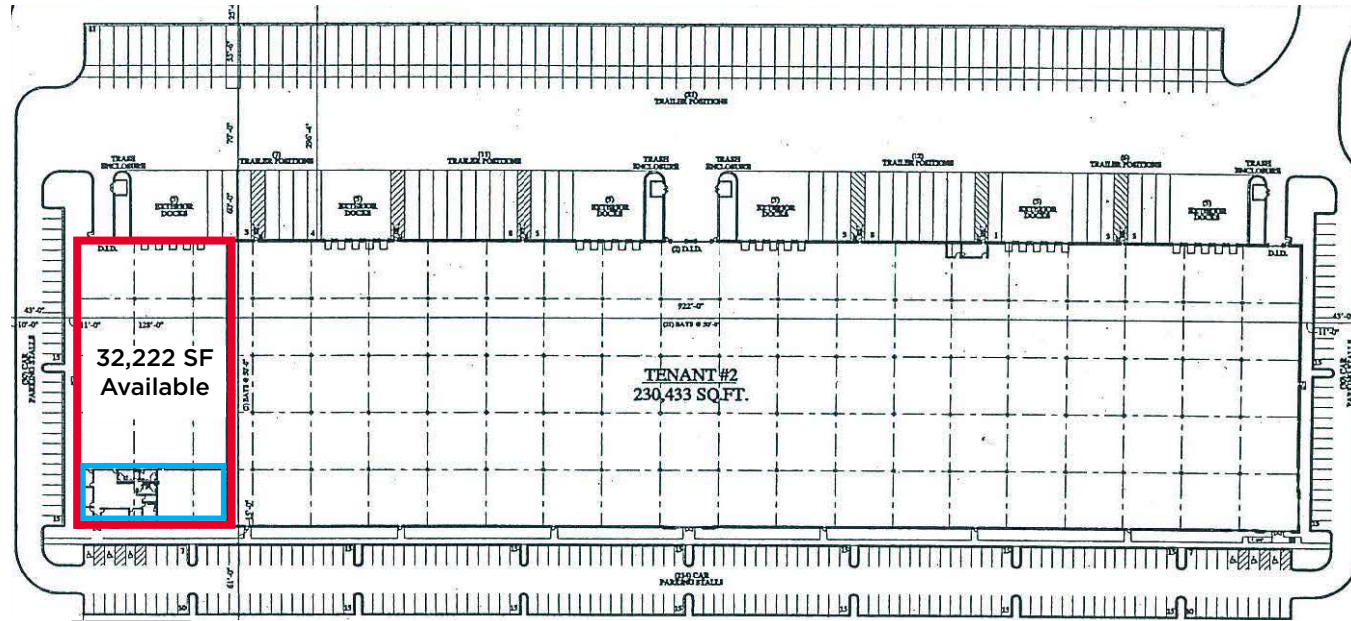


Sublease Rate: \$9.45/sf Net

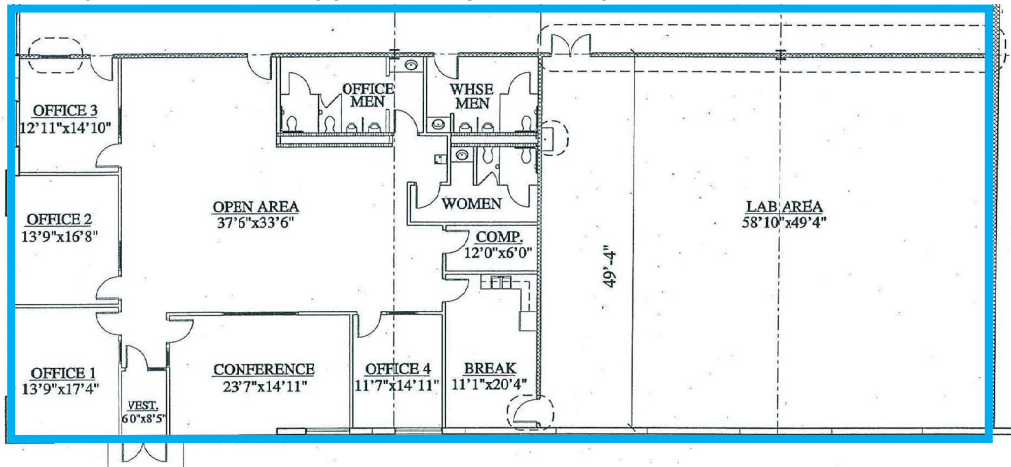


# Site Plan

11240 KATHERINE'S CROSSING  
WOODRIDGE, IL



**3,494 SF Office  
plus 2,972 SF dropped ceiling/assembly area**

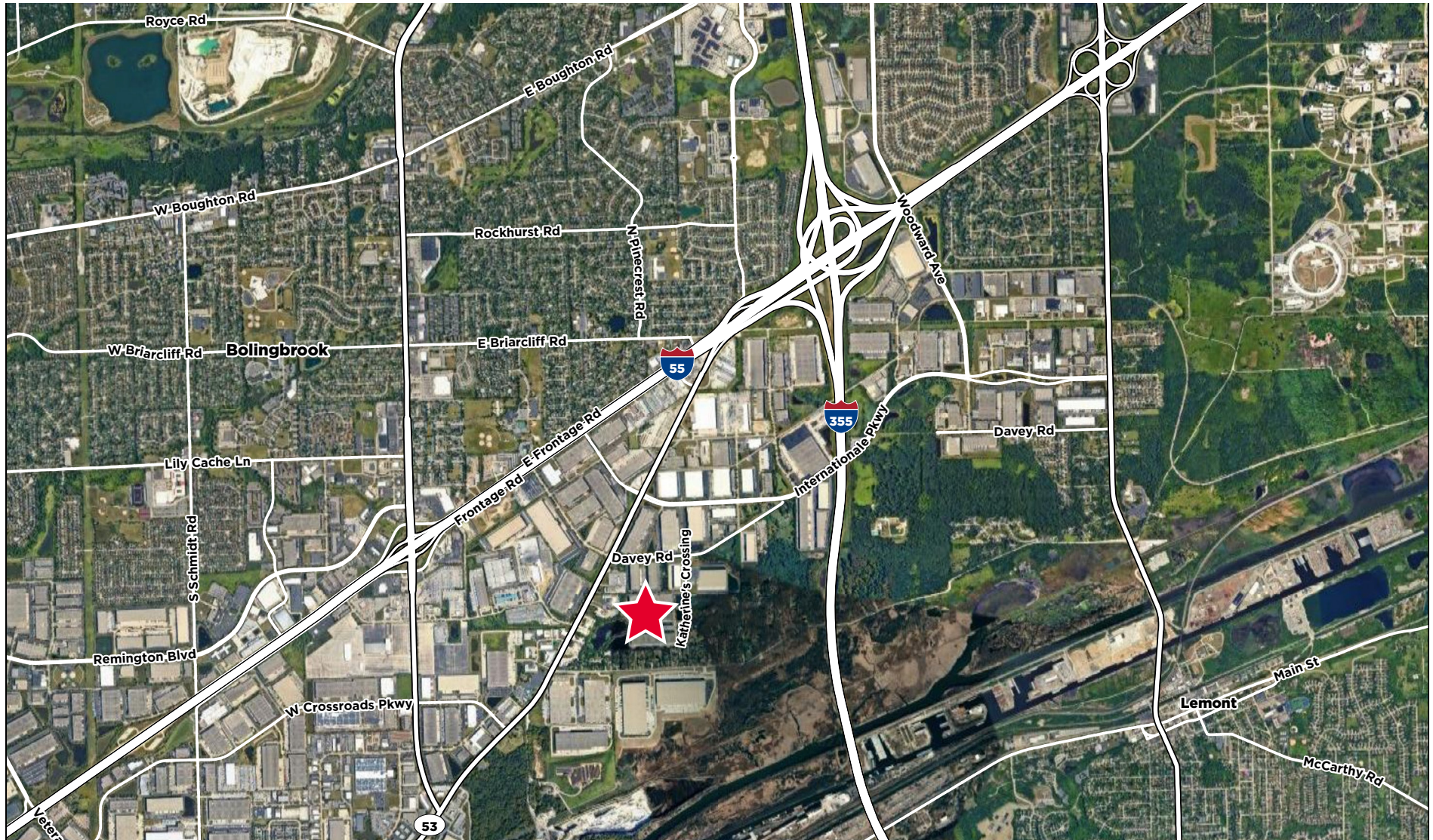


**Ryan Klink**  
Managing Director  
+1 847 518 3211  
ryan.klink@cushwake.com

**Keith Puritz**  
Vice Chair  
+1 847 720 1366  
keith.puritz@cushwake.com

# Aerial Map

11240 KATHERINE'S CROSSING  
WOODRIDGE, IL



**Ryan Klink**  
Managing Director  
+1 847 518 3211  
ryan.klink@cushwake.com

**Keith Puritz**  
Vice Chair  
+1 847 720 1366  
keith.puritz@cushwake.com





**Ryan Klink**  
Managing Director  
+1 847 518 3211  
ryan.klink@cushwake.com

**Keith Puritz**  
Vice Chair  
+1 847 720 1366  
keith.puritz@cushwake.com



©2024 Cushman & Wakefield. All rights reserved. The information contained in this communication is strictly confidential. This information has been obtained from sources believed to be reliable but has not been verified. NO WARRANTY OR REPRESENTATION, EXPRESS OR IMPLIED, IS MADE AS TO THE CONDITION OF THE PROPERTY (OR PROPERTIES) REFERENCED HEREIN OR AS TO THE ACCURACY OR COMPLETENESS OF THE INFORMATION CONTAINED HEREIN, AND SAME IS SUBMITTED SUBJECT TO ERRORS, OMISSIONS, CHANGE OF PRICE, RENTAL OR OTHER CONDITIONS, WITHDRAWAL WITHOUT NOTICE, AND TO ANY SPECIAL LISTING CONDITIONS IMPOSED BY THE PROPERTY OWNER(S). ANY PROJECTIONS, OPINIONS OR ESTIMATES ARE SUBJECT TO UNCERTAINTY AND DO NOT SIGNIFY CURRENT OR FUTURE PROPERTY PERFORMANCE.