

FOR SALE
± 2.74 ACRES



10,800 SF WAREHOUSE & 1,960 SF OFFICE



153 DORA VILLAGE
MAIN STREET

GREENSBORO, PA 15338

153 DORA VILLAGE MAIN STREET

PROPERTY HIGHLIGHTS

- Three (3) building complex in Greene County on approximately 2.74 acres
- Stand-alone office building with two entry points and keypad combinations
- Equipped trailer home for onsite property manager or additional office/storage space

Warehouse Building With Multiple Drive-In Doors

15' clear ceiling height

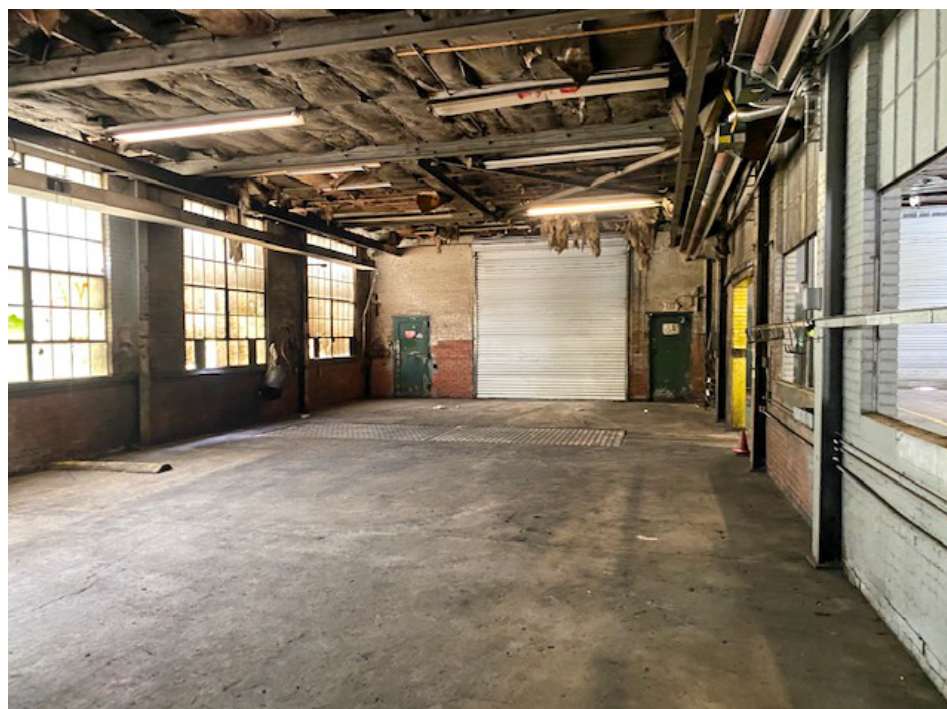
Four (4) 12 x 14 drive-in doors

One (1) 10 x 12 drive-in door

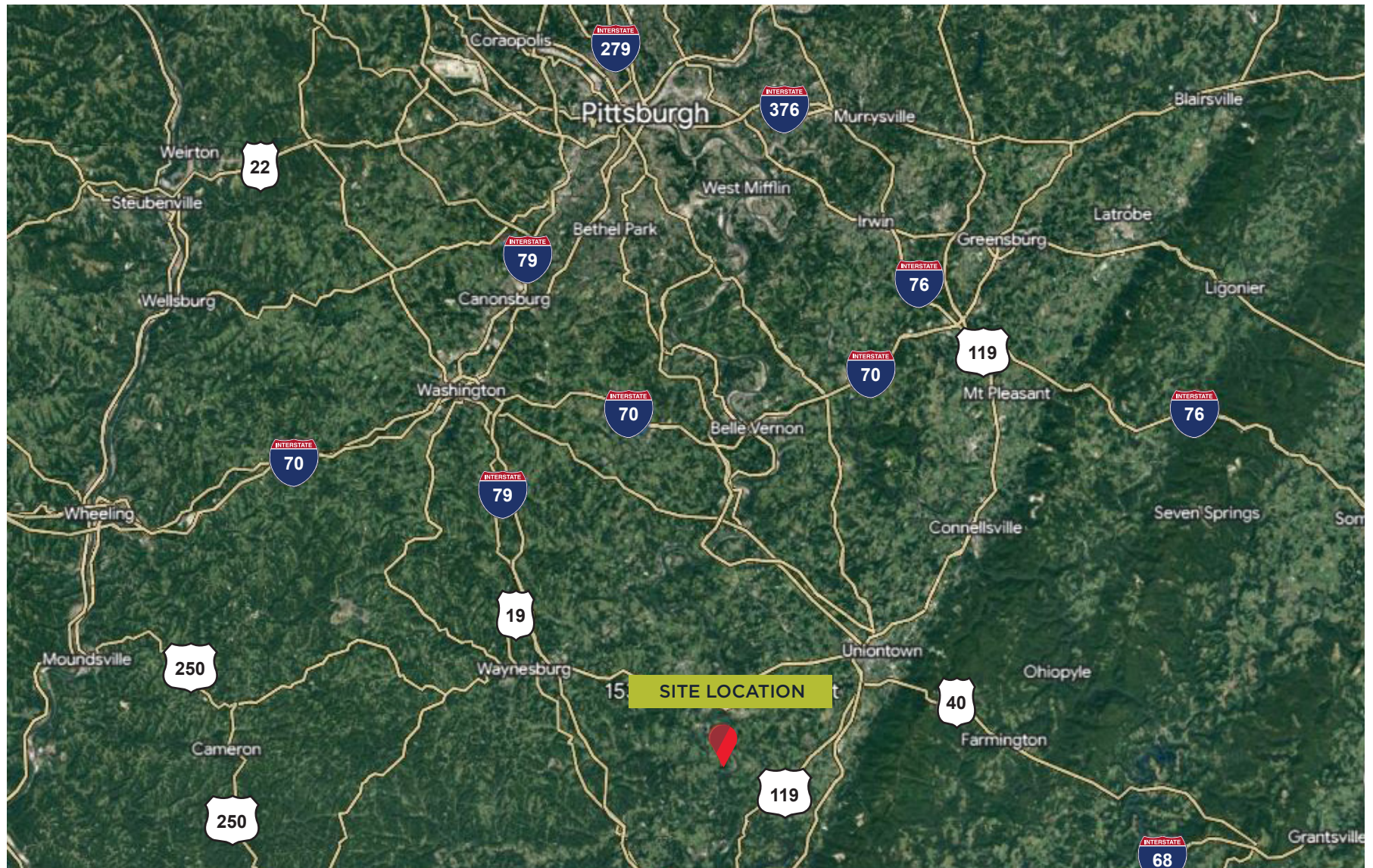
One (1) ton crane



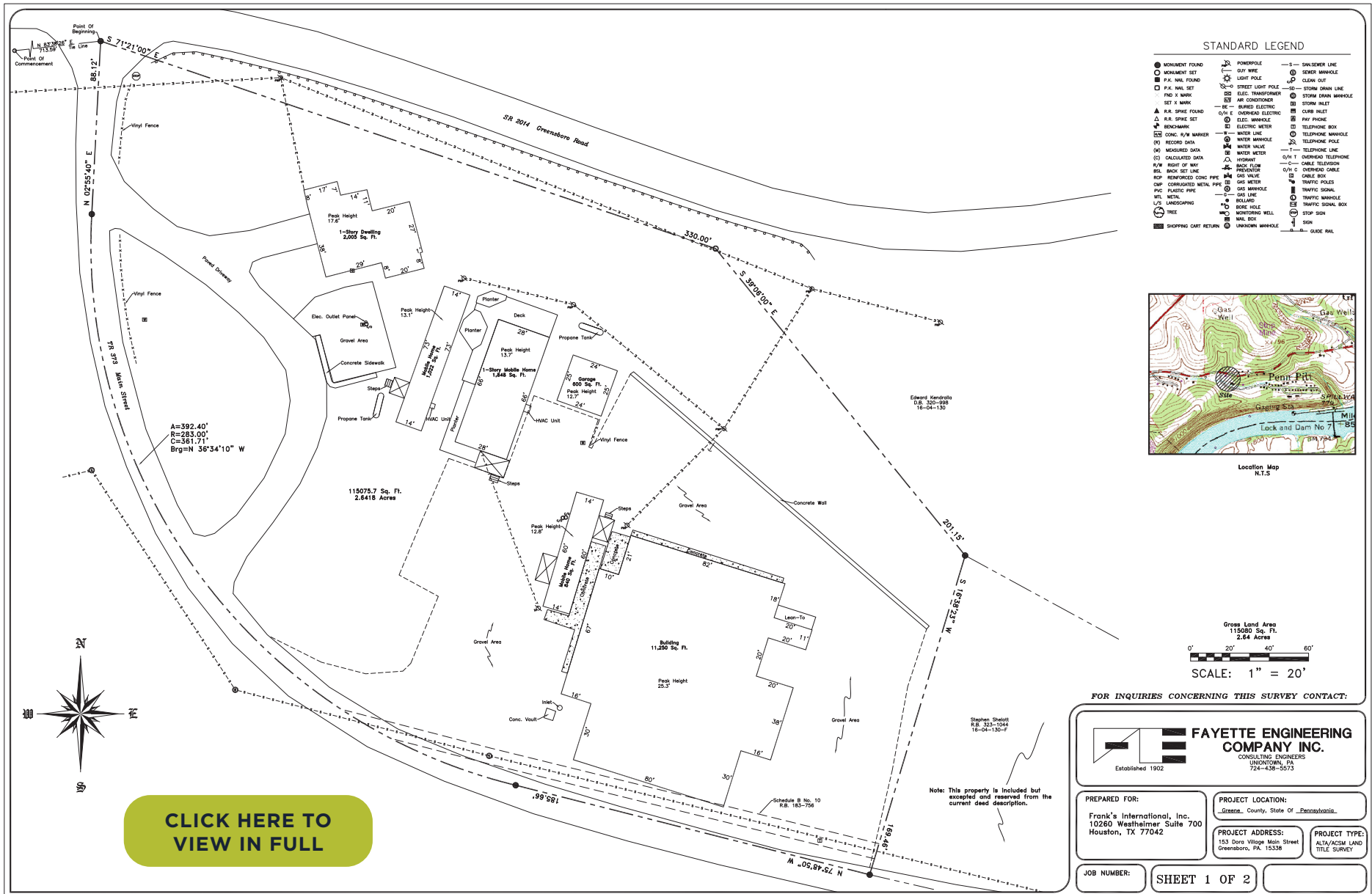
Asking Price: \$225,000



PROPERTY LOCATION



SITE PLAN



CONTACT INFORMATION



JOHN LISOWSKI

+1 412 391 1745 (direct)
+1 412 736 7147 (mobile)
john.lisowski@cushwake.com
LIC# RS223178L

310 Grant Street, Suite 1825
Pittsburgh, PA 15219
+1 412 391 2600
cushmanwakefield.com

©2023 Cushman & Wakefield. All rights reserved. The information contained in this communication is strictly confidential. This information has been obtained from sources believed to be reliable but has not been verified. NO WARRANTY OR REPRESENTATION, EXPRESS OR IMPLIED, IS MADE AS TO THE CONDITION OF THE PROPERTY (OR PROPERTIES) REFERENCED HEREIN OR AS TO THE ACCURACY OR COMPLETENESS OF THE INFORMATION CONTAINED HEREIN, AND SAME IS SUBMITTED SUBJECT TO ERRORS, OMISSIONS, CHANGE OF PRICE, RENTAL OR OTHER CONDITIONS, WITHDRAWAL WITHOUT NOTICE, AND TO ANY SPECIAL LISTING CONDITIONS IMPOSED BY THE PROPERTY OWNER(S). ANY PROJECTIONS, OPINIONS OR ESTIMATES ARE SUBJECT TO UNCERTAINTY AND DO NOT SIGNIFY CURRENT OR FUTURE PROPERTY PERFORMANCE.