



 CUSHMAN &
WAKEFIELD

D C L X X I I I
673

LEXINGTON AVE

*Prime Midtown East
Inline Retail Opportunity*



LEASE TYPE
DIRECT

POSSESSION
IMMEDIATE

HIGHLIGHTS

- ALL NON-VENTED FOOD USE CONSIDERED
- HIGH TRAFFIC CORNER EXPOSURE NEAR THE 59TH & LEXINGTON TRANSPORTATION HUB
- CLOSE PROXIMITY TO THE HUGH FOOD HALL, BLOOMINGDALE'S, AND BOSTON PROPERTIES MIDTOWN CAMPUS

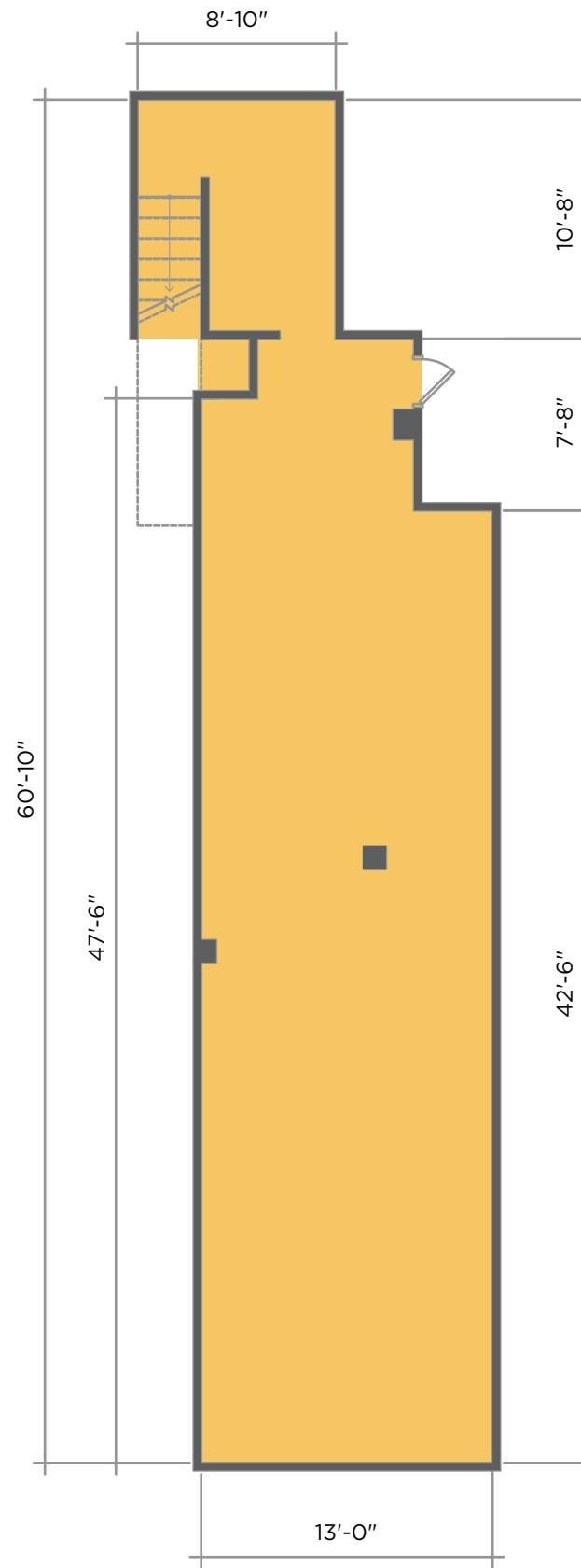
GROUND FLOOR
744 SF

TOTAL AREA
1,494 SF

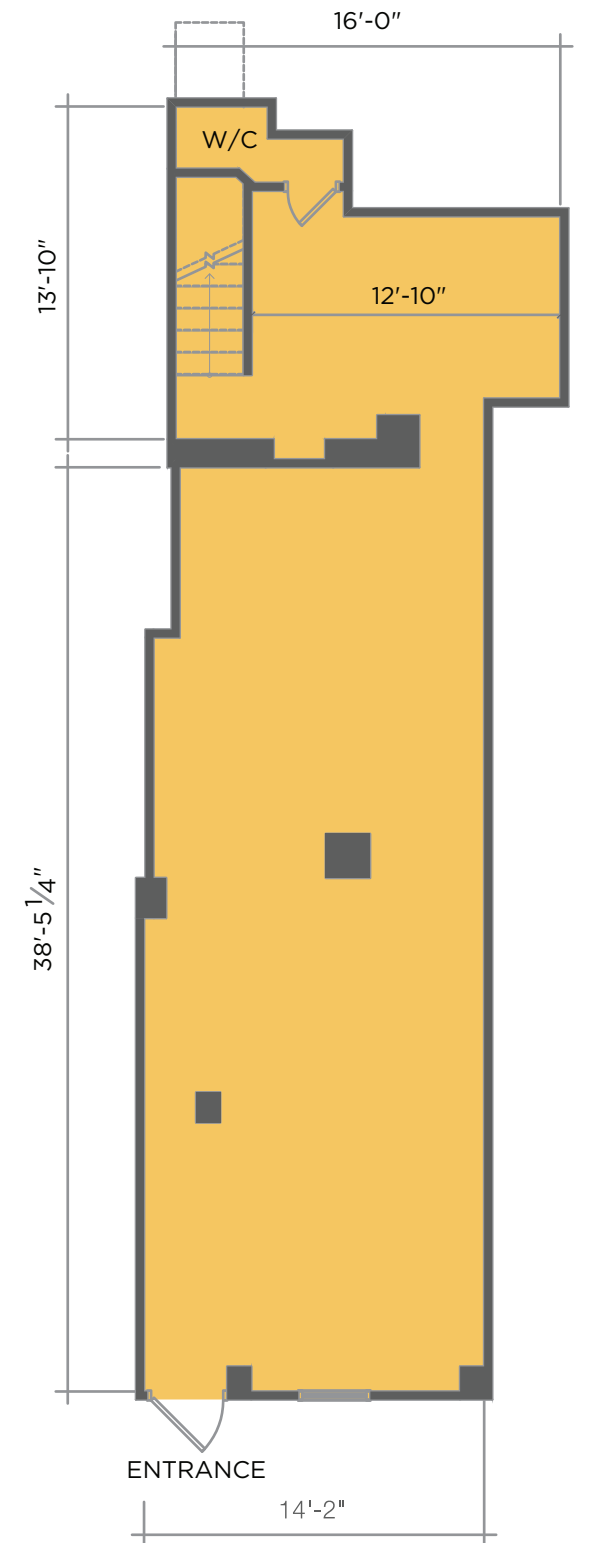
BASEMENT
740 SF

FRONTAGE
14 FT

BASEMENT



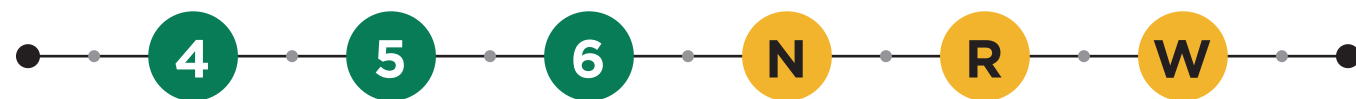
STREET LEVEL





NEIGHBORING RETAILERS

- | | |
|-----------------|-------------|
| JUST SALAD | CHICK-FIL-A |
| BUMBLE & BUMBLE | CVS |
| DUNKIN' DONUTS | DOS TOROS |
| STARBUCKS | AMAZON GO |
| T-MOBILE | |



LEXINGTON AVE & 59TH ST

9 TH BUSIEST SUBWAY STATION	67,684 WEEKDAY RIDERS	21,000,635 ANNUAL RIDERS
---	--------------------------	-----------------------------



EAST 60TH STREET

MARK GARRISON SKIN SPA SEPHORA
PANDORA

EAST 59TH STREET

EAST 58TH STREET

AMERICAN EAGLE OUTFITTERS

Starbucks

HSBC

EAST 57TH STREET

GNC

MATTO ESPRESSO

SUBWAY

MY PIE PIZZERIA

NEW DEVELOPMENT

EAST 56TH STREET

FRIDGES MARKET

JUICY CUBE

BJ NEWS

MARC JACOB JEWELERS

REFLECTION

DANTE'S CELLAR

DE JANEIRO

CAFE OLYMPIA

NEW DEVELOPMENT

EAST 55TH STREET

DUNKIN' DONUTS

CENTRAL SYNAGOGUE

DOS TOROS

EAST 54TH STREET

LEXINGTON AVENUE

4 5 6
N R W

blomingdale's

Läderach
chocolater suisse

Capital One café

Le Cirque

Starbucks

BLOOMBERG BUILDING

Santander

Casper

Chick-fil-A

DIG.

TACO BELL

BankUnited

THE FITZPATRICK HOTEL
NEW DEVELOPMENT

ETHAN ALLEN

drybar

LIFEWORX
673

BB.

AT&T
WORLD CURRENCY EXCHANGE

MAMAN

JUST SALAD

le café coffee

Starbucks

NEUHAUS

OAKBERRY ACAI

EYES ON THE WORLD

BIANCA JEWELERS

CHOP N' GO

GLAZE TERIYAKI

FedEx



Michael Azarian
+1 212 841-7831
Michael.Azarian@cushwake.com

James Ariola
+1 212 698-2572
James.Ariola@cushwake.com

Kassie Wallace
+1 212 841-7943
Kassie.Wallace@cushwake.com

D C L X X I I
673

LEXINGTON AVE

*Prime Midtown East
Inline Retail Opportunity*