



HAYWARD INDUSTRIAL PARK - ±24,000 SF AVAILABLE

23663 Eichler Street, Unit H-I, Building 5
Hayward, CA

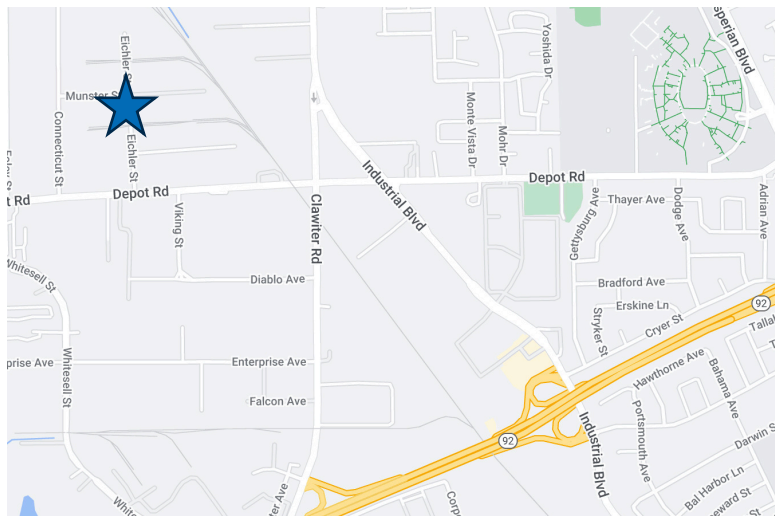
Property Highlights

- ±1,750 SF Office Area
- Six (6) Dock High Doors
- One (1) Drive-In Door
- One (1) Rail Door
- End Unit
- Power - Two subpanels; 200 A 3P 120/208V & 125 A 3P 120/208 V; expandable to 600 A

Asking Rate: \$1.25 psf, per month, NNN

Operating Expenses: \$0.27 psf, per month

Date Available: December 1, 2023



For information, please contact:

JOE FABIAN

Executive Managing Director

t 510-300-0211

Joe.fabian@nmrk.com

JAY HAGGLUND, SIOR

Executive Managing Director

t 510-267-6011

Jay.hagglund@cushwake.com

nmrk.com

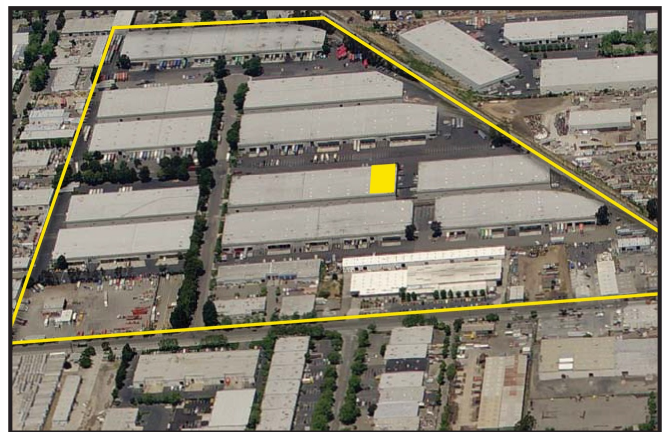
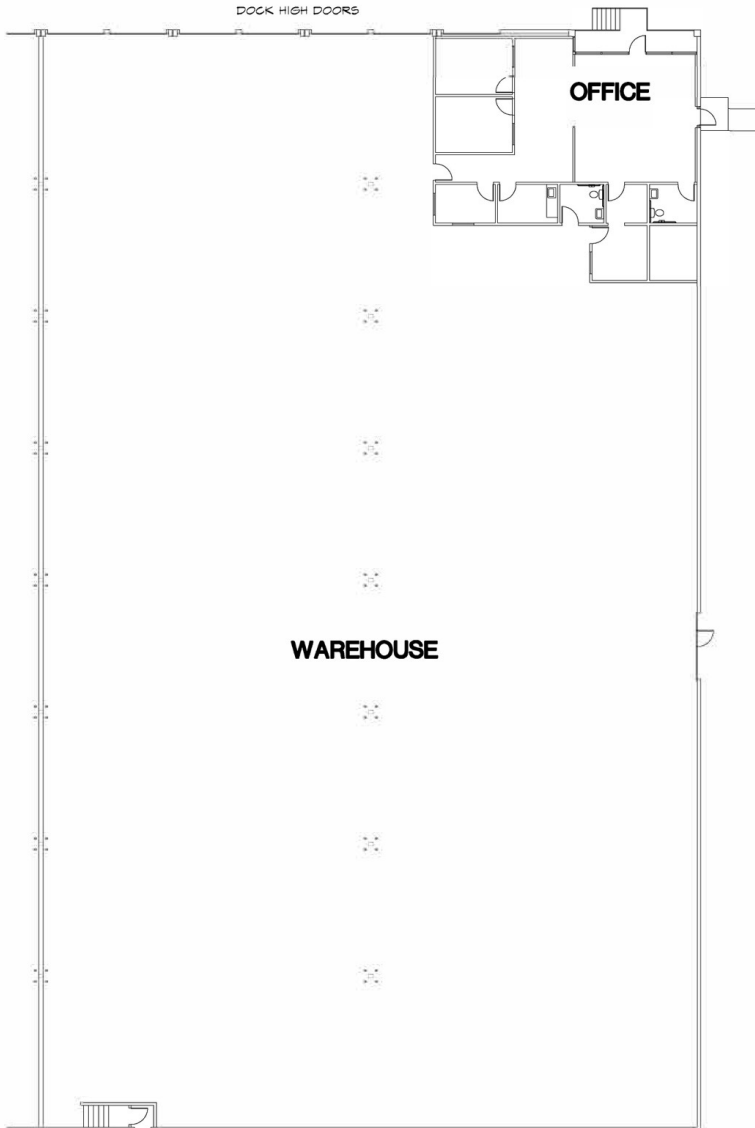
NEWMARK



The distributor of this communication is performing acts for which a real estate license is required. The information contained herein has been obtained from sources deemed reliable but has not been verified and no guarantee, warranty or representation, either express or implied, is made with respect to such information. Terms of sale or lease and availability are subject to change or withdrawal without notice.

HAYWARD INDUSTRIAL PARK

23663 Eichler Street, Unit H-1, Building 5
Hayward, CA



For information, please contact:

JOE FABIAN

Executive Managing Director

t 510-300-0211

Joe.fabian@nmrk.com

JAY HAGGLUND, SIOR

Executive Managing Director

t 510-267-6011

Jay.hagglund@cushwake.com

nmrk.com

NEWMARK



The distributor of this communication is performing acts for which a real estate license is required. The information contained herein has been obtained from sources deemed reliable but has not been verified and no guarantee, warranty or representation, either express or implied, is made with respect to such information. Terms of sale or lease and availability are subject to change or withdrawal without notice.