



11,123 RSF OFFICE
FOR SUBLEASE

HIDDEN VALLEY OFFICE PARK

1750 112th Ave NE
Bellevue, WA 98004

Brian Toy
Director

+1 425 201 1224

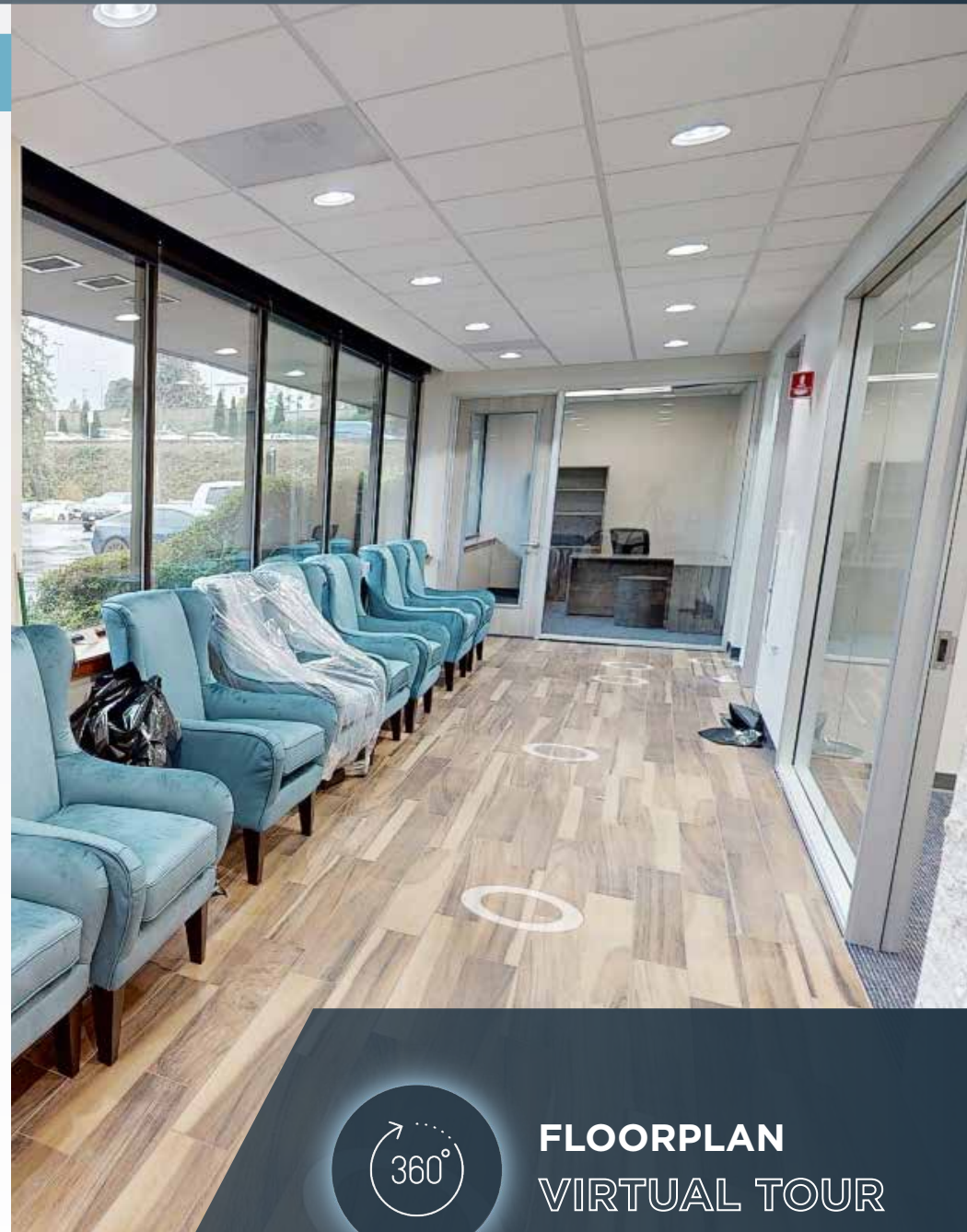
brian.toy@cushwake.com



HIDDEN VALLEY OFFICE PARK

Property Information

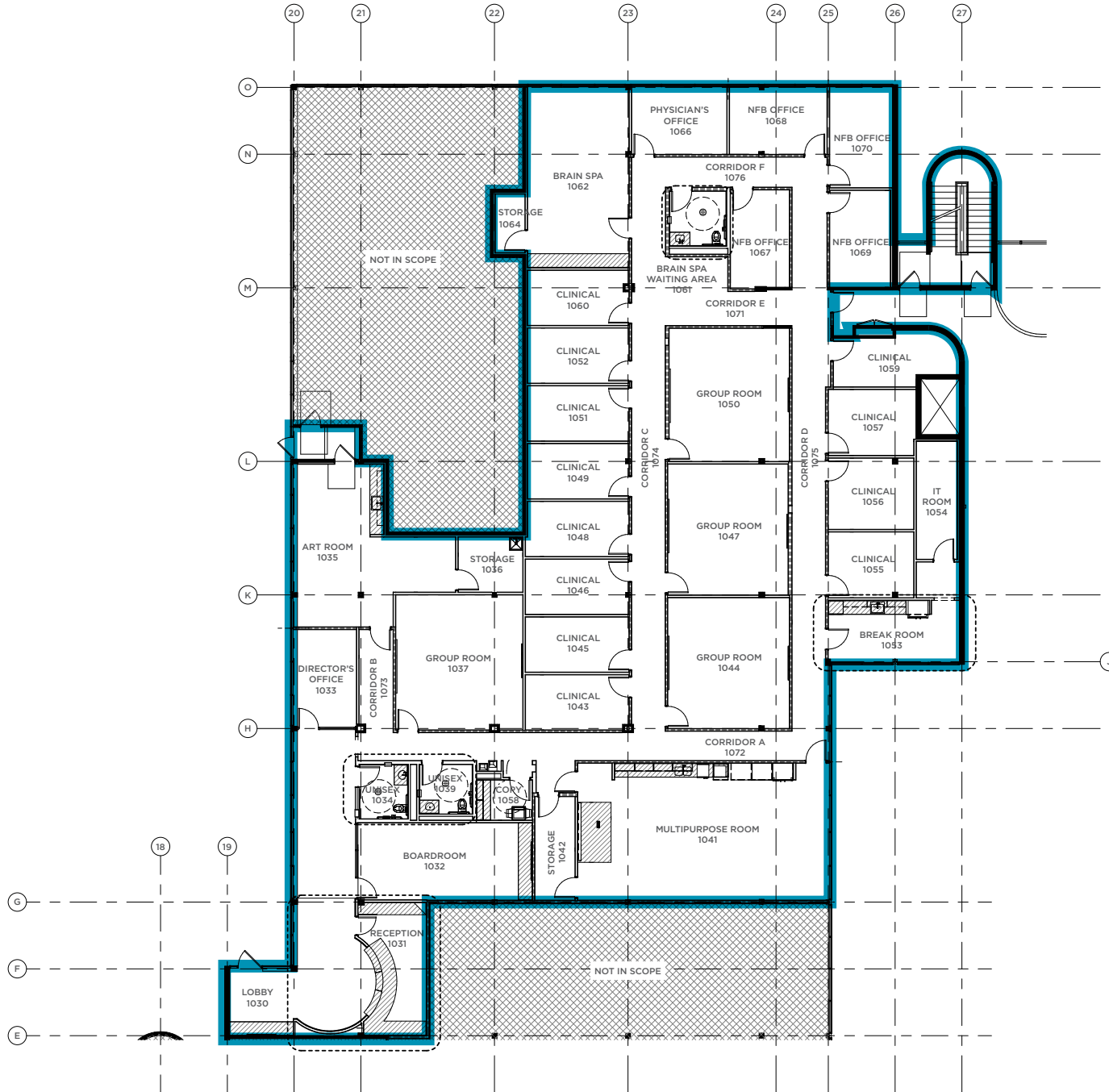
- **Available Space**
1st Floor - 11,123 RSF
- **Suite Number**
C-100
- **Possession**
Available Immediately
- **Rent**
\$20.00/SF NNN (OpEx: \$12.10/SF Est.)
- **Term**
Flexible Term Possible;
Master Lease Expires May 31, 2034
- **Building Features**
 - Amenities include Conference Facility, Tenant Lounge, Fitness Center with Showers, and Full-Service Deli On-Site
 - 4.00/1,000 SF Parking Ratio; Covered Parking Available
 - Just-Completed High-End Buildout
 - Brand New Furniture Included



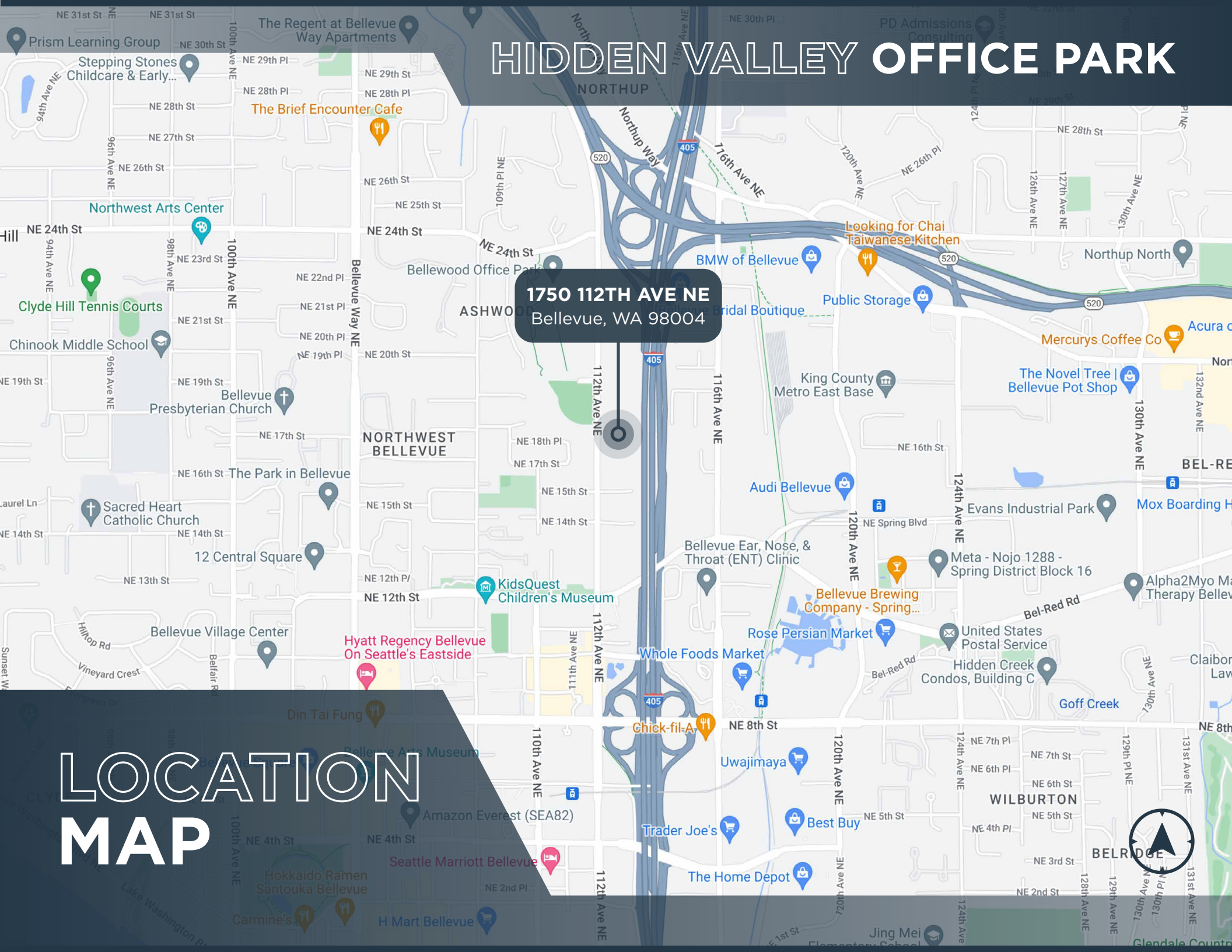
FLOORPLAN
VIRTUAL TOUR

Floor Plan

HIDDEN VALLEY OFFICE PARK



HIDDEN VALLEY OFFICE PARK

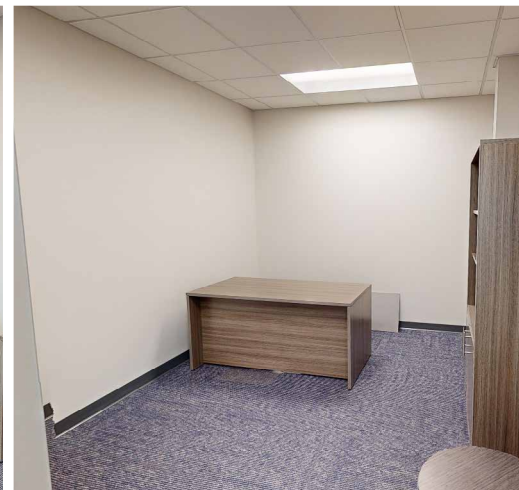


1750 112TH AVE NE
Bellevue, WA 98004

LOCATION MAP

HIDDEN VALLEY OFFICE PARK

Interior Photos





For more information, you may contact:

Brian Toy
Director

+1 425 201 1224

brian.toy@cushwake.com

11235 SE 6th Street, Suite 200
Bellevue, WA 98004

+1 425 455 4500

cushmanwakefield.com

©2024 Cushman & Wakefield. All rights reserved. The information contained in this communication is strictly confidential. This information has been obtained from sources believed to be reliable but has not been verified. NO WARRANTY OR REPRESENTATION, EXPRESS OR IMPLIED, IS MADE AS TO THE CONDITION OF THE PROPERTY (OR PROPERTIES) REFERENCED HEREIN OR AS TO THE ACCURACY OR COMPLETENESS OF THE INFORMATION CONTAINED HEREIN, AND SAME IS SUBMITTED SUBJECT TO ERRORS, OMISSIONS, CHANGE OF PRICE, RENTAL OR OTHER CONDITIONS, WITHDRAWAL WITHOUT NOTICE, AND TO ANY SPECIAL LISTING CONDITIONS IMPOSED BY THE PROPERTY OWNER(S). ANY PROJECTIONS, OPINIONS OR ESTIMATES ARE SUBJECT TO UNCERTAINTY AND DO NOT SIGNIFY CURRENT OR FUTURE PROPERTY PERFORMANCE.

