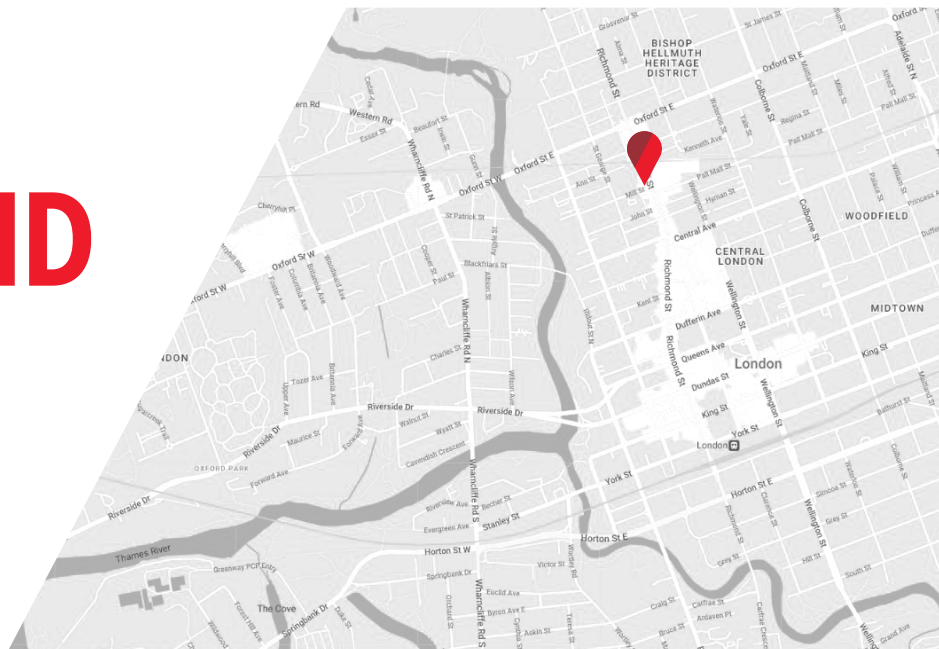




PRIME DOWNTOWN PROFESSIONAL OFFICE SPACES | FOR LEASE

685 RICHMOND STREET

London, ON N6A 5M1



ABOUT THE PROPERTY

High profile downtown office space available for lease in the heart of Richmond Row

UNIT	AVAILABLE SPACE	ASKING RENT	ADDITIONAL RENT
2 nd Floor	Approx. 11,434 SF	\$12.50 PSF Net	\$11.02 PSF*
3 rd Floor	Approx. 11,063 SF	\$12.50 PSF Net	\$11.02 PSF*
4 th Floor	Approx. 9,315 SF	\$13.50 PSF Net	\$11.02 PSF*

*Inclusive of building insurance, common area maintenance and property taxes

- **Zoning:** OR & BDC(1)
- **Signage:** Opportunity for signage on the North South, East, and West facades
- **Parking:** Underground parking available and additional surface parking nearby
- Situated at the corner of Richmond Street and Mill Street on busy Richmond Row
- Bright space with an abundance of natural light
- Modern office building in an outstanding location
- Centrally located near several financial institutions and retail shops, restaurants and other downtown amenities
- Public transit nearby
- Professionally managed and maintained building
- Move-in ready, professional, nicely finished office space
- Extensive individualized electronic building security
- Leasing incentives available



TYLER DESJARDINE
Sales Representative
 519 438 5403
 tyler.desjardine@cushwakeswo.com

CUSHMAN & WAKEFIELD
 SOUTHWESTERN ONTARIO
 850 Medway Park Dr, Suite 201
 London, Ontario N6G 5C6
 www.cushwakeswo.com

CUSHMAN & WAKEFIELD
 Southwestern Ontario

FLOOR PLANS | 2ND FLOOR



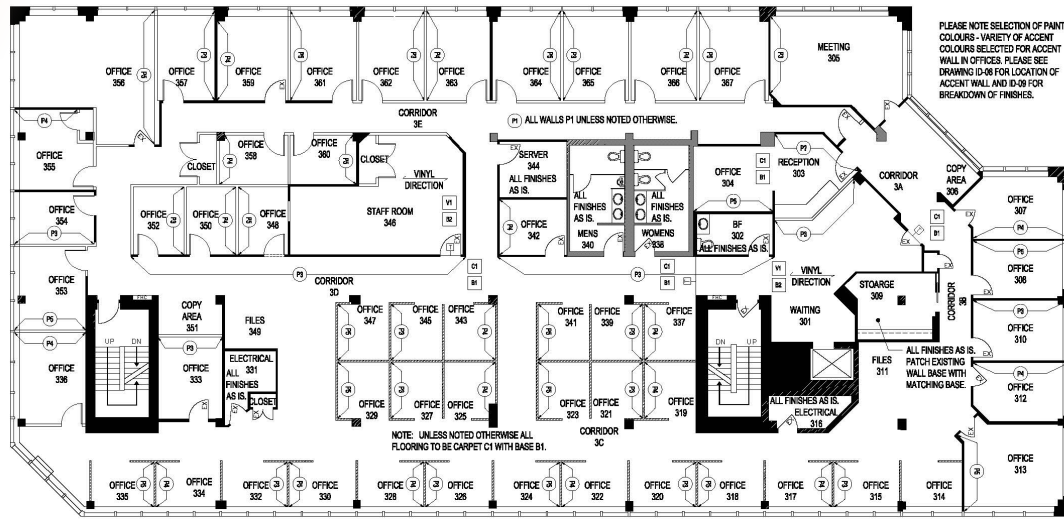
TYLER DESJARDINE
Sales Representative
519 438 5403
tyler.desjardine@cushwakeswo.com

CUSHMAN & WAKEFIELD
SOUTHWESTERN ONTARIO
850 Medway Park Dr, Suite 201
London, Ontario N6G 5C6
www.cushwakeswo.com

**CUSHMAN & WAKEFIELD**
Southwestern Ontario

FLOOR PLANS

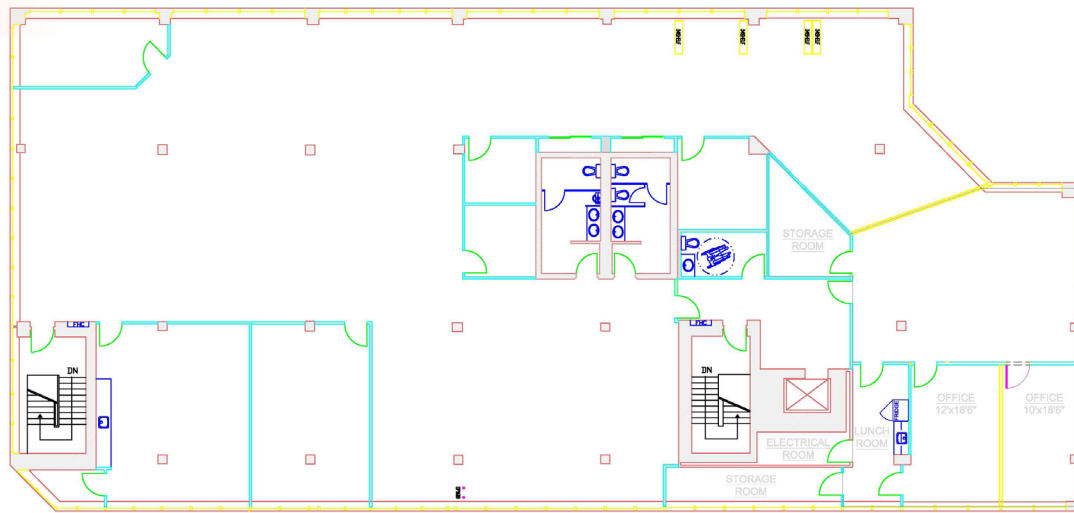
3RD FLOOR



PLAN FINISHES
SCALE: 3/32" = 1'-0"

PREPARED BY: Design Matrix Inc. 2424 Main Street London, ON, Canada N6G 1S2 T: 519 682 3549 F: 519 675 5886 info@designmatrix.com PROFESSIONAL FLOORING DESIGNER	DRAWING TITLE: MAY MCCONVILLE FINISH PLAN REV.2/ 04.23.14	LOCATION: THIRD FLOOR 685 RICHMOND ST. LONDON, ONTARIO	PREPARED FOR: FARHI HOLDINGS CORPORATION
			DATE: APRIL 16, 2015
			FILE: MAY-MCCONVILLE
			SCALE: 3/32" = 1'-0"
			DRAWING NUMBER: ID-08

4TH FLOOR



NOTES: *FOR PRELIMINARY USE ONLY. NOT TO BE USED FOR CONSTRUCTION OR FURNITURE INSTALLATION PURPOSES. *FURNITURE IS NOT INCLUDED (FOR ILLUSTRATION PURPOSES ONLY).	LOCATION: FOURTH FLOOR 685 RICHMOND ST. LONDON, ONTARIO	PREPARED FOR: FARHI HOLDINGS
		DATE: MARCH 2015
		FILE: MAY-MCCONVILLE
		SCALE: 3/32" = 1'-0"

TYLER DESJARDINE
 Sales Representative
 519 438 5403
 tyler.desjardine@cushwakeswo.com

CUSHMAN & WAKEFIELD
 SOUTHWESTERN ONTARIO
 850 Medway Park Dr, Suite 201
 London, Ontario N6G 5C6
 www.cushwakeswo.com

CUSHMAN & WAKEFIELD
 Southwestern Ontario

PERMITTED USES

Permitted Uses Business District Commercial (BDC (1)) Zone	
Animal hospitals	Studios
Apartment buildings, with any or all of the other permitted uses on the first floor;(Z.-1-94236)	(Theatres and cinemas deleted by Z.-1-96458 - O.M.B. File No. R 980047 - Order Issue Date: June 25, 1998)
Bake shops	Video rental establishments
Clinics	Lodging house class 2.(Z.-1-93172)
Commercial recreation establishments	Cinemas ;(Z.-1-96458 - O.M.B. File No. R 980047 - Order Issue Date: June 25, 1998)
Commercial parking structures and/or lots	Brewing on Premises Establishment.(Z.-1-021027)
Converted dwellings	Food Store; (Z-1-051390)
Day care centres	Animal Clinic; (Z-1-051390)
Dry cleaning and laundry depots	Convenience Store; (Z-1-051390)
Duplicating shops	Post Office; (Z-1-051390)
Emergency care establishments	Convenience service establishments; (Z-1-051390)
Existing dwellings	Dwelling units restricted to the rear portion of the ground floor or on the second floor or above with any or all of the other permitted uses in the front portion of the ground floor; (Z-1-051390)
Financial institutions	Bed and breakfast establishments; (Z-1-051390)
Grocery stores	Antique store; (Z-1-051390)
Laboratories	Police stations; (Z-1-051390)
Laundromats	Artisan Workshop (Z.-1-172561)
Libraries	Craft Brewery (Z.-1-172561)
Medical/dental offices	Assembly halls
Offices	Places of Worship
Personal service establishments	Community centres
Private clubs	Funeral homes
Restaurants,((Z.-1-96439); (Z.-1-081795)	Institutions
Retail stores	Schools
Service and repair establishments	Fire halls. (Z-1-051390)

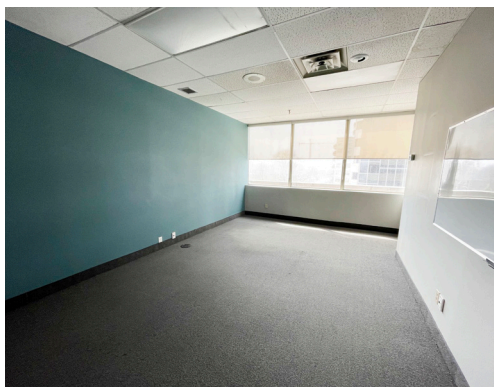
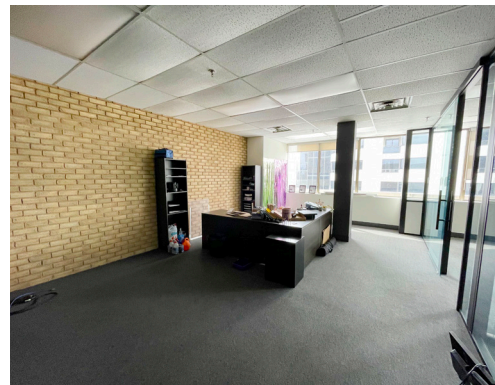
Permitted Uses Office Residential (OR) Zone	
Office-apartment buildings	Offices;(Z.-1-01908)
Group Home Type 2	Medical/dental offices.(Z.-1-01908)
Lodging House Class 2; (Z.-1-93172)	

TYLER DESJARDINE
Sales Representative
 519 438 5403
 tyler.desjardine@cushwakeswo.com

CUSHMAN & WAKEFIELD
SOUTHWESTERN ONTARIO
 850 Medway Park Dr, Suite 201
 London, Ontario N6G 5C6
 www.cushwakeswo.com



PROPERTY IMAGES | 2ND FLOOR



TYLER DESJARDINE
Sales Representative
519 438 5403
tyler.desjardine@cushwakeswo.com

CUSHMAN & WAKEFIELD
SOUTHWESTERN ONTARIO
850 Medway Park Dr, Suite 201
London, Ontario N6G 5C6
www.cushwakeswo.com

 **CUSHMAN & WAKEFIELD**
Southwestern Ontario

©2025 Cushman & Wakefield Southwestern Ontario, Real Estate Brokerage, Independently Owned and Operated. A Member of the Cushman & Wakefield Alliance. This information has been obtained from sources believed to be reliable but has not been verified. No warranty or representation, express or implied, is made as to the condition of the property (or properties) referenced herein or as to the accuracy or completeness of the information contained herein, and same is submitted subject to errors, omissions, change of price, rental or other conditions, withdrawal without notice, and to any special listing conditions imposed by the property owner(s). Any projections, opinions or estimates are subject to uncertainty and do not signify current or future property performance. All rights reserved.