



**CUSHMAN &
WAKEFIELD**

FOR SUBLEASE

121 RICHMOND STREET WEST

Suite 1300: 5,548 SF

SPACE HIGHLIGHTS

- Fully turnkey penthouse
- 6 offices, 14-16 person boardroom, 6 person meeting room, built-out reception area and open seating for 36+
- Walk-up to a Private gym and expansive kitchen, an end of trip facilitates
- Plenty of natural light

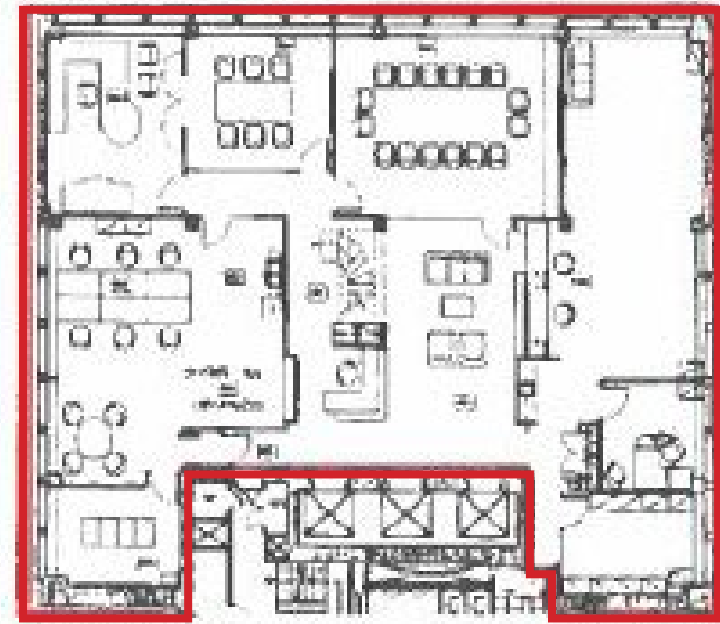
DETAILS

AVAILABILITY: Suite 1300 - 5,548 SF
ASKING RENT: Negotiable
COMMENTS: Furniture is Negotiable

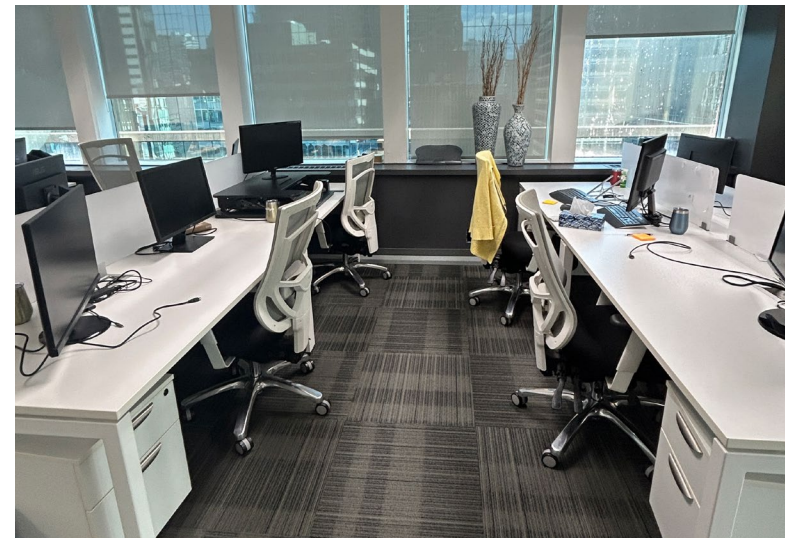
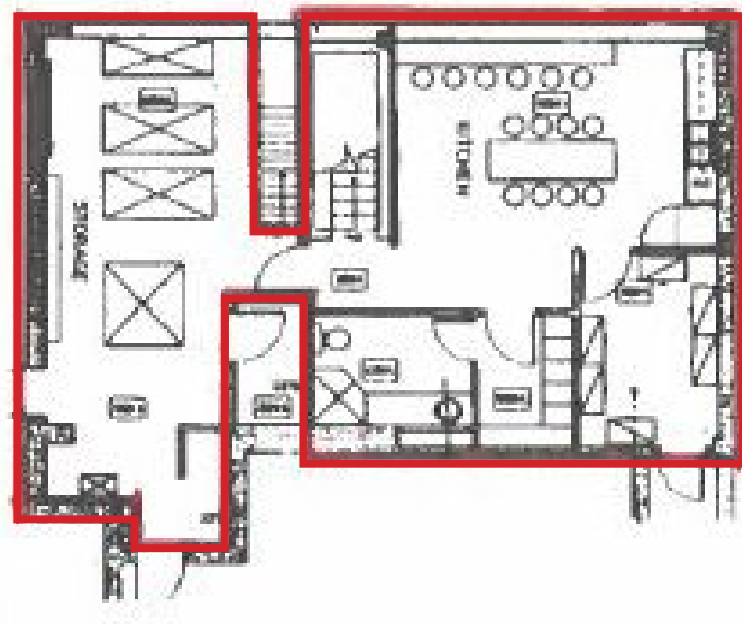


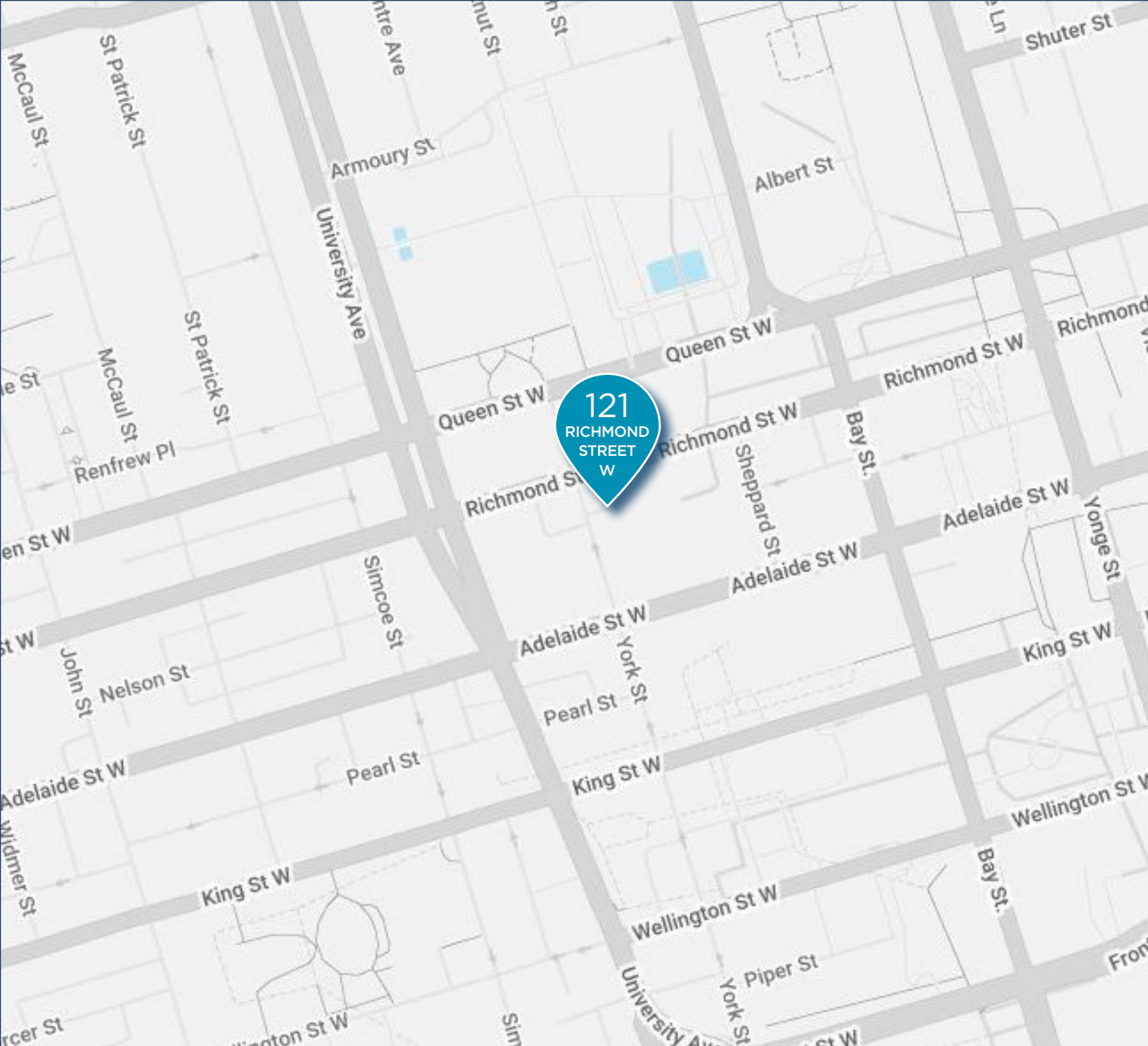
FLOOR PLANS

Lower Level



Upper Level





CONTACT

Riley Littlejohn

Senior Associate
Office Leasing and Tenant Advisory
D: +1 416 359 2444
riley.littlejohn@cushwake.com

Michael Borron

Associate Vice President
Leasing Tenant Representation
D: +1 416 359 2481
michael.borron@cushwake.com

Cushman & Wakefield ULC., Brokerage

161 Bay Street, Suite 1500
Toronto, ON M5J 2S1
cushmanwakefield.com

©2024 Cushman & Wakefield. All rights reserved. The information contained in this communication is strictly confidential. This information has been obtained from sources believed to be reliable but has not been verified. NO WARRANTY OR REPRESENTATION, EXPRESS OR IMPLIED, IS MADE AS TO THE CONDITION OF THE PROPERTY (OR PROPERTIES) REFERENCED HEREIN OR AS TO THE ACCURACY OR COMPLETENESS OF THE INFORMATION CONTAINED HEREIN, AND SAME IS SUBMITTED SUBJECT TO ERRORS, OMISSIONS, CHANGE OF PRICE, RENTAL OR OTHER CONDITIONS, WITHDRAWAL WITHOUT NOTICE, AND TO ANY SPECIAL LISTING CONDITIONS IMPOSED BY THE PROPERTY OWNER(S). ANY PROJECTIONS, OPINIONS OR ESTIMATES ARE SUBJECT TO UNCERTAINTY AND DO NOT SIGNIFY CURRENT OR FUTURE PROPERTY PERFORMANCE.

